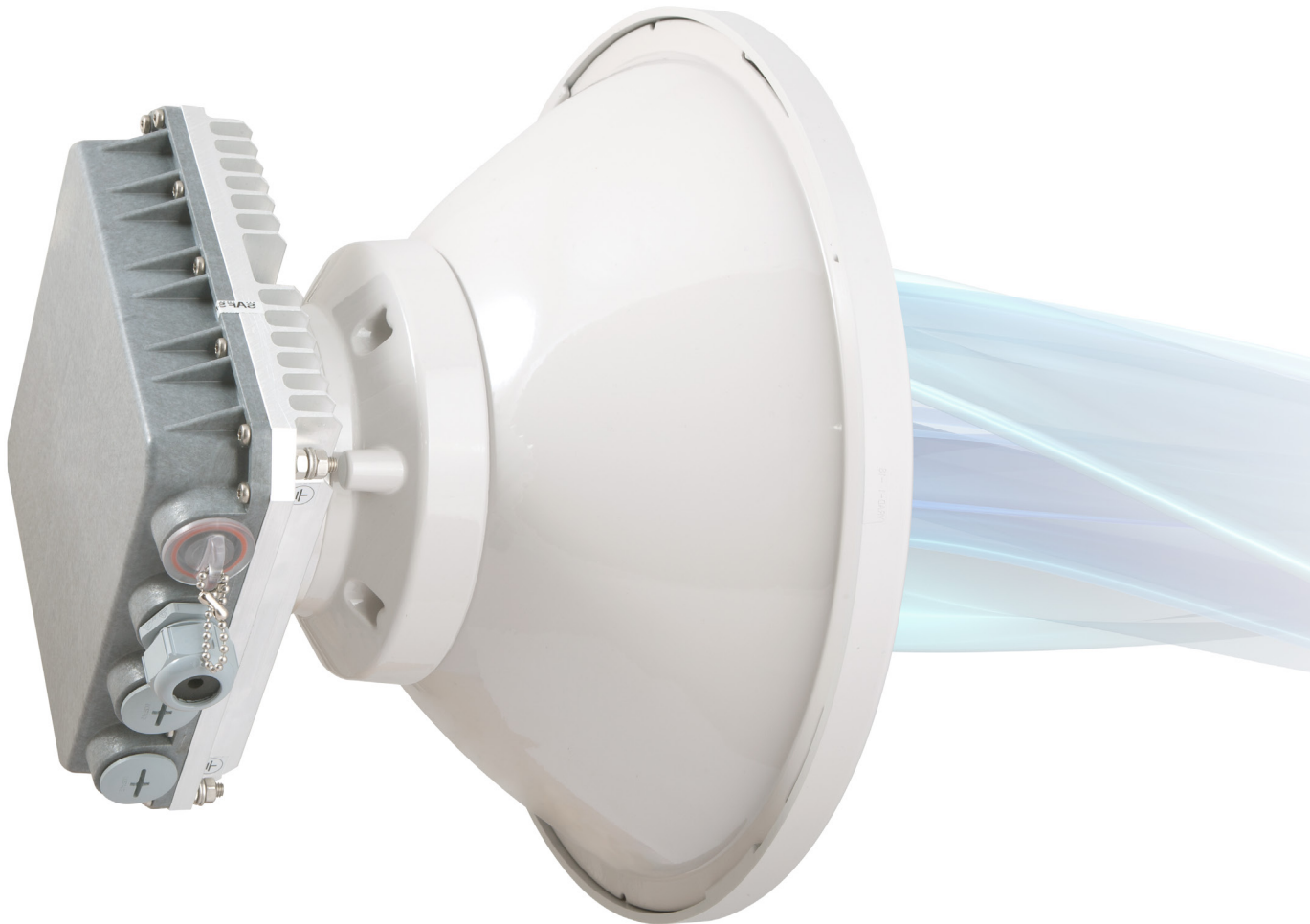


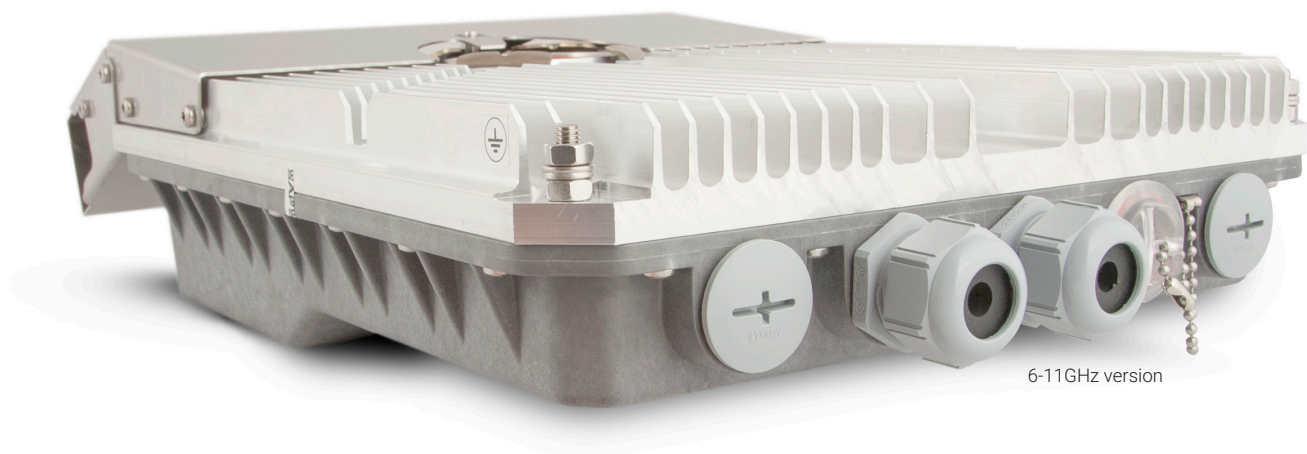


Integra-WS

carrier-grade microwave radio,
delivering up to 883 Mbps



- Integra-WS is specifically designed for use with wide channel bandwidths up to 112MHz and supports up to 1024QAM modulation for network upgrades.
- Full outdoor unit includes radio, modem, Ethernet network processor, and PoE splitter with surge arrestor.
- SFP ports for easy installation – choose single-mode or multi-mode fibre by changing SFP's, add fibre optic cabling later.
- High performance predistortion algorithm enables high Tx power performance.



Integra-WS is an unbelievably light, energy efficient carrier-grade system that exemplifies an outstanding return on smart engineering - the synergy of high competence in radio electronics and materials science. Slip-fit design allows integration with existing high performance antenna systems. Gigabit Power over Ethernet (PoE) port defines simple installation, while SFP slot enable fibre optic installation – giving the user ultimate flexibility in cable design.

| | |
|--------------------------------|---|
| Capacity | 883 Mbps at 112MHz 1024QAM 643 Mbps at 80MHz 1024QAM |
| Frequency bands | 6GHz, 11GHz, 15GHz, 17GHz, 18GHz, 23GHz, 24GHz, 26GHz, 28GHz, 38GHz, 42GHz and more* |
| Modulation | 4QAM / 16QAM / 32QAM / 64QAM / 128QAM / 256QAM / 512QAM / 1024QAM with Hitless ACM |
| Configurations | 1+0 |
| Channel bandwidth | |
| ETSI | from 56MHz up to 112MHz |
| FCC | from 40MHz up to 80MHz |
| Gigabit Ethernet | |
| | 1x RJ-45 - Management |
| | 1x RJ-45 or 1x SFP - Traffic |
| Service ports | |
| 3.5mm | Audible alignment and RSSI |
| USB B-Type | Terminal Access |
| LED | Power On, Link Synchronization, RSL |
| Ethernet type | Out-of-band multiplexer |
| Management | Out-of-band, SNMP v1/2c/3, SSH, Telnet, HTTPS, Serial, RADIUS, Network Time Protocol |
| Carrier Ethernet functionality | Transparent |
| Performance monitoring | Performance graphs, constellation diagram, alarms, detailed counters |
| Antenna type | External, Slip-fit |
| Form factor | 235 x 250 x 72 mm / 9.26" x 9.85" x 2.84", 2.9 kg / 6.4 lbs (15-42GHz) 280 x 437 x 100 mm / 11.02" x 17.2" x 3.9", 6.5 kg / 14.3 lbs (6-11GHz) |
| Temperature range | -33 ... +55 °C / -28 ... +130 °F |

* Please contact SAF Tehnika representative for more information



For more detailed information about SAF Tehnika products visit our website www.saftehnika.com or contact your SAF Tehnika representative. Product features may vary between different models, configuration and all data are subject to change without prior notice.