

Eupen Cable USA Hybrid Fiber Solutions

Cambium Ordering Guide 2021

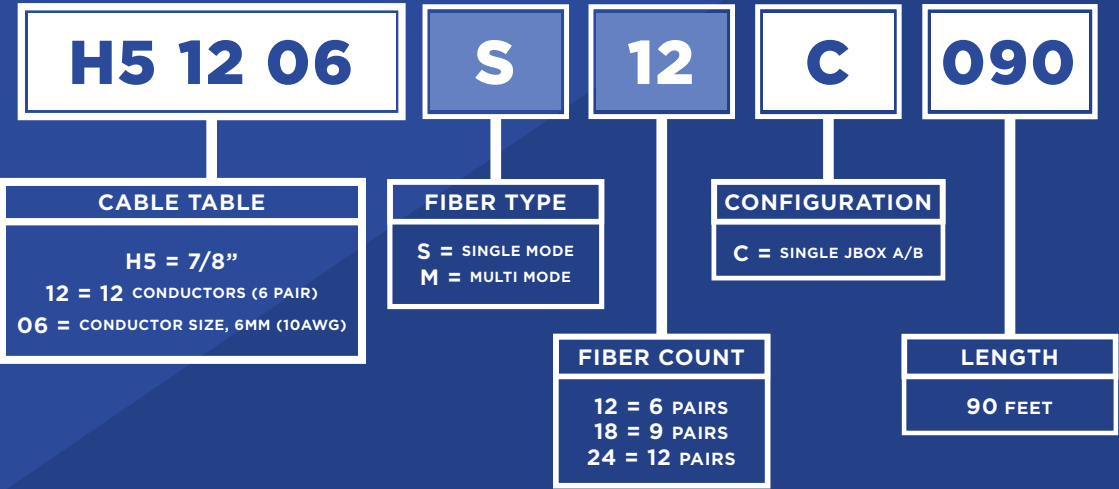


7/8” Hybrid Solutions

7/8” Hybrid cable with fiber optic cable and 48V energy feeders in a corrugated aluminum shielding with UV resistant PE jacket. Multi mode and single mode fiber available.



PART NUMBER GENERATOR



Rack Mount Items

Part Number	Description
RBMD6777BDU48	3 RU rack-mounted DC surge suppression system for use in Remote Radio Head (RRH) and multi-circuit, distributed antenna systems (breakers not included)
RTF4501	Fiber management and storage for up to 40ft of excess fiber, Removable lid with cable entry from the back. Indoor fiber patching solution for up to 12 pairs of fiber, 2U design fits in either 19" or 23" rack.
RTF4575	Fiber management and storage for up to 40ft of excess fiber, Pull out drawer with cable entry from the back. Indoor fiber patching solution for up to 12 pairs of fiber, 2U design fits in either 19" or 23" rack.



RBMD6777BDU48

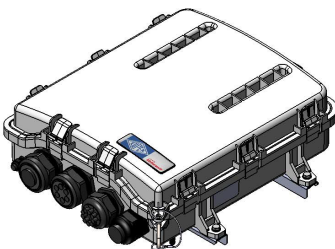


RTF-4575



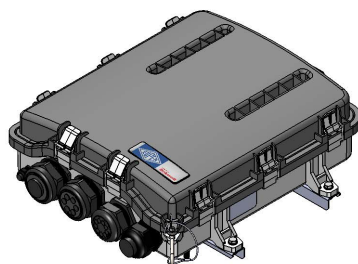
RTF-4501

Junction Box Options



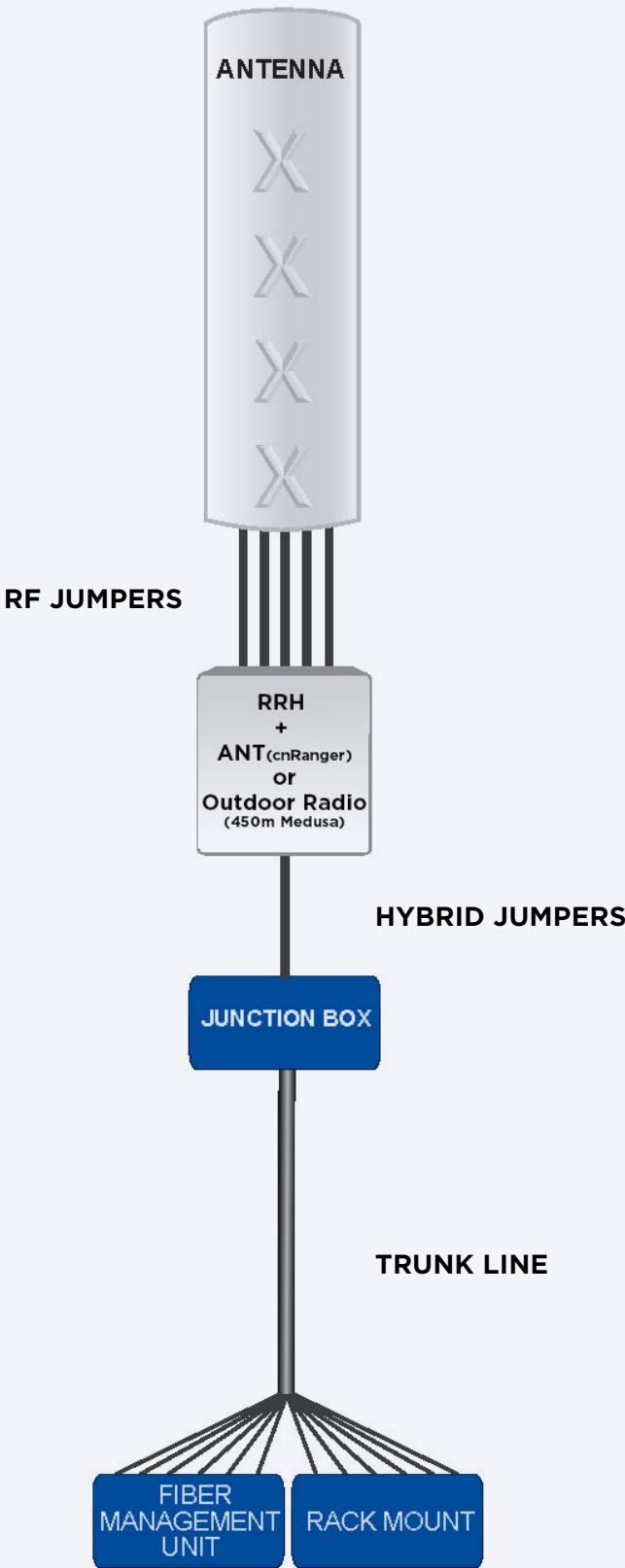
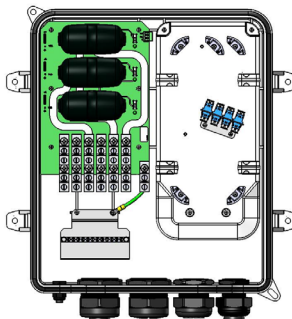
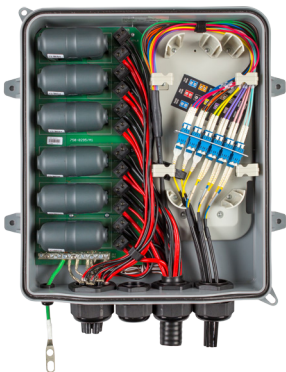
RCKDC6140PF48

Fiber and power distribution for up to 6 RRH with 6 Strikesorb surge/lightning protection module-sets [6 discreet circuits]; I/O 2 hybrid trunks: 6 power jumpers, 9 fiber jumpers; incl. pole/wall mount kit and cable glands.



REKDC9234PF48

Fiber and power distribution for 3-6 RRH with 3 Strikesorb surge/lightning protection module-sets [3 discreet circuits]; I/O 2 hybrid trunks: 6 power jumpers, 9 fiber jumpers; incl. pole/wall mount kit and cable glands.

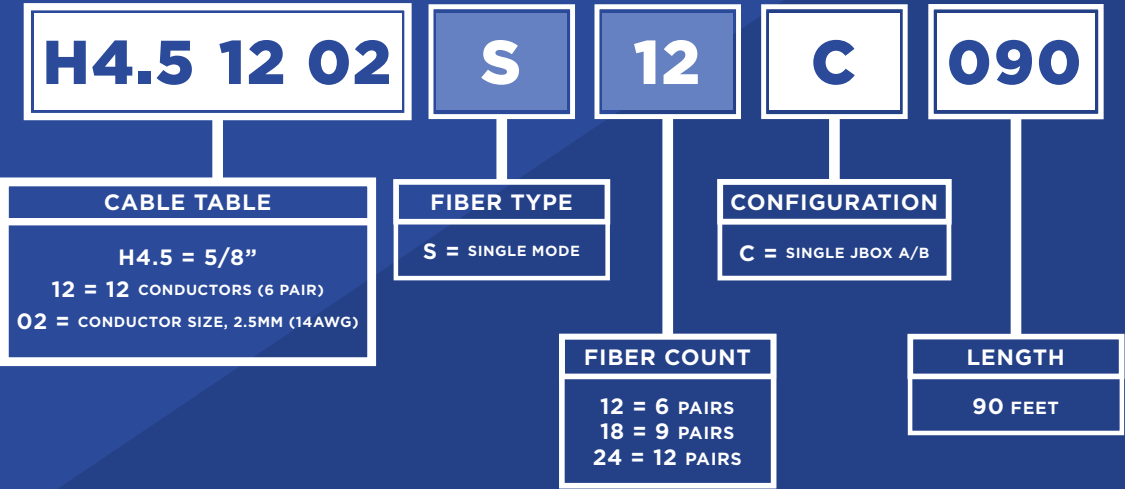


5/8” Hybrid Solutions

5/8” Hybrid fiber optic cable with copper feed lines in a corrugated aluminum shielding with UV resistant PE Jacket.



PART NUMBER GENERATOR



Rack Mount Items

Part Number	Description
RBMD6777BDU48	3 RU rack-mounted DC surge suppression system for use in Remote Radio Head (RRH) and multi-circuit, distributed antenna systems (breakers not included)
RTF4501	Fiber management and storage for up to 40ft of excess fiber, Removable lid with cable entry from the back. Indoor fiber patching solution for up to 12 pairs of fiber, 2U design fits in either 19" or 23" rack.
RTF4575	Fiber management and storage for up to 40ft of excess fiber, Pull out drawer with cable entry from the back. Indoor fiber patching solution for up to 12 pairs of fiber, 2U design fits in either 19" or 23" rack.



RBMD6777BDU48

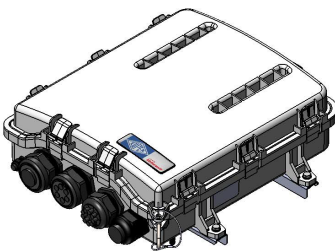


RTF-4575



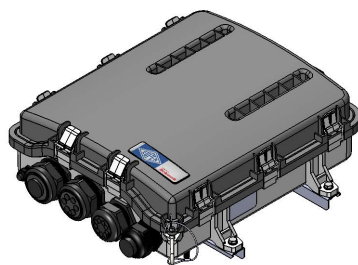
RTF-4501

Junction Box Options



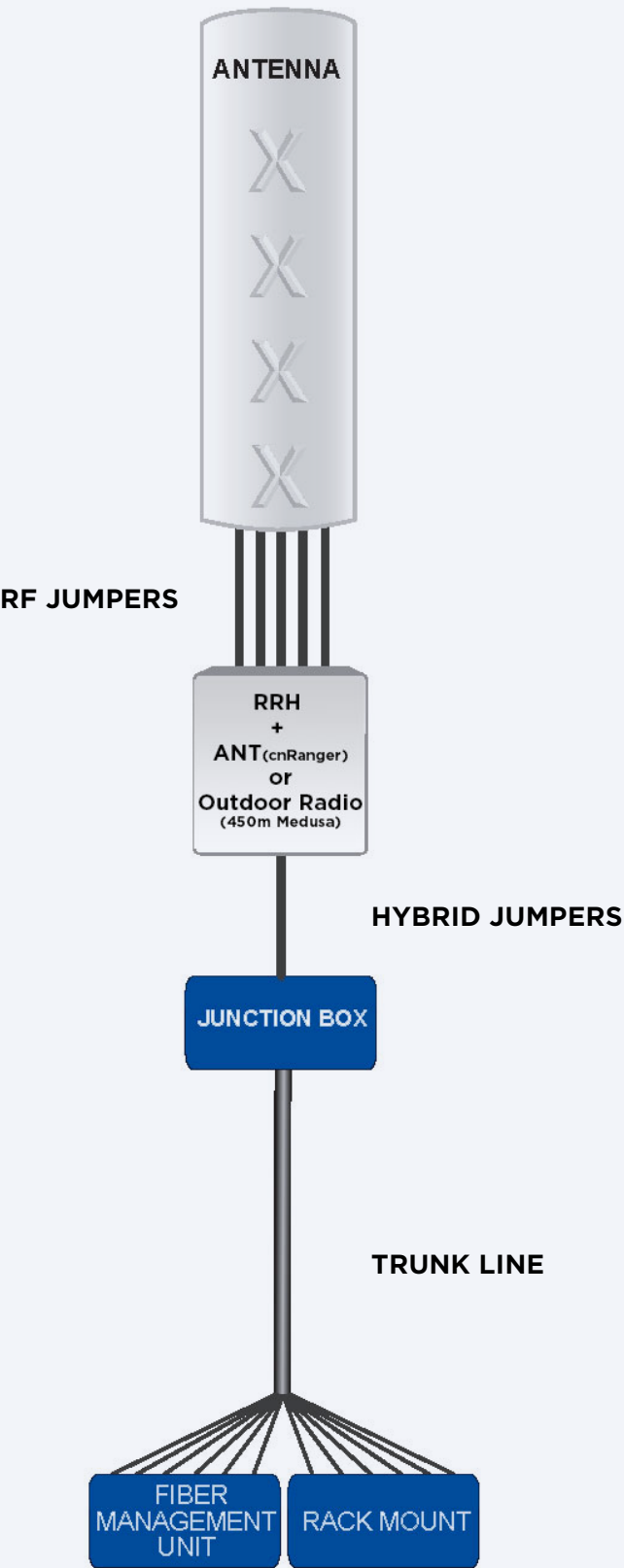
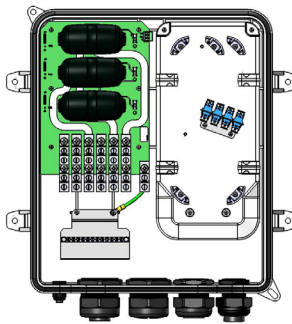
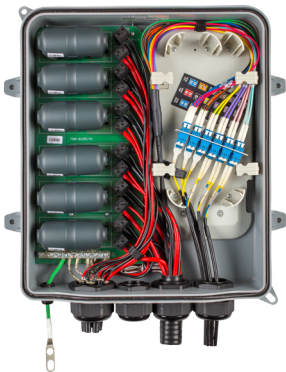
JB6E9F6PY

Junction Box with (6) OVPs and (6) discrete circuits for (1) 1-1/4" or (2) 7/8" or (1) 5/8" hybrid feeder cables, (6) 11 mm power cables and (9) 6 mm fiber jumpers



JB3E9F6PY

Junction Box with (3) OVPs and (3) discrete circuits for (1) 1-1/4" or (1) 5/8" or 7/8" hybrid feeder cables

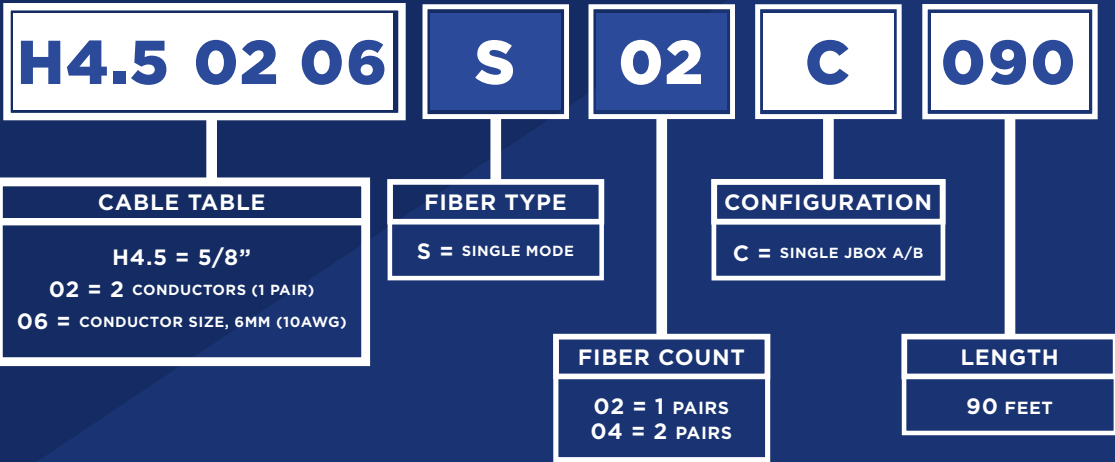


5/8” 1x2 Hybrid Solutions

5/8” Hybrid fiber optic cable with 48V energy feeder in a corrugated aluminum shielding with UV resistant PE jacket. Single mode fiber available.



PART NUMBER GENERATOR



Rack Mount Items

Part Number	Description
RBMD6777BDU48	3 RU rack-mounted DC surge suppression system for use in Remote Radio Head (RRH) and multi-circuit, distributed antenna systems (breakers not included)
RTF4501	Fiber management and storage for up to 40ft of excess fiber, Removable lid with cable entry from the back. Indoor fiber patching solution for up to 12 pairs of fiber, 2U design fits in either 19" or 23" rack.
RTF4575	Fiber management and storage for up to 40ft of excess fiber, Pull out drawer with cable entry from the back. Indoor fiber patching solution for up to 12 pairs of fiber, 2U design fits in either 19" or 23" rack.



RBMD6777BDU48



RTF-4575



RTF-4501

Junction Box Option

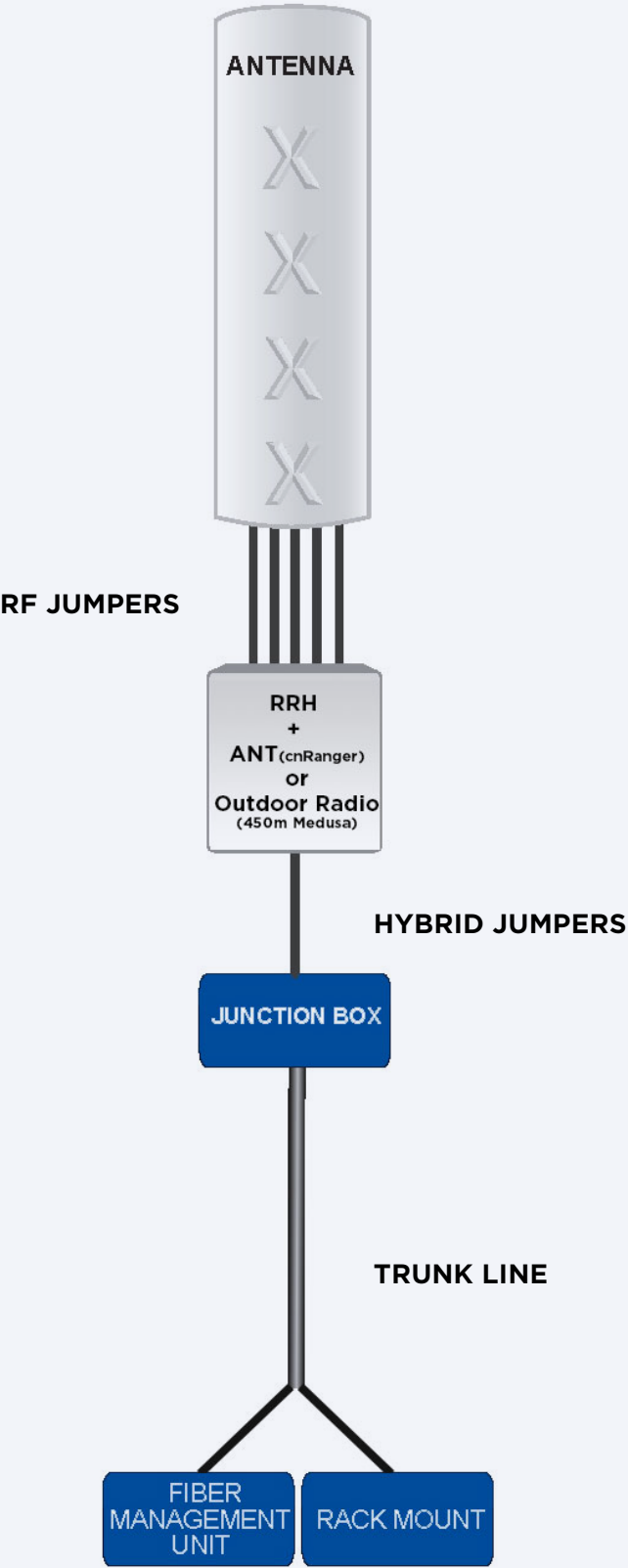
The SC2DC-8692-2-P-48-F surge protector is designed to provide robust over voltage surge protection for the DC power circuits for today's third and fourth generation distributed architecture radio systems. It employs patented Strikesorb® 30-VI-HV modules capable of withstanding direct lightning currents of up to 5 kA (10/350 μs) and induced surge currents of up to 60 kA (8/20 μs). The SC2DC-8692-2-P-48-F provides normal (-48 V to return) and common mode (return to ground) protection for one 48 VDC circuit protecting a single remote radio along with fiber coupling for (3) LC-LC fiber couplers.



SC2DC86922P48F

Features

- Provides protection for one -48 VDC circuit
- Surge protection of 60 kA (8/20 μs)
- Maximum impulse current 5 kA (10/350 μs)
- UL 1449 4th Edition Type 4 protection device
- IEC 61643-11 Class I protection for DC applications
- NEMA 4x rated enclosure
- Suppressor status alarm features
- Supports fiber pass through for 4-pair jumper
- Fiber cable management
- (3) LC-LC fiber couplers



Standard Accessories

Part Number	Description
GK-C58T	Ground Kit, Clip on, Tinned for 5/8" corrugated coax
GK-C78T	Ground Kit, Clip on, Tinned, for 7/8" corrugated coax
HG-58	Hoisting Grip, Lace-up, 5/8" corrugated coax
HG-78	Hoisting Grip, Lace-up, 7/8" corrugated coax
SH-U58	Snap Hanger, Universal, for 5/8" corrugated coax, kit of 10
SH-S78	Snap Hanger, Stackable, for 7/8" corrugated coax, kit of 10
VT-50	Cable ties, Velcro 3/4" x 8" black, kit of 10



GK-C58T



HG-58



SH-U58



SH-S78

Part Number	Description
	RF Jumpers (Additional Lengths/Configurations Available)
E4S0183B43MB43M	Jumper, Premium, EC4-50, 6', with 4.3-10M to 4.3-10M connectors, includes two boots, one on each end
E4S0183BDMB43M	Jumper, Premium, EC4-50, 6', with DM to 4.3-10M connectors, includes two boots, one on each end
	Power Cables
HP14/2C	Power cable(2) 14 AWG copper conductors
HP206	Power cable(2) 6mm² copper conductors
	Fiber Jumpers (Additional Lengths/Configurations Available)
HF2S500LCLC-A/B	Fiber Jumper with 2 single mode fibers, 5 meters, with duplexed LC to LC connectors, outdoor rated jacket, clipped A/B and B/A

Rack Mount Items

Part Number	Description
RBMD6777BDU48	3 RU rack-mounted DC surge suppression system for use in Remote Radio Head (RRH) and multi-circuit, distributed antenna systems (breakers not included)
RTF4501	Fiber management and storage for up to 40ft of excess fiber, Removable lid with cable entry from the back. Indoor fiber patching solution for up to 12 pairs of fiber, 2U design fits in either 19" or 23" rack.
RTF4575	Fiber management and storage for up to 40ft of excess fiber, Pull out drawer with cable entry from the back. Indoor fiber patching solution for up to 12 pairs of fiber, 2U design fits in either 19" or 23" rack.



RBMD6777BDU48



RTF-4575



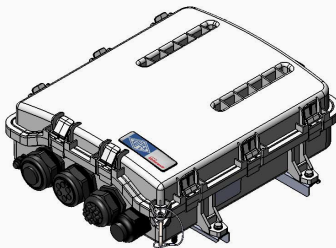
RTF-4501

Junction Box Options

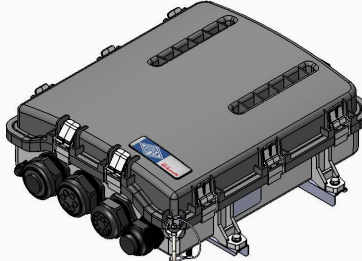
Part Number	Description
SC2DC86922P48F	Junction Box with (1) OVP and (1) circuits for (1) 5/8" hybrid feeder cable
RCKDC6140PF48	Junction Box with (6) OVPs and (6) discrete circuits for (1) 1-1/4" or (2) 5/8" or 7/8" hybrid feeder cables
REKDC9234PF48	Junction Box with (3) OVPs and (3) discrete circuits for (1) 1-1/4" or (2) 5/8" or 7/8" hybrid feeder cables
JB3E9F6PY	Junction Box with (3) OVPs and (3) discrete circuits for (1) 1-1/4" or (1) 5/8" or 7/8" hybrid feeder cables
JB6E9F6PY	Junction Box with (6) OVPs and (6) discrete circuits for (1) 1-1/4" or (2) 7/8" or (1) 5/8" hybrid feeder cables, (6) 11 mm power cables and (9) 6 mm fiber jumpers



SC2DC86922P48F



RCKDC6140PF48 / JB3E9F6PY



REKDC9234PF48 / JB6E9F6PY



EUPEN **CABLE USA**

CUSTOMERSERVICE@EUPEN.US

5181 110th Ave N, Unit D
Clearwater, FL 33760

Customer Service - 800.419.5100

www.eupen.us