



Fiber Adapter Plate, Multimode 6 LC Duplex Couplers

These pre-loaded, LGX Fiber Adapter Panels house 6 Duplex LC Multimode OM3/OM4 couplers. They were designed for our FB36- and FB23- LGX style patch panels and enclosures. They are perfect for providing connections between outside plant, riser, or distribution cables.

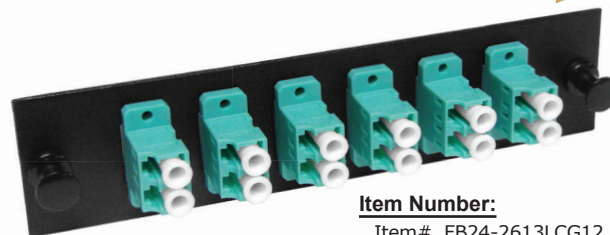
Features

- Cold Rolled Steel
- 6x Duplex LC Connections
- Durable Powder Coated Black
- For Multimode OM3/OM4 Fiber
- LGX Adapter Plate Foot Print

Physical Characteristics

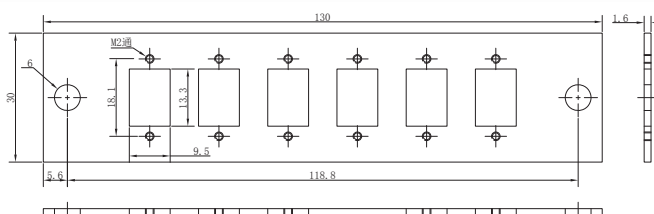
- Plate: Cold Rolled Steel, 1.6mm Thick
- Panel Foot Print: LGX
- Duplex LC Multimode OM3/OM4 Couplers
- Dimensions: 130mm x 30mm
- Finish: Black Powder Coated Paint

Fiber Adapter Plate



Item Number:

Item# FB24-2613LCG12



Optional Fiber Patch Panel Enclosures & Jumpers

• Fiber Distribution Unit (FDU) Patch Panel Enclosure, High Density, Slide-Out, LGX Style

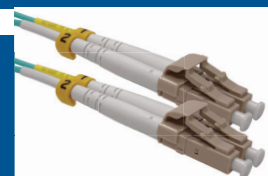
Our slide-out rack mount high density FDU enclosure provides fiber capacity of up to 72 fibers (1U) and 144 Fibers (2U). This FDU Panel is designed to support both patching and splicing in one distribution panel. The distribution panel has a slide out master panel with an integrated tray stop to prevent over extension of fiber cables. The distribution panel also has a two piece top and a latch door to allow for easy access to the adapter panel.

1U - FB36-6153R3 / 2U - FB36-6260R6



• Fiber Optic Patch Cords, Multimode OM3, LC-LC, LC-SC & LC-ST Connectors

Our Multimode 50/125 (OM3) fiber optic patch cords are terminated with state-of-the-art connectors, which are available in LC-LC, LC-ST and LC-SC to meet your standard or custom configurations. Our fiber jumpers have been geometrically inspected with interferometers and tested with automated insertion loss and reflection test equipment to ensure exceptional performance.



©2018 CRN Solutions Inc. dba. Primus Cable
All Rights Reserved.

Although Primus Cable makes every reasonable effort to ensure their accuracy at the time of this publication, information and specifications described herein are subject to error or omission and to change without notice, and the listing of such information and specifications does not ensure product availability.

Primus Cable provides the information and specifications herein on an "AS IS" basis, with no representations or warranties, whether express, statutory or implied. In no event will Primus Cable be liable for any damages (including consequential, indirect, incidental, special, punitive, or exemplary damages) whatsoever, even if Primus Cable has been advised of the possibility of such damages, whether in an action under contract, negligence or any other theory, arising out of or in connection with the use, or inability to use, the information or specifications described herein.

All sales of Primus Cable products are subject to Primus Cable's standard terms and conditions of sale.

Primus Cable believes this product to be in compliance with EU RoHS (Directive 2002/EC, 27 Jan. 2003). Material manufactured prior to the compliance date may be in stock at Primus Cable facilities and in our Distributor's inventory. The information provided in this Product Disclosure, and the identification of materials listed as reportable or restricted within the Product Disclosure, is correct to the best of Primus Cable's knowledge, information, and belief at the date any other operation of the product itself or the one that it becomes a part of. This Product Disclosure is not to be considered a warranty or quality specification and regulations based on their individual usage of the product.

Primus Cable declares this product to be in compliance with EU LVD (Low Voltage Directive 73/23/EEC), as amended by directive 93/68/EEC

PrimusCable.com - (951) 824-1571