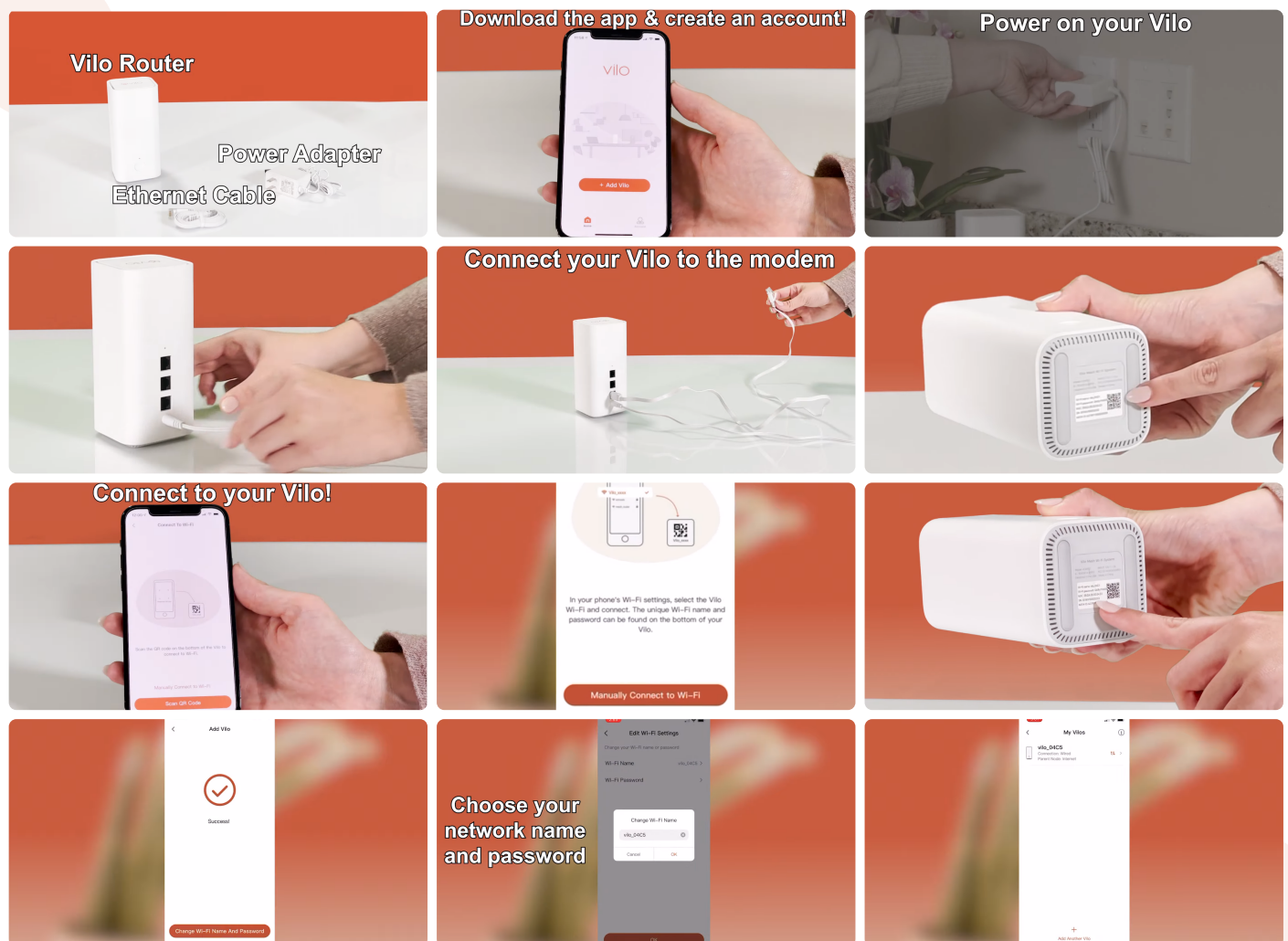




## Setting up your Vilo system

Setting up your Vilo is easy, each Vilo comes with a quick start guide (shown below) or you can watch our setup video here. [https://youtu.be/MkvMFvA\\_v0](https://youtu.be/MkvMFvA_v0)

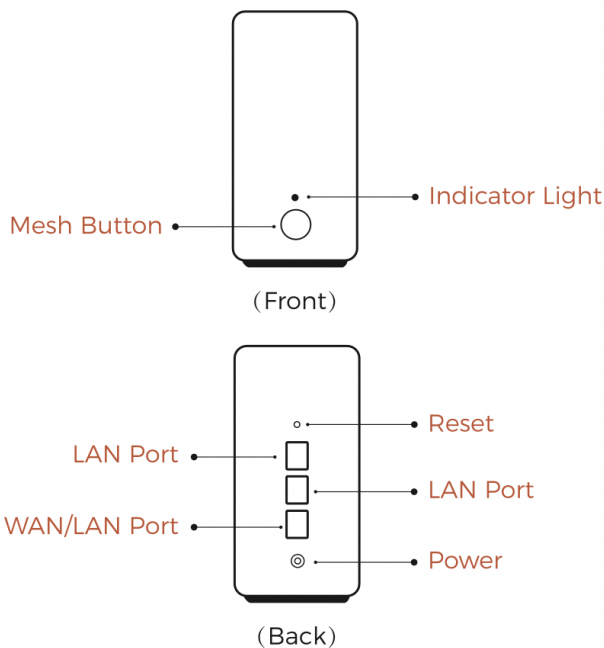


Enjoy your  Vilo Network



If you need further details on how to set up your Vilo see the instructions below.

### AT A GLANCE



#### Reset

Long press to restore to factory settings.

#### LAN Port

Used to connect wired devices.

#### WAN/LAN Port

On main router: as WAN port, used to connect to modem.

On sub router: as LAN port, used to connect wired devices.

### LET'S GET STARTED

- 1 Download the Vilo App  
Download and install the Vilo App on your phone.



- 2 Add your first Vilo  
Follow the on-screen instructions in the app to add your first Vilo and set up your Wi-Fi network.



- 3 Add additional Vilos  
Add additional Vilos by tapping the "+" sign in the Vilo App and following the on-screen instructions. Repeat this process until all your Vilos are connected.



### How to set up your main Vilo

First make sure you have downloaded the Vilo App and created an account. Once logged into the app, click "Add Vilo" on the home screen, and follow the instructions on each screen to set up your main Vilo. Ensure the light on your Vilo is solid amber, this means it is ready for setup.

The last setup page is "Connect To Wi-Fi", hit the button "Scan QR Code" then scan the QR code on the bottom of your Vilo to connect to the Wi-Fi. If you are using an Android device, or are unable to connect using the QR code scanner, select the "Manually Connect to Wi-Fi" button. This will take you to the Wi-Fi settings page on your phone. Here you can select the Wi-Fi network with the name matching the Wi-Fi name on the bottom of your Vilo and connect using the password on the bottom of your Vilo. Once connected and back in the Vilo app you should see the "Add Vilo" page in the app, hit the button "Add Vilo to My Account", your Vilo will start to bind your account on the cloud and your network is now set up!

If the Vilo app detects your home network as DHCP, then on the "Add Vilo" page when it shows "Success", you can hit the button "Change Wi-Fi name and password" and here you will be able to change the Wi-Fi name and password to a personalized name and password.