

Lightsaber NID box, Splice Type, pre-loaded with 1 * SC/APC Simplex Adapter

The LightSaber NID Box is a compact outdoor fiber optic network interface device designed to withstand the harsh conditions of outside deployment. Available Inserts include Insert for LGX type NID, Insert for ONT type NID, and Insert for PATCH type NID.

Specifications

Construction:

- Fiber Entry Terminal (FET) made of high-impact thermoplastic material designed for harsh outdoor environments
- Holds 1 LGX Adapter plate (can splice up to 12 single fibers)
- Color: Light Gray
- Up to 1-inch Conduit entry point with tie down
- Variable cable entry clamp designed for round or flat drop cable
 - Round OD: 3mm to 16.2mm,
 - Flat cable OD: 2mm to 8.1 x 4.5mm

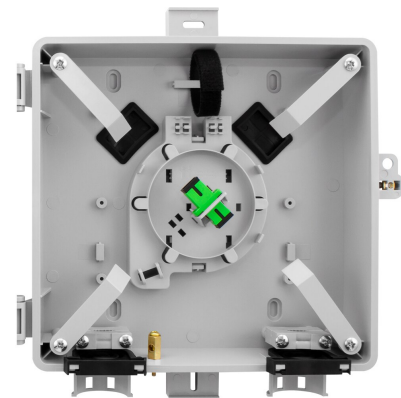
Included Hardware:

- (12) 40mm splice sleeves, (1) 40mm mass splice sleeve
- (1) ½ Velcro strip
- (4) 4-inch zip ties
- (1) Splice chip (12-fiber)
- (4) M4 x 50mm screws and anchors
- (1) electrical ground contact
- Available preloaded with (1) LGX adapter plate, (6) SC, (6) duplex LC, or (6) 12-fiber MPO adapters and corresponding pigtails

Industry Standards

- Designed to GR-771

Add-Ons



LSO-NIDbox-LGX-Insert
LightSaber Insert for LGX type NID



LSO-NIDbox-ONT-Insert
LightSaber Insert for ONT type NID



LSO-NIDbox-PATCH-insert
LightSaber Insert for PATCH type NIDbox