

D

C

B

A

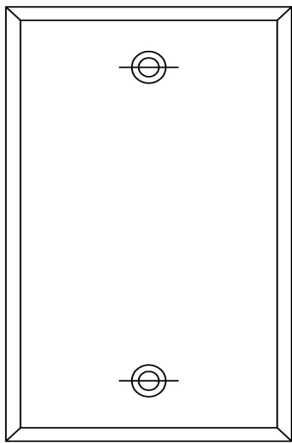
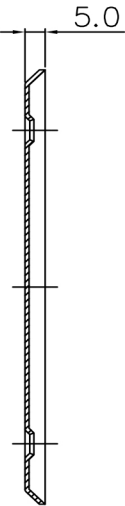
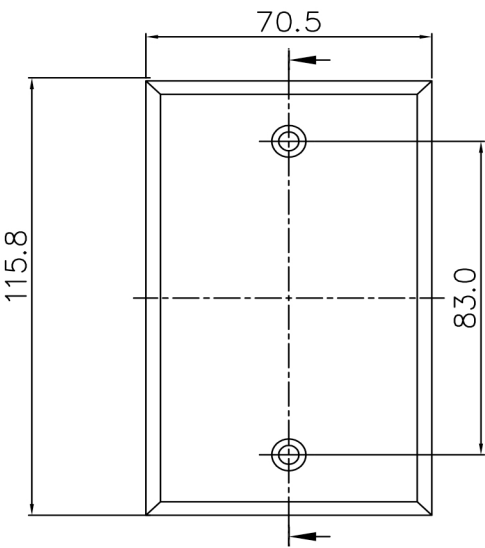
D

C

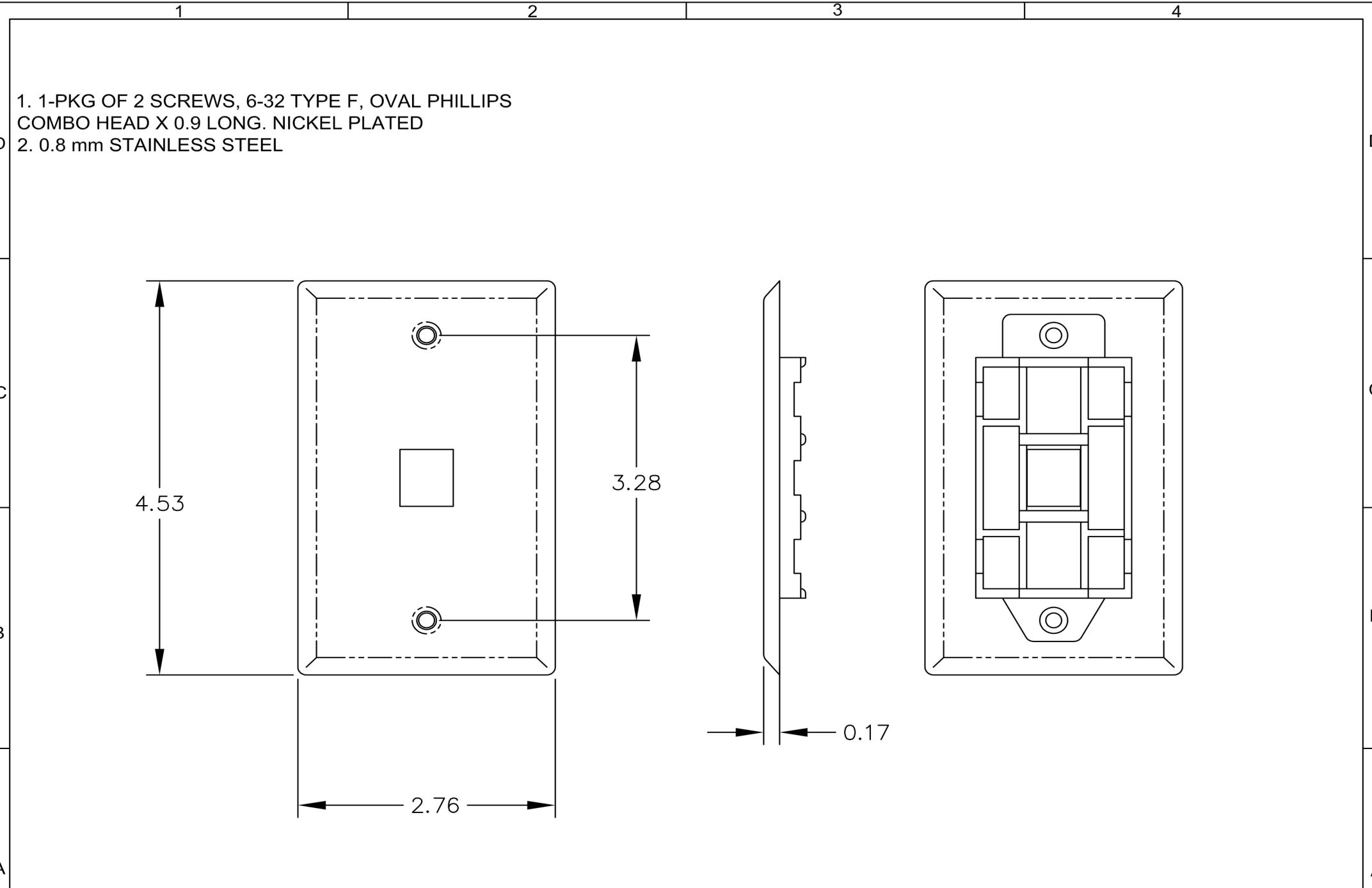
B

A

ZONE	REV	DESCRIPTION	DATE	APPV.
-	A	RELEASED.	09/16/2008	E.A.

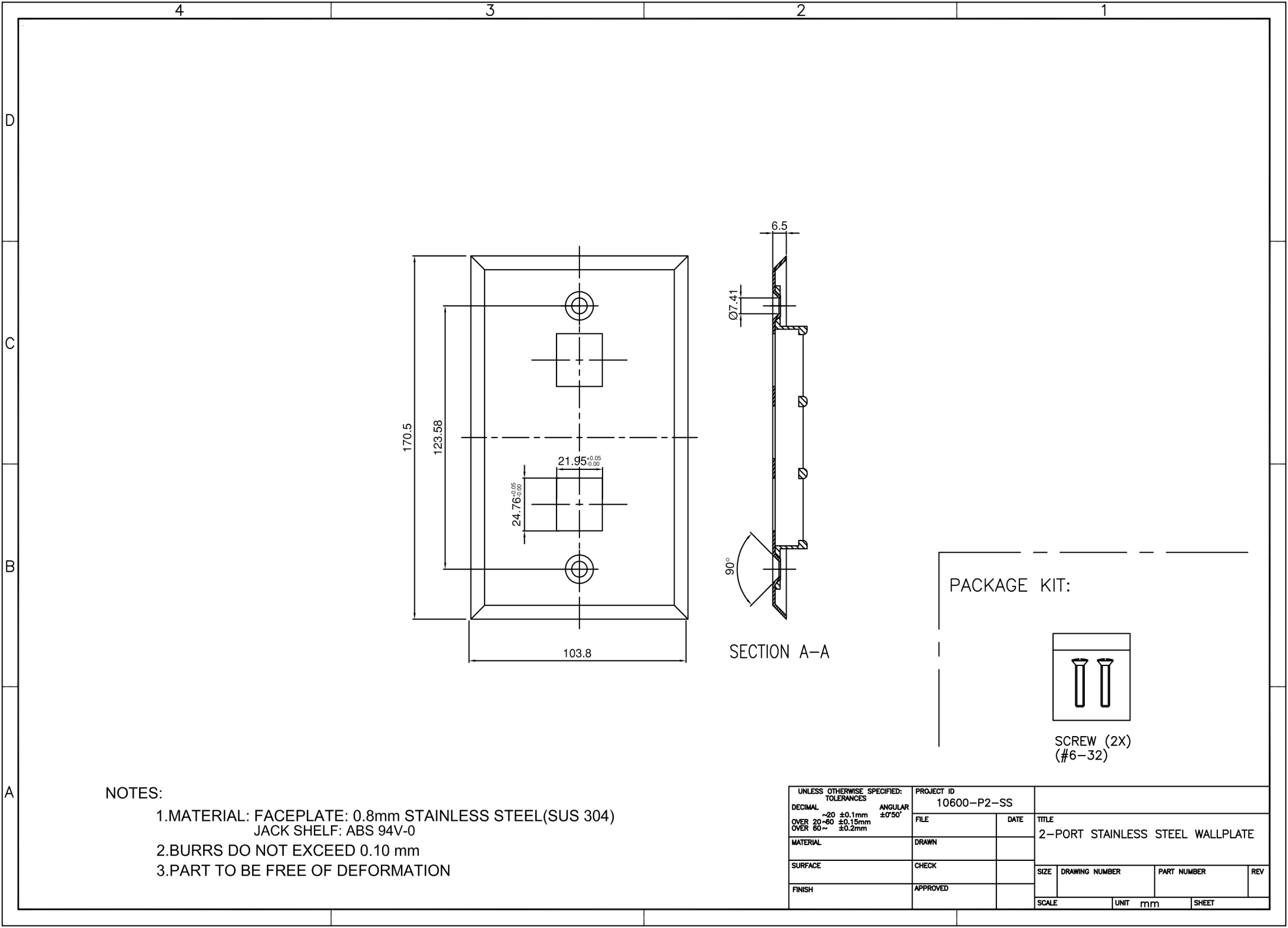


Dimensions: mm - DO NOT SCALE DRAWING				
NEXT ASSY-		DRAWN:		CHECKED.
TITLE:		DWG. NO.		REV.
Wallplate, Blank Single-Gang, Stainless Steel		10600-PB-SS		A
		SHEET 1 OF 1		

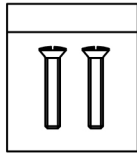


1. 1-PKG OF 2 SCREWS, 6-32 TYPE F, OVAL PHILLIPS  
COMBO HEAD X 0.9 LONG. NICKEL PLATED  
2. 0.8 mm STAINLESS STEEL

		All Dimensions Are In Milimeters (mm)		
		TITLE:	1 Port Stainless Steel Wallplate	10600-P1-SS
1	2	3	4	REV.



PACKAGE KIT:



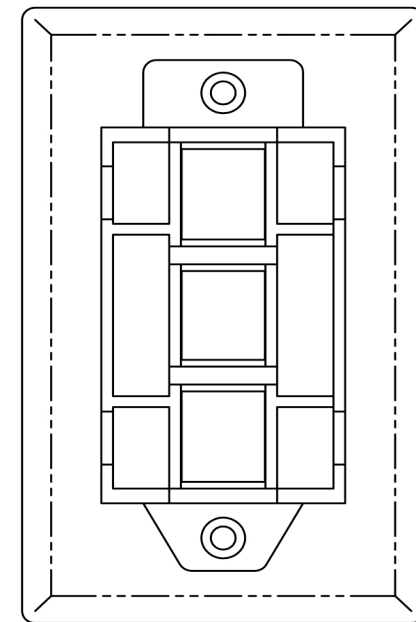
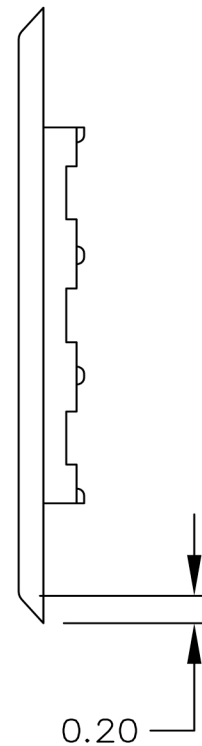
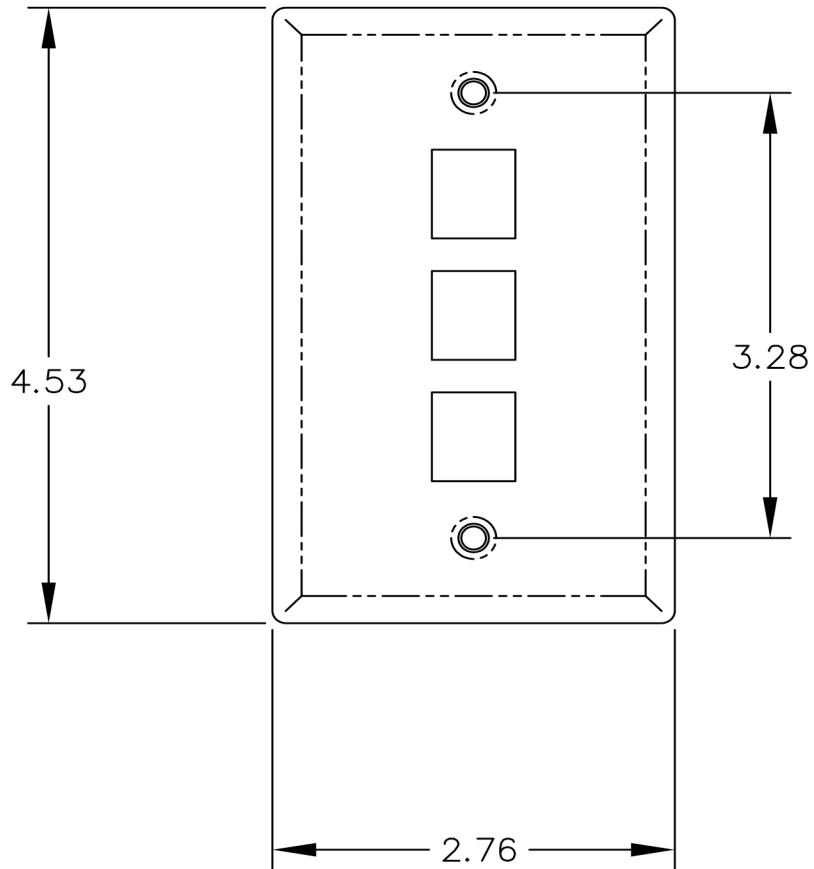
SCREW (2X)  
(#6-32)

NOTES:

- 1.MATERIAL: FACEPLATE: 0.8mm STAINLESS STEEL(SUS 304)  
JACK SHELF: ABS 94V-0
- 2.BURRS DO NOT EXCEED 0.10 mm
- 3.PART TO BE FREE OF DEFORMATION

UNLESS OTHERWISE SPECIFIED: TOLERANCES			PROJECT ID 10600-P2-SS					
DECIMAL	~20	±0.1mm	ANGULAR	±0°50'				
OVER 20~60		±0.15mm						
OVER 60~		±0.2mm						
MATERIAL			DRAWN		TITLE 2-PORT STAINLESS STEEL WALLPLATE			
SURFACE			CHECK					
FINISH			APPROVED		SIZE			
					DRAWING NUMBER		PART NUMBER	
							REV	
					SCALE		UNIT mm	
							SHEET	

1. 1-PKG OF 2 SCREWS, 6-32 TYPE F, OVAL PHILLIPS  
COMBO HEAD X 0.9 LONG. NICKEL PLATED  
2. 0.8 mm STAINLESS STEEL

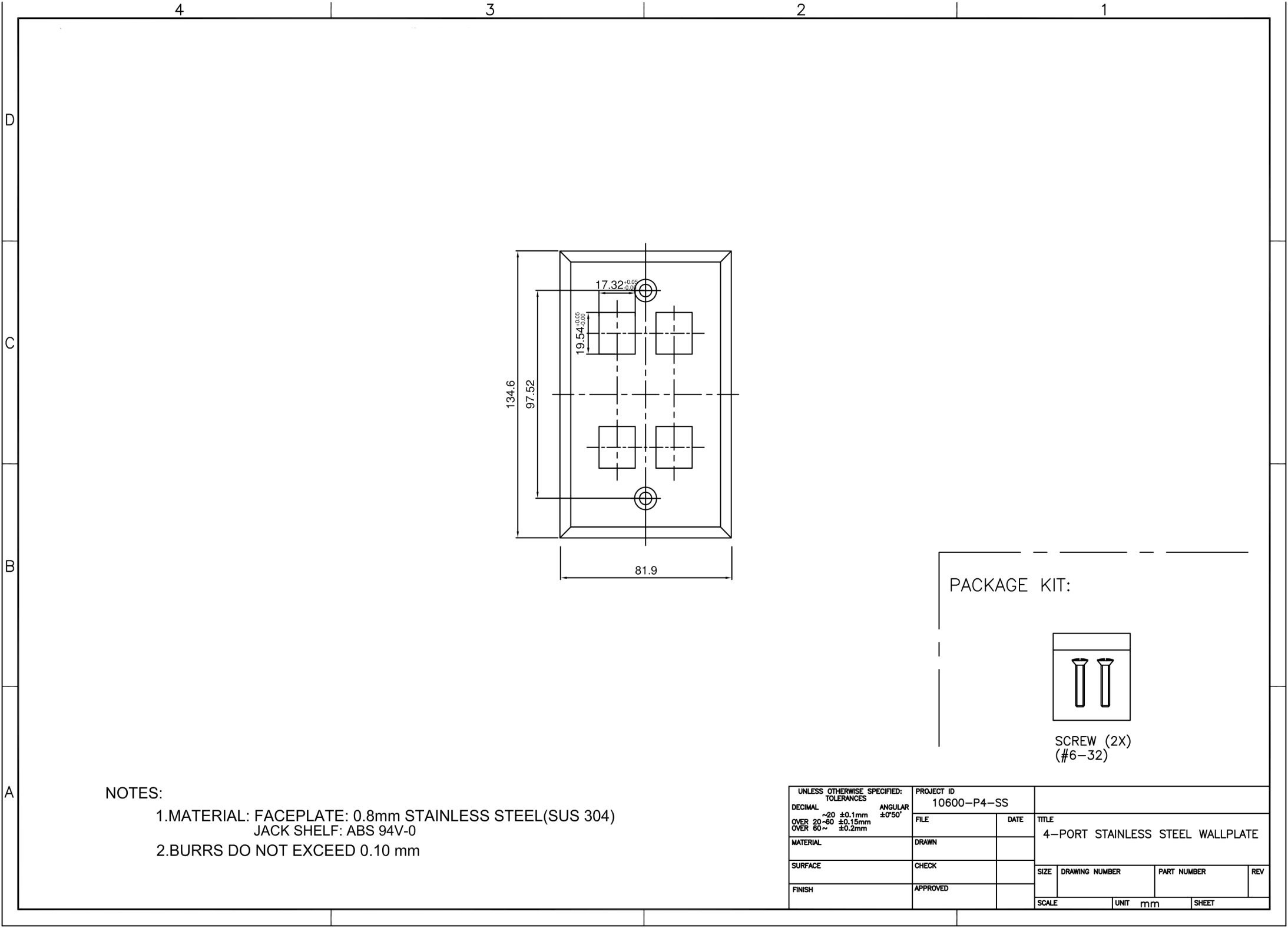


All Dimensions Are In Inches (in)

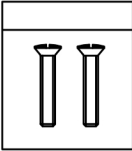
TITLE:  
3 Port Stainless Steel Wallplate

10600-P3-SS

REV.



PACKAGE KIT:



SCREW (2X)  
(#6-32)

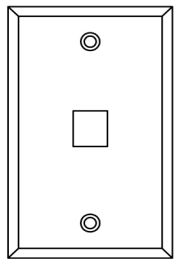
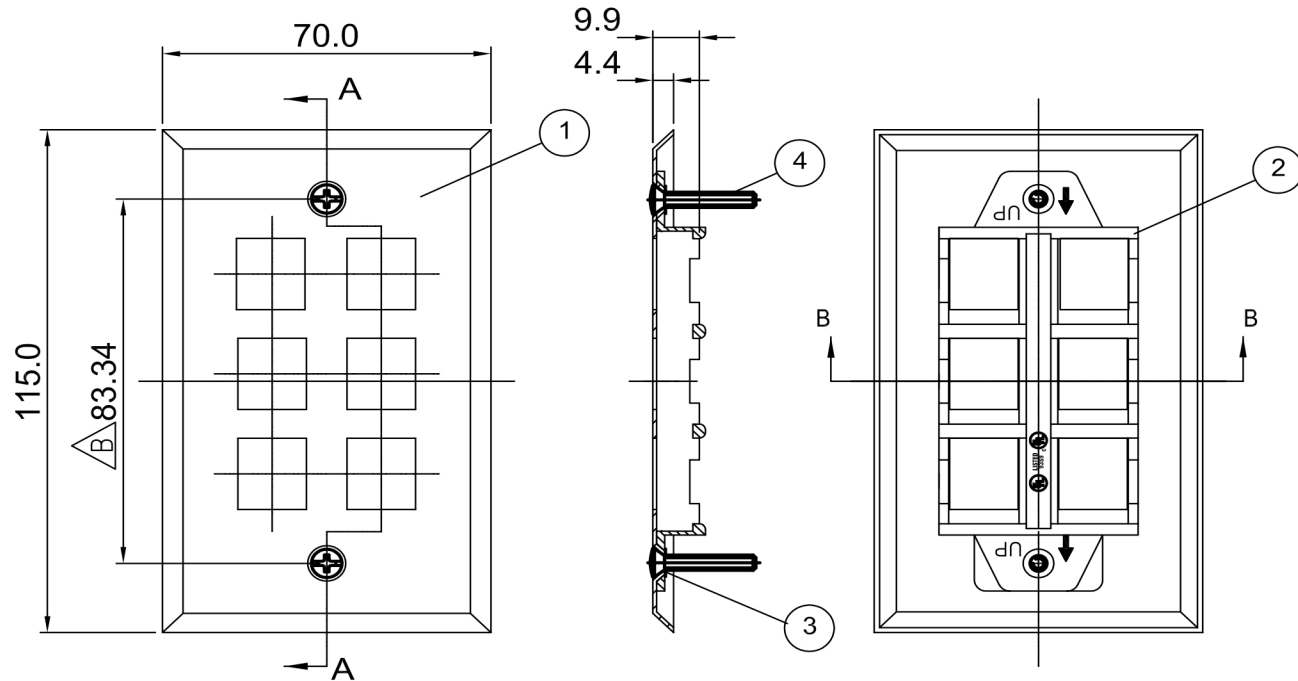
NOTES:

- 1.MATERIAL: FACEPLATE: 0.8mm STAINLESS STEEL(SUS 304)  
JACK SHELF: ABS 94V-0
- 2.BURRS DO NOT EXCEED 0.10 mm

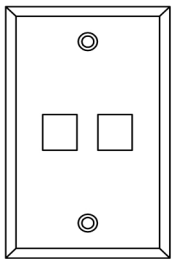
UNLESS OTHERWISE SPECIFIED: TOLERANCES			PROJECT ID 10600-P4-SS		TITLE 4-PORT STAINLESS STEEL WALLPLATE			
DECIMAL	~20	±0.1mm	ANGULAR	±0°50'	FILE	DATE	SIZE	
OVER 20~60	±0.15mm				DRAWN		DRAWING NUMBER	PART NUMBER
OVER 60~	±0.2mm				CHECK		REV	
MATERIAL					APPROVED		SCALE	UNIT mm SHEET
SURFACE								
FINISH								

ZONE	REV	DESCRIPTION	DATE	APPV.
-	A	RELEASED.	09/16/2008	E.A.

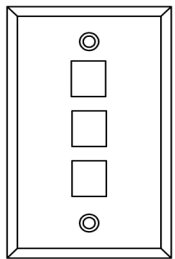
4	SCREW	2
3	RIVET	2
2	JACK SHELF	1
1	PLATE	1
NO.	PART NAME	Q'TY



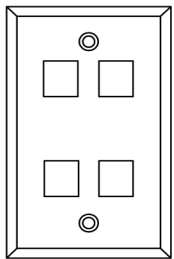
10600-P1-SS



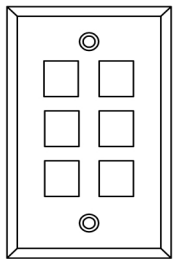
10600-P2-SS



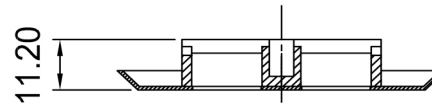
10600-P3-SS



10600-P4-SS



10600-P6-SS



Dimensions: mm - DO NOT SCALE DRAWING

NEXT ASSY:-

DRAWN: E.A.

CHECKED: E.A.

TITLE:

**1-Port, Wallplate**  
**Single-Gang (Satin Finish)**

DWG. NO.

SHEET 1 OF 1

REV.

**10600-P1-SS**

**A**