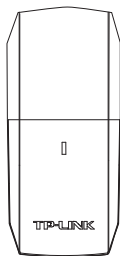


Quick Installation Guide



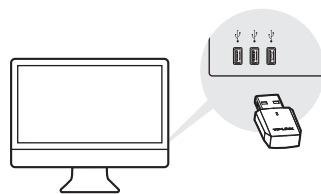
For Mac OS X

AC600 Wireless Dual Band USB Adapter
MODEL NO. ArcherT2U

7106506623 REV3.1.0

1 Connect to a Computer

Insert the adapter into a USB port on your computer directly.



2 Install Driver and Utility

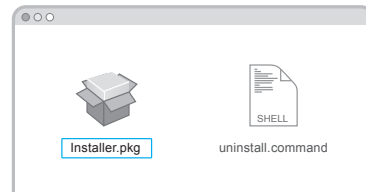
a. Insert the CD.

Note:

You can also download the driver and utility at <http://www.tp-link.com>.

b. Browse the CD, go to **Archer T2U_T2UH > Mac OS X Driver**, unzip the **TP-LINK_Installer.dmg** file and run the Installer.

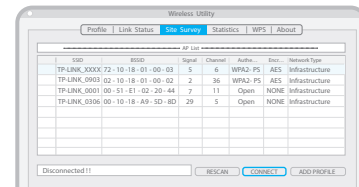
c. Follow the wizard to complete the installation.



3 Join a Wireless Network

Via TP-LINK Utility

- Select the **Site Survey** tab of the pop-up utility window.
- Select your Wi-Fi network and click **CONNECT**. The connection status can be viewed on the Link Status screen.

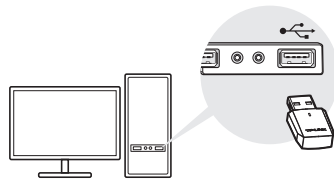




For Windows

1 Connect to a Computer

Insert the adapter into a USB port on your computer directly.



Notes:

1. In Windows XP, a **Found New Hardware Wizard** window will appear when the adapter is detected. Please click **Cancel**.
2. In Windows 8.1 and Windows 10, the adapter is able to search for Wi-Fi networks after being inserted, but it will not function properly until you install the driver and utility.

This USB Adapter can only be powered by computers that comply with Limited Power Source (LPS).

2 Install Driver and Utility

a. Insert the CD and run the **Autorun.exe** from the pop-up Autoplay window.

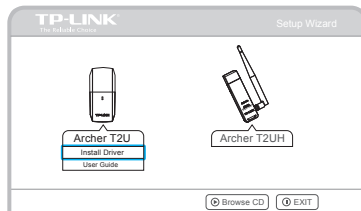
Notes:

1. You can also download the driver and utility at <http://www.tp-link.com>.
2. In some operating systems, the CD screen will pop up automatically. Otherwise, run the CD manually.

b. Select **Archer T2U** and click **Install Driver**, then follow the InstallShield Wizard to complete the installation.

Note:

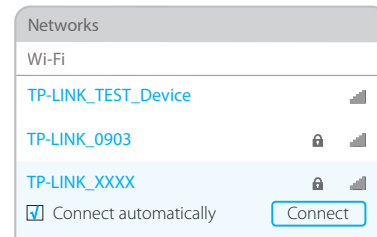
During the installation, select **TP-LINK Wireless Configuration Utility and Driver** if you want to use TP-LINK Utility and WPS function.



3 Join a Wireless Network

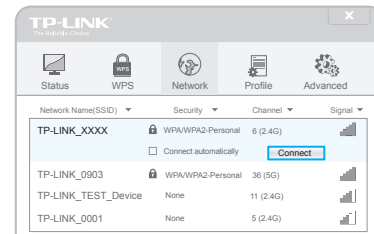
Option 1: Via Windows Wireless Utility

Click or (Network icon) on the task bar, select your Wi-Fi network, and click **Connect**.



Option 2: Via TP-LINK Utility

Select your Wi-Fi network from the utility window and click **Connect**. The symbol indicates a successful connection.



For more information, please visit our website <http://www.tp-link.com>
©2016 TP-LINK