


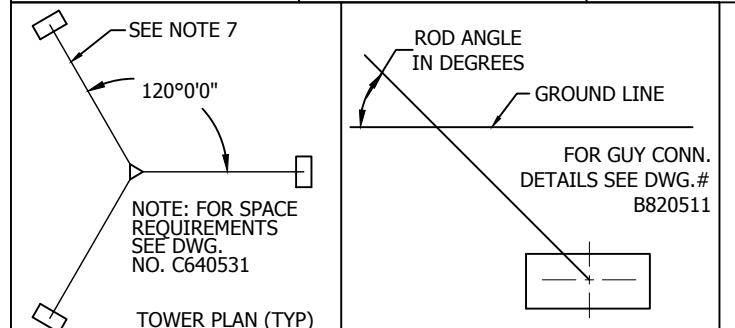
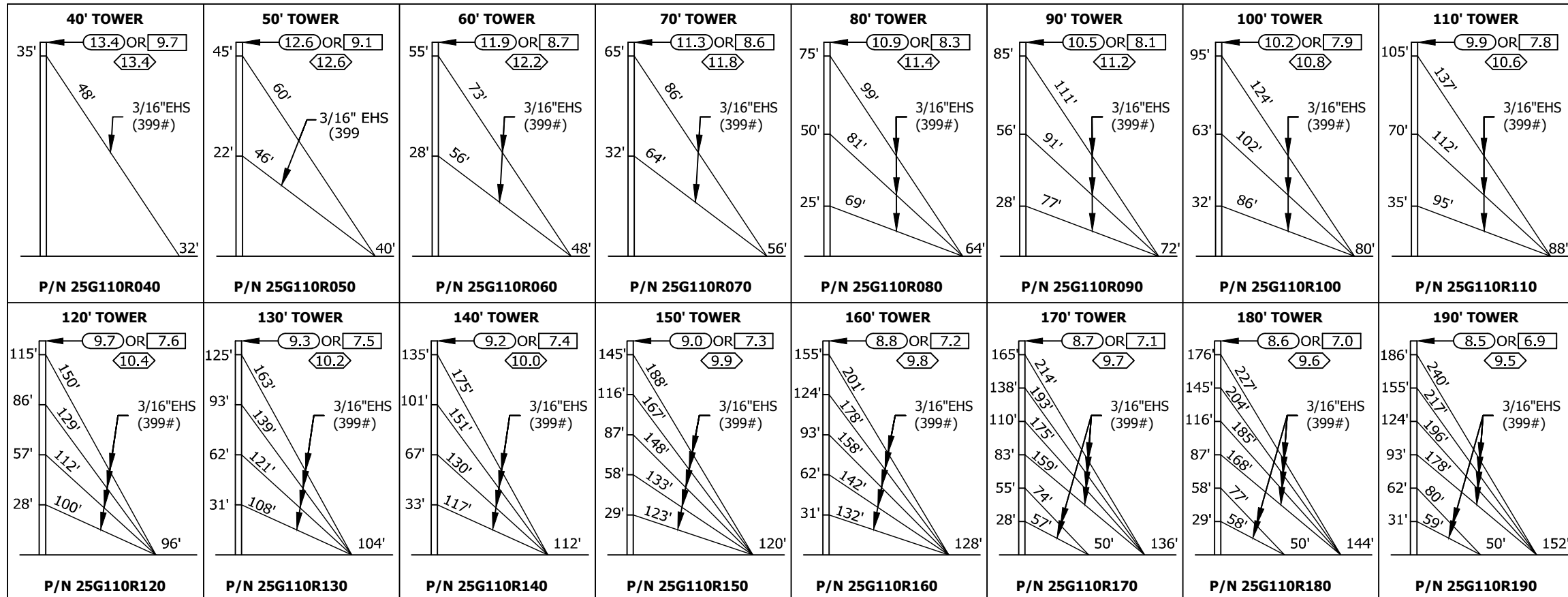
PRE-INSTALLATION INSPECTION

THANK YOU FOR THE PURCHASE OF YOUR ROHN PRODUCT. WE ARE EXCITED THAT YOU CHOOSE ROHN TO SUPPLY YOU WITH A QUALITY PRODUCT. IN ORDER TO COMMUNICATE EFFECTIVELY, ELIMINATE ERRORS AND PROVIDE A SMOOTH INSTALLATION EXPERIENCE, IT IS IMPORTANT FOR THE INSTALLER TO PERFORM A PRE-INSTALLATION INSPECTION OF ALL COMPONENTS/PARTS ASSOCIATED WITH YOUR ORDER. PRIOR TO THE INSTALLATION, THE FOLLOWING INSPECTIONS ARE REQUIRED:

- UPON RECEIPT OF SHIPMENT, ALL PARTS/MATERIALS MUST BE INVENTORIED. THIS INCLUDES ALL TOWERS, MONOPOLES, GUYED MASTS, ANCHOR RODS & TEMPLATES, MOUNTS OR OTHER PRODUCTS THAT ARE DELIVERED TO A CONTRACTOR'S OFFICE, JOB SITE OR SOME OTHER AGREED UPON DESTINATION.
- IF PART SHORTAGES OR DAMAGED MATERIAL ARE FOUND, ROHN MUST BE NOTIFIED IMMEDIATELY TO ALLOW ROHN TIME TO REPAIR OR EXPEDITE NEW PARTS/MATERIALS TO THE JOB SITE.
- IF THERE ARE PARTS THAT ARE FABRICATED INCORRECTLY AND THE PARTS WERE NOT EASILY DETECTABLE DURING THE PRE-INSTALLATION INSPECTION, ROHN MUST BE NOTIFIED IMMEDIATELY UPON IDENTIFICATION OF THE PARTS. IN ADDITION, PICTURES MUST BE TAKEN OF THE ISSUES AND SENT TO ROHN IMMEDIATELY.
- IT IS IMPORTANT TO VERIFY THE ASSEMBLY DRAWINGS AND ANCHOR ROD LAYOUT DRAWINGS ARE RECEIVED WITH THE DELIVERY, WHEN ANCHOR RODS ARE TO BE INSTALLED. IN ADDITION, IT IS IMPORTANT TO VERIFY THE ANCHOR ROD TEMPLATE PART NUMBERS MATCH THE DESIGNATED PART NUMBERS ON THE ANCHOR ROD LAYOUT DRAWING. IF THERE ARE DISCREPANCIES, NOTIFY ROHN IMMEDIATELY. ROHN WILL NOT BE RESPONSIBLE FOR CHARGES ASSOCIATED WITH INSTALLING THE WRONG SIZE ANCHOR RODS, THE WRONG NUMBER OF ANCHOR RODS OR THE INCORRECT ANCHOR ROD ORIENTATION.
- ROHN WILL NOT BE RESPONSIBLE FOR EXCESS CHARGES INCLUDING CRANE CHARGES, DRILLING RIG CHARGES, EQUIPMENT CHARGES, CREW CHARGES AND MOBILIZATION CHARGES.
- IF YOU HAVE ANY QUESTIONS, PLEASE CONTACT THE APPROPRIATE ROHN SALES REP/MANAGER AT (309) 566-3000.

FILE NO.					ROHN				
REVISIONS									
REV.	DESCRIPTION	DWN	CHK	APP					
 PO BOX 5999 PEORIA, IL 61601-5999 TOLL FREE 800-727-ROHN									
<small>THIS DRAWING IS THE PROPERTY OF ROHN. IT IS NOT TO BE REPRODUCED, COPIED OR TRACED IN WHOLE OR IN PART WITHOUT OUR WRITTEN CONSENT.</small>									
PRE-INSTALLATION INSPECTION FORM NUMBER: FM060									
DWN:		CHK'D:		DATE:					
JHY		JDM		09/03/2019					
ENGR:			SHEET #:						
HA			1 OF 1						
PRJ. ENGR:				PRJ. MANG'R:					
DRAWING NO:								REV:	
FM060								0	

REVISIONS				
REV.	DESCRIPTION	DWN	CHK	APP
1	REVISED GENERAL NOTE 1 AND ANCHOR ROD ANGLES DATE: Jan/29/2010	JWS	KTL	HA
2	REVISED ANCHOR ROD NO. AND REMOVED "ANCHOR ROD SLOPE" NOTE DATE: May/07/2010	JWS	KTL	HA



25G TOWER GUYING DETAILS
40' - 190'
110 MPH 3-SECOND GUST WIND SPEED
NO ICE (REV G)
90 MPH FASTEST MILE WIND SPEED
NO ICE (REV F)

GENERAL NOTES:

- TOWER DESIGNS ARE IN ACCORDANCE WITH ANSI/TIA-222-F & ANSI/TIA-222-G, CLASS I STRUCTURES.
- ALLOWABLE PROJ. AREA (SQ. FT.) FOR EXPOSURE B - (REV G).
□ ALLOWABLE PROJ. AREA (SQ. FT.) FOR EXPOSURE C - (REV G).
◇ ALLOWABLE PROJ. AREA (SQ.FT.) - (REV F).
- EFFECTIVE PROJ. AREAS MUST NOT EXCEED THE AREAS SHOWN.
- ANTENNAS AND MOUNTS ARE ASSUMED SYMMETRICALLY PLACED AT THE TOWER TOP.
- DESIGNS ASSUME ONE 1/2" DIA. LINE ON EACH TOWER FACE.
- FOR GUY HARDWARE INSTALLATION DETAILS, SEE DWG. A871382.
- ANCHOR RADIUS IS FROM TOWER BASE TO INTERSECTION OF ROD WITH GROUND.
- TOWER DESIGNS AND GUY CHORD LENGTHS SHOWN ARE BASED ON LEVEL GROUND. ADD 6 PERCENT TO CHORD LENGTHS (FOR SAG AND CONNECTIONS) FOR FINAL CUT LENGTHS. () INDICATES INITIAL TENSION FOR GUY WIRES IN POUNDS AT 60 DEGREES FAHRENHEIT.
- DO NOT INSTALL OR DISMANTLE TOWERS WITHIN FALLING DISTANCE OF ELECTRICAL AND/OR TELEPHONE LINES.
- TOWER ERECTION AND DISMANTLING MUST BE DONE BY QUALIFIED AND EXPERIENCED PERSONNEL.
- TEMPORARY STEEL GUYS, WHEN REQUIRED DURING ERECTION OR DISMANTLING, MUST BE SUPPLIED AND INSTALLED BY THE ERECTOR.
- INSTALL WARNING PLATE (P/N: ACWS) IN A HIGHLY VISIBLE LOCATION.
- ALL ANTENNA INSTALLATIONS MUST BE GROUNDED IN ACCORDANCE WITH LOCAL AND NATIONAL CODES.
- EXTRA CABLE CLAMPS HAVE BEEN PROVIDED FOR TURNBUCKLE SAFETY REQUIREMENTS. FOR DETAILS SEE DWG. B680324 LATEST REVISION.
- PURCHASER SHALL VERIFY THE INSTALLATION IS IN CONFORMANCE WITH LOCAL, STATE AND FEDERAL REQUIREMENTS FOR OBSTRUCTION MARKING AND LIGHTING.
- TOLERANCE ON TOWER STEEL IS EQUAL TO PLUS 1% AND MINUS 1/2%.
- DESIGNS ASSUME THAT, AS A MINIMUM, MAINTENANCE AND INSPECTION WILL BE PERFORMED OVER THE LIFE OF THE STRUCTURE IN ACCORDANCE WITH ANSI/TIA/EIA-222-G.
- ANCHOR RODS CORROSION PROTECTION METHODS TO BE PROVIDED BY OTHERS.

TOWER HT.	BASE PIER (DWG: B090549)		INNER ANCHOR DATA (DWG: B090550)		OUTER ANCHOR DATA (DWG: B090550)		
	NO.	BLOCK NO.	ROD NO.	ROD ANGLE	BLOCK NO.	ROD NO.	ROD ANGLE
40'	CB1G	AB2	GAC3455TOP	48	-	-	-
50'	CB1G	AB2	GAC3455TOP	41	-	-	-
60'	CB1G	AB2	GAC3455TOP	41	-	-	-
70'	CB1G	AB2	GAC3455TOP	41	-	-	-
80'	CB1G	AB2	GAC3455TOP	38	-	-	-
90'	CB1G	AB2	GAC3455TOP	38	-	-	-
100'	CB1G	AB2	GAC3455TOP	39	-	-	-
110'	CB1G	AB2	GAC3455TOP	38	-	-	-
120'	CB1G	AB2	GAC3455TOP	37	-	-	-
130'	CB1G	AB2	GAC3455TOP	37	-	-	-
140'	CB1G	AB2	GAC3455TOP	37	-	-	-
150'	CB1G	AB2	GAC3455TOP	36	-	-	-
160'	CB1G	AB2	GAC3455TOP	36	-	-	-
170'	CB2G	AB2	GAC3455TOP	40	AB2	GAC3455TOP	42
180'	CB2G	AB2	GAC3455TOP	41	AB2	GAC3455TOP	42
190'	CB2G	AB2	GAC3455TOP	43	AB2	GAC3455TOP	42

DWG REFERENCE

ROHN PRODUCTS
6718 WEST PLANK ROAD
PEORIA, IL 61604
TOLL FREE 800-727-ROHN

THIS DRAWING IS THE PROPERTY OF ROHN. IT IS NOT TO BE REPRODUCED, COPIED OR TRACED IN WHOLE OR IN PART WITHOUT OUR WRITTEN CONSENT.

ERECTION PROFILE
25G/110MPH 3-SECOND GUST/NO ICE G

DWN: JDM	CHK'D: H.A	DATE: Jan/23/2009
ENGR: H.A		REV: 2
DRAWING NO: B090091		

Jun/04/2010 1:02:19 PM

erection

FOUNDATION AND ANCHOR TOLERANCES

ALL FOUNDATIONS

1. CONCRETE DIMENSIONS: PLUS OR MINUS 1" (25mm)
2. DEPTH OF FOUNDATION: PLUS 3" (76mm) OR MINUS 0"
3. DRILLED FOUNDATIONS OUT OF PLUMB: 1.0°
4. REINFORCING STEEL PLACEMENT: PER A.C.I. 301
5. PROJECTION OF EMBEDMENTS: PLUS OR MINUS 1/8" (3mm)
6. VERTICAL EMBEDMENTS OUT OF PLUMB: 0.5°

ANCHOR BOLTS

7. MAXIMUM DISTANCE FROM CENTERLINE OF ANCHOR BOLTS TO CENTERLINE OF FOUNDATION: 1/24 OF PIER DIAMETER UP TO A MAXIMUM OF 2" (51mm)
8. ANCHOR BOLT SPACING: 1/16" (2mm)
9. ANCHOR BOLT CIRCLE ORIENTATION: 0.25°
10. ANCHOR BOLT CIRCLE DIAMETER: PLUS OR MINUS 1/16" (2mm)

SELF-SUPPORTING TOWERS

11. FACE SPREAD DIMENSION CENTER TO CENTER OF ANCHOR BOLT CIRCLES: PLUS OR MINUS 1/16" (2mm) OR 1/16" (2mm) PER 20 FT. (6m) OF FACE SPREAD
12. MAXIMUM DIFFERENCE BETWEEN ANY TWO FOUNDATION ELEVATIONS: 1/2" (13mm)

GUYED TOWERS

13. GUY RADIUS: PLUS OR MINUS 5% OF DISTANCE SPECIFIED
14. ANCHOR ELEVATION: PLUS OR MINUS 5% OF GUY RADIUS
15. ANCHOR ALIGNMENT (PERPENDICULAR TO GUY RADIUS): 1.0°
16. ANCHOR ROD SLOPE: PLUS OR MINUS 1.0°
17. ANCHOR ROD ALIGNMENT WITH GUY RADIUS: PLUS OR MINUS 1.0°
18. ANCHOR HEAD OUT OF PLUMB: 1.0°
19. GUY INITIAL TENSION: PLUS OR MINUS 10% OF TENSION SPECIFIED

NOTE: TOLERANCES IN NOTES 13 AND 14 CAN NOT OCCUR SIMULTANEOUSLY.

FILE NO.

REVISIONS

REV.	DESCRIPTION	DWN	CHK	APP
10	REMOVED WARNING TEXT DATE: 01/12/2017	MJH	JDM	HA



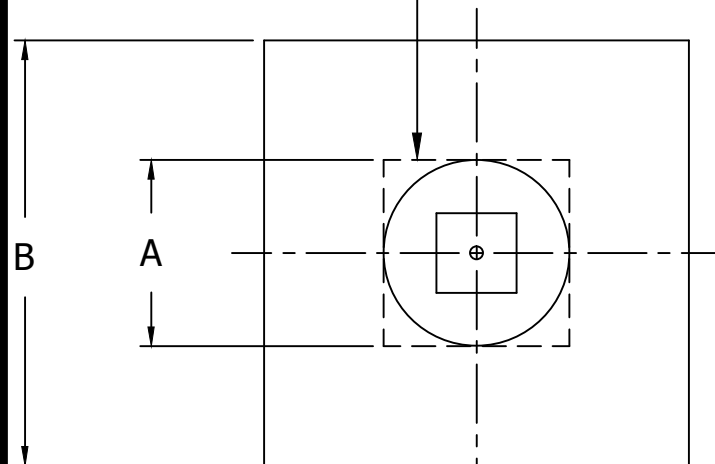
PO BOX 5999
PEORIA, IL 61601-5999
TOLL FREE 800-727-ROHN

THIS DRAWING IS THE PROPERTY OF ROHN. IT IS NOT TO BE REPRODUCED, COPIED OR TRACED IN WHOLE OR IN PART WITHOUT OUR WRITTEN CONSENT.

FOUNDATION & ANCHOR TOLERANCE

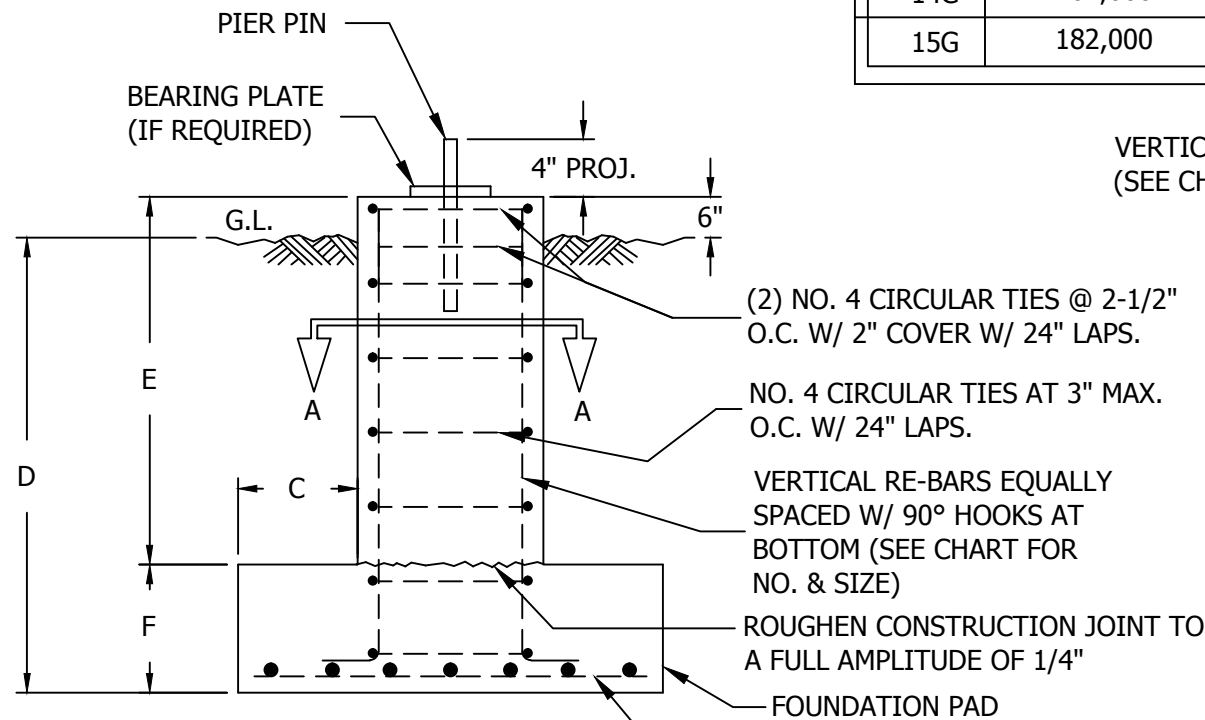
DWN: CSR	CHK'D: KTL	DATE: 09/25/1987	
ENGR: XK	SHEET #: 1 OF 1		
PRJ. ENGR:	PRJ. MANG'R:		
DRAWING NO: A810214		REV: 10	

ALTERNATE SQUARE PIER
(SEE NOTE 3)



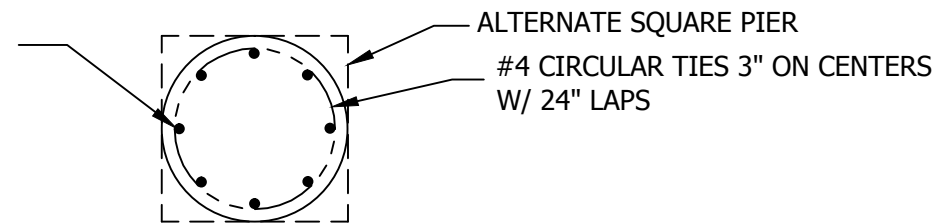
PLAN VIEW

CONCRETE BASE SCHEDULE FOR ANSI/TIA-222-G PRESUMPTIVE CLAY SOIL											
CB NO.	TOWER BASE REACTION (LBS)	DIMENSIONS						BEARING PLATE	CONC. (CU. YDS RD PIER)	VERTICAL BARS (NO. & SIZE)	HORIZ. BARS IN PAD (NO. & SIZE)
		* A	B	C	D	E	F				
1G	12,000	2'-6"	2'-6"	0	4'-0"	0	0	BP6	0.80	8 NO. 7	NONE
2G	17,000	3'-0"	3'-0"	0	4'-0"	0	0	BP6	1.20	10 NO. 7	NONE
3G	23,000	3'-6"	3'-6"	0	4'-0"	0	0	BP6	1.60	12 NO. 7	NONE
4G	30,000	4'-0"	4'-0"	0	4'-0"	0	0	BP6	2.10	12 NO. 8	NONE
5G	38,000	2'-0"	4'-0"	1'-0"	4'-0"	3'-3"	1'-3"	BP6	1.10	8 NO. 6	5 NO. 5
6G	48,000	2'-0"	4'-6"	1'-3"	4'-0"	3'-3"	1'-3"	BP6	1.30	8 NO. 6	6 NO. 5
7G	58,000	2'-0"	5'-0"	1'-6"	4'-6"	3'-9"	1'-3"	BP10	1.60	8 NO. 6	6 NO. 5
8G	71,000	2'-0"	5'-6"	1'-9"	4'-6"	3'-9"	1'-3"	BP10	1.80	8 NO. 6	7 NO. 5
9G	84,000	2'-0"	6'-0"	2'-0"	4'-6"	3'-6"	1'-6"	BP10	2.40	8 NO. 6	7 NO. 6
10G	99,000	2'-0"	6'-6"	2'-3"	4'-6"	3'-6"	1'-6"	BP10	2.80	8 NO. 6	8 NO. 5
11G	111,000	2'-6"	7'-0"	2'-3"	5'-0"	3'-9"	1'-9"	BP15	3.90	8 NO. 7	8 NO. 6
12G	127,000	2'-6"	7'-6"	2'-6"	5'-0"	3'-9"	1'-9"	BP15	4.30	8 NO. 7	9 NO. 6
13G	145,000	2'-6"	8'-0"	2'-9"	5'-0"	3'-9"	1'-9"	BP15	4.80	8 NO. 7	9 NO. 6
14G	162,000	3'-0"	8'-6"	2'-9"	5'-0"	3'-6"	2'-0"	BP15	6.30	12 NO. 7	9 NO. 7
15G	182,000	3'-0"	9'-0"	3'-0"	5'-0"	3'-6"	2'-0"	BP15	6.90	12 NO. 7	10 NO. 7



ELEVATION VIEW

VERTICAL BARS EQUALLY SPACED
(SEE CHART FOR NO. & SIZE)



SECTION A-A

NOTES:

1. SEE TOWER ASSEMBLY DRAWING FOR FOUNDATION LAYOUT AND PART NUMBERS FOR BEARING PLATE & PIER PIN.
2. SEE DRAWING NUMBER B090548 FOR STANDARD FOUNDATION NOTES.
- *3. USE MIN. 2'-6" SQ. OR 3'-0" DIA. ROUND PIER WHEN BPC45G OR BPC55G IS USED.
4. VERTICAL REINFORCING STEEL SHALL BE REPLACED WITH STRAIGHT BARS WHEN NO PAD IS REQUIRED.
5. HORIZ. BARS IN CHART REFER ONLY TO THE BARS IN THE FOUNDATION PAD.

FILE NO. STDPUBLIC			
REVISIONS			
REV.	DESCRIPTION	DWN	CHK APP
DWG REFERENCE			
6718 WEST PLANK ROAD PEORIA, IL 61604 TOLL FREE 800-727-ROHN			
THIS DRAWING IS THE PROPERTY OF ROHN. IT IS NOT TO BE REPRODUCED, COPIED OR TRACED IN WHOLE OR IN PART WITHOUT OUR WRITTEN CONSENT.			
FOUNDATION BASE PIER FOR REV. G PRESUMPTIVE CLAY			
DWN:	FAD	CHK'D:	HA
ENGR:	HA	DATE:	Nov/24/2009
DRAWING NO:	B090549	REV:	0

Nov/24/2009 9:08:40 AM

Erection

STANDARD FOUNDATION NOTES
ANSI/TIA-222-G/H

1. STANDARD FOUNDATION DESIGNS ARE IN ACCORDANCE WITH ANSI/TIA-222-G/H, "STRUCTURAL STANDARDS FOR STEEL ANTENNA TOWERS AND ANTENNA SUPPORTING STRUCTURES" FOR THE FOLLOWING PRESUMPTIVE CLAY SOIL PARAMETERS:

N (blows/ft) [blows/m]	Φ (deg)	γ (lb/ft3) [kN/m3]	C (psf) [kPa]	Ultimate Bearing (psf) [kPa]		Ultimate Skin Friction (psf) [kPa]	k (pci) [kN/m3]	ε ₅₀
				Shallow Fnds.	Deep Fnds.			
8 [26]	0	110 [17]	1000 [48]	5000 [240]	9000 [431]	500 [24]	150 [41,000]	0.01
GROUND WATER TABLE IS AT OR BELOW FOUNDATION DEPTH MAXIMUM FROST PENETRATION DEPTH LESS THAN FOUNDATION DEPTH								

2. THE PURCHASER SHALL VERIFY THAT ACTUAL SITE SOIL PARAMETERS MEET OR EXCEED ANSI/TIA-222-G/H PRESUMPTIVE CLAY SOIL DESIGN PARAMETERS AND THAT THE DEPTH OF STANDARD FOUNDATIONS ARE ADEQUATE BASED ON THE FROST PENETRATION AND/OR ZONE OF SEASONAL MOISTURE VARIATION AT THE SITE. FOUNDATION DESIGN MODIFICATIONS MAY BE REQUIRED IN THE EVENT PRESUMPTIVE CLAY SOIL PARAMETERS ARE NOT APPLICABLE FOR THE ACTUAL SUBSURFACE CONDITIONS ENCOUNTERED.
3. A SITE-SPECIFIC INVESTIGATION IS REQUIRED FOR CLASS III STRUCTURES IN ACCORDANCE WITH ANSI/TIA-222-G/H.
4. FOUNDATION DESIGNS ASSUME FIELD INSPECTIONS WILL BE PERFORMED BY THE PURCHASER'S REPRESENTATIVE TO VERIFY THAT CONSTRUCTION MATERIALS, INSTALLATION METHODS AND ASSUMED DESIGN PARAMETERS ARE ACCEPTABLE BASED ON THE CONDITIONS EXISTING AT THE SITE.
5. WORK SHALL BE IN ACCORDANCE WITH THE PROJECT CONSTRUCTION DOCUMENTS, LOCAL CODES, SAFETY REGULATIONS AND UNLESS OTHERWISE NOTED, THE LATEST REVISION OF ACI 318, "BUILDING CODE REQUIREMENTS FOR REINFORCED CONCRETE". PROCEDURES FOR THE PROTECTION OF EXCAVATIONS, EXISTING CONSTRUCTION AND UTILITIES SHALL BE ESTABLISHED PRIOR TO FOUNDATION INSTALLATION.
6. CONCRETE MATERIALS SHALL CONFORM TO THE APPROPRIATE STATE REQUIREMENTS FOR EXPOSED STRUCTURAL CONCRETE.
7. PROPORTIONS OF CONCRETE MATERIALS SHALL BE SUITABLE FOR THE INSTALLATION METHOD UTILIZED AND SHALL RESULT IN DURABLE CONCRETE FOR RESISTANCE TO LOCAL ANTICIPATED AGGRESSIVE ACTIONS. THE DURABILITY REQUIREMENT OF ACI 318 SHALL BE SATISFIED BASED ON THE CONDITIONS EXPECTED AT THE SITE. AS A MINIMUM, CONCRETE SHALL DEVELOP A MINIMUM COMPRESSIVE STRENGTH OF 4500 PSI (31.0 MPa) IN 28 DAYS.
8. MAXIMUM SIZE OF AGGREGATE SHALL NOT EXCEED SIZE SUITABLE FOR INSTALLATION METHOD UTILIZED OR 3/4 CLEAR DISTANCE BEHIND OR BETWEEN REINFORCING. WORKABILITY AND METHODS OF CONSOLIDATION SUCH AS VIBRATING SHALL BE UTILIZED TO PREVENT HONEYCOMBS OR VOIDS.
9. REINFORCEMENT SHALL BE DEFORMED AND CONFORM TO THE REQUIREMENTS OF ASTM A615 GRADE 60 UNLESS OTHERWISE NOTED. SPLICES IN REINFORCEMENT SHALL NOT BE ALLOWED UNLESS OTHERWISE INDICATED.
10. REINFORCING CAGES SHALL BE BRACED TO RETAIN PROPER DIMENSIONS DURING HANDLING, THROUGHOUT PLACEMENT OF CONCRETE AND DURING EXTRACTION OF TEMPORARY CASING.
11. WELDING IS PROHIBITED ON REINFORCING STEEL AND EMBEDMENTS.
12. MINIMUM CONCRETE COVER FOR REINFORCEMENT SHALL BE 3 INCHES (76 mm) UNLESS OTHERWISE NOTED. APPROVED SPACERS SHALL BE USED TO INSURE A 3 INCH (76 mm) MINIMUM COVER ON REINFORCEMENT. CONCRETE COVER FROM TOP OF FOUNDATION TO ENDS OF VERTICAL REINFORCEMENT SHALL NOT EXCEED 3 INCHES (76 mm) NOR BE LESS THAN 2 INCHES (51 mm).

13. SPACERS SHALL BE ATTACHED INTERMITTENTLY THROUGHOUT THE ENTIRE LENGTH OF VERTICAL REINFORCING CAGES TO INSURE CONCENTRIC PLACEMENT OF CAGES IN EXCAVATIONS.
14. FOUNDATION DESIGNS ASSUME STRUCTURAL BACKFILL TO BE COMPACTED IN 8 INCH (200 mm) MAXIMUM LAYERS TO 95% OF MAXIMUM DRY DENSITY AT OPTIMUM MOISTURE CONTENT IN ACCORDANCE WITH ASTM D698. ADDITIONALLY, STRUCTURAL BACKFILL MUST HAVE A MINIMUM COMPACTED UNIT WEIGHT OF 110 POUNDS PER CUBIC FOOT (17 kN/m3).
15. FOUNDATION DESIGNS ASSUME AN INSTALLATION ON A PROPERLY DRAINED LEVEL SITE.
16. FOUNDATION INSTALLATION SHALL BE SUPERVISED BY PERSONNEL KNOWLEDGEABLE AND EXPERIENCED WITH THE PROPOSED FOUNDATION TYPE. CONSTRUCTION SHALL BE IN ACCORDANCE WITH GENERALLY ACCEPTED INSTALLATION PRACTICES.
17. ALL CONSTRUCTION AND SAFETY EQUIPMENT AND TEMPORARY SUPPORTS REQUIRED FOR CONSTRUCTION SHALL BE DETERMINED, FURNISHED AND INSTALLED BY THE CONTRACTOR BASED ON THE MEANS AND METHODS CHOSEN BY THE CONTRACTOR. ALL CONSTRUCTION ACTIVITIES SHALL BE PERFORMED BY COMPETENT, QUALIFIED AND TRAINED PERSONNEL.
18. FOR FOUNDATION AND ANCHOR TOLERANCES SEE ANCHOR ROD LAYOUT DRAWING.
19. LOOSE MATERIAL SHALL BE REMOVED FROM BOTTOM OF EXCAVATION PRIOR TO CONCRETE PLACEMENT. SIDES OF EXCAVATION SHALL BE ROUGH AND FREE OF LOOSE CUTTINGS.
20. CONCRETE SHALL BE PLACED IN A MANNER THAT WILL PREVENT SEGREGATION OF CONCRETE MATERIALS, INFILTRATION OF WATER OR SOIL AND OTHER OCCURRENCES WHICH MAY DECREASE THE STRENGTH OR DURABILITY OF THE FOUNDATION.
21. FREE FALL CONCRETE MAY BE USED PROVIDED FALL IS VERTICAL DOWN WITHOUT HITTING SIDES OF EXCAVATION, FORMWORK, REINFORCING BARS, ANCHORAGES, FORM TIES, CAGE BRACING OR OTHER OBSTRUCTIONS. UNDER NO CIRCUMSTANCES SHALL CONCRETE FALL THROUGH WATER.
22. CONCRETE SHALL BE PLACED AGAINST UNDISTURBED SOIL EXCEPT FOR PIERS SUPPORTED ON SPREAD FOUNDATIONS. FORMS FOR PIERS SHALL BE REMOVED PRIOR TO PLACING STRUCTURAL BACKFILL.
23. CONSTRUCTION JOINTS, IF REQUIRED IN DRILLED PIER OR CAISSON FOUNDATIONS, SHALL BE AT LEAST 12 INCHES (305 mm) BELOW BOTTOM OF EMBEDMENTS AND MUST BE INTENTIONALLY ROUGHENED TO A FULL AMPLITUDE OF 1/4 INCH (6 mm). FOUNDATION DESIGN ASSUMES NO OTHER CONSTRUCTION JOINTS.
24. CONSTRUCTION JOINTS, IF REQUIRED AT THE BASE OF PIERS SUPPORTED ON SPREAD FOUNDATIONS, SHALL BE INTENTIONALLY ROUGHENED TO A FULL AMPLITUDE OF 1/4 INCH (6 mm). FOUNDATION DESIGN ASSUMES NO OTHER CONSTRUCTION JOINTS.
25. CASING, IF USED, SHALL NOT BE LEFT IN PLACE. EQUIPMENT, PROCEDURES, AND PROPORTIONS OF CONCRETE MATERIALS SHALL INSURE CONCRETE WILL NOT BE ADVERSELY DISTURBED UPON CASING REMOVAL. DRILLING FLUID, IF USED, SHALL BE FULLY DISPLACED BY CONCRETE AND SHALL NOT BE DETRIMENTAL TO CONCRETE OR SURROUNDING SOIL. CONTAMINATED CONCRETE SHALL BE REMOVED FROM TOP OF FOUNDATION AND REPLACED WITH FRESH CONCRETE.
26. TOP OF FOUNDATION SHALL BE SLOPED TO DRAIN WITH A FLOATED FINISHED. EXPOSED EDGES OF CONCRETE SHALL BE CHAMFERED 3/4" X 3/4" (19 mm X 19 mm) MINIMUM.
27. FOR ANCHOR BLOCK TYPE FOUNDATIONS, FOR GUYED MASTS, ADDITIONAL CORROSION PROTECTION MAY BE REQUIRED FOR STEEL GUY ANCHORS IN DIRECT CONTACT WITH SOIL. DESIGN ASSUMES PERIODIC INSPECTIONS WILL BE PERFORMED OVER THE LIFE OF THE STRUCTURE TO DETERMINE IF ADDITIONAL ANCHOR CORROSION PROTECTION MEASURES SHALL BE IMPLEMENTED BASED ON OBSERVED SITE-SPECIFIC CONDITIONS.

FILE NO.

REVISIONS

REV	DESCRIPTION	DWN	CHK	APP
6	REVISED TO ANSI/TIA-222-G/H DATE: 1/28/2020	SWG	HA	HA



PO BOX 5999
PEORIA, IL 61601-5999
TOLL FREE 800-727-ROHN

THIS DRAWING IS THE PROPERTY OF ROHN. IT IS NOT TO BE REPRODUCED, COPIED OR TRACED IN WHOLE OR IN PART WITHOUT OUR WRITTEN CONSENT.

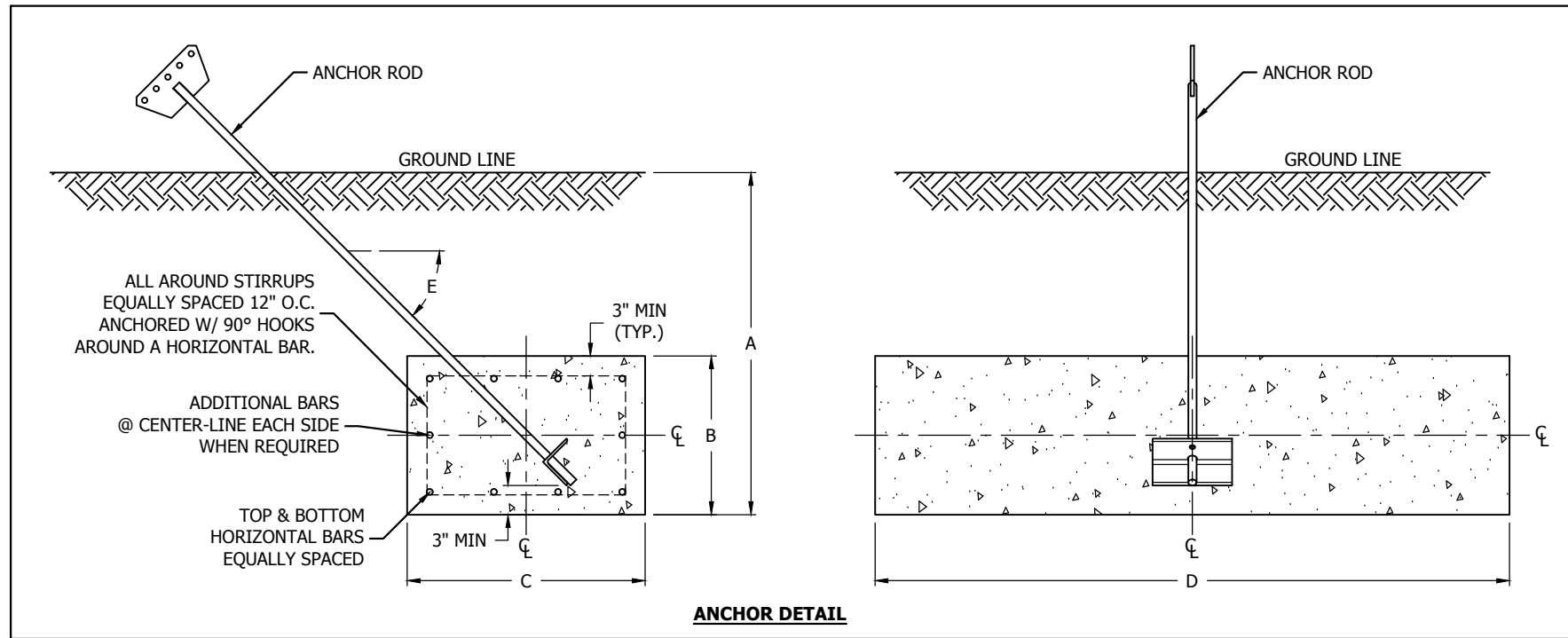
ANSI/TIA-222-G/H
STANDARD FOUNDATION DESIGN NOTES

DWN: FAD	CHK'D: HA	DATE: 11/20/2009
-------------	--------------	---------------------

ENGR: HA	SHEET #: 1 OF 1
-------------	--------------------

PRJ. ENGR:	PRJ. MANG'R:
------------	--------------

DRAWING NO: B090548	REV: 6
------------------------	-----------



ANCHOR DETAIL

CONCRETE ANCHOR BLOCK DATA FOR ANSI/TIA-222-G PRESUMPTIVE CLAY SOIL									
BLOCK	ANCHOR DIMENSIONS (IN.)				HORIZONTAL BARS QUANTITY & SIZE	STIRRUPS SIZE & SPACING	CONCRETE VOLUME (CU. YDS.)	UPLIFT CAPACITY (LBS)	LATERAL CAPACITY (LBS)
	A	B	C	D					
AB1	3'-0"	1'-0"	3'-0"	4'-0"	(8) #5 TOTAL (4) #5 TOP AND BOTTOM LAYERS (0) ADDITIONAL ON EACH SIDE	#3 @ 12" O.C.	0.44 PER BLOCK 1.3 TOTAL FOR 3	4,800	2,150
AB2	4'-0"	1'-6"	4'-0"	6'-0"	(10) #6 TOTAL (5) #6 TOP AND BOTTOM LAYERS (0) ADDITIONAL ON EACH SIDE	#3 @ 12" O.C.	1.33 PER BLOCK 4.0 TOTAL FOR 3	12,600	6,480
AB3	6'-0"	1'-6"	3'-0"	6'-0"	(8) #6 TOTAL (4) #6 TOP AND BOTTOM LAYERS (0) ADDITIONAL ON EACH SIDE	#3 @ 12" O.C.	1.0 PER BLOCK 3.0 TOTAL FOR 3	18,700	10,500
AB4	6'-0"	1'-6"	4'-0"	9'-0"	(10) #6 TOTAL (5) #6 TOP AND BOTTOM LAYERS (0) ADDITIONAL ON EACH SIDE	#4 @ 12" O.C.	2.0 PER BLOCK 6.0 TOTAL FOR 3	32,500	15,800
AB5	8'-0"	2'-0"	3'-0"	10'-0"	(10) #7 TOTAL (4) #7 TOP AND BOTTOM LAYERS (1) ADDITIONAL ON EACH SIDE	#4 @ 12" O.C.	2.22 PER BLOCK 6.7 TOTAL FOR 3	43,000	21,000
AB6	8'-0"	2'-0"	4'-0"	10'-0"	(12) #7 TOTAL (5) #7 TOP AND BOTTOM LAYERS (1) ADDITIONAL ON EACH SIDE	#4 @ 12" O.C.	2.96 PER BLOCK 8.9 TOTAL FOR 3	52,000	26,500
AB7	3'-0"	1'-0"	3'-0"	8'-0"	(8) #5 TOTAL (4) #5 TOP AND BOTTOM LAYERS (0) ADDITIONAL ON EACH SIDE	#3 @ 12" O.C.	0.89 PER BLOCK 2.7 TOTAL FOR 3	9,100	4,400
AB8	4'-0"	1'-6"	4'-0"	12'-0"	(10) #6 TOTAL (5) #6 TOP AND BOTTOM LAYERS (0) ADDITIONAL ON EACH SIDE	#3 @ 12" O.C.	2.67 PER BLOCK 8.0 TOTAL FOR 3	24,100	13,000
AB9	6'-0"	1'-6"	3'-0"	12'-0"	(12) #7 TOTAL (6) #7 TOP AND BOTTOM LAYERS (0) ADDITIONAL ON EACH SIDE	#4 @ 12" O.C.	2.0 PER BLOCK 6.0 TOTAL FOR 3	33,900	21,100
AB10	6'-0"	2'-0"	4'-0"	14'-6"	(16) #7 TOTAL (8) #7 TOP AND BOTTOM LAYERS (0) ADDITIONAL ON EACH SIDE	#4 @ 12" O.C.	4.30 PER BLOCK 12.9 TOTAL FOR 3	47,800	32,500
AB11	8'-0"	2'-0"	3'-0"	14'-6"	(16) #8 TOTAL (6) #8 TOP AND BOTTOM LAYERS (2) ADDITIONAL ON EACH SIDE	#4 @ 12" O.C.	3.24 PER BLOCK 9.72 TOTAL FOR 3	61,200	45,800
AB12	8'-0"	2'-6"	4'-0"	14'-6"	(22) #8 TOTAL (8) #8 TOP AND BOTTOM LAYERS (3) ADDITIONAL ON EACH SIDE	#5 @ 12" O.C.	5.37 PER BLOCK 16.11 TOTAL FOR 3	70,600	54,900

(SEE TOWER ASSEMBLY DRAWING FOR ANCHOR ROD SLOPE 'E')

GENERAL NOTES:

- SEE DRAWING NUMBER B090548 FOR STANDARD FOUNDATION NOTES.
- ALL HORIZONTAL BARS MUST BE CONTINUOUS.
- DUE TO VARIABLES INVOLVED DURING INSTALLATION, IT SHALL BE THE CUSTOMER'S OR INSTALLER'S RESPONSIBILITY TO PROVIDE STRUCTURALLY ADEQUATE SUPPORTS FOR BASE AND ANCHOR CONNECTIONS. IT MAY ALSO BE NECESSARY FOR THE CUSTOMER OR INSTALLER TO SECURE THE SERVICE OF A LOCAL ENGINEER TO DETERMINE THAT INSTALLATION COMPLIES WITH LOCAL BUILDING CODES.
- ADDITIONAL CORROSION PROTECTION MAY BE REQUIRED FOR STEEL GUY ANCHORS IN DIRECT CONTACT WITH SOIL.

FILE NO.	STDPUBLIC			
REVISIONS				
REV.	DESCRIPTION	DWN	CHK	APP
4	REDRAWN	JHY	HA	HA
DATE: 12/9/2013				

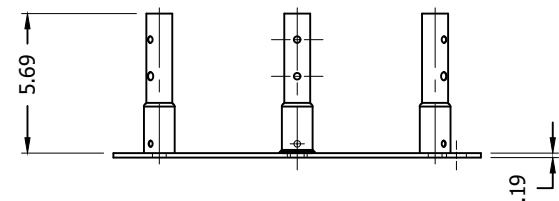
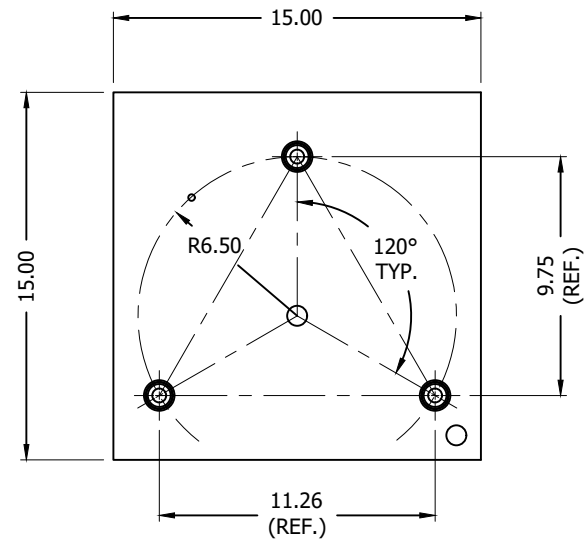


PO BOX 5999
PEORIA, IL 61601-5999
TOLL FREE 800-727-ROHN

THIS DRAWING IS THE PROPERTY OF ROHN. IT IS NOT TO BE REPRODUCED, COPIED OR TRACED IN WHOLE OR IN PART WITHOUT OUR WRITTEN CONSENT.

**ANCHOR BLOCK FOUNDATION
REV G PRESUMPTIVE CLAY**

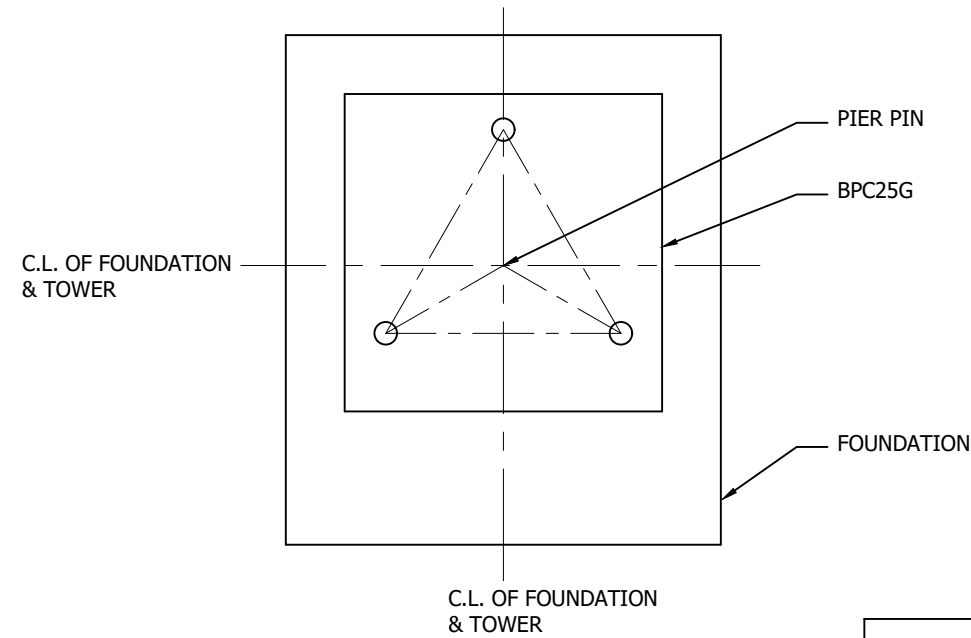
DWN:	FAD	CHK'D:	HA	DATE:	11/24/2009
ENGR:	HA	SHEET #:	1 OF 1		
PRJ. ENGR:	FAD	PRJ. MANG'R:			
DRAWING NO:	B090550			REV:	4



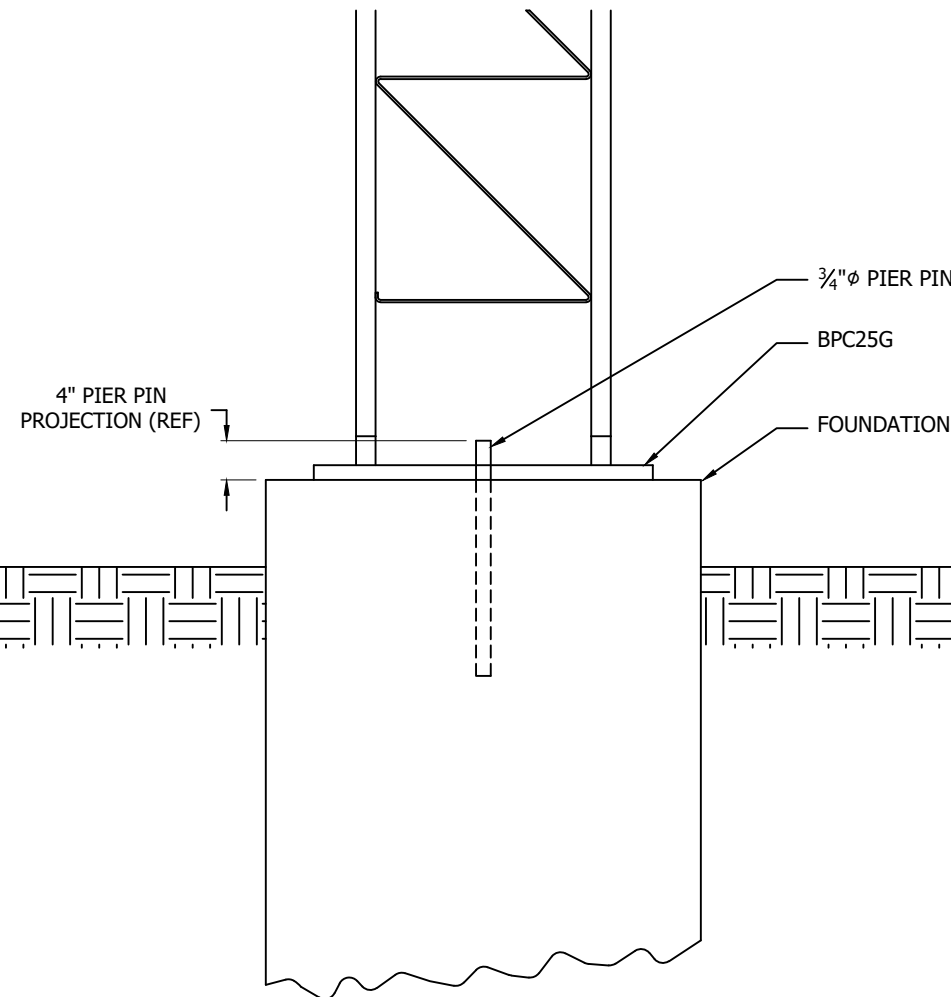
BASE PLATE FOR CONCRETE PIER
(PART NO. BPC25G)

NOTES:

1. DUE TO VARIABLES INVOLVED IN ROOF AND OTHER INSTALLATIONS, IT SHALL BE THE CUSTOMER'S OR INSTALLERS RESPONSIBILITY TO PROVIDE STRUCTURALLY ADEQUATE SUPPORTS FOR PIER & ANCHOR CONNECTIONS. IT MAY ALSO BE NECESSARY FOR THE CUSTOMER OR INSTALLER TO SECURE THE SERVICE OF A LOCAL ENGINEER TO DETERMINE THAT INSTALLATION COMPLIES WITH LOCAL BUILDING CODES.
2. FOR USE WITH GUYED AND BRACKETED TOWERS ONLY.



NOTE:
TOWER IS NOT TO STAND UNGUYED IN ANY CASE. TOWER MUST BE TEMPORARILY OR PERMANENTLY GUYED WITH STEEL GUYS AT ALL TIMES.



FILE NO.

REVISIONS				
REV.	DESCRIPTION	DWN	CHK	APP

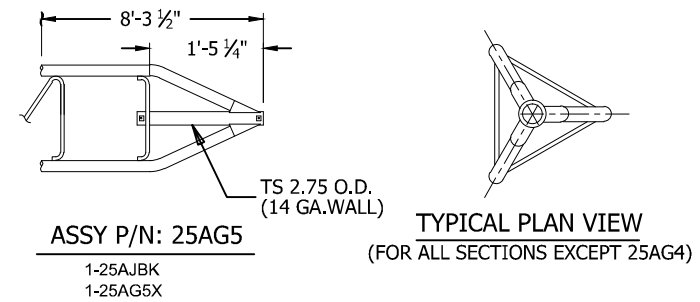
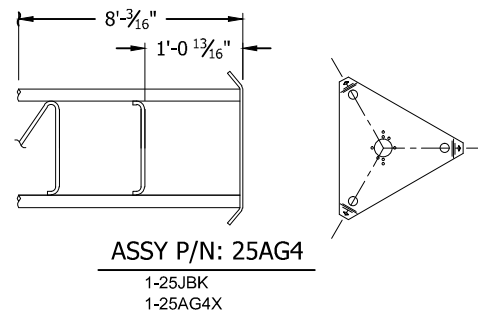
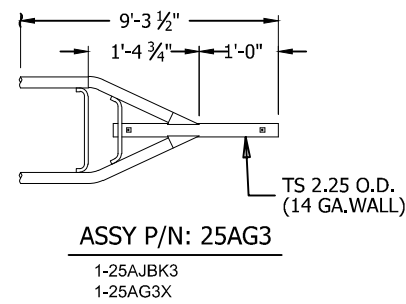
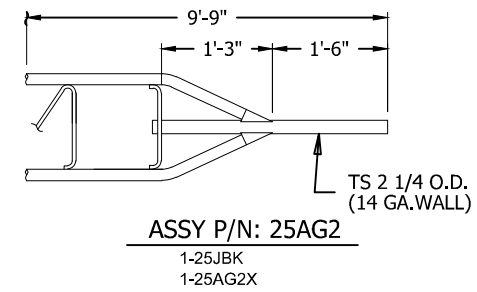
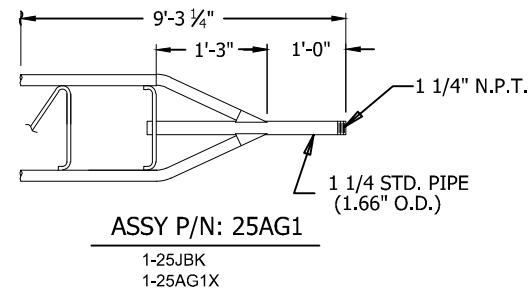
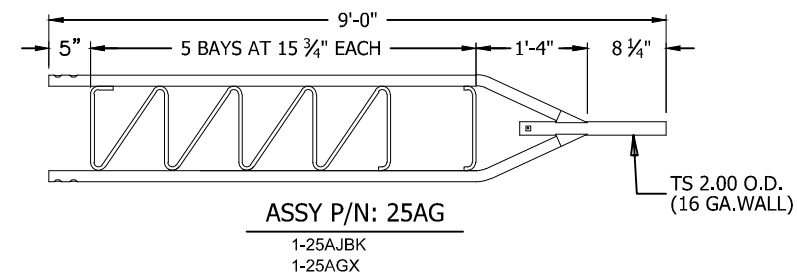


PO BOX 5999
PEORIA, IL 61601-5999
TOLL FREE 800-727-ROHN

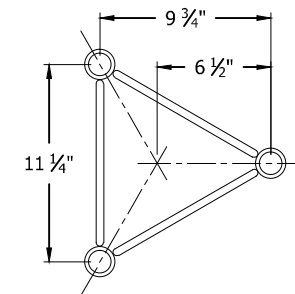
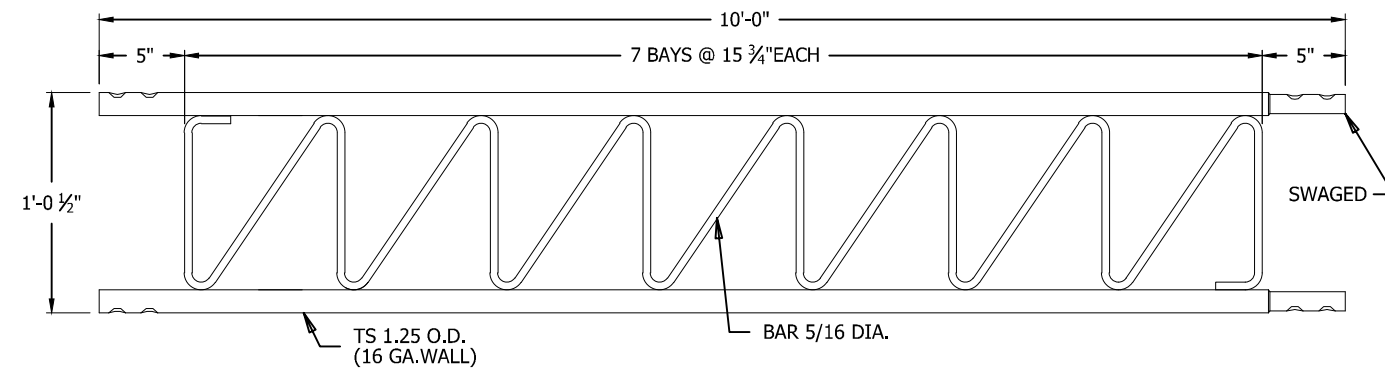
THIS DRAWING IS THE PROPERTY OF ROHN. IT IS NOT TO BE REPRODUCED, COPIED OR TRACED IN WHOLE OR IN PART WITHOUT OUR WRITTEN CONSENT.

25G BASE PLATE
FOUNDATION & ASSEMBLY DETAILS

DWN: MJH	CHK'D: KTL	DATE: 11/29/2016
ENG'R: DWG	SHEET #: 1 OF 1	
PRJ. ENG'R: DWG	PRJ. MANG'R:	
DRAWING NO: DWG-2297		REV: 0



NOTE: SPECIFICATIONS OF TOP SECTIONS ARE THE SAME AS SECTION NO.25G EXCEPT AS NOTED ABOVE.

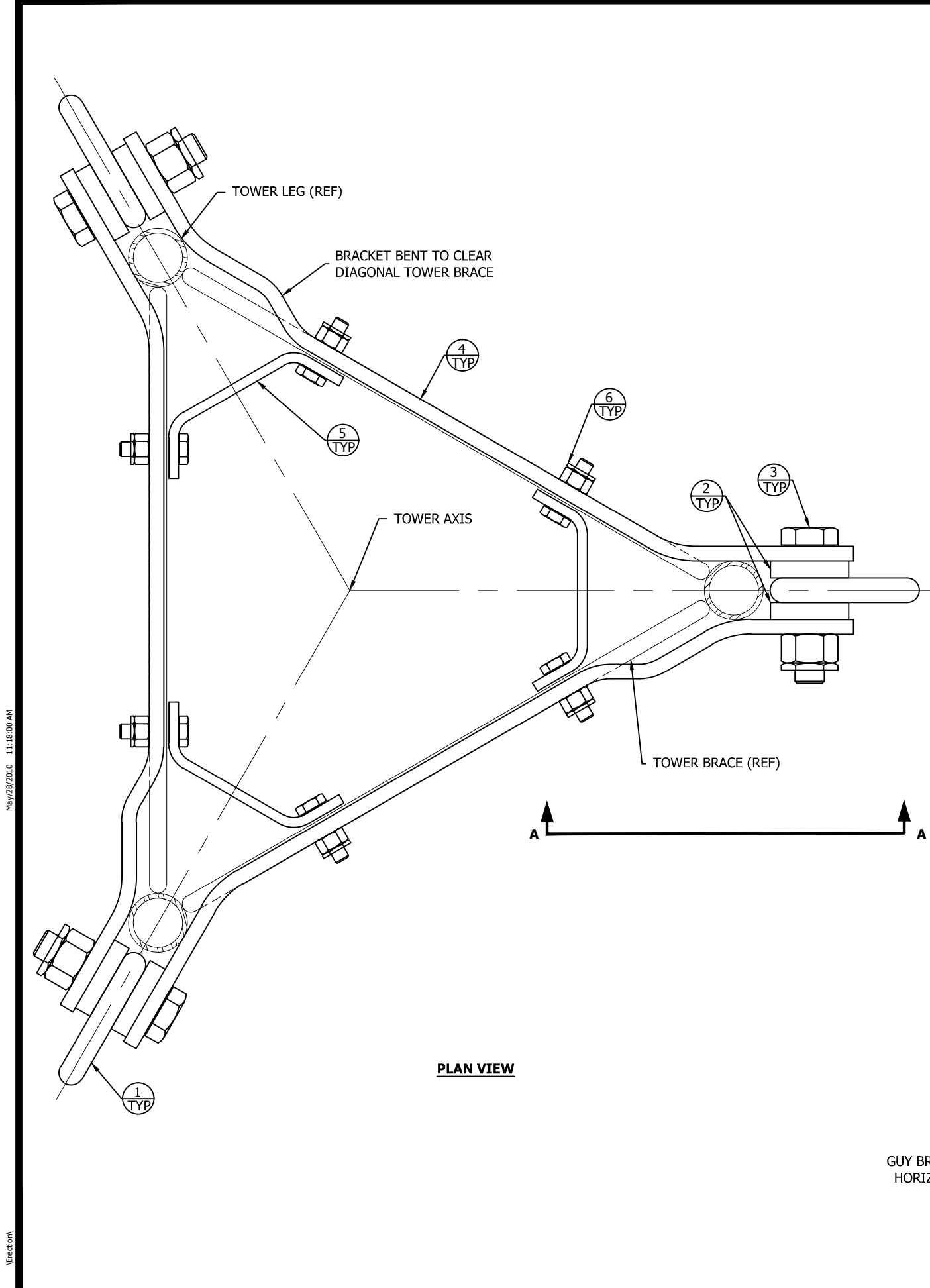


PO BOX 5999
PEORIA, IL 61601-5999
TOLL FREE 800-727-ROHN

THIS DRAWING IS THE PROPERTY OF ROHN. IT IS NOT TO BE REPRODUCED, COPIED OR TRACED IN WHOLE OR IN PART WITHOUT OUR WRITTEN CONSENT.

**SECTION ASSEMBLY
25G SECTIONS**

DWN: ZAW	CHK'D: JDM	DATE: 05/30/12
ENGR: HA	SHEET #: 1 OF 1	
PRJ. ENGR:	PRJ. MANG'R:	
DRAWING NO: DWG-0523	REV: 0	



25G GUY BRACKET ASSEMBLY GA25GD - BILL OF MATERIALS

ITEM	QTY	PART NO.	DESCRIPTION
1	3	GL1/2	LINK GB25D.5" DIAx1.75x3.38
2	6	KH386	RINGFILL PL .38X1.5" DIA .563"
3	3	210152GA	BOLT ASSY 1/2x3 HSB A325 HDG
4	3	GB25D	BRACKET GUY BAR FORM .25x1.50"
5	3	KC688	BAR FLAT BRACE 1.5X.19X4.72"
6	6	210005GA	BOLT ASSY 3/8 X 1-1/4 HCS G5 HDG
7	1	22208A	CARTON FOR GA25GD GUY ASSY

45G GUY BRACKET ASSEMBLY GA45GD - BILL OF MATERIALS

ITEM	QTY	PART NO.	DESCRIPTION
1	3	GL5/8	LINK GB45 & 55D .63"DIA X 4.5"
2	6	KH3423	RINGFILL PL .31X2" DIA .688"
3	3	210072GA	BOLT ASSY 5/8x3-1/4 HSB A325 HDG
4	3	GB45D	BRACKET GUY BAR FORM
5	3	KC192	BAR FLAT BRACE .25X1.5X6"
6	6	210008GA	BOLT ASSY 3/8 X 1-1/2 HCS G5 HDG
7	1	22209A	CARTON FOR GA45GD & GA55GD

55G GUY BRACKET ASSEMBLY GA55GD - BILL OF MATERIALS

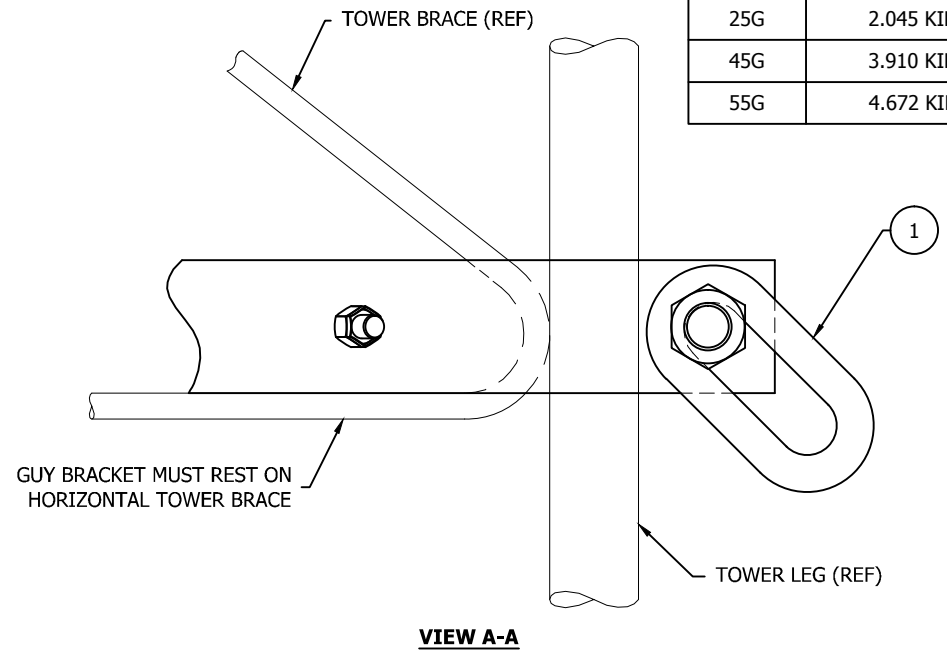
ITEM	QTY	PART NO.	DESCRIPTION
1	3	GL5/8	LINK GB45 & 55D .63"DIA X 4.5"
2	6	KH3424	RINGFILL PL .44x2.0" DIA .81"
3	3	210054GA	BOLT ASSY 3/4x3-1/2 HSB A325 HDG
4	3	GB55D	BRACKET GUY BAR FORM
5	3	KC192	BAR FLAT BRACE .25X1.5X6"
6	6	210008GA	BOLT ASSY 3/8 X 1-1/2 HCS G5 HDG
7	1	22209A	CARTON FOR GA45GD & GA55GD

THIMBLE DATA

GUY BRACKET P/N	MAXIMUM THIMBLE SIZE	MINIMUM THIMBLE SIZE
GA25GD	3/8 THH	1/4TH-5/16THH
GA45GD	9/16THH	1/4TH-5/16THH
GA55GD	9/16THH	1/4TH-5/16THH

SECTION	MAXIMUM REV 'F' VERTICAL PULL	MAXIMUM GUY WIRE SIZE
25G	1.90 KIPS	3/16" EHS
45G	3.40 KIPS	1/4" EHS
55G	3.94 KIPS	5/16" EHS

SECTION	MAXIMUM REV 'G' VERTICAL PULL	MAXIMUM GUY WIRE SIZE
25G	2.045 KIPS	3/16" EHS
45G	3.910 KIPS	1/4" EHS
55G	4.672 KIPS	5/16" EHS



FILE NO. Standard-45G

REVISIONS				
REV.	DESCRIPTION	DWN	CHK	APP
5	ADDED INTO AUTOCAD	JDA	JDM	H.A
6	DATE: Aug/16/2006 UPDATED TO REF 'F' DOWN PULL ADDED MAX GUY WIRE SIZE	ABS	JDM	HA
7	DATE: Dec/17/2008 UPDATED TO STANDARDS REVISED REV G VERTICAL PULL	ABS	JDM	HA
	DATE: May/27/2010			

DWG REFERENCE

SECTION	MAXIMUM REV 'F' VERTICAL PULL	MAXIMUM GUY WIRE SIZE
25G	1.90 KIPS	3/16" EHS
45G	3.40 KIPS	1/4" EHS
55G	3.94 KIPS	5/16" EHS

ROHN
PRODUCTS

6718 WEST PLANK ROAD
PEORIA, IL 61604
TOLL FREE 800-727-ROHN

THIS DRAWING IS THE PROPERTY OF ROHN. IT IS NOT TO BE REPRODUCED, COPIED OR TRACED IN WHOLE OR IN PART WITHOUT OUR WRITTEN CONSENT.

GUY BRACKET ASSY & HARDWARE
25, 45, 55 TOWERS

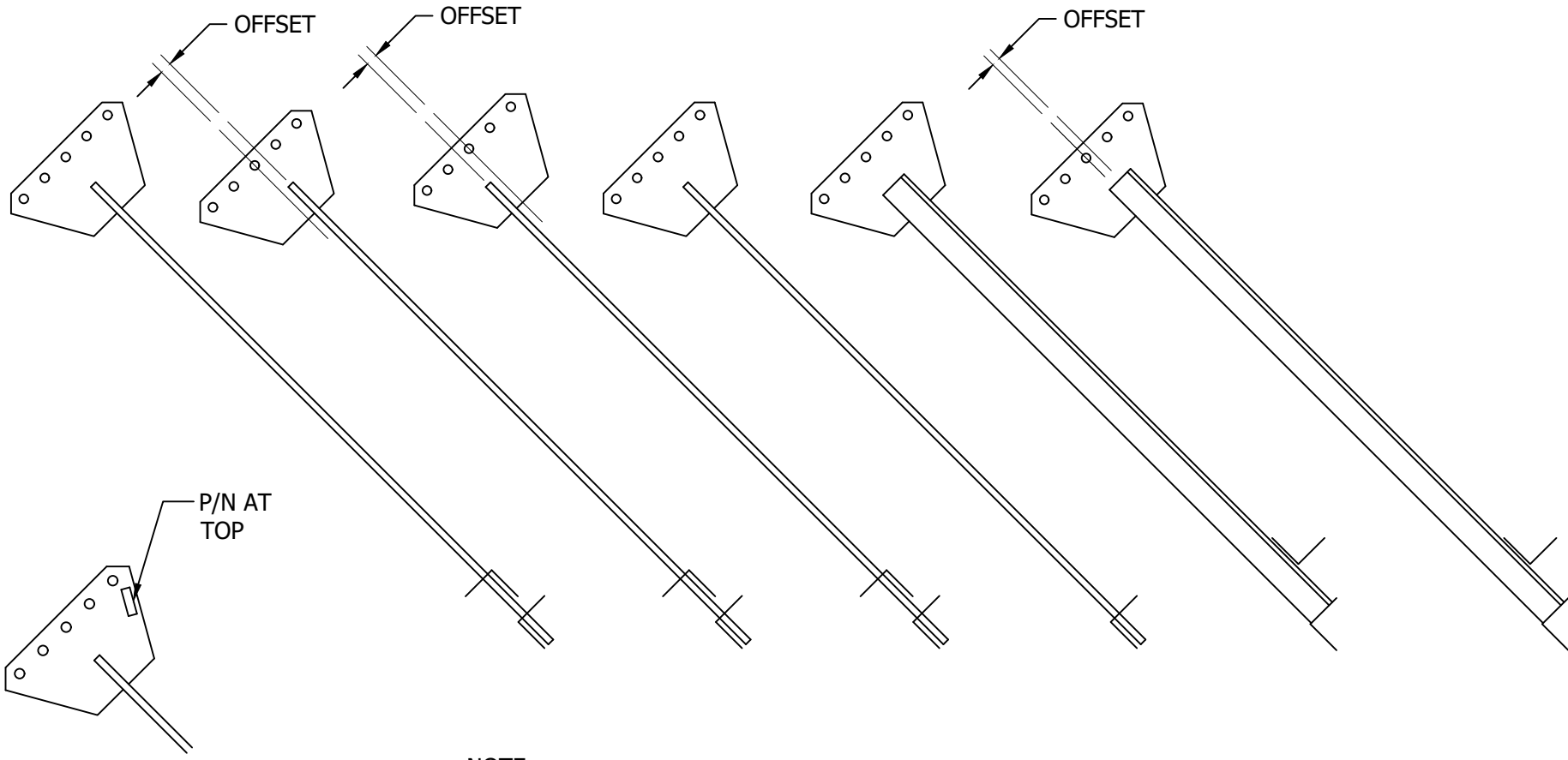
DWN: WDU	CHK'D: GPW	DATE: Apr/15/1988
ENGR: ROB		
DRAWING NO: C870710		REV: 7

May/28/2010 11:18:00 AM

Erection

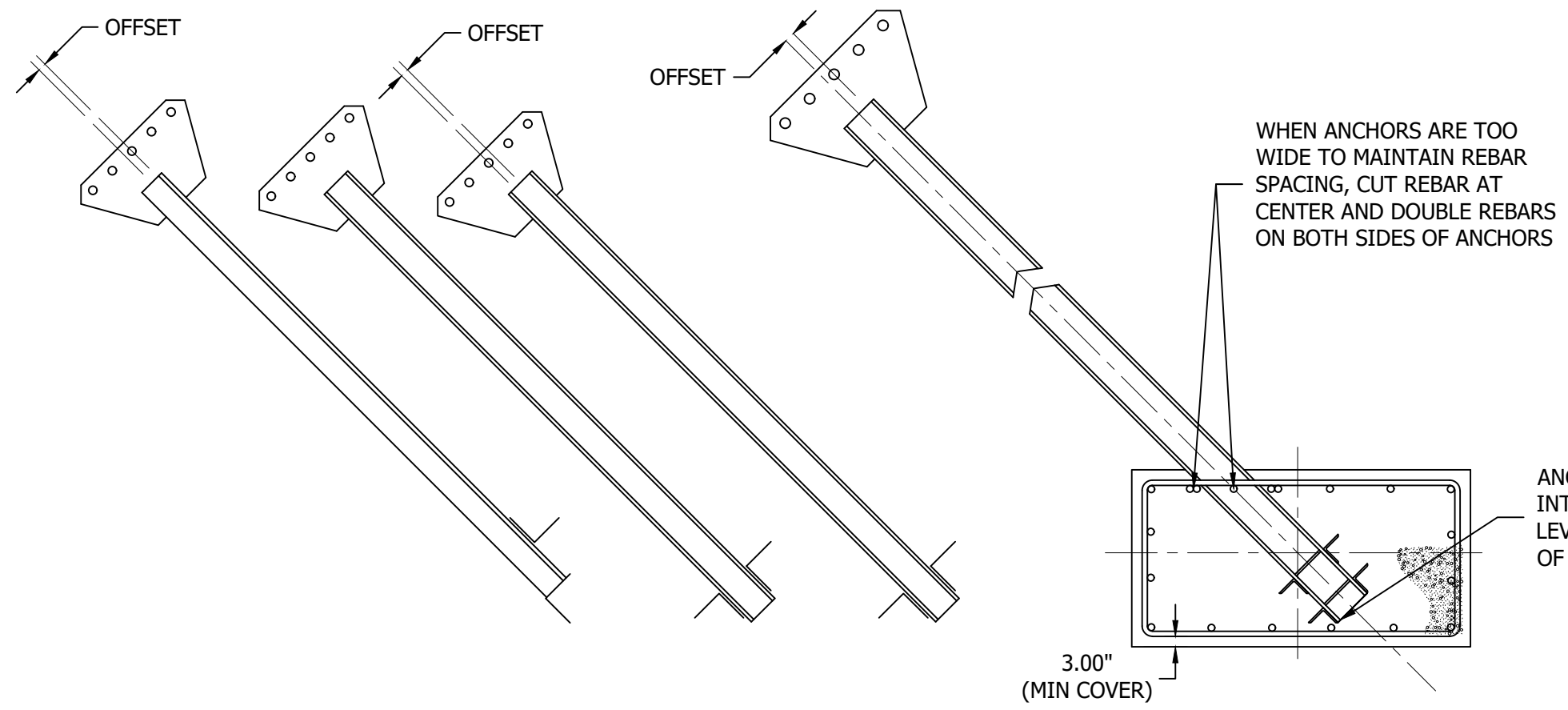
FILE NO. **Standard-80**

REVISIONS				
REV.	DESCRIPTION	DWN	CHK	APP
2	REDRAWN IN AUTOCAD DATE: Mar/22/2006	M.F	JDM	H.A
3	ADDED ANCHOR INSERTION NOTE TO BLOCK DETAIL DATE: Oct/15/2010	JWS	H.A	HA



TYPICAL DETAIL

NOTE:
INSTALL ANCHORS IN BLOCKS WITH EMBEDMENT
ANGLES ORIENTED AS SHOWN AND WITH P/N AT
TOP AS SHOWN.



DWG REFERENCE



6718 WEST PLANK ROAD
PEORIA, IL 61604
TOLL FREE 800-727-ROHN

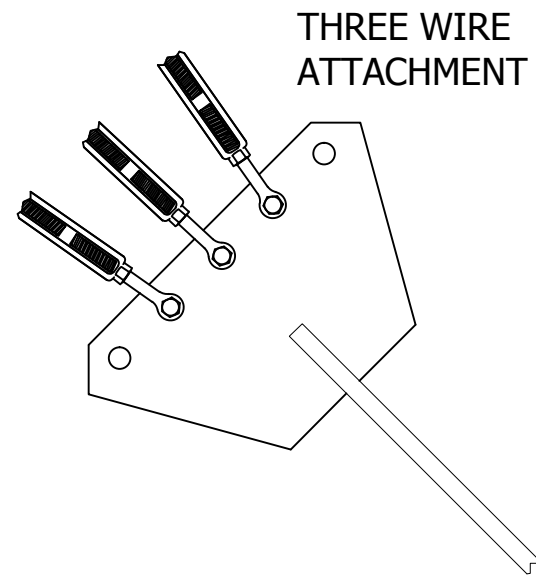
THIS DRAWING IS THE PROPERTY OF ROHN. IT IS NOT TO BE REPRODUCED, COPIED OR TRACED IN WHOLE OR IN PART WITHOUT OUR WRITTEN CONSENT.

ANCHOR INSTALLATION DETAIL

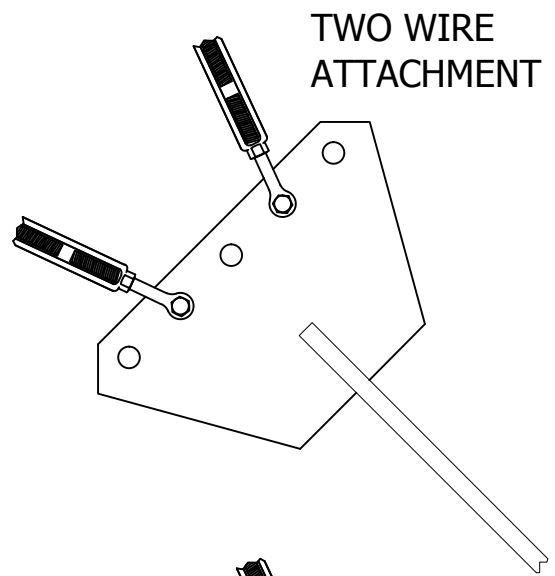
DWN: B_N	CHK'D: WDU	DATE: Mar/22/1995
ENGR: TWS		
DRAWING NO: A951409	REV: 3	

Oct/15/2010 11:34:30 AM

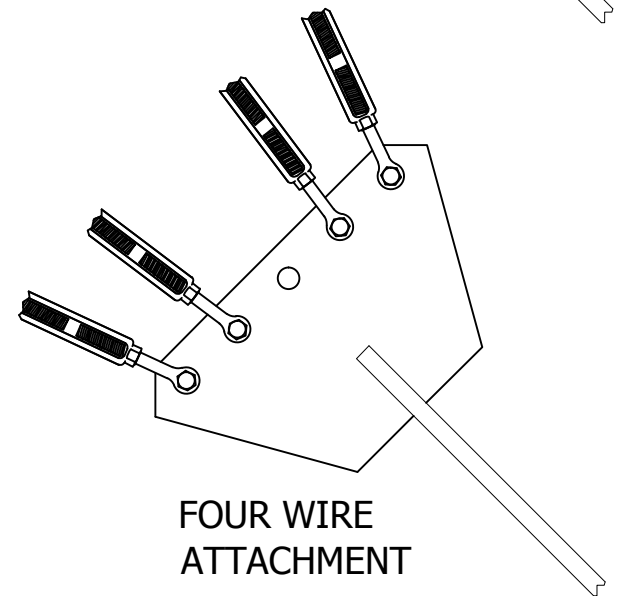
I:\Erection\



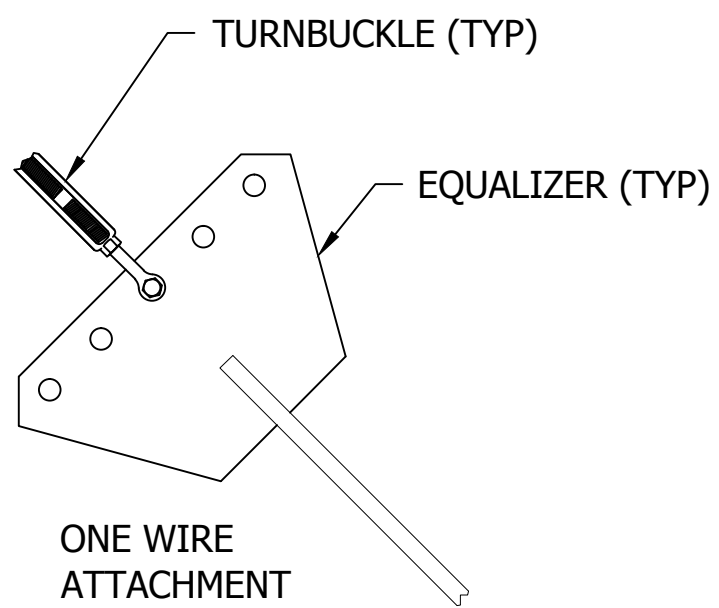
THREE WIRE ATTACHMENT



TWO WIRE ATTACHMENT



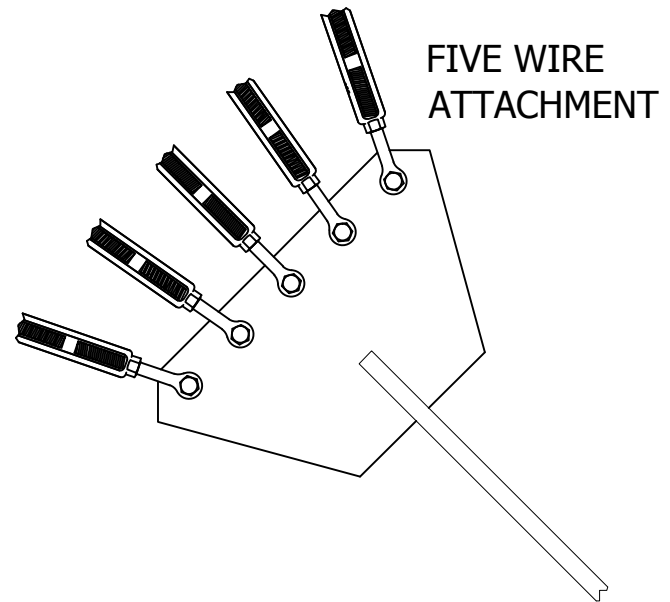
FOUR WIRE ATTACHMENT



ONE WIRE ATTACHMENT

TURNBUCKLE (TYP)

EQUALIZER (TYP)



FIVE WIRE ATTACHMENT

NOTE: SEE TOWER ASSEMBLY DRAWING FOR SIZE AND QTY OF TURNBUCKLES REQUIRED.

FILE NO. Standard-80

REVISIONS				
REV.	DESCRIPTION	DWN	CHK	APP
2	REDRAWN TO AUTOCAD	JDA	JDM	H.A
DATE: Jul/19/2006				

DWG REFERENCE

ROHN
PRODUCTS
6718 WEST PLANK ROAD
PEORIA, IL 61604
TOLL FREE 800-727-ROHN

THIS DRAWING IS THE PROPERTY OF ROHN. IT IS NOT TO BE REPRODUCED, COPIED OR TRACED IN WHOLE OR IN PART WITHOUT OUR WRITTEN CONSENT.

ANCHOR ATTACHMENT DETAIL

DWN: AJG	CHK'D: WDU	DATE: Jun/23/1982
-------------	---------------	----------------------

ENGR: RAM

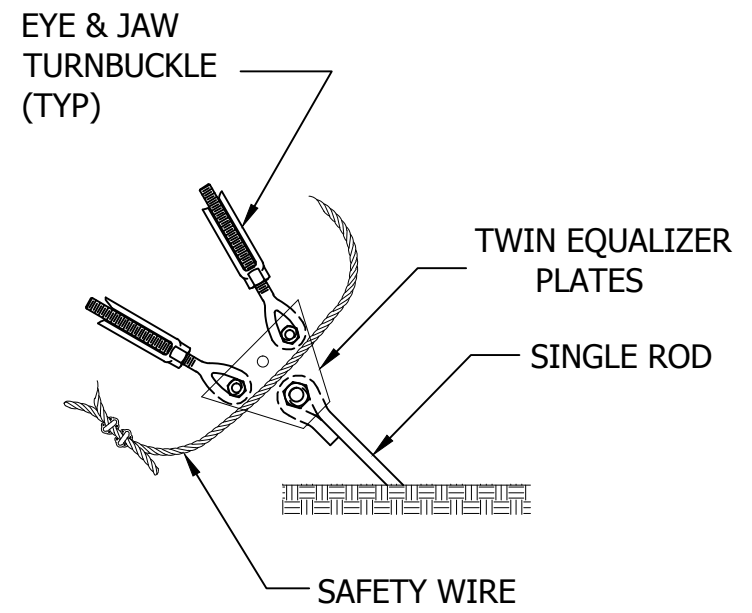
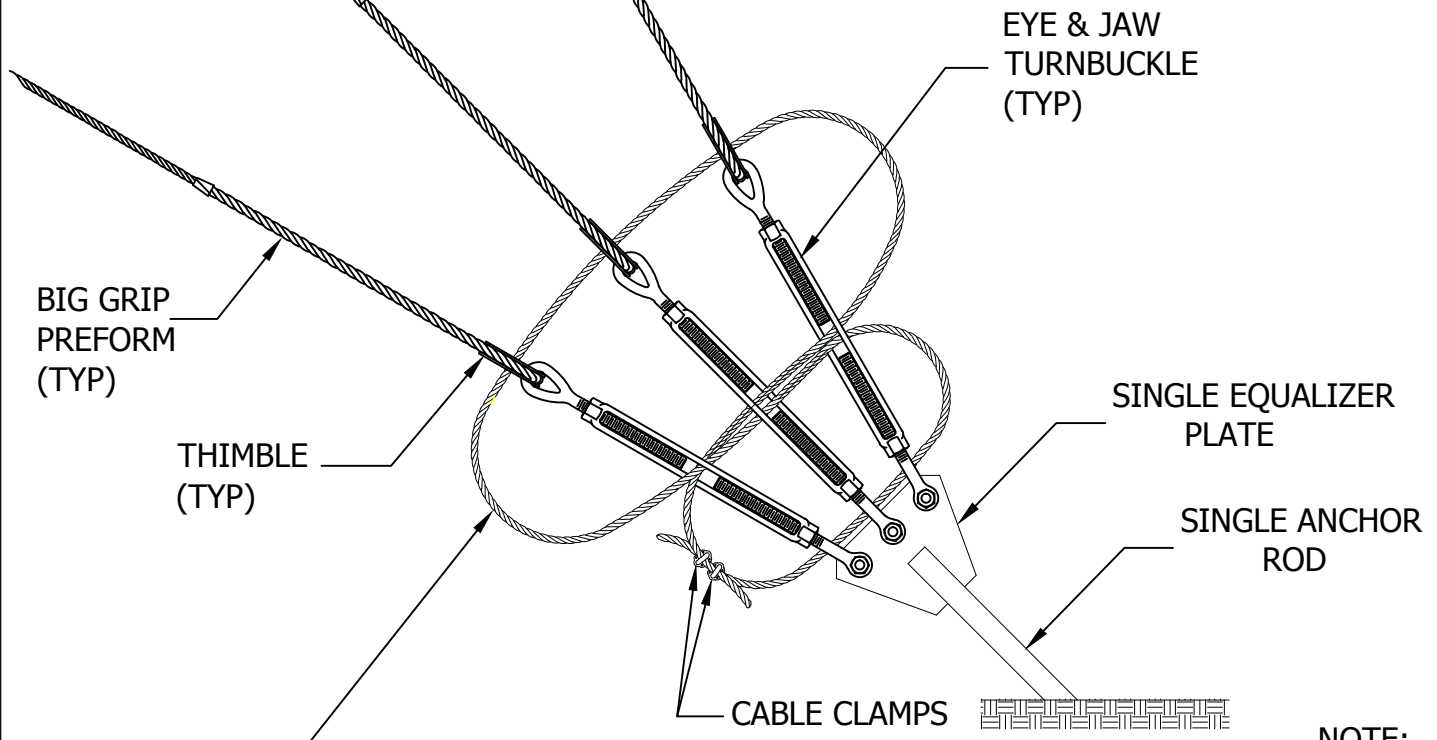
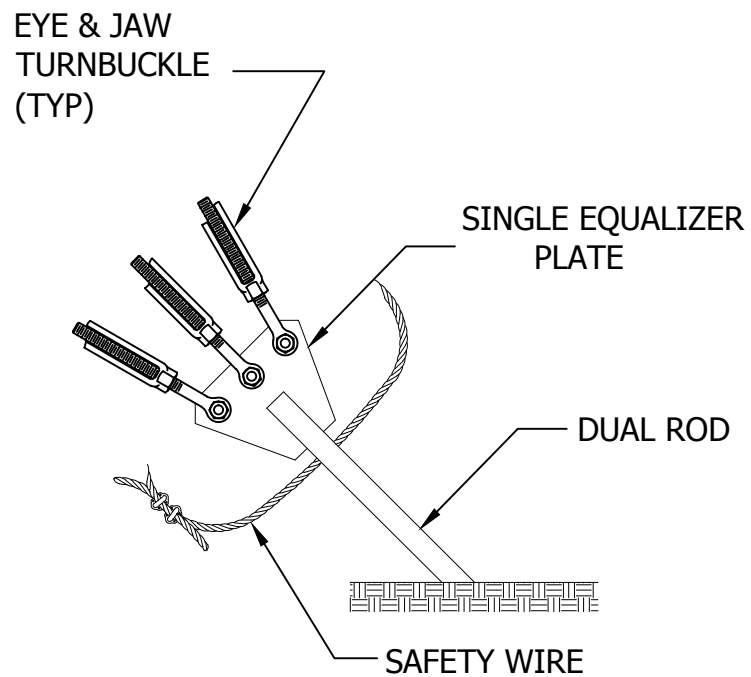
DRAWING NO: B820511	REV: 2
------------------------	-----------

Feb/06/2008 9:14:06 AM

\\erecton\


Apr/23/2008 9:57:30 AM

lirection\



1/4" EHS WIRE (UP TO 1" TURNBUCKLES)
 5/16" EHS WIRE (1-1/4" TURNBUCKLES & LARGER)


NOTE:
 1. DUE TO VARIABLES INVOLVED IN ROOF AND OTHER INSTALLATIONS, IT SHALL BE THE CUSTOMER'S OR INSTALLER'S RESPONSIBILITY TO PROVIDE STRUCTURALLY ADEQUATE SUPPORTS FOR PIER AND ANCHOR CONNECTIONS. IT MAY ALSO BE NECESSARY FOR THE CUSTOMER OR INSTALLER TO SECURE THE SERVICES OF A LOCAL ENGINEER TO DETERMINE THAT INSTALLATION COMPLIES WITH LOCAL BUILDING CODES.

FILE NO. Standard-80				
REVISIONS				
REV.	DESCRIPTION	DWN	CHK	APP
7	REDRAWN IN AUTOCAD DATE: Mar/17/2006	JDM	M.F	H.A
8	REMOVED NOTE #2 DATE: Apr/03/2006	JDM	M.F	HA
DWG REFERENCE				
 6718 WEST PLANK ROAD PEORIA, IL 61604 TOLL FREE 800-727-ROHN				
<small>THIS DRAWING IS THE PROPERTY OF ROHN. IT IS NOT TO BE REPRODUCED, COPIED OR TRACED IN WHOLE OR IN PART WITHOUT OUR WRITTEN CONSENT.</small>				
TURNBUCKLE SAFETY METHOD				
DWN:	KTL	CHK'D:	O.H	DATE:
ENGR:	TWS			Mar/04/1968
DRAWING NO:	B680324			REV:
				8

Sep17/2007 2:04:24 PM

Erection\

WIRE SIZE	ANCHOR ROD	TURNBUCKLE	THIMBLE
3/16 EHS	GAR30	5/8TBE&J	5/16THH
	GAC303,305	3/8TBE&E	5/16THH
	GAC3455	1/2TBE&J	5/16THH
	GAC5655	5/8TBE&J	5/16THH
1/4 EHS	GAR30	5/8TBE&J	3/8THH
	GAC303,305	1/2TBE&E	3/8THH
	GAC3455	1/2TBE&J	3/8THH
	GAC5655	5/8TBE&J	3/8THH
5/16 EHS	GAR30	5/8TBE&J	7/16THH
	GAC303,305	5/8TBE&J	7/16THH
	GAC3455	5/8TBE&J	7/16THH
	GAC5655	5/8TBE&J	7/16THH
3/8 EHS	GAR30	5/8TBE&J	1/2THH
	GAC3455	5/8TBE&J	1/2THH
	GAC5655	5/8TBE&J	1/2THH

FILE NO. Standard-90				
REVISIONS				
REV.	DESCRIPTION	DWN	CHK	APP
3	REDRAWN INTO AUTOCAD DATE: Apr/04/2006	M.F	JDM	HA
4	REMOVED NOTATION DATE: Sep/13/2007	J.K	JDM	HA
DWG REFERENCE				
 <p>6718 WEST PLANK ROAD PEORIA, IL 61604 TOLL FREE 800-727-ROHN</p>				
<small>THIS DRAWING IS THE PROPERTY OF ROHN. IT IS NOT TO BE REPRODUCED, COPIED OR TRACED IN WHOLE OR IN PART WITHOUT OUR WRITTEN CONSENT.</small>				
<p align="center">GUY WIRE HARDWARE KIT</p>				
DWN:	CHK'D:	DATE:		
WHW	W.M	Sep/30/1987		
ENGR:				
RDM				
DRAWING NO:				REV:
A871382				4

FILE NO. Standard-80				
REVISIONS				
REV.	DESCRIPTION	DWN	CHK	APP
3	REDRAWN IN AUTOCAD	JDM	M.F	H.A
DATE: Mar/17/2006				

DWG REFERENCE	

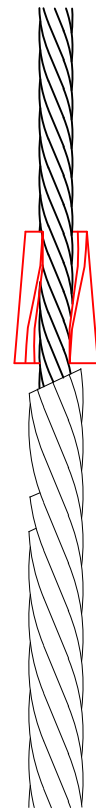
ROHN
PRODUCTS

6718 WEST PLANK ROAD
PEORIA, IL 61604
TOLL FREE 800-727-ROHN

THIS DRAWING IS THE PROPERTY OF ROHN. IT IS NOT TO BE REPRODUCED, COPIED OR TRACED IN WHOLE OR IN PART WITHOUT OUR WRITTEN CONSENT.

SPLICE CONNECTION FOR BIG GRIP & END SLEEVE		
DWN: H.A	CHK'D: RAM	DATE: Jun/09/1970
ENGR: TWS		
DRAWING NO: B700607	REV: 3	

TO ACHIEVE MAXIMUM COVERAGE WITH THE END SLEEVE, THE APPLICATION SHOULD BE CONDUCTED IN THE FOLLOWING MANNER



1

PLACE THE SLOT SIDE OF THE END SLEEVE OVER THE LONG LEG OF THE DEAD END



2

DRIVE THE SLEEVE DOWNWARD UNTIL THE RODS OF THE SHORT LEG ARE COMPLETELY COVERED



3

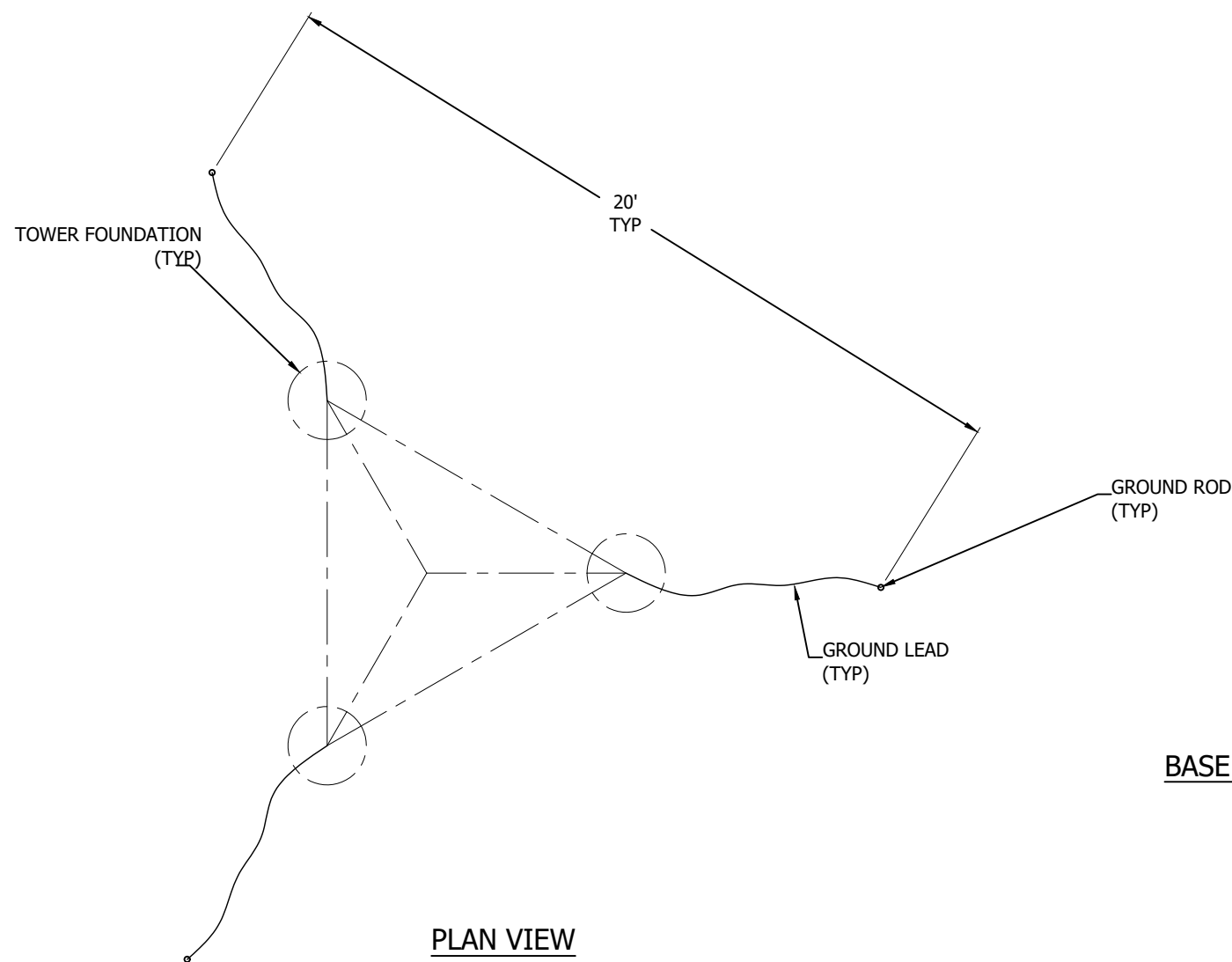
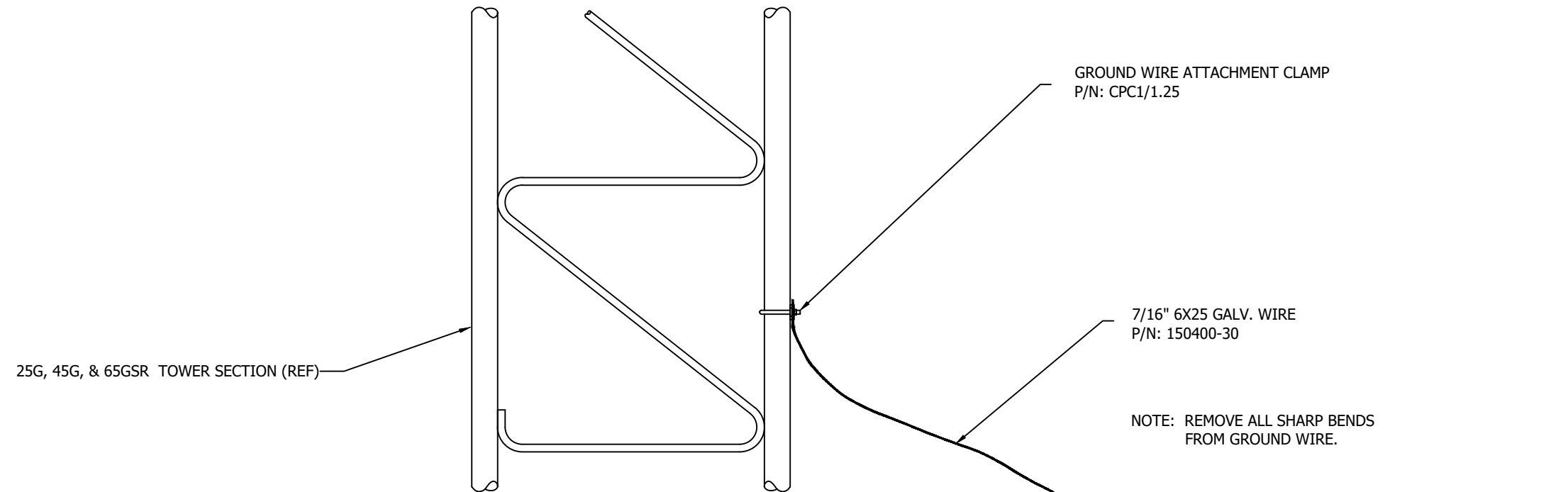
THE RODS OF THE LONG LEG SHOULD BE EVEN WITH, OR MAY EXTEND ABOVE, THE TOP EDGE OF THE SLEEVE

BE SURE TO SELECT THE PROPER SIZE END SLEEVE

FILE NO.

REVISIONS

REV	DESCRIPTION	DWN	CHK	APP
3	ADDED 65GSR FOR GROUND KIT DATE: 08/20/12	ZAW	JDM	HA



BASE GROUNDING BGK3GGX
(3-REQ'D)



PO BOX 5999
PEORIA, IL 61601-5999
TOLL FREE 800-727-ROHN

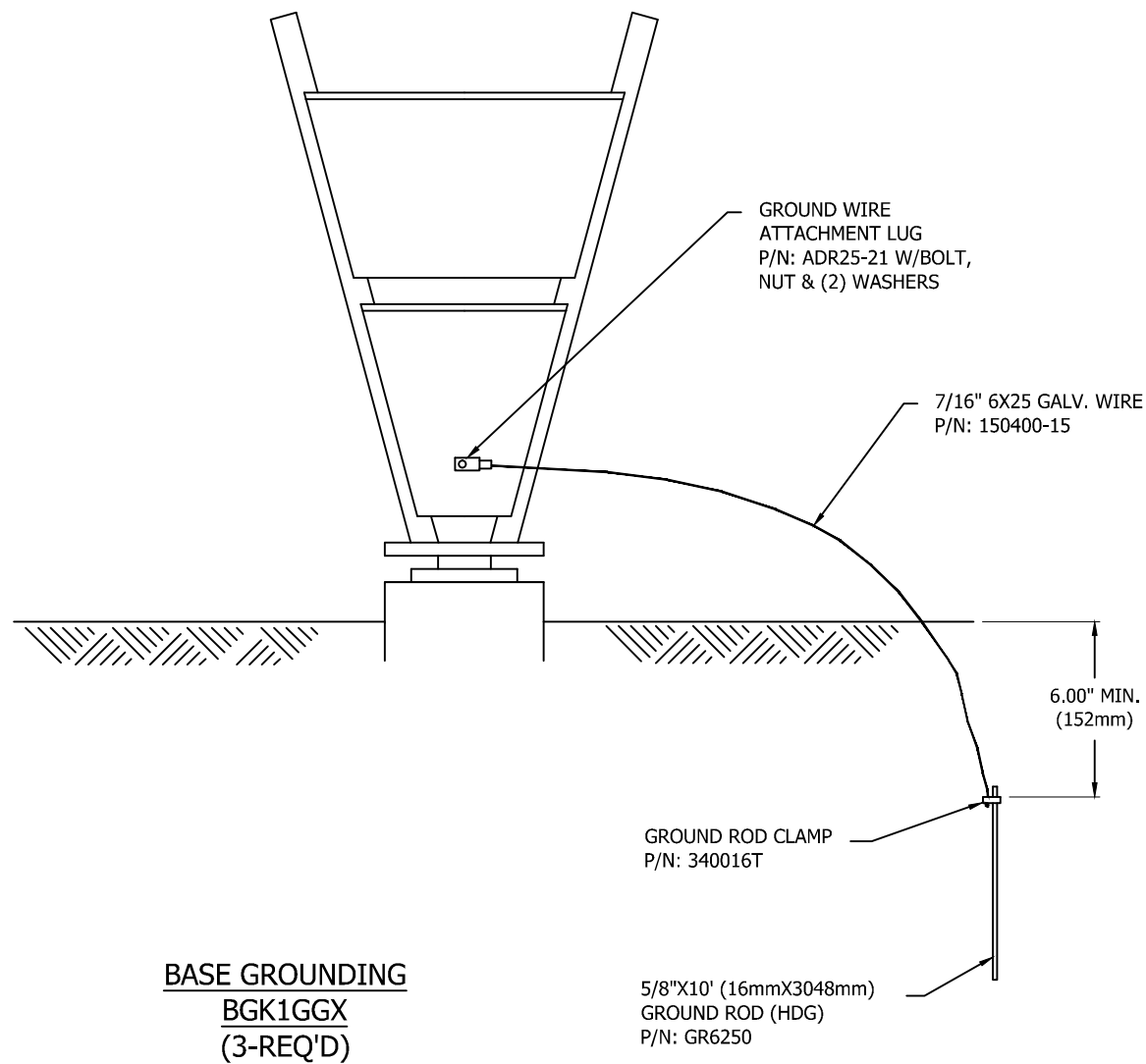
THIS DRAWING IS THE PROPERTY OF ROHN. IT IS NOT TO BE REPRODUCED, COPIED OR TRACED IN WHOLE OR IN PART WITHOUT OUR WRITTEN CONSENT.

KIT BASE GRD 25, 45, & 65GSR TOWER

DWN: CHW	CHK'D: JDM	DATE: FEB/2/2009
-------------	---------------	---------------------

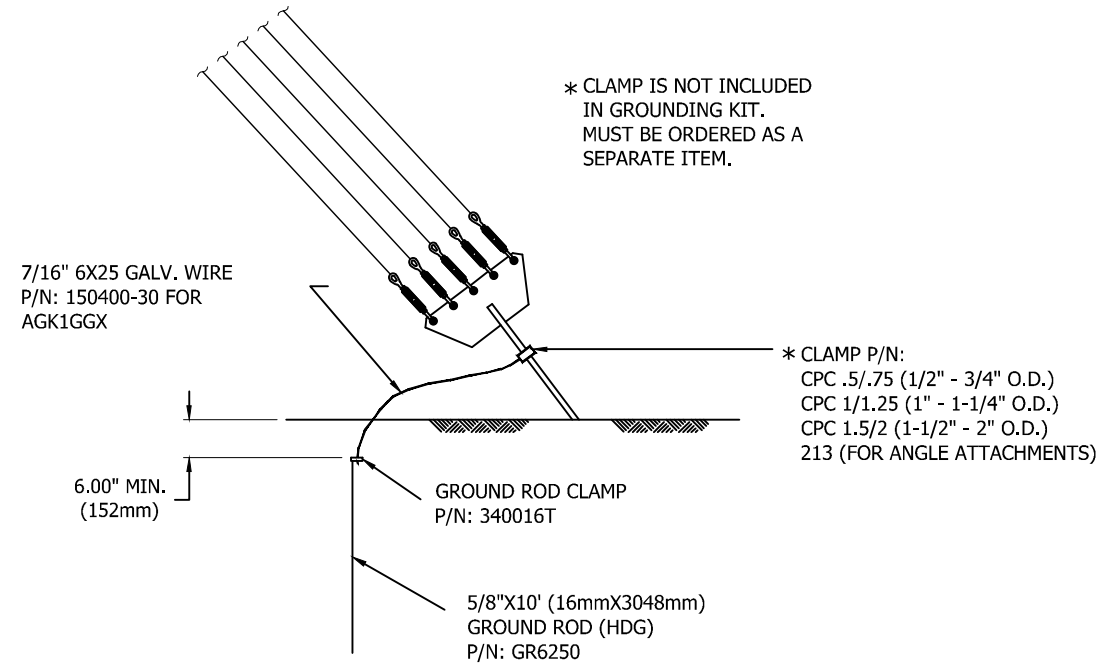
ENG'R: HA	SHEET #: 1 OF 1
--------------	--------------------

DRAWING NO: B090128	REV: 3
------------------------	-----------




BASE GROUNDING
BGK1GGX
(3-REQ'D)

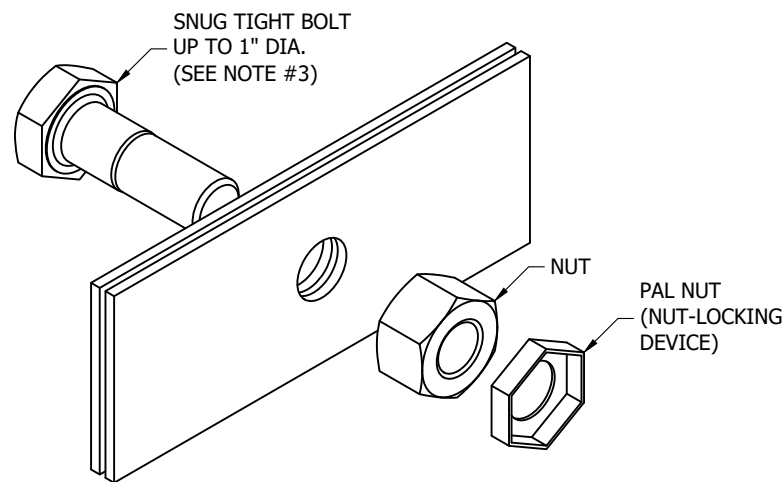
NOTE: REMOVE ALL SHARP BENDS FROM GROUND WIRE.



GUY WIRE GROUNDING - AGK1GGX
(1-REQ'D PER ANCHOR RADIUS)

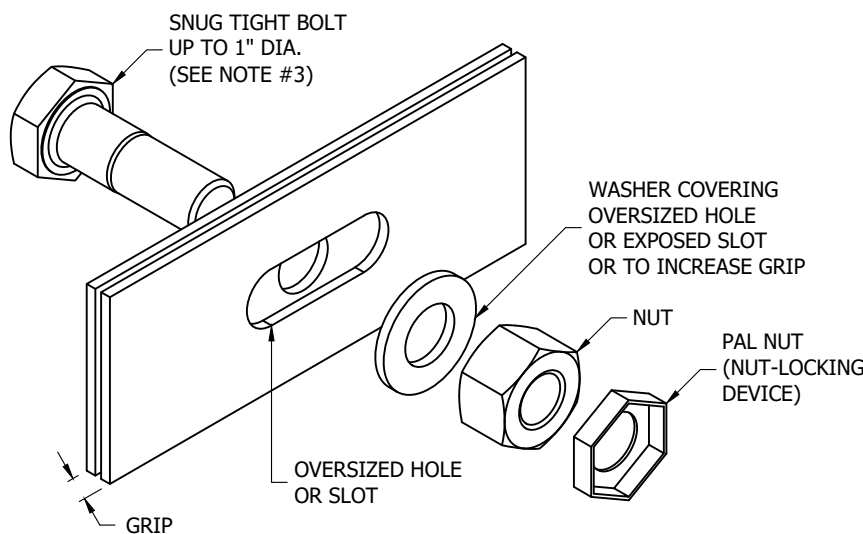
APPLICATION
80 & 90 TAPERED BASES

FILE NO.				
REVISIONS				
REV.	DESCRIPTION	DWN	CHK	APP
3	UPDATE BOM AND STANDARDS DATE: 8/17/11	JEC	KTL	HA
 PO BOX 5999 PEORIA, IL 61601-5999 TOLL FREE 800-727-ROHN				
<small>THIS DRAWING IS THE PROPERTY OF ROHN. IT IS NOT TO BE REPRODUCED, COPIED OR TRACED IN WHOLE OR IN PART WITHOUT OUR WRITTEN CONSENT.</small>				
REV. G G80 & 90 TOWERS				
DWN:	CHK'D:	DATE:		
JK	JDM	DEC/27/2007		
ENG'R:	SHEET #:		REV:	
DWG	1 OF 1		3	
DRAWING NO:				REV:
B070996				3



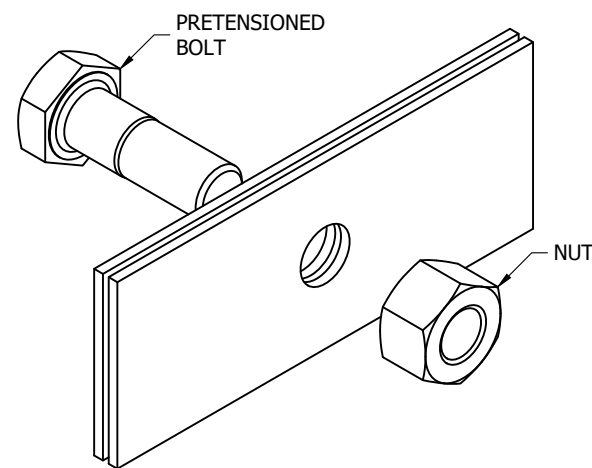
BOLT ASSEMBLY SUFFIX "GA"
(SNUG TIGHT BOLT, NUT, & PAL NUT)

REFER TO SHEET 2 FOR
NUT-LOCKING DEVICE OPTIONS



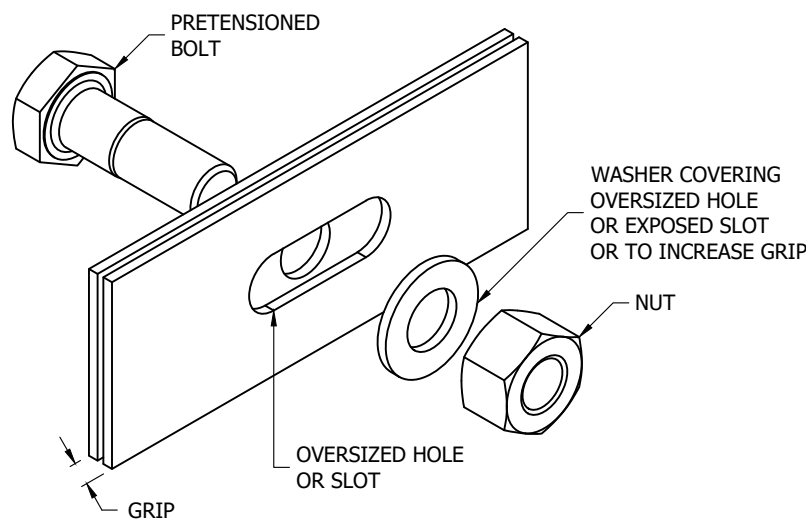
BOLT ASSEMBLY SUFFIX "GAW"
SLOT ON ONE SIDE OR NARROW GRIP
(SNUG TIGHT BOLT, WASHER, NUT, & PAL NUT)

**SNUG TIGHT BOLT
PAL NUT**



BOLT ASSEMBLY SUFFIX "GPT1"
(PRETENSIONED BOLT & NUT)

SHORTAGES OF NUT-LOCKING
DEVICES MAY OCCUR IF USED
ON PRETENSIONED BOLT
ASSEMBLIES.



BOLT ASSEMBLY SUFFIX "GPT"
SLOT ON ONE SIDE OR NARROW GRIP
(PRETENSIONED BOLT, WASHER, & NUT)

PRETENSIONED BOLT

ROHN STANDARD BOLT ASSEMBLIES

1. ALL BOLTED CONNECTIONS ARE SNUG TIGHT CONNECTIONS UNLESS PRESTRESSED BOLTS ARE INDICATED ON AN ASSEMBLY DRAWING.
2. ROHN STANDARD BOLT ASSEMBLIES ARE ILLUSTRATED ON THE ADJACENT INSTALLATION DETAILS. WHEN SPECIFIED BY THE PURCHASER, OPTIONAL NUT-LOCKING DEVICES (TRI-LOC NUTS, ANCO NUTS, OR LOCK WASHERS) ARE PROVIDED AS A SUBSTITUTE FOR PAL NUTS FOR SNUG TIGHT CONNECTIONS (REFER TO SHEET 2 FOR INSTALLATION DETAILS).
3. TRI-LOC NUTS ARE PROVIDED AS STANDARD NUT-LOCKING DEVICES FOR SNUG TIGHT BOLTS GREATER THAN 1 INCH DIAMETER. ANCO NUTS ARE SUBSTITUTED FOR TRI-LOC NUTS WHEN SPECIFIED BY THE PURCHASER.
4. **PRETENSIONED BOLTS ARE PROVIDED AS AN ASSEMBLY INCLUDING THE BOLT, NUT AND REQUIRED WASHERS AND ARE TO BE USED, UNLESS OTHERWISE NOTED, FOR ALL DOUBLE ANGLE CONNECTIONS AND OTHER CONNECTIONS NOTED ON AN ASSEMBLY DRAWING. A NUT-LOCKING DEVICE IS NOT REQUIRED OR PROVIDED FOR PRETENSIONED BOLT ASSEMBLIES.**

WASHERS

5. WASHERS ARE PROVIDED TO COVER ALL OVERSIZED HOLES AND EXPOSED SLOTS. WHEN AN OVERSIZED HOLE OR EXPOSED SLOT IS PRESENT ON BOTH SIDES OF A CONNECTION, A WASHER IS REQUIRED UNDER THE BOLT HEAD AND THE NUT AND THE BOLT ASSEMBLY SUFFIX IN THE ASSEMBLY DRAWING BOM WILL INCLUDE AN ADDITIONAL "W".
6. WASHERS ARE ALSO PROVIDED TO INCREASE THE GRIP THICKNESS WHEN REQUIRED TO PREVENT THE NUT FROM BOTTOMING OUT ON THE BOLT THREADS.
7. **FOR SLOTTED GUSSET PLATE CONNECTIONS, WASHERS ARE ONLY REQUIRED FOR SINGLE ANGLE MEMBERS (SLOT EXPOSED ON ONE SIDE). WASHERS ARE NOT REQUIRED OR PROVIDED FOR DOUBLE ANGLE CONNECTIONS (SLOT IS NOT EXPOSED).**

SNUG TIGHT BOLT ASSEMBLY INSTALLATION

8. UNLESS OTHERWISE NOTED, BOLT ASSEMBLIES ARE TO BE TIGHTENED TO A SNUG TIGHT CONDITION (MEMBERS IN FIRM CONTACT USING AN ORDINARY WRENCH OR IMPACT WRENCH) AND SHALL INCLUDE A NUT-LOCKING DEVICE.
9. NO MINIMUM BOLT TENSIONS OR TORQUE VALUES ARE REQUIRED.
10. AFTER NUTS ARE TIGHT, PAL NUTS ARE TO BE INSTALLED WITH THE EDGE LIP OUT (SEE ADJACENT INSTALLATION DETAILS).
11. WHEN LOCK WASHERS ARE SUBSTITUTED FOR PAL NUTS, REPLACE ANY DAMAGED LOCK WASHERS DUE TO OVERTIGHTENING.

PRETENSIONED BOLT ASSEMBLY INSTALLATION

12. PRETENSIONED BOLT ASSEMBLIES, UNLESS OTHERWISE NOTED, SHALL BE TIGHTENED IN ACCORDANCE WITH THE AISC TURN-OF-NUT PRETENSIONING METHOD USING THE FOLLOWING NUT ROTATIONS FROM THE SNUG TIGHT CONDITION: 1/3 TURN FOR BOLT LENGTHS UP TO 4 TIMES THEIR DIAMETER AND 1/2 TURN FOR LONGER BOLTS.
13. LOCK WASHERS SHALL NOT BE USED WITH PRETENSIONED BOLT ASSEMBLIES.

FILE NO.

REVISIONS				
REV	DESCRIPTION	DWN	CHK	APP
9	ADDED BOLT ASSEMBLY VIEWS	JHY	JDM	HA
DATE: 11/11/2019				

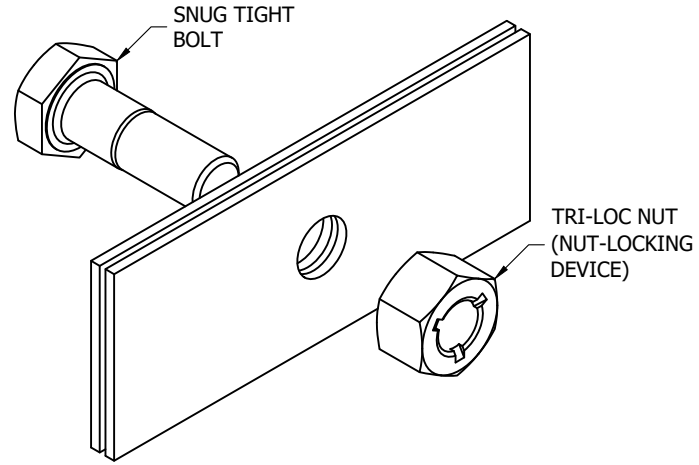


PO BOX 5999
PEORIA, IL 61601-5999
TOLL FREE 800-727-ROHN

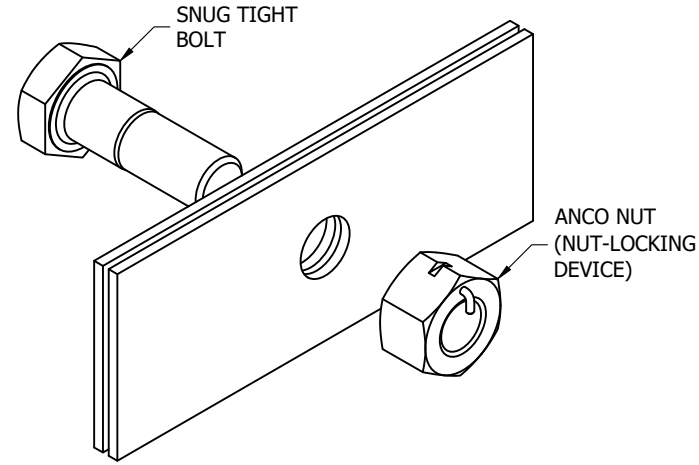
THIS DRAWING IS THE PROPERTY OF ROHN. IT IS NOT TO BE REPRODUCED, COPIED OR TRACED IN WHOLE OR IN PART WITHOUT OUR WRITTEN CONSENT.

ROHN STANDARD
BOLT ASSEMBLY INSTALLATIONS

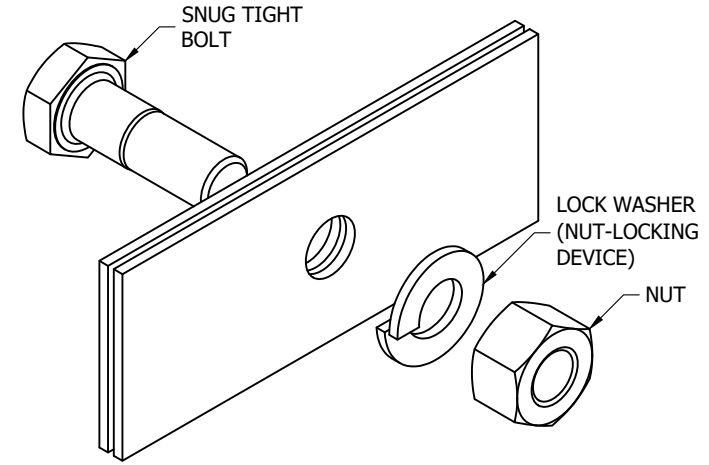
DWN:	OH	CHK'D:	GHB	DATE:	07/05/1979
ENGR:	TWS	SHEET #:		1 OF 2	
PRJ. ENGR:		PRJ. MANG'R:			
DRAWING NO:				REV:	
A790135				9	



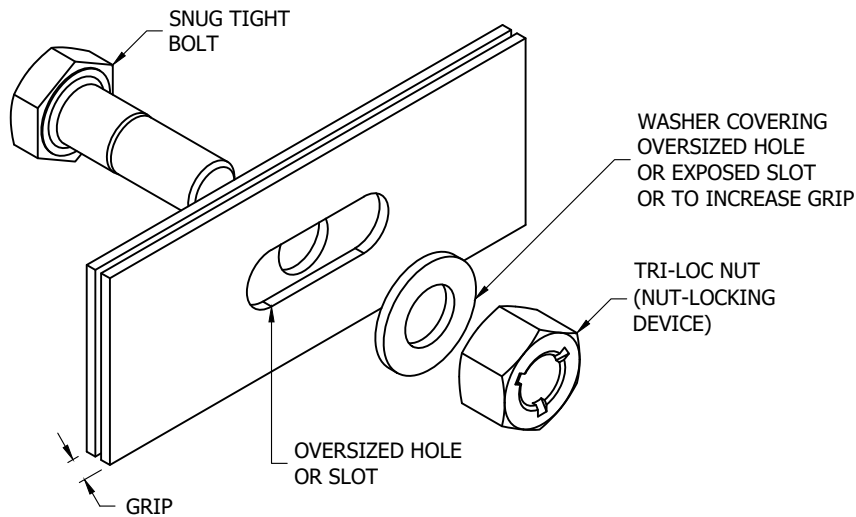
BOLT ASSEMBLY SUFFIX "GA-TLN"
(SNUG TIGHT BOLT & TRI-LOC NUT)



BOLT ASSEMBLY SUFFIX "GAAN"
(SNUG TIGHT BOLT & ANCO NUT)

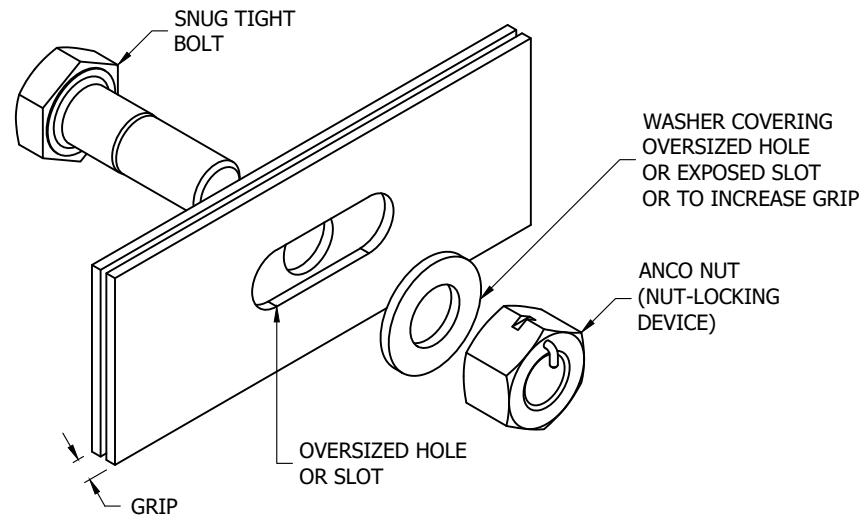


BOLT ASSEMBLY SUFFIX "GALW"
(SNUG TIGHT BOLT, LOCK WASHER, & NUT)



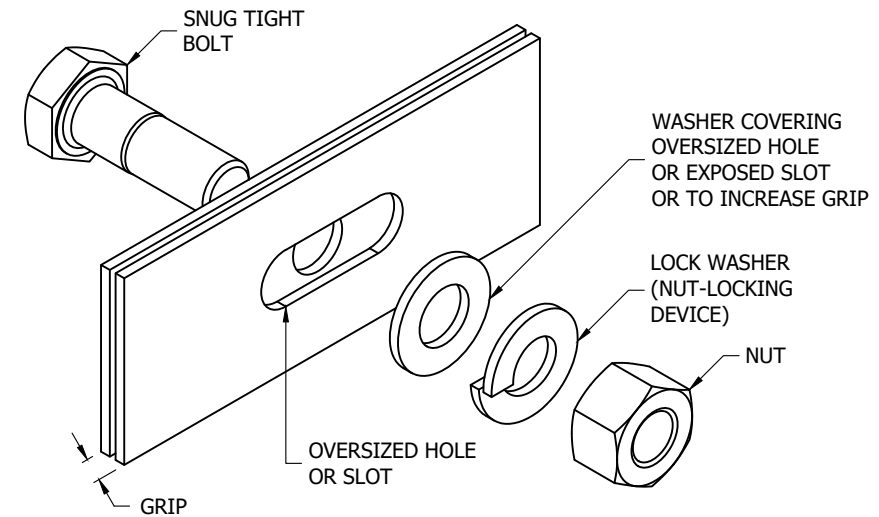
BOLT ASSEMBLY SUFFIX "GAW-TLN"
SLOT ON ONE SIDE OR NARROW GRIP
(SNUG TIGHT BOLT, WASHER, & TRI-LOC NUT)

**SNUG TIGHT BOLT
TRI-LOC NUT**



BOLT ASSEMBLY SUFFIX "GAWAN"
SLOT ON ONE SIDE OR NARROW GRIP
(SNUG TIGHT BOLT, WASHER, & ANCO NUT)

**SNUG TIGHT BOLT
ANCO NUT**



BOLT ASSEMBLY SUFFIX "GAWLW"
SLOT ON ONE SIDE OR NARROW GRIP
(SNUG TIGHT BOLT, WASHER, LOCK WASHER, & NUT)

**SNUG TIGHT BOLT
LOCK WASHER**

FILE NO.

REVISIONS				
REV	DESCRIPTION	DWN	CHK	APP
9	ADDED BOLT ASSEMBLY VIEWS	JHY	JDM	HA
DATE: 11/11/2019				



PO BOX 5999
PEORIA, IL 61601-5999
TOLL FREE 800-727-ROHN

THIS DRAWING IS THE PROPERTY OF ROHN. IT IS NOT TO BE REPRODUCED, COPIED OR TRACED IN WHOLE OR IN PART WITHOUT OUR WRITTEN CONSENT.

ROHN STANDARD
BOLT ASSEMBLY INSTALLATIONS

DWN:	OH	CHK'D:	GHB	DATE:	07/05/1979
ENGR:	TWS	SHEET #:	2 OF 2		
PRJ. ENGR:		PRJ. MANG'R:			
DRAWING NO:	A790135			REV:	9