

ROHNjack

Safety & Instruction Manual

**"G Series" Tower Assembly
& Disassembly Tool**



Never Accept Second Best

**READ THIS MANUAL BEFORE USING THIS PRODUCT.**

Failure to follow the instructions and safety precautions in this manual can result in serious injury or death. Keep this manual in a safe location for future reference when using this product.

WARNING:

Do not use ROHNjack unless you completely understand how it works and are familiar with tower safety procedures!

AVOID TOWER WORK DURING INCLEMENT WEATHER. Wind, rain, snow, hail, ice and other wet weather conditions will make the tower slippery and create a risk of serious injury or death. Use of the ROHNjack while doing tower repair in wind, thunderstorms, lightning, and other weather conditions creates a serious risk of injury or death.

ALWAYS USE SAFETY LANYARD WHILE USING ROHNjack. Do not hoist ROHNjack to working height without a lanyard, and always secure it to tower. Make others aware of the possibility of falling objects. Lanyard not supplied.

LANYARD IS NOT DESIGNED OR RATED FOR YOUR PERSONAL SAFETY, only to hold the tool from falling. Do not use it on your fall arrest harness or to hold climber to the tower.

POWER LINES CAN KILL YOU. Look up before you go up. Don't work under power lines or with any object that can come in contact with a power line, i.e., antennas, poles, ladders, etc. Contact with power lines can result in serious injury or death.

FALL DANGER: ALWAYS WEAR FALL ARREST HARNESS WHEN WORKING ON A TOWER. Failure to use or properly attach a harness can result in serious injury or death.

ALWAYS HAVE A HELPER WITH YOU WHEN DOING TOWER WORK. This is both for safety and convenience. Make the helper aware of the possibility of falling objects.

WORKING AT HEIGHTS: If you are not comfortable working at heights, get professional help. When working at heights, always work in plenty of light and dry conditions with a harness. Failure to maintain balance and have proper safety harness can result in serious injury or death.

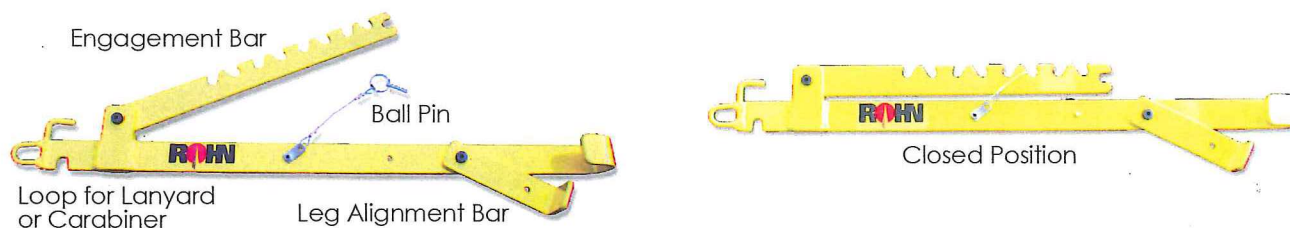
BEFORE EACH USE, CHECK THE FOLLOWING:

1. Hardware: Make sure both bolts and nuts are present and tight on ROHNjack.
2. Use ball pin to secure engagement and alignment bars so they don't pinch you while hoisting tool to operating height
3. Look for bends, deformities, cracks, or missing parts on tool.
4. Check lanyard for frays, cuts or separations. Check carabineers for cracks, bends, etc. Do not use if these conditions are present. Toss it and get a new lanyard. **WARNING:** Lanyard is not a personal safety device! Do not use it on safety harness or as a safety line!

THE BUYER UNDERSTANDS THE ABOVE POTENTIAL HAZARDS OF USING THE ROHNjack AND WORKING AT HEIGHTS, AS WELL AS OTHERS THAT MAY ARISE WITHOUT WARNING, AND HOLDS MANUFACTURER HARMLESS FOR ANY AND ALL CLAIMS THAT MAY ARISE OUT OF THE USE OR INSTALLATION OF THE PRODUCT, WHETHER FOR INJURY OR DAMAGE TO PROPERTY OF ANY KIND INCLUDING ANTENNA TOWERS AND DAMAGE OR INJURY TO ANY THIRD PARTY.

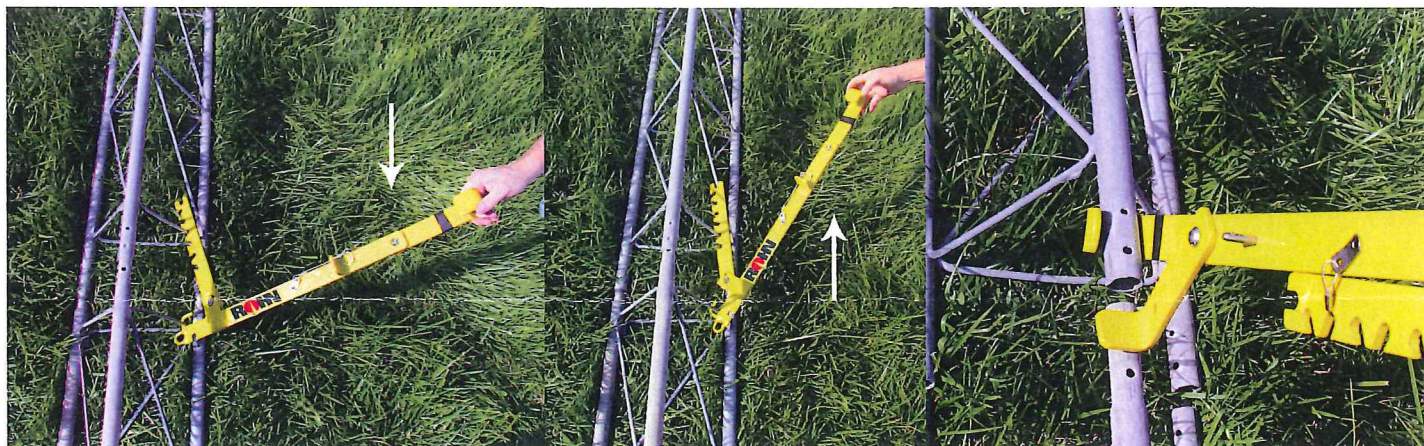
KEEP THESE INSTRUCTIONS FOR FUTURE REFERENCE.

ROHNjack allows for easy removal and assembly of ROHN tower sections. It is designed to fit ROHN 20, 25G, 45G and 55G. (The leg alignment end of the tool will not fit on ROHN 55G, but will assemble and disassemble sections.)



BALL PIN: Use ball pin to keep both rotating bars from moving when hoisting ROHNjack to working height, for storage, or to keep one end from rotating when using the opposite end. Wrap cable around engagement bar to secure it. Leg alignment bar is secured by swiveling it backwards and inserting pin through both holes.

NOTE: It is possible to put too much force on tower rungs with this tool, deforming them in the process. Be careful and watch what you are doing. Use tool a little at a time around each side of the tower so tower section is removed evenly.



ASSEMBLING TOWER SECTIONS

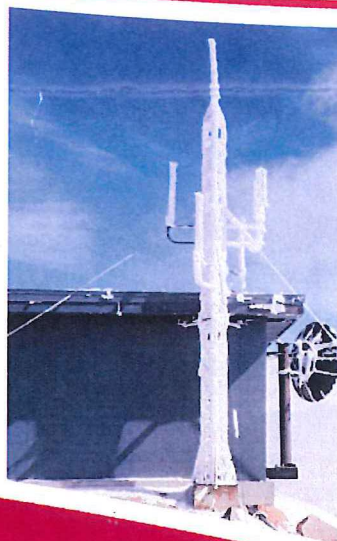
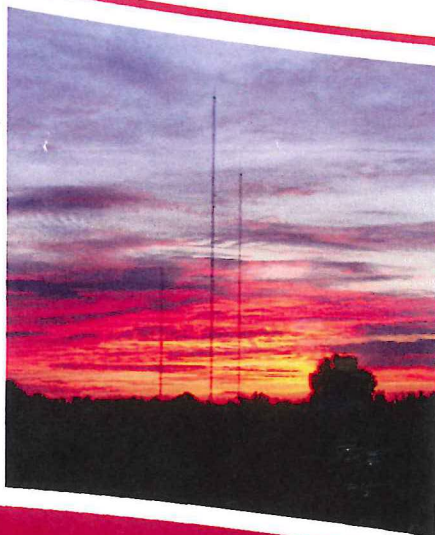
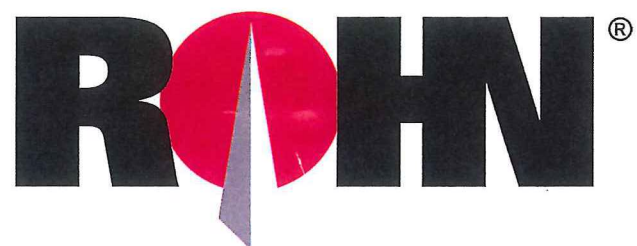
ROHNjack can be used to pull tower legs together. Always test fit sections on the ground before trying to do it in the air. Mark each section so they can be assembled in the air in the same order and same alignment as test fitting on the ground. Place ROHNjack on tower as seen above. Tower rung should be placed in engagement bar slots that are facing up. Pull handle down to bring sections together. It may be necessary to "ratchet" the engagement bar by repositioning it in a different slot to get a new engagement, and then continue bringing sections together until fully joined.

DISASSEMBLING TOWER SECTIONS

ROHNjack can be used to push stuck tower sections apart. After bolts are removed from all three legs, position ROHNjack as shown. Push up on end of tool to "lever" sections apart. It may be necessary to "ratchet" the tool into another engagement bar slot to continue pushing tower sections apart. This procedure should be followed near each tower leg, going around the tower multiple times to get stubborn sections apart. **NOTE:** It is possible to position the ROHNjack upside down as compared with above photos. This would change the upward motion on the end of the tool to a downward motion.

ALIGNING TOWER LEGS

ROHNjack can be used to align a bent or off axis leg. First, secure engagement bar with ball pin cable. Position alignment end of tool as shown. Pulling on handle can leverage leg into alignment with opposite leg. It may be necessary to have a helper pull upper leg onto lower one while using tool. When all three legs are fitted together, use tool as described above to fully assemble tower sections.



Corporate Headquarters

#1 Fairholm Avenue
Peoria, IL 61603, USA

www.rohnnet.com

Mail To:

PO Box 5999
Peoria, IL 61601-5999

Phone: (309) 566-3000