

SECURE THE BRACE TUBES TO THE MAST USING 5/16" x 3-1/2" CARRIAGE BOLTS W / NUT AND LOCK WASHER. TYP 2 PLACES

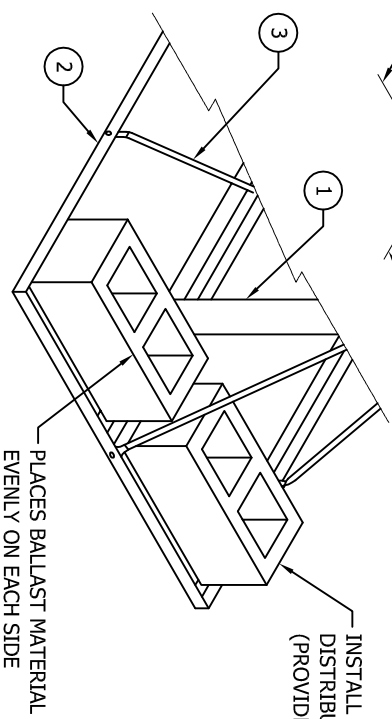
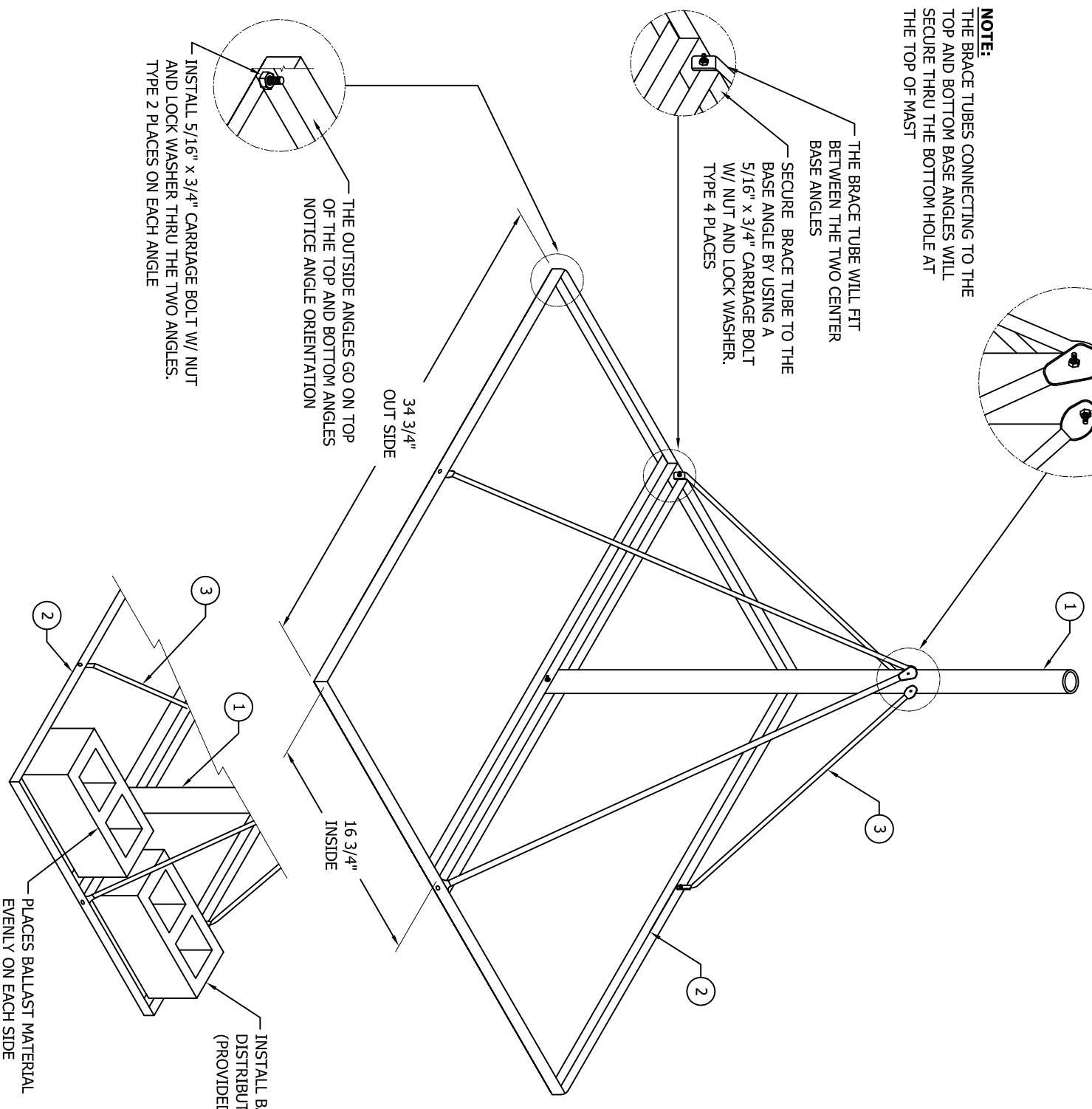
NOTE:
THE BRACE TUBES CONNECTING TO THE TOP AND BOTTOM BASE ANGLES WILL SECURE THRU THE BOTTOM HOLE AT THE TOP OF MAST

THE BRACE TUBE WILL FIT BETWEEN THE TWO CENTER BASE ANGLES

SECURE BRACE TUBE TO THE BASE ANGLE BY USING A 5/16" x 3/4" CARRIAGE BOLT W/ NUT AND LOCK WASHER. TYP 4 PLACES

THE OUTSIDE ANGLES GO ON TOP OF THE TOP AND BOTTOM ANGLES NOTICE ANGLE ORIENTATION

INSTALL 5/16" x 3/4" CARRIAGE BOLT W/ NUT AND LOCK WASHER THRU THE TWO ANGLES. TYP 2 PLACES ON EACH ANGLE



FRM ASSEMBLY DRAWING			
BILL OF MATERIAL			
ITEM	PART NO.	DESCRIPTION	DWG. NO.
1	1	SEE CHART	B970107
6	6	FY200	A950178
		FY256	A950178
4	4	FY265	A970093
4	4	FY266	A970093
1	1	FYS200	A950129

FYS200 BILL OF MATERIAL		
QTY.	PART NO.	DESCRIPTION
3	220390	BOLT 5/6" x 3-1/2" (CARRIAGE)
12	220205	BOLT 5/16" x 3/4" (CARRIAGE)
15	240014	NUT 5/16"
15	250060	LOCK WASHER 5/16"

- NOTES :**
- BALLAST DATA SHOULD BE DETERMINED BY A LOCAL PROFESSIONAL ENGINEER. ADEQUATE BALLAST MATERIAL MUST BE DETERMINED AND PROVIDED BY OTHERS TO PREVENT OVERTURNING AND SLIDING AT THE DESIGN WIND LOAD. (REFER TO SHEET 2)
 - PRIOR TO INSTALLATION VERIFY THAT THE INSTALLATION, ROOF MATERIAL AND SUPPORTING STRUCTURE HAVE BEEN INVESTIGATED AND FOUND CAPABLE OF WITHSTANDING ALL LOAD IMPOSED BY THE PROPOSED ANTENNA SYSTEM. CONFIRM THAT THE SUPPORTING SURFACES, ANCHORS, AND/OR SAFETY CABLES, IF REQUIRED, HAVE BEEN FOUND TO BE ADEQUATE TO RESIST THE REACTIONS FROM THE ANTENNA SYSTEM AND THAT THE INSTALLATION WILL BE IN COMPLIANCE WITH ALL APPLICABLE LOCAL, STATE AND FEDERAL REQUIREMENTS.
 - ALL ANTENNA INSTALLATIONS MUST BE GROUNDED TO MEET APPLICABLE CODES.
 - SAFETY CABLE KITS CONSISTING OF A 3/16 EHS SAFETY CABLE (3990 LBS. ULTIMATE STRENGTH) WITH SIX CLAMPS TO SECURE MOUNT AND/OR BALLAST ARE AVAILABLE AS AN OPTION. USE THREE CABLE CLAMPS AT EACH END CONNECTION WITH THE U- BOLT ON THE DEAD END OF THE CABLE.

SAFETY CABLE LENGTH	PART NUMBER
50 FT	SCK50
100 FT	SCK100
150 FT	SCK150

- WHEN ASSEMBLING THE FRAMES IT IS BEST TO ASSEMBLE ALL TUBES AND ANGLES LOOSE. AFTER THE TUBE BRACES ARE IN PLACES AND SQUARE, THEN GO BACK AND TIGHTEN DOWN ALL BOLTS.
- ROHN RECOMMENDS THAT BALLAST MATERIAL ALWAYS BE PLACED PRIOR TO MOUNTING ANTENNAS AND THAT THE MOUNT BE SECURED TO PREVENT HAZARDS FROM OCCURRING UNDER EXTREME WIND LOADING CONDITIONS.
- PRECAUTIONS SHOULD BE TAKEN TO PREVENT THE INADVERTENT REMOVAL OF BALLAST MATERIAL AFTER INSTALLATION AND TO INSURE THAT THE BALLAST MATERIAL IS FULLY SUPPORTED BY THE BALLAST SUPPORT ANGLES.
- BOLTS ARE PROVIDED WITH LOCKING DEVICES. INSPECT MOUNT, ANTENNA AND TIGHTNESS OF NUTS AT SIX MONTH MAXIMUM INTERVALS.

FILE NO. Standard-RAM

REV	DESCRIPTION	DWN	CHK	APP
6	REDRAWN AUTOCAD FORMAT ADDED SHEET 2	M.F	JDM	HA
7	DATE: Jun/22/2009			
	REVISIONS			
	DATE: Jun/22/2009			
	REVISIONS			
	DATE: May/19/2010	CHW	JDM	HA

FABRICATION TOLERANCES

1.) BOLT HOLE DIAM. UNDER 1-3/8"	+ .040" (1mm)
	- 0
BOLT HOLE DIAM. 1-3/8" & GREATER	+ .060" (1.5mm)
	- .060" (1.5mm)
2.) CENTER LINE INTERSECTION	+ .060" (1.5mm)
	- .060" (1.5mm)
3.) OUTSIDE CORNER RADIUS	+ .12" (3mm)
	- 0
4.) LINEAR DIMENSIONS	+ .060" (1.5mm)
	- .060" (1.5mm)
5.) CENTER HOLE DIAMETER FOR FLANGES	+ .12" (3mm)
	- 0
6.) WIDTH/OUTSIDE DIAMETER/EDGE DISTANCE	+ .12" (3mm)
	- 0

NOTE:
HOLES MAY BE PUNCHED, DRILLED OR THERMALLY CUT UNLESS OTHERWISE INDICATED ON FABRICATION DRAWING. SURFACE ROUGHNESS PROFILE SHALL NOT EXCEED 1,000 In/125mm. GROOVES SHALL NOT EXCEED A DEPTH OF .040 In. (1mm).

THIS DRAWING IS THE PROPERTY OF ROHN. IT IS NOT TO BE REPRODUCED, COPIED OR TRACKED IN WHOLE OR IN PART WITHOUT OUR WRITTEN CONSENT.

ROHN
PRODUCTS

6718 WEST PLANK ROAD
PEORIA, IL 61604
TOLL FREE 800-727-ROHN

ANTENNA MOUNT
FRM ROOF MOUNT

DWN:	CHK'D:	DATE:
SJT	MDH	Jun/22/2009
ENGR:	MDH	
DRAWING NO:	D950008-1	REV:
		7