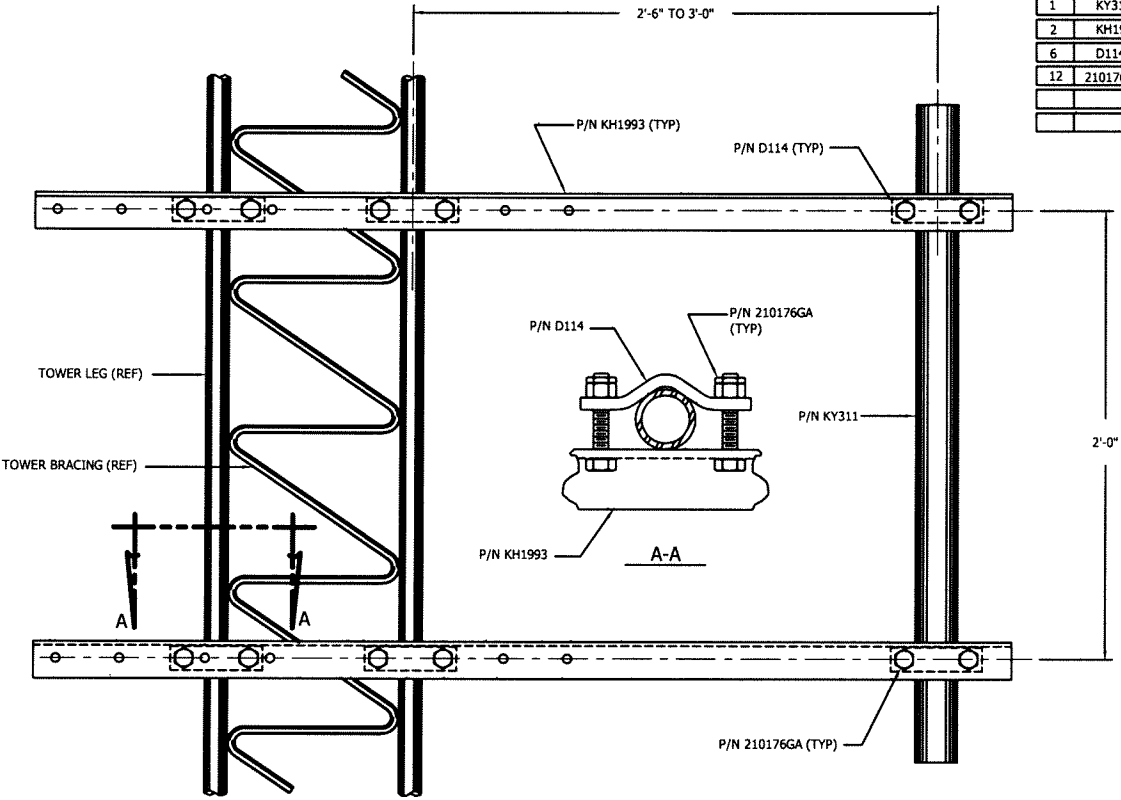


FILE NO. Standard-RAM

REVISIONS				
REV.	DESCRIPTION	DWN.	CHK.	APP.
5	REDRAWN IN AUTOCAD DATE: May/17/2006	JDM	N.F.	H.A.
6	UPDATED TITLE BLOCK DESCRIPTION DATE: Nov/24/2008	JDM	JWS	HA

ASSEMBLY P/N SA253UA BILL OF MATERIAL			
QTY	PART NO.	DESCRIPTION	DWG. NO.
1	KY311	MOUNTING TUBE 2-1/4 X 14GA X 3' LG	C750060
2	KH1993	MOUNTING ANGLE 2 X 1/8 X 4.95' LG	C830232
6	D114	SADDLE CLAMP	B770214
12	210176GA	3/8 X 2-1/2 BOLT ASSY	N/A



NOTE: OUTSTANDING LEG HAS BEEN OMITTED FOR CLARITY

NOTE: THIS SIDE ARM IS DESIGNED FOR AN ALLOWABLE ANTENNA LOADING OF 90 LBS LATERAL THRUST

NOTE: SIDE ARM MOUNTING ANGLE MUST BE LOCATED AS CLOSE AS POSSIBLE TO LEG/BRACE INTERSECTION

DWG REFERENCE



6718 WEST PLANK ROAD  
PEORIA, IL 61604  
TOLL FREE 800-727-ROHN

THIS DRAWING IS THE PROPERTY OF ROHN. IT IS NOT TO BE REPRODUCED, COPIED OR TRACED IN WHOLE OR IN PART WITHOUT OUR WRITTEN CONSENT.

ANTENNA MOUNT  
SIDE ARM 2.5-3' FOR 25G,45G,55G & 65G

DWN: KTL    CHK'D: CW    DATE: Dec/17/1982

ENG'R: TWS

DRAWING NO: C821662    REV: 6

Aug/20/2009 11:07:24 AM

Version