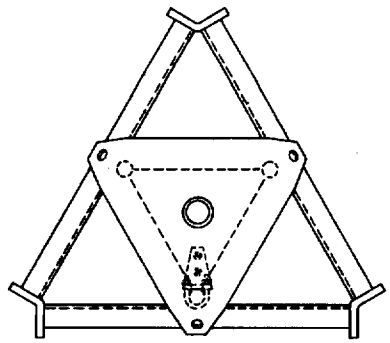
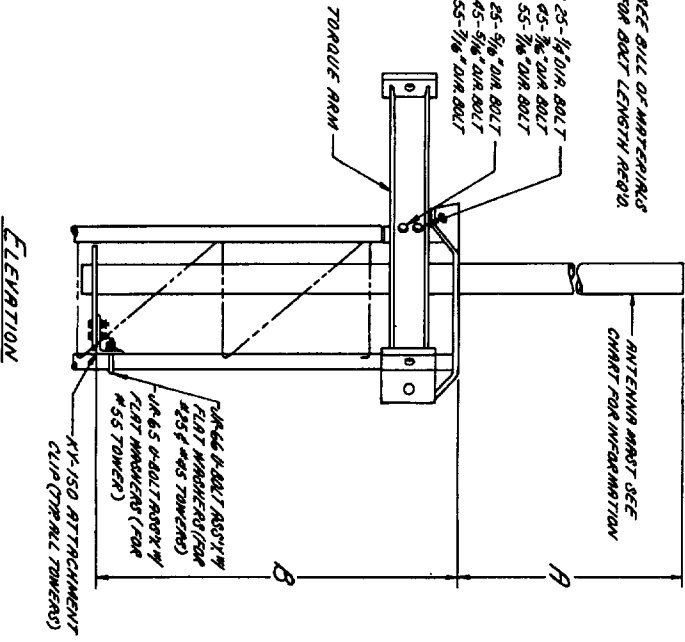


TORQUE ARM & DISH MOUNT MUST BE ORDERED SEPARATELY



PLAN

*** SEE BILL OF MATERIALS FOR BOLT LENGTH REQ'D.**



ELEVATION

NO. 25 TOWER

TOP DISH MOUNTS				
ASSY. NO.	PART NO.	QTY	DESCRIPTION	DRAWING NO.
25TDM 2	HT-57	1	ANTENNA MAST	320009A
	HT-58	3	ATTACHMENT CLIP	320009A
	HT-59	6	U-BOLT ASSY WITH WASHERS	320009A
	HT-60	3	5/8" X 1 1/4" BOLT ASSY.	C170904
	HT-61	3	1/2" X 1 1/2" BOLT & NUT	
	HT-62	3	5/8" X 1 1/2" BOLT & NUT	
25TDM 2SP	HT-57	1	ANTENNA MAST	320009A
	HT-58	3	ATTACHMENT CLIP	320009A
	HT-59	6	U-BOLT ASSY WITH WASHERS	320009A
	HT-60	3	5/8" X 1 1/4" BOLT ASSY.	C170904
	HT-61	3	1/2" X 1 1/2" BOLT & NUT	
	HT-62	3	5/8" X 1 1/2" BOLT & NUT	
25TDM 2EH	HT-57	1	ANTENNA MAST	320009A
	HT-58	3	ATTACHMENT CLIP	320009A
	HT-59	6	U-BOLT ASSY WITH WASHERS	320009A
	HT-60	3	5/8" X 1 1/4" BOLT ASSY.	C170904
	HT-61	3	1/2" X 1 1/2" BOLT & NUT	
	HT-62	3	5/8" X 1 1/2" BOLT & NUT	
25TDM 25SP	HT-57	1	ANTENNA MAST	320009A
	HT-58	3	ATTACHMENT CLIP	320009A
	HT-59	6	U-BOLT ASSY WITH WASHERS	320009A
	HT-60	3	5/8" X 1 1/4" BOLT ASSY.	C170904
	HT-61	3	1/2" X 1 1/2" BOLT & NUT	
	HT-62	3	5/8" X 1 1/2" BOLT & NUT	

TORQUE ARM

ASSY. NO.	PART NO.	QTY	DESCRIPTION	DRAWING NO.
25TDM 2	TA-50	1	TORQUE ARM W/ BUSHINGS	320009A
	TA-51	3	5/8" X 2" BOLT & NUT	
	TA-52	3	5/8" X 2 1/2" BOLT & NUT	

NO. 45 TOWER

TOP DISH MOUNTS				
ASSY. NO.	PART NO.	QTY	DESCRIPTION	DRAWING NO.
45TDM 2	HT-57	1	ANTENNA MAST	320009A
	HT-58	3	ATTACHMENT CLIP	320009A
	HT-59	6	U-BOLT ASSY WITH WASHERS	320009A
	HT-60	3	5/8" X 1 1/4" BOLT ASSY.	C170904
	HT-61	3	1/2" X 1 1/2" BOLT & NUT	
	HT-62	3	5/8" X 1 1/2" BOLT & NUT	
45TDM 2SP	HT-57	1	ANTENNA MAST	320009A
	HT-58	3	ATTACHMENT CLIP	320009A
	HT-59	6	U-BOLT ASSY WITH WASHERS	320009A
	HT-60	3	5/8" X 1 1/4" BOLT ASSY.	C170904
	HT-61	3	1/2" X 1 1/2" BOLT & NUT	
	HT-62	3	5/8" X 1 1/2" BOLT & NUT	
45TDM 2EH	HT-57	1	ANTENNA MAST	320009A
	HT-58	3	ATTACHMENT CLIP	320009A
	HT-59	6	U-BOLT ASSY WITH WASHERS	320009A
	HT-60	3	5/8" X 1 1/4" BOLT ASSY.	C170904
	HT-61	3	1/2" X 1 1/2" BOLT & NUT	
	HT-62	3	5/8" X 1 1/2" BOLT & NUT	
45TDM 25SP	HT-57	1	ANTENNA MAST	320009A
	HT-58	3	ATTACHMENT CLIP	320009A
	HT-59	6	U-BOLT ASSY WITH WASHERS	320009A
	HT-60	3	5/8" X 1 1/4" BOLT ASSY.	C170904
	HT-61	3	1/2" X 1 1/2" BOLT & NUT	
	HT-62	3	5/8" X 1 1/2" BOLT & NUT	

TORQUE ARM

ASSY. NO.	PART NO.	QTY	DESCRIPTION	DRAWING NO.
45TDM 2	TA-50	1	TORQUE ARM	320009A
	TA-51	3	5/8" X 2 1/2" BOLT & NUT	
	TA-52	3	5/8" X 2 1/2" BOLT & NUT	

NO. 55 TOWER

TOP DISH MOUNTS				
ASSY. NO.	PART NO.	QTY	DESCRIPTION	DRAWING NO.
55TDM 2	HT-57	1	ANTENNA MAST	320009A
	HT-58	3	ATTACHMENT CLIP	320009A
	HT-59	6	U-BOLT ASSY WITH WASHERS	320009A
	HT-60	3	5/8" X 1 1/4" BOLT ASSY.	C170904
	HT-61	3	1/2" X 1 1/2" BOLT & NUT	
	HT-62	3	5/8" X 1 1/2" BOLT & NUT	
55TDM 2SP	HT-57	1	ANTENNA MAST	320009A
	HT-58	3	ATTACHMENT CLIP	320009A
	HT-59	6	U-BOLT ASSY WITH WASHERS	320009A
	HT-60	3	5/8" X 1 1/4" BOLT ASSY.	C170904
	HT-61	3	1/2" X 1 1/2" BOLT & NUT	
	HT-62	3	5/8" X 1 1/2" BOLT & NUT	
55TDM 2EH	HT-57	1	ANTENNA MAST	320009A
	HT-58	3	ATTACHMENT CLIP	320009A
	HT-59	6	U-BOLT ASSY WITH WASHERS	320009A
	HT-60	3	5/8" X 1 1/4" BOLT ASSY.	C170904
	HT-61	3	1/2" X 1 1/2" BOLT & NUT	
	HT-62	3	5/8" X 1 1/2" BOLT & NUT	
55TDM 25SP	HT-57	1	ANTENNA MAST	320009A
	HT-58	3	ATTACHMENT CLIP	320009A
	HT-59	6	U-BOLT ASSY WITH WASHERS	320009A
	HT-60	3	5/8" X 1 1/4" BOLT ASSY.	C170904
	HT-61	3	1/2" X 1 1/2" BOLT & NUT	
	HT-62	3	5/8" X 1 1/2" BOLT & NUT	

TORQUE ARM

ASSY. NO.	PART NO.	QTY	DESCRIPTION	DRAWING NO.
55TDM 2	TA-50	1	TORQUE ARM	320009A
	TA-51	3	5/8" X 2 1/2" BOLT & NUT	
	TA-52	3	5/8" X 2 1/2" BOLT & NUT	

GENERAL NOTES

1. THE TOP DISH MOUNTS AND THE TORQUE ARMS ARE SEPARATE UNITS AND MAY BE USED IN COMBINATION WITH EACH OTHER, AS SHOWN, OR AS DETACHED UNITS. THE TORQUE ARM MAY BE INSTALLED AT THE LEVER OF ANY TOWER JOINT WHEN THE TORQUE ARM IS INSTALLED AS SHOWN ONLY.
2. FLAT WASHERS ARE PROVIDED FOR ALL BOTTLED NUTS.
3. ALL DRAWINGS NOT REFERENCED ARE FABRICATED AS SHOWN FOR SHOP USE ONLY.
4. ALL NUTS ARE PROVIDED WITH 1/8" BUSHINGS FOR ALL BOTTLED NUTS ONLY.

UNISCO-POLIN

TO DISH MOUNT & TORQUE ARM ASSY FOR LOWER MODELS - 14, 25, 45, 55

DATE: 10-15-76 C-760786 R 3