

## RAS-ELITE

### Portable Auto-Acquire Outdoor Wireless TCP/IP Data Terminal

The portable RDL-3000 RAS-Elite provides secure wireless transport directly to temporary field offices, rigs, trucks and other semi-permanent locations. Easily transported and operated by non-technical personnel with no special training, the RAS-Elite automatically obtains and holds a reliable high-speed connection to the fixed Redline wireless network.

#### FEATURES AND BENEFITS

- ❑ The highly reliable touchless connection and self-aiming antenna (no moving parts) requires no specialized (telecom) personnel for normal operation
- ❑ High throughput for concurrent transport of M2M telemetry and telecontrol, data, video and voice services
- ❑ Durable all-weather enclosure for reliable operation in a wide range of temperatures and environmental conditions
- ❑ Over-the-air monitoring, configuration and software keyed features enable upgrades without physical access
- ❑ Software-defined architecture enhances reliability and service lifetime

#### PRODUCT COMPLEMENTS

The RAS-Elite is fully compatible with all Redline RDL-3000 family base stations and wireless terminals. Redline provides a complete selection of peripherals and professional services for all your deployment needs.

#### UNIFIED GLOBAL SOLUTIONS

Redline's patented UWT™ technology provides a truly unified wireless networking solution—across the spectrum, across your company and across the globe—enabling secure, reliable, high-speed connectivity to people and smart devices everywhere.



#### SYSTEM AT A GLANCE

Portable auto-acquire outdoor software-defined 186.6 Mbps wireless terminal

Extends high speed TCP/IP transport to vehicles, rigs, portable offices and other movable assets

Reliable fast transport of M2M, data, HD video and voice traffic

Fully nomadic with auto-acquire and automatic antenna alignment with built-in GPS

Integrated MIMO antenna

-40 to 60 °C operating range using dynamic and thermal dissipation (no moving parts)

High-grade cyber security features

Very low latency supports time-sensitive applications

Over-the-air monitoring, configuration, upgrades and software keyed speeds and features

## RAS-ELITE SPECIFICATIONS

<b>Capability</b>	LOS/0LOS/NLOS PMP Terminal
<b>Wireless transmission</b>	OFDM (orthogonal frequency-division, multiplexing), TDD/TDMA 2 x 2 MIMO A/B with STBC & MRRC
<b>RF Band (MHz)</b>	4940-5400 <sup>1</sup> , 5400-5875 <sup>1</sup>
<b>Channel Size (MHz)</b>	0.875/1.25/1.75/2.5/3.5/5/6/7/10/12/14/20 software selectable <sup>1</sup>
<b>Modulation &amp; Coding</b>	BPSK 1/2 to 64 QAM 5/6, 256 QAM <sup>1</sup>
<b>System Capacity</b>	3 Mbps to 186.6 Mbps <sup>1</sup> UBR
<b>Max Range</b>	29 Km (18 mi)
<b>Max EIRP</b>	37 dBm <sup>1</sup> (2 x 34 dBm) <sup>1</sup>
<b>Antenna Info</b>	Integrated Dual-Pol, 360° azimuth view
<b>Wireless QoS</b>	Dynamic Spectrum Access & Management <sup>1</sup>
<b>MAC</b>	Dynamic ARQ
<b>Security</b>	AES-128/256 (OTA, FIPS 197 compliant) HTTPS (SSL), SSH (CLI), SNMP v3, MAC-based Mutual Authentication, ECDSA Certificates Authentication <sup>1</sup> , FIPS 140-2 <sup>1</sup>
<b>Connection</b>	10/100 Ethernet (RJ-45)
<b>Layer 2</b>	512 Kbps to 100 Mbps <sup>1</sup>
<b>Latency</b>	<10 ms
<b>Processing (PPS)</b>	>150,000
<b>Attributes</b>	Transparent bridge, DHCP pass-through, 802.1Q VLAN
<b>Network QoS</b>	CIR, PIR support, multiple services per terminal, 802.3x, 802.1p
<b>Management</b>	Redline ClearView NMS, HTTP (Web), SNMP v2, Telnet (CLI), RADIUS (User Authentication)
<b>Temperature</b>	-40 to 60 °C (-40 to 140 °F)
<b>Enclosure</b>	IP67 (IEC 60259)
<b>Humidity</b>	100% humidity, condensing
<b>Surge Protection</b>	Built-in: PoE and RF ports
<b>Location &amp; Timing</b>	Built-in GPS <sup>1</sup>
<b>Mount</b>	Pole, truck rack or magnetic
<b>Power</b>	<13W; Standard IEEE 802.3at (PoE); CAT5 cable 100m (330 ft) max.

All specifications are subject to change without notice.

1. Availability restricted by regional regulations, model type, software version and purchased product options; 2. In process

## Compliance

Safety: IEC, EN, and UL/CSA 60950

EMC: EN 301 489-17, EN 301 489-1 v.1.8.1, Part 1, EN 301 489 -4 v.1.4.1, Part 4

5.8 GHz<sup>1</sup>: IC RSS-210, FCC Part 15, ETSI EN 302 502

5.4 GHz<sup>1</sup>: IC RSS-210, FCC Part 15, ETSI EN 301 893

4.9 GHz<sup>1</sup>: IC RSS-111, FCC Part 90

Security: FIPS 140-2<sup>2</sup>, FIPS 197 compliant

Vibration: MIL-STD-810F, Method 514.5

Drop Test: MIL-STD-810G, Method 516.6

Ice: Defense Standard-035 part 3 Issue 4



## Physical Attributes

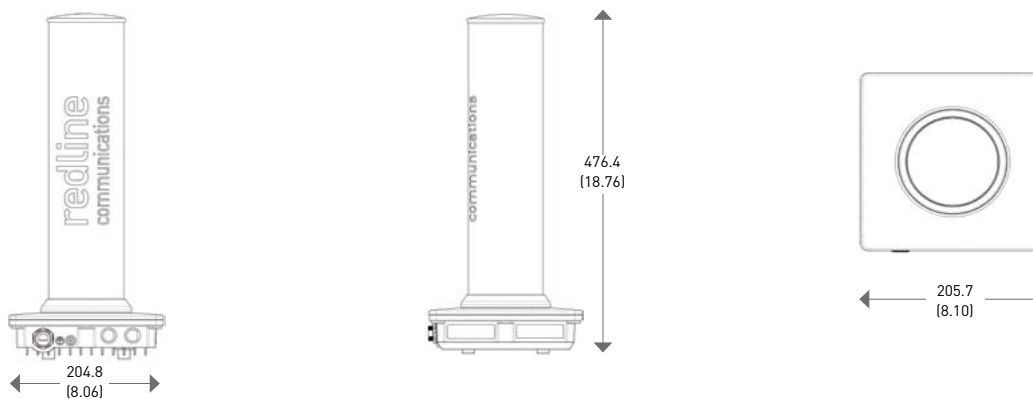
### Dimensions

204.8 x 476.4 x 205.7 mm (8.06 x 18.76 x 8.10 in)

### Weight

3.0 kg (6.6 lbs) without bracket

## DRAWINGS



Dimensions are in millimeters (inches)

302 Town Centre Blvd.  
Markham, ON L3R 0E8 Canada

**w** rdlcom.com **t** +1.905.479.8344  
**e** info@rdlcom.com **tf** +1.866.633.6669

© 20150406 RAS-Elite © 2015 Redline Communications Inc. All rights reserved.

**redline**<sup>®</sup>  
communications