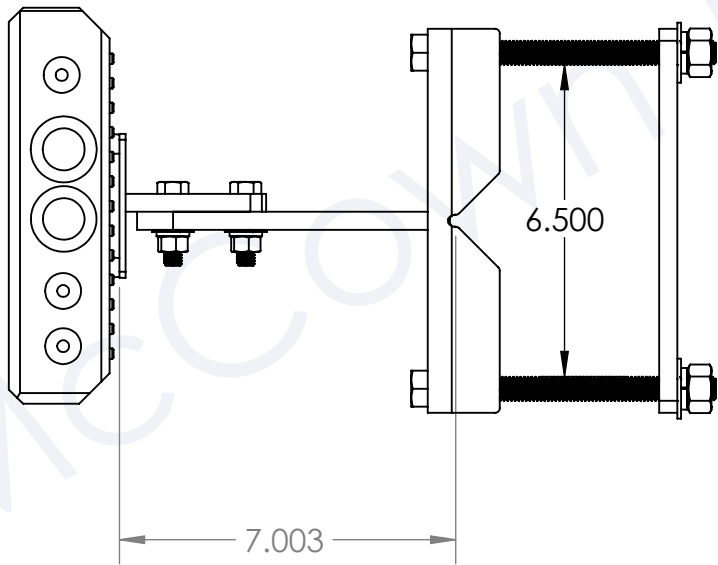
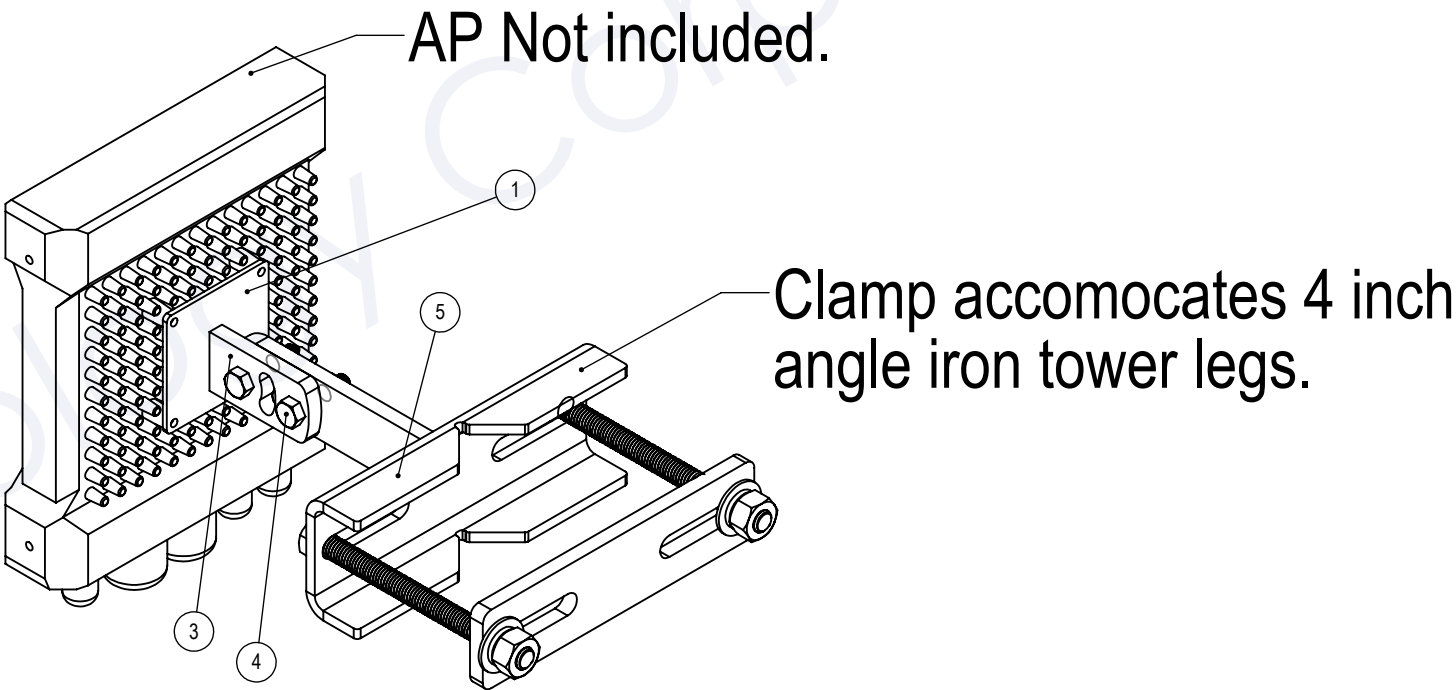
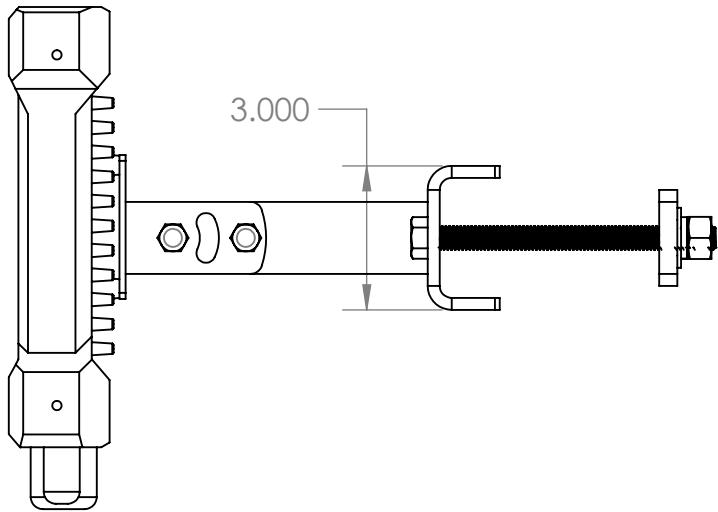



ITEM NO.	PART NUMBER	DESCRIPTION	QTY.
1	AP Plate		1
3	851-150-.375-SF		1
4	.375 x .755 gap Bolt Stack	.375 Bolt Stack	2
5	Angle Adapter		1



PROPRIETARY AND CONFIDENTIAL
THE INFORMATION CONTAINED IN THIS DRAWING IS THE SOLE PROPERTY OF MCCOWN TECHNOLOGY CORP. ANY REPRODUCTION IN PART OR AS A WHOLE WITHOUT THE WRITTEN PERMISSION OF MCCOWN TECHNOLOGY CORP IS PROHIBITED.

		UNLESS OTHERWISE SPECIFIED: DIMENSIONS ARE IN INCHES TOLERANCES: FRACTIONAL ± ANGULAR: MACH ± BEND ± TWO PLACE DECIMAL ± THREE PLACE DECIMAL ± INTERPRET GEOMETRIC TOLERANCING PER: MATERIAL Carbon Steel FINISH Hot Dipped Galvanize		NAME	DATE	<div>801-250-9503</div> <div> mtc mccoentech.com</div> <div>8400 N Hwy 36 Lakepoint Utah 84074</div>
			DRAWN	CM	2-9-17	
			CHECKED			
			ENG APPR.			
			MFG APPR.			
			Q.A.			TITLE: M-TOW-ANGLE-450 Reference Drawing
			COMMENTS:			
NEXT ASSY	USED ON		SIZE B DWG. NO. REV A			
APPLICATION		DO NOT SCALE DRAWING	SCALE: 1:8 WEIGHT: 8# SHEET 1 OF 1			