



Super-Stinger® Passive Gain Antenna for 2.4 GHz SMs

Part #: 24-SSV; 24-SSH

Description

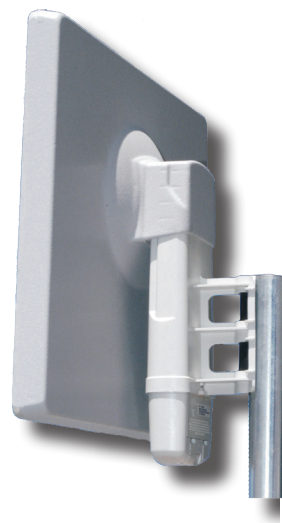
This high gain panel antenna makes use of the patented Stinger® slip on mounting method, thus reducing mounting cost and time of install. The low profile aesthetics of this design reduce visual impacts and windloading. The patented low loss passive coupling system ensures high performance without sacrificing SM warranty.

Applications

- Extend your range to 12 miles* without using a large reflector
- Boost signal levels for marginal customers
- Speed up your installs
- Lowers jitter

Features

- Slip on an extra 11 dB @ 2.4 GHz
- Narrows the pattern to 17 degrees



Specifications

Electrical Specifications

Frequency	2.4 Ghz
Gain	11-19 dBi @ 2.4 Ghz
Beamwidth (3dB)	17 degrees
F/B Ratio	>20 dB
Cross Pole Reject	>20 dB

Mechanical Specifications

Wind Load	26.6 lbs @ 93 MPH
Height	15 inches
Width	15 inches
Weight	1.87 lbs (0.85kg)
Polarization	Vertical or Horizontal

**All range testing and estimates assume a Cyclone AP was used.*

Patent Pending

Antenna Gain Patterns

2.4 SuperStinger Pattern 12 dB above Bare SM

