

Product Data Sheet

☎ 1-855-276-5772 or 780-702-7577
✉ info@kppperformance.com
✉ 15397 117 Ave, Edmonton, AB T5M3X4, Canada



KP-11PDMM-2

0.6M | 2 FT HIGH PERFORMANCE PARABOLIC ANTENNA, DUAL POLARIZED, 10.7-11.7GHZ

- High Performance ETSI Class 2 | FCC Cat. B Parabolic Antennas – Excellent performance for a wide range of point-to-point applications
- Fully Preassembled at the Factory – Simplifies installation onsite and guarantees “factory tested” quality
- Heavy-duty hardware survives 250km/h

Electrical Specification

| | | |
|------------------------------------|--------|-------------------|
| Frequency Band | MHz | 10.7-11.7 |
| Gain (Low Mid High) | dBi | 34 34.3 34.4 |
| Polarization | | Dual |
| Horizontal HPBW | Degree | 3.4 |
| Vertical HPBW | Degree | 3.4 |
| Front-to-Back Ratio @ 180°±30° | dB | 60 |
| Cross-polarization Ratio over HPBW | dB | 30 |
| VSWR | | 1.5 typ 1.8 max |
| Return Loss | dB | 14 typ 11 max |
| Port-to-Port Isolation | dB | 30 typ 24 max |
| Max. Input Power per Port | W | 100 |
| Impedance | Ohms | 50 |

Mechanical Specifications

| | | | |
|---------------------------|----------------------------|------------------------|---------------------|
| Diameter, nominal | 2ft 0.6m | Antenna Color | White |
| Antenna Input | WR90 waveguide | Radome Material | UV resistant ABS |
| Temperature Range | -40° to +60° C | Wind Speed Operational | 145 km/h 90 mph |
| Fine Azimuth Adjustment | + / - 10 degrees | Wind Speed Survival | 250 km/h 155 mph |
| Fine Elevation Adjustment | + / - 10 degrees | Wind Load, Axial (FA) | 899 N 202 lbs |
| Mounting Pipe Diameter | 2 – 4.5 in 5.1 – 11.4 cm | Wind Load, Side (FS) | 445 N 100 lbs |
| Net Weight | 27 lbs 12.3 kg | Twisting Moment (MT) | 194 ft-lbs 263 Nm |

Regulatory Compliance

| | | | |
|------|-----------------|----------------------------|------------|
| FCC | Part 101 Cat. B | Industry Canada Compliance | undeclared |
| ETSI | 302217 R1 C2 | RoHS-compliant | Yes |

Shipping Information

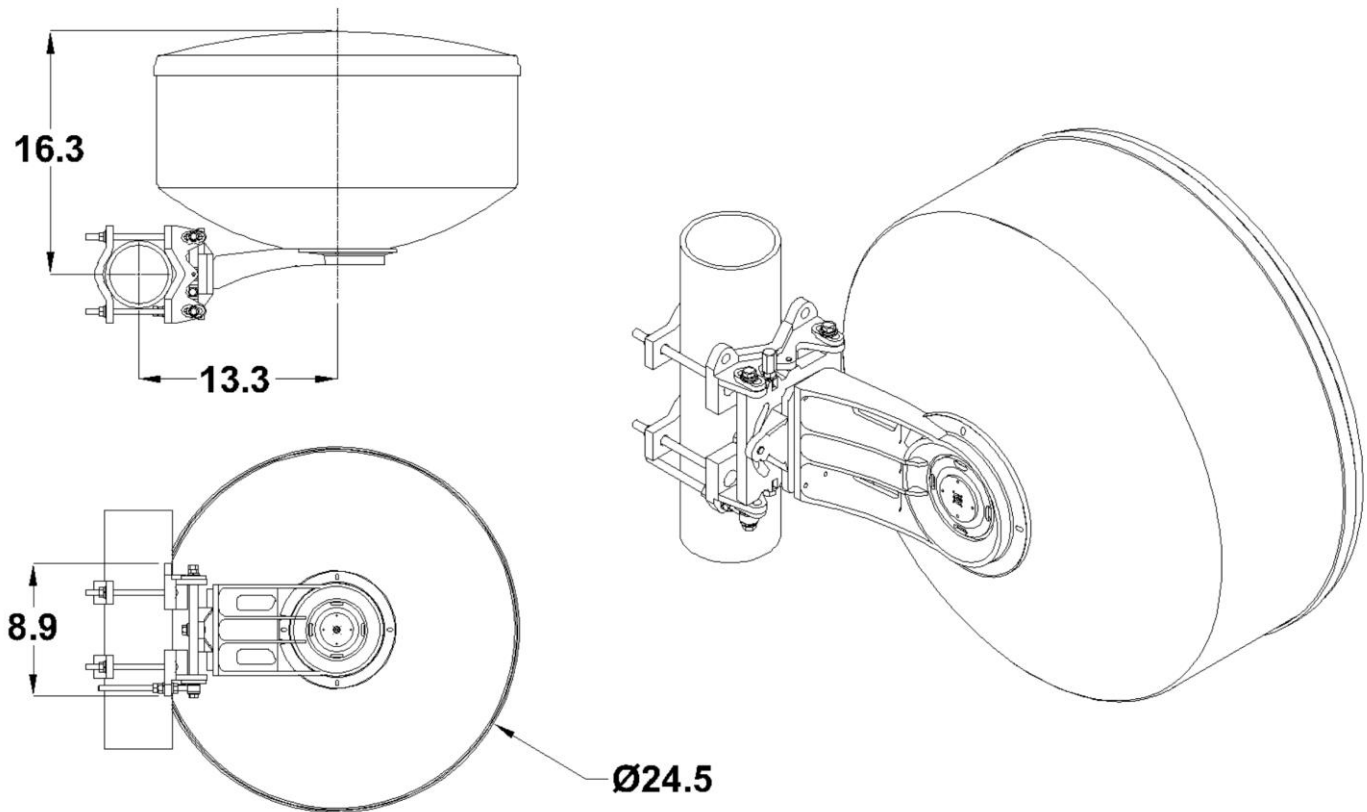
| | | | |
|--------------|------------------|-----------------------|-----------------------------------|
| Package Type | Cardboard | Dimensions, L x W x H | 31 x 31 x 25 in 79 x 79 x 64 cm |
| Gross Weight | 48 lbs 28.7 kg | Shipping Volume | 13.9 cu ft 0.39 cu m |

Product Data Sheet

☎ 1-855-276-5772 or 780-702-7577
💻 info@kpperformance.com
✉ 15397 117 Ave, Edmonton, AB T5M3X4, Canada



Mechanical Drawings



Appendix

HPBW: Average and variation of the antenna's 3dB beamwidth (half power beamwidth) in its horizontal (Azimuth) or vertical (Elevation) pattern.

Gain: Antenna's average gain and variation in each frequency band.

Front to Back Ratio @ $180^\circ \pm 30^\circ$: Difference between the antenna's maximum gain and the maximum gain in the antenna's back lobe over $\pm 30^\circ$ angles.

Cross-polarization Ratio over HPBW (dB): Maximum difference between the co-polarization and cross-polarization gain across the sector's HPBW.

Wind load, Axial: Front loading on the mast at survival wind speed.

Wind load, Side: Side loading on the mast at survival wind speed.

Twisting Moment: Rotational loading on the mast at survival wind speed.