



TRANSFORMING IDEAS INTO FUTURE



ANTENNAS



ACCESSORIES



OUTDOOR
ENCLOSURES



MOUNTING
HARDWARES



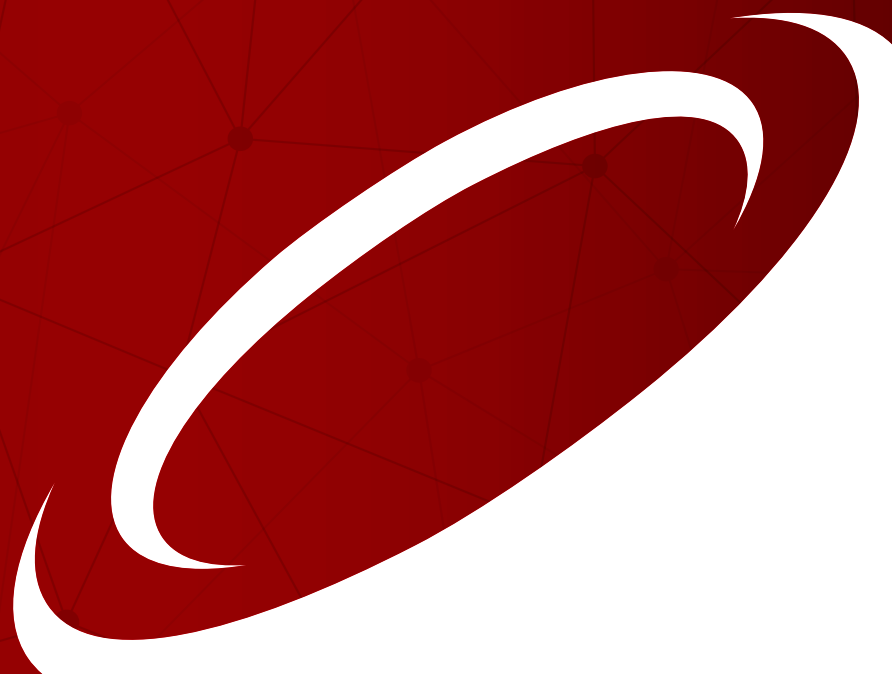
AC/DC UPSs

www.ALGcom.com.br

ALG
com



Technology for professional links



CONTENT

ANTENNAS

5.8 GHz SOLUTIONS

LICENSED BAND SOLUTIONS

ACCESSORIES

OUTDOOR ENCLOSURES

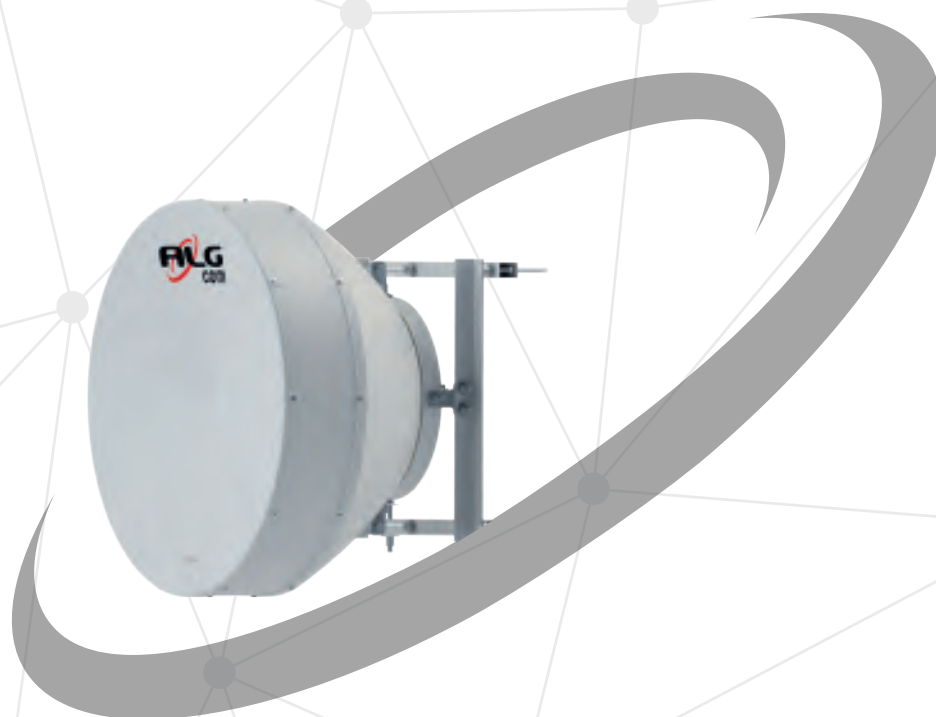
MOUNTING HARDWARES

AC/DC UPSs

ANTENNAS

OPERATING FREQUENCIES

- 0.806 to 2.200 GHz
- 1.425 to 1.535 GHz
- 2.000 to 2.300 GHz
- 2.570 to 2.620 GHz
- 3.700 to 4.300 GHz
- 4.400 to 5.000 GHz
- 4.900 to 5.875 GHz
- 5.250 to 5.875 GHz
- 5.500 to 6.425 GHz
- 6.425 to 7.125 GHz
- 7.125 to 8.500 GHz
- 10.000 to 11.700 GHz





Technology for professional links

Transforming ideas into future

Since 2003, we have sought to bring people together through innovative and sustainable solutions within telecommunications market. We manufacture antennas and accessories, fully designed to increase performance. This concept is reinforced throughout the company, from effective customer service to constant development researches. Our focus is to serve the client on a high-qualified way developing new products with the latest technology. Quality is one of our foundations; we are certified with ISO 9001:2015 and offer a 3 years warranty in all our antennas.



31 distributors

+ 3.000
satisfied
customers

+ 100
products

+ 40.000
links installed

15 years

4 years
ISO 9001
certification

+80.000
manufactured
antennas

STRONG QUALITY POLICY



5.8 GHz SOLUTIONS

ANTENNAS



- Dish Antenna
- Parabolic Shielded Antenna
- Ultra High Performance Parabolic Antenna
- Asymmetrical Horn Antenna
- Wide Band Asymmetrical Horn Antenna



LIGHTNESS

100% structural aluminum



FLEXIBILITY

Complete range of standardized solutions and accessories to meet all your needs



DURABILITY

High durability and very low maintenance requirements



RELIABILITY

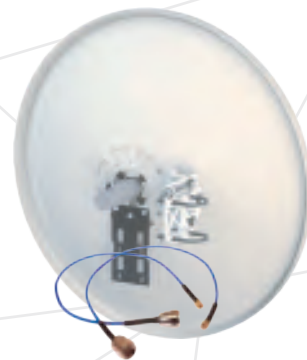
Measurement charts included



ANTENNAS

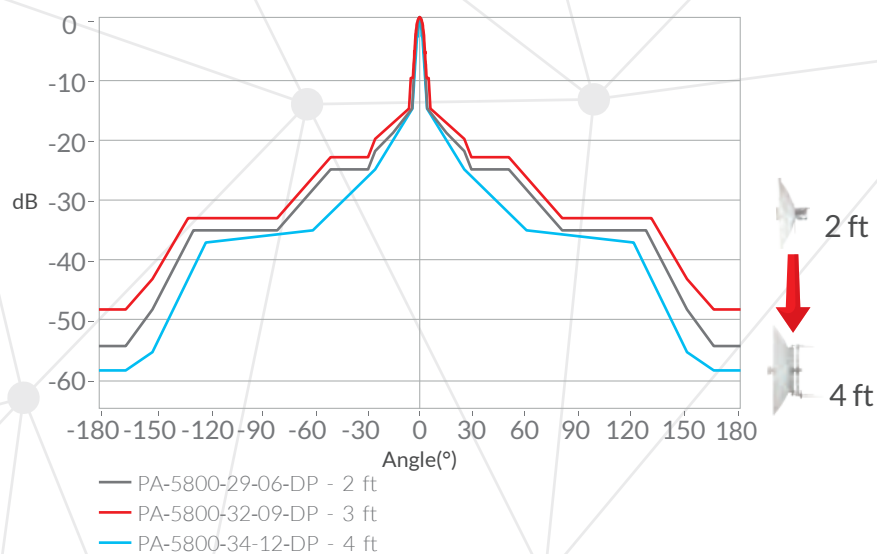
Dish Antenna

Generally used in low interference places, this product has an excellent cost-benefit ratio. It has good bandwidth, is suitable for point-to-point solutions and provides more stable links with maximum throughput over short or long distances.



	PA-5800-22-06-DP-ST	PA-5800-29-06-DP	PA-5800-32-09-DP	PA-5800-34-12-DP
DIAMETER	2 ft	2 ft	3 ft	4 ft
GAIN	29 dBi	29 dBi	32 dBi	35 dBi
FREQUENCY	4.900 GHz to 5.875 GHz	4.900 GHz to 5.875 GHz	4.900 GHz to 5.875 GHz	4.900 GHz to 5.875 GHz
POLARIZATION	Dual (V/H)	Dual (V/H)	Dual (V/H)	Dual (V/H)
ARMORED BOXES	Not compatible	Compatible	Compatible	Compatible
ACCESSORIES	Fixing kit	Pigtails and Fixing kit	Pigtails and Fixing kit	Pigtails and Fixing kit

Radiation Pattern Envelope



Parabolic Shielded Antenna

In high interference places, this antenna offers a higher radiation efficiency due to its lateral shielding. The radome increases life cycle and link performance on rainy days. It provides more stable links with maximum throughput and suppressed secondary lobes at levels below -40 dB of isolation. The antenna can be used with ALGcom's Armored Boxes, guaranteeing protection and isolation for the radio.



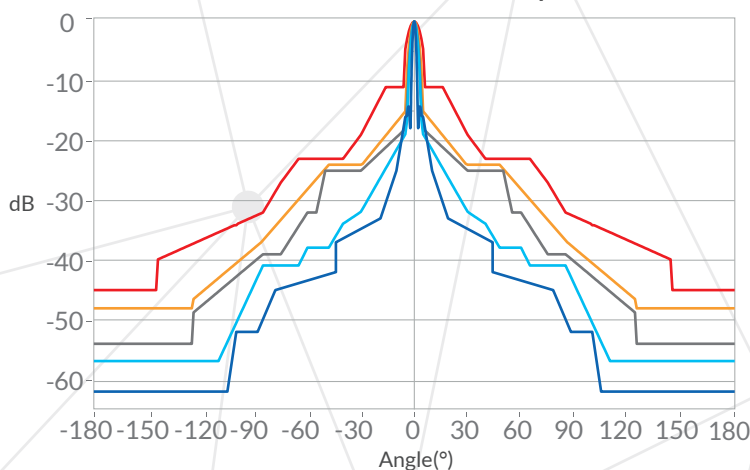
	PS-5800-22-03-DP	PS-5800-29-06-DP	PS-5800-32-09-DP	PS-5800-34-12-DP	PS-5800-37-18-DP
DIAMETER	1 ft	2 ft	3 ft	4 ft	6 ft
GAIN	23.9 dBi	30.1 dBi	33.5 dBi	35.8 dBi	38.2 dBi
FREQUENCY	5.250 GHz to 5.875 GHz	5.250 GHz to 5.875 GHz	5.250 GHz to 5.875 GHz	5.250 GHz to 5.875 GHz	5.250 GHz to 5.875 GHz
POLARIZATION	Dual (V/H) or Slant (+/-45°)	Dual (V/H) or Slant (+/-45°)	Dual (V/H) or Slant (+/-45°)	Dual (V/H) or Slant (+/-45°)	Dual (V/H) or Slant (+/-45°)

	PS-6100-30-06-DP	PS-6100-33-09-DP	PS-6100-35-12-DP	PS-6100-38-18-DP
DIAMETER	2 ft	3 ft	4 ft	6 ft
GAIN	30.3 dBi	33 dBi	35 dBi	38.5 dBi
FREQUENCY	5.500 GHz to 6.425 GHz	5.500 GHz to 6.425 GHz	5.500 GHz to 6.425 GHz	5.500 GHz to 6.425 GHz
POLARIZATION	Dual (V/H) or Slant (+/-45°)	Dual (V/H) or Slant (+/-45°)	Dual (V/H) or Slant (+/-45°)	Dual (V/H) or Slant (+/-45°)



Armored boxes coupling

Radiation Pattern Envelope



- PS-5800-22-03-DP - 1 ft
- PS-5800-29-06-DP - 2 ft
- PS-5800-32-09-DP - 3 ft
- PS-5800-34-12-DP - 4 ft
- PS-5800-37-18-DP - 6 ft
- PS-6100-30-06-DP - 2 ft
- PS-6100-33-09-DP - 3 ft
- PS-6100-35-12-DP - 4 ft
- PS-6100-38-18-DP - 6 ft



Ultra High Performance Antenna

In very high interference places, this is the state-of-the-art antenna, with the highest shielding in the market. The ultra-efficient shield combined with the RF absorber foam and a new lens technology guarantee suppressed secondary lobes at levels below -50 dB. It also has robust mounting hardware that is a reference in the telecom segment.



	PS-5800-29-06-DP-UHP	PS-5800-32-09-DP-UHP
DIAMETER	2 ft	3 ft
GAIN	29.5 dBi	32.5 dBi
FREQUENCY	5.250 GHz to 5.875 GHz	5.250 GHz to 5.875 GHz
POLARIZATION	Double (V/H) or Slant (+/-45°)	Double (V/H) or Slant (+/-45°)

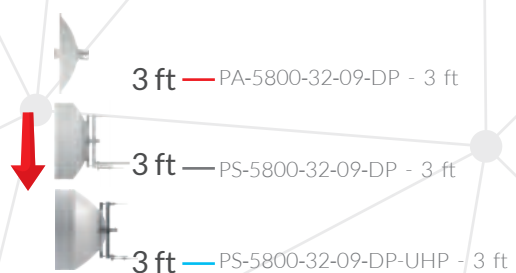
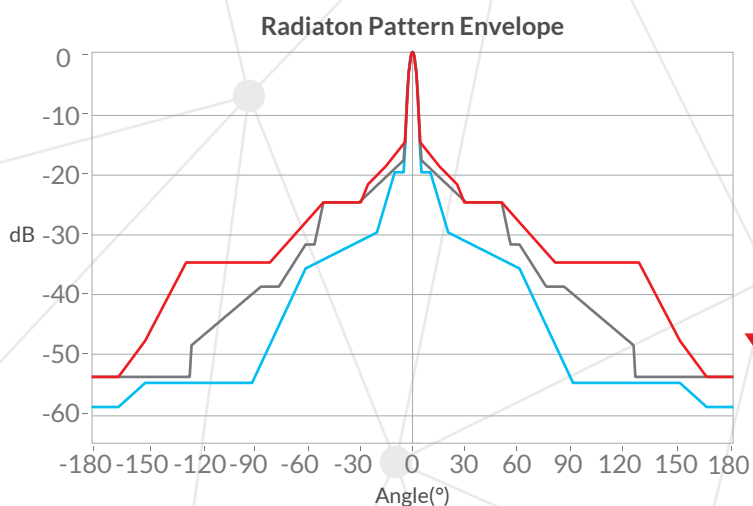
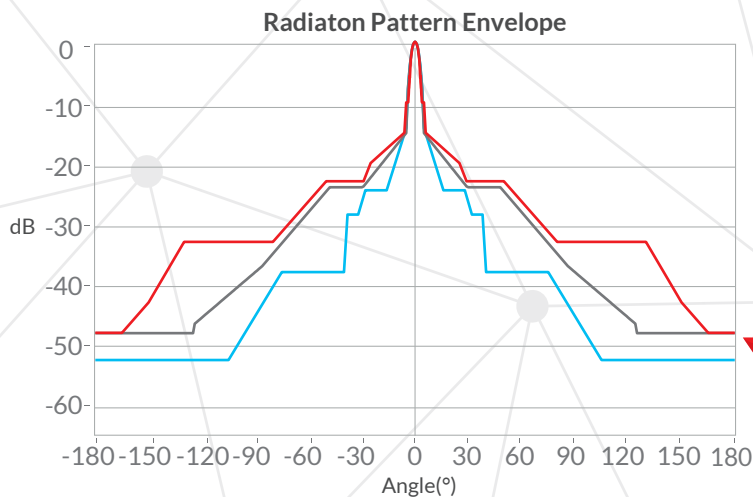


SLANT POLARIZATION +/- 45°

Greater flexibility in double polarized connections with possibility of V / H or +/- 45° installation



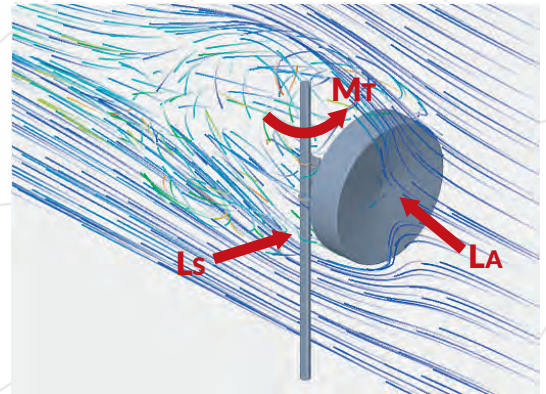
Comparison between models



Wind Load

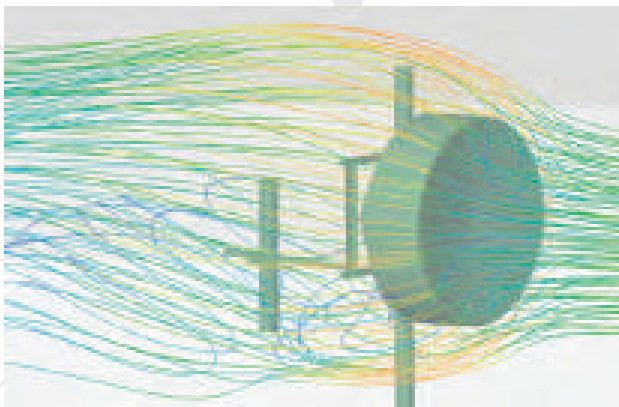
SIZE	MODEL	(LA) FRONT	(N)	(Ls) SIDE	(N)	(MT) TORSOR	(Nm)
		110 km/h 68 mph	200 km/h 124 mph	110 km/h 68 mph	200 km/h 124 mph	110 km/h 68 mph	200 km/h 124 mph
1 ft	UHP	90.6	300.0	38.3	126.8	16.3	54.0
		90.6	300.0	36.6	121.2	16.3	54.0
2 ft	PA	291.1	964.0	86.0	284.7	52.4	173.5
	PS	266.3	881.9	132.3	438.2	47.9	158.7
	UHP	266.3	881.9	105.0	347.8	105.2	348.4
3 ft	PA	533.5	1766.7	151.4	501.2	96.0	318.0
	PS	476.2	1576.8	278.6	922.4	151.0	499.8
	UHP	476.2	1576.8	262.6	869.5	188.1	622.8
4 ft	PA	883.0	2923.7	175.9	582.4	308.2	1020.4
	PS	889.9	2946.6	380.0	1258.2	310.6	1028.4
6 ft	PS	1970.2	6523.6	1064.8	3525.8	535.9	1774.4

PA = Dish Antenna
PS = Parabolic Shielded Antenna
UHP = Ultra High Performance Antenna

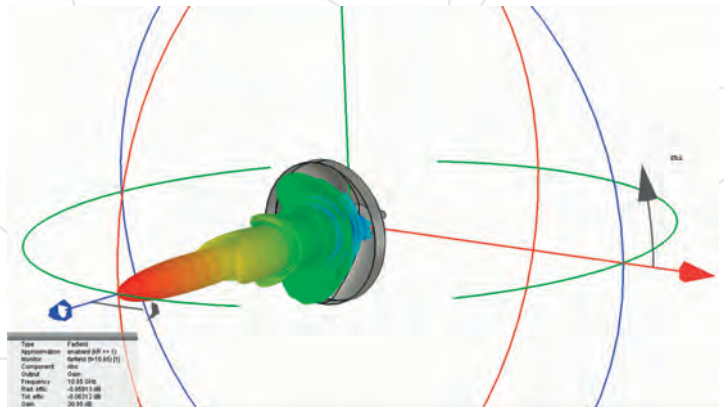


LA = Axial Load (N)
Ls = Side Load (N)
MT = Twisting Moment (Nm)
110 km/h = Operation Wind
200 km/h = Survival Wind

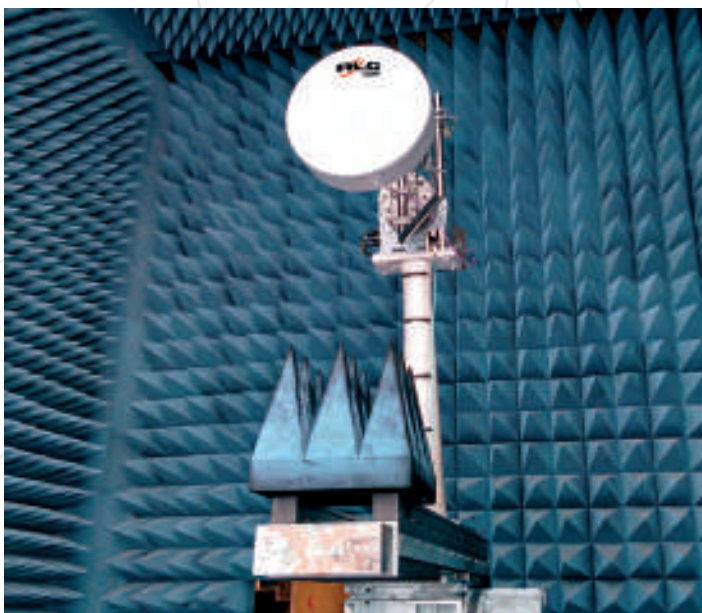
Computation Fluid Dynamics Analysis



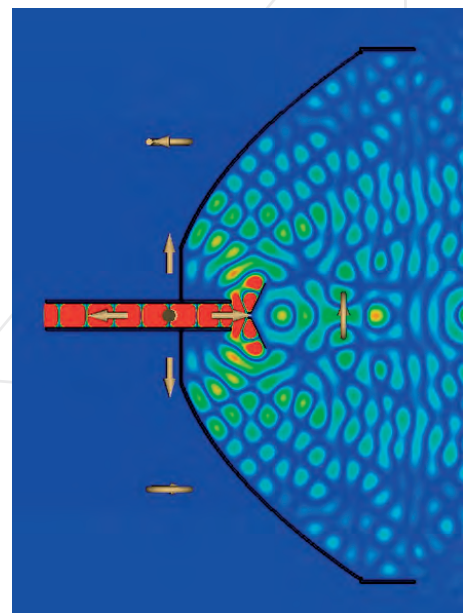
3D Radiation Pattern Simulation



Radiation Pattern Measurement



Electric Field Simulation



Asymmetrical Horn Antenna

It provides double coverage with the same gain as conventional panels. It has excellent shielding properties that ensure secondary lobes reduction and high isolation against noise.

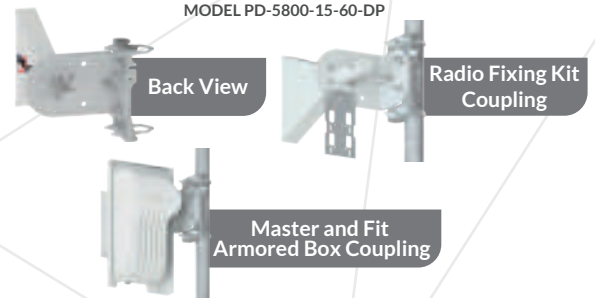


	PD-5800-15-60-DP	PD-5800-15-60-DP-ST5	PD-5800-15-60-D-STN
GAIN	15 dBi	15 dBi	15 dBi
FREQUENCY	5.250 GHz to 5.875 GHz	5.250 GHz to 5.875 GHz	5.250 GHz to 5.875 GHz
POLARIZATION	Dual (V/H)	Dual (V/H)	Dual (V/H)
ANGLE	90°	90°	90°
CONNECTION	SMA Female Reverse	SMA Female Reverse	N Female
ARMORED BOXES	Compatible	Not compatible	Not compatible

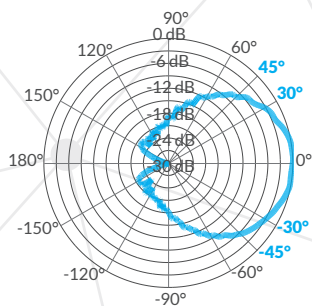


COMPATIBLE ACCESSORIES

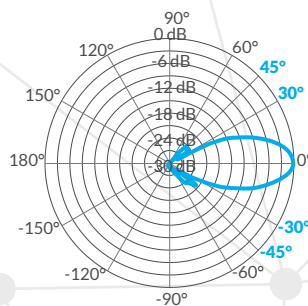
MODEL PD-5800-15-60-DP



HORIZONTAL RADIATION PATTERN



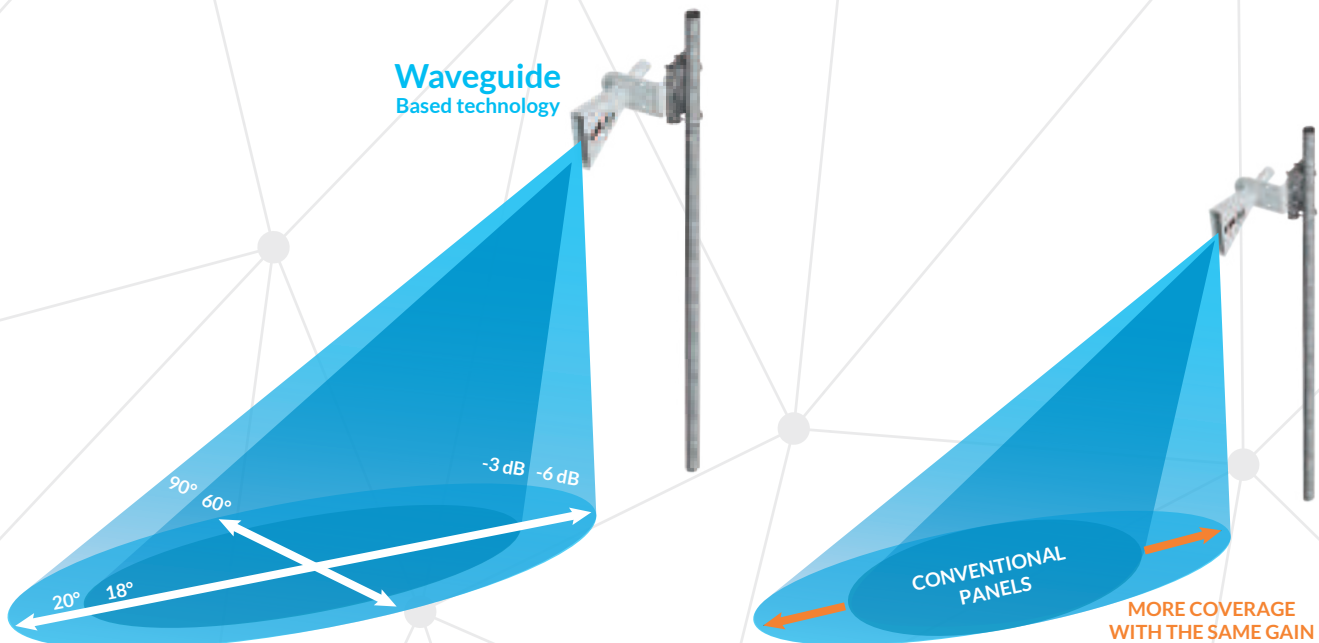
VERTICAL RADIATION PATTERN



FREQUENCY REUSE



Waveguide
Based technology



MORE COVERAGE
WITH THE SAME GAIN

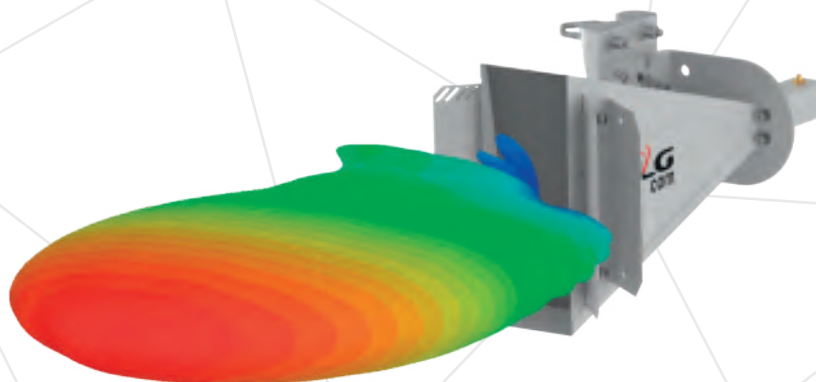
Wide Band Asymmetrical Horn Antenna

The Wide Band Asymmetrical Horn Antenna offers high gain, high vertical beamwidth and incredible secondary lobes reduction, compatible with the ETSI EN 302 326-3 SS2 performance class. They provide excellent coverage with the best signal-to-noise ratio (SNR), increase the immunity of the network against noise and interference. They also allow the deployment of more equipment in the same site. Antennas have been designed and tested from 4.9 to 6.425 GHz ensuring all diagram, isolation and VSWR properties throughout this band. This allows its use in a very wide range of applications and it's also compliant with standards of international organizations like FCC and ETSI.

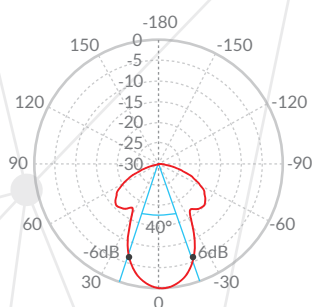


PD-5800-19-30-DP-UWB

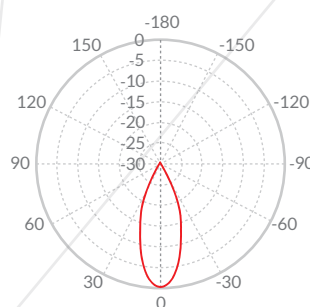
GAIN	19 dBi
FREQUENCY	4.900 GHz to 6.425 GHz
POLARIZATION	Double (V/H)
ANGLE	40°
CONNECTION	SMA Female Reverse



HORIZONTAL RADIATION PATTERN
5.6 GHz



VERTICAL RADIATION PATTERN
5.6 GHz



4900
4940
4990

5250

5350

5470

5725

5850

6000

6400
6425

Great interference rejection

The Asymmetrical Horn Antenna and Wide Band Asymmetrical Horn Antenna have enhanced radiation pattern that mitigates interference emission and reception.

The tables below exemplify the low **INTERFERENCE (I)** between antennas using the **same channel**.

Asymmetrical Horn Antenna
PD-5800-15-60-DP

Horizontal

d(m) θ (°) RP(dB) I (dBm)

1.0	110	-21.99	-54.39
	120	-24.39	-59.19
	130	-29.19	-68.79

Vertical

h(m) RP(dB) I (dBm)

1.0	-39.33	-89.07
1.5	-39.33	-92.59
2.0	-39.33	-95.09

Wide Band Asymmetrical Horn Antenna
PD-5800-19-30-DP-UWB

Horizontal

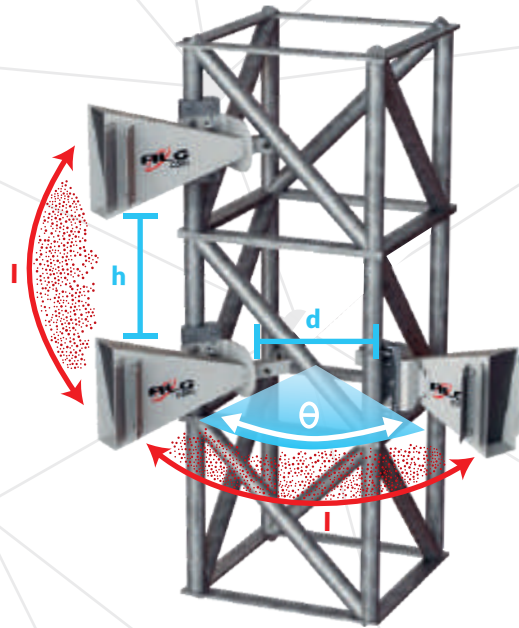
d(m) θ (°) RP(dB) I (dBm)

1.0	110	-39.33	-85.37
	120	-38.61	-83.61
	130	-41.56	-89.83

Vertical

h(m) RP(dB) I (dBm)

1.0	-31.28	-69.26
1.5	-31.28	-72.78
2.0	-31.28	-75.28

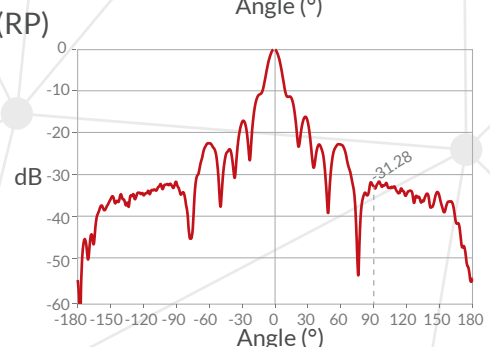
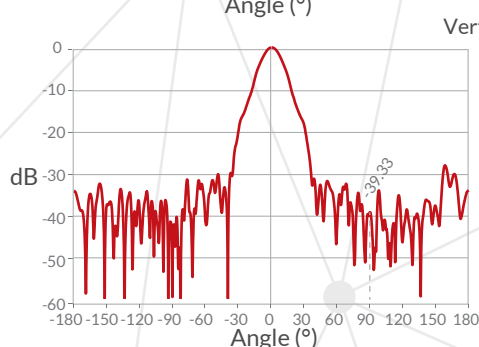
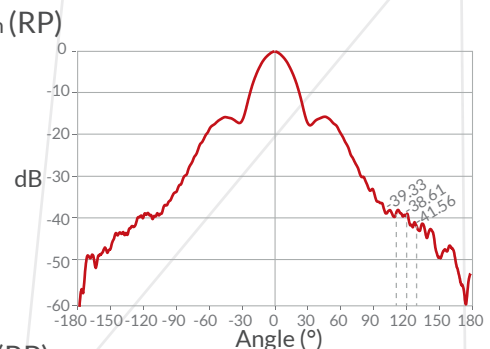
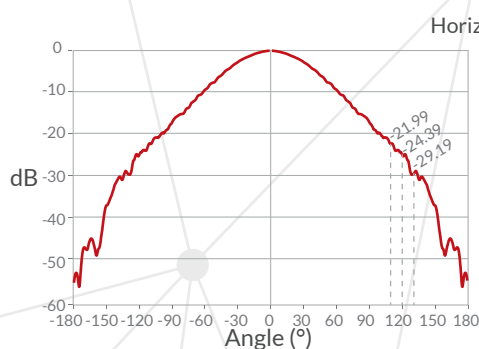


The tables above were calculated for 5.6 GHz with the following expression:

$$I = P + 2 (G + RP(\theta)) - FSPL$$

P = Power-emission (dBm) - 22 dBm in this example
G = Antenna gain (dBi)
RP (θ) = Radiation pattern value at angle θ (dB)
FSPL = Free space loss at distance D or H

θ = Horizontal angle between antennas (°)
d = Horizontal distance between antennas (m)
h = Vertical distance between antennas (m)
I = Interference in dBm



LICENSED BAND SOLUTIONS

ANTENNAS

- Microwave
- Grid Antenna
- Directional Broadband Antenna



ROBUSTNESS

Durable materials and corrosion resistance.



FLEXIBILITY

Customizable flange for various waveguide radio models.



HIGH PERFORMANCE

High performance links for licensed frequencies.



ANTENNAS

Microwave (Licensed Links)

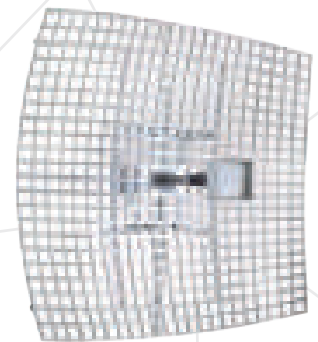
With a greater radiation efficiency due to its lateral shielding and RF absorber foams aligned with a special lens technology, these antenna models offers a significant reduction of secondary lobes. It was developed to be a high performance antenna with a compact size and a smaller wind area.



PS-4000-26-06-DP PS-4000-29-09-DP PS-4000-31-12-DP PS-4000-34-18-DP																			PS-4800-27-06-DP PS-4800-30-09-DP PS-4800-32-12-DP				PS-6800-31-06-SP PS-6800-31-06-DP PS-6800-34-09-SP PS-6800-34-09-DP PS-6800-36-12-SP PS-6800-36-12-DP PS-6800-38-18-SP PS-6800-38-18-DP				PS-7800-32-06-SP PS-7800-32-06-DP PS-7800-35-09-SP PS-7800-35-09-DP PS-7800-37-12-SP PS-7800-37-12-DP PS-7800-39-18-SP PS-7800-39-18-DP				PS-10900-30-03-DP PS-10900-34-06-DP PS-10900-37-09-DP		
DIAMETER	2 ft	3 ft	4 ft	6 ft	2 ft	3 ft	4 ft	2 ft	3 ft	4 ft	6 ft	2 ft	3 ft	4 ft	6 ft	1 ft	2 ft	3 ft															
GAIN	27.5 dBi	30 dBi	32.2 dBi	35.4 dBi	28 dBi	30.6 dBi	33 dBi	29.3 dBi	34.6 dBi	36.6 dBi	39.1 dBi	31.7 dBi	35.6 dBi	36.7 dBi	40.6 dBi	30 dBi	34 dBi	37 dBi															
FREQUENCY	3.700 GHz to 4.300 GHz				4.400 GHz to 5.000 GHz				6.425 GHz to 7.125 GHz				7.125 GHz to 8.500 GHz				10.000 GHz to 11.700 GHz																
POLARIZATION	Dual (V/H)				Dual (V/H)				Single (V/H) and Dual (V/H)				Single (V/H) and Dual (V/H)				Single (V/H) and Dual (V/H)																

Grid Antenna

It was developed with innovative and patented technology in the construction of the reflection surface and the radiating element, resulting in an unmatched mechanical precision in the market. It has the best radiation efficiency, with perfect symmetry in all co-polar and cross-polar vectors in the reflection over the parabolic surface. Thus, it reaches a value higher than -30 dB cross-polar isolation (+/- 1 dB angle), which is an innovation in the market for low-frequency radios.



	PV-1500-23-12-SP PV-1500-23-12-DP		PV-1500-27-20-SP PV-1500-27-20-DP		PV-1500-31-30-SP PV-1500-31-30-DP		PV-1500-33-40-SP PV-1500-33-40-DP	
DIAMETER	4 ft		6.5 ft		9.8 ft		13 ft	
GAIN	23 dBi		27 dBi		31 dBi		33 dBi	
FREQUENCY	1.425 GHz to 1.535 GHz		1.425 GHz to 1.535 GHz		1.425 GHz to 1.535 GHz		1.425 GHz to 1.535 GHz	
POLARIZATION	Single (V/H) and Dual (V/H)		Single (V/H) and Dual (V/H)		Single (V/H) and Dual (V/H)		Single (V/H) and Dual (V/H)	

	PV-2150-25-12-SP PV-2150-25-12-DP		PV-2150-29-20-SP PV-2150-29-20-DP		PV-2150-33-30-SP PV-2150-33-30-DP		PV-2150-35-40-SP PV-2150-35-40-DP	
DIAMETER	4 ft		6.5 ft		9.8 ft		13 ft	
GAIN	25.2 dBi		29.3 dBi		33.3 dBi		35.2 dBi	
FREQUENCY	2.000 GHz to 2.300 GHz		2.000 GHz to 2.300 GHz		2.000 GHz to 2.300 GHz		2.000 GHz to 2.300 GHz	
POLARIZATION	Single (V/H) and Dual (V/H)		Single (V/H) and Dual (V/H)		Single (V/H) and Dual (V/H)		Single (V/H) and Dual (V/H)	

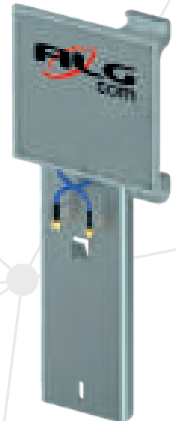
CPE 2.5 GHz

Innovative solution with outstanding performance for end customer at 2.5 GHz. Developed exclusively for Cambium ePMP 1000 Radio, it has a smart layout, resulting in a small antenna, lightweight and robust with great cost-benefit. It comes with radio mounting kit and does not require additional jumpers (pigtails) making the installation much easier.



PD-2500-10-40-DP

GAIN	9.4 dBi
FREQUENCY	2.570 to 2.620 GHz
POLARIZATION	Dual (V/H)



DIRECTIONAL BROADBAND ANTENNA

The Directional Broadband Antennas (Log periodic) was specially developed to provide greater versatility for cellular coverage projects for multiple operators, operating across the entire range of frequencies of cellular telephony.



PS-880-1900-10-00

GAIN	9 dBi
FREQUENCY	806 MHz to 2200 MHz
POLARIZATION	Single (V)



AC/DC UPSs

WISP's frequently have problems with high interference and noise, not knowing they are the ones creating it for themselves. Compact and easy to install, the AC/DC UPS features an intelligent charger battery with 3 stages. It provides protection against surges, power faults, sags and grid fail. It's also available model with SNMP protocol, for monitoring and management.



DURABILITY

High durability and very low maintenance requirements



TECHNOLOGY

Smart charger with 3 stages



PROTECTION

Against surges, falls, sags, noises and electrical faults



AC/DC UPSs

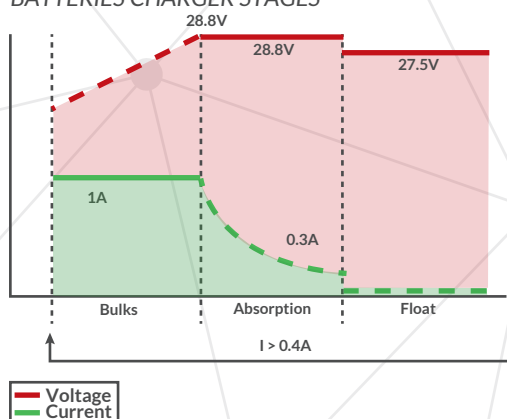


	12V/10A/1A	24V/10A/1A	12V/8A/3A	24V/8A/3A	-48V/10A
OUTPUT VOLTAGE	12V	24V	12V	24V	-48V
OUTPUT POWER	120W/10A	240W/10A	120W/8A	240W/8A	540W/10A
CHARGER CURRENT	1A	1A	3A	3A	Configurable 1-5A

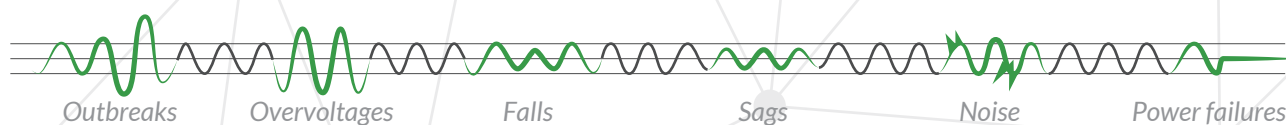


	12V/10A/1A SNMP	24V/10A/1A SNMP	12V/8A/3A SNMP	24V/8A/3A SNMP	-48V/10A SNMP
OUTPUT VOLTAGE	12V	24V	12V	24V	-48V
OUTPUT POWER	120W/10A	240W/10A	120W/8A	240W/8A	540W/10A
CHARGER CURRENT	1A	1A	3A	3A	Configurable 1-5A

BATTERIES CHARGER STAGES



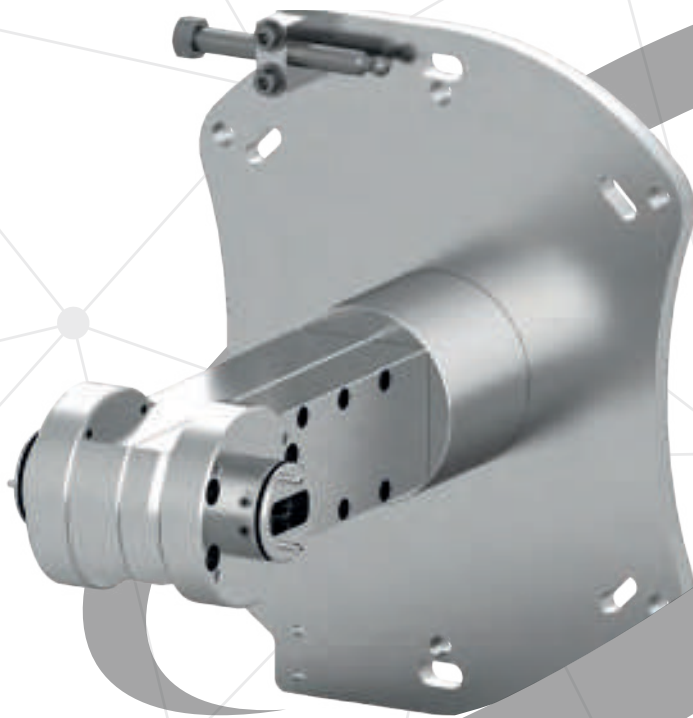
PROTECTION AGAINST



ACCESSORIES SOLUTIONS

ACCESSORIES

- OMT's
- Waveguide Flanges
- High Performance Jumpers
- Fixing Kits
- Armored Boxes



PROTECTION

Weather proof and corrosion resistance.



DURABILITY

High durability and very low maintenance requirements



FLEXIBILITY

Compatible with various models to meet all your needs



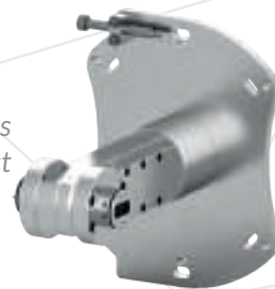
HIGH PERFORMANCE

High Performance Links



OMT for dual polarization

It is the accessory for upgrading a single polarization to dual polarization link. It has a fastening system with fine adjustment of cross-polar discrimination (XPD) and direct coupling for several radio models or flexible waveguide connection.



Waveguide Flange

Complete and customizable adapters licensed band radios for single and dual polarization links.



High Performance Jumper

Product 100% manufactured and tested by ALGcom with strict quality control. Our cable is semi-rigid with tin finish, providing excellent shielding properties. It has the lowest VSWR in the market and less than 0.8 dB of attenuation. They are sold in pairs with measurement test report.



PT-5800-N-N-05 PT-5800-S-N-05 PT-5800-S-S-05 PT-5800-S-M-05 PT-5800-S-N-10 PT-5800-N-N-15 PT-5800-S-S-XX PT-5800-S-M-05 PT-5800-S-M-XX

LENGHT	0.5 m	0.5 m	0.5 m	0.5 m	1.0 m	1.5 m	Special for radios MikroTik (with box) and Ubiquiti Rocket	0.5 m	Special for Intelbras radio
CABLE	SM141	SM141	SM141	SM141	SM141	SM141	SM141	SM141	SM141
CONNECTOR 1	N male	SMA reverse male	SMA reverse male	SMA reverse male	SMA reverse male	N male	SMA reverse male	SMA reverse male	SMA reverse male
CONNECTOR 2	N male	N male	SMA reverse male	MMCX	N male	N male	SMA reverse male	MMCX	N male

Fixing Kit

Lightweight and corrosion resistant, radio Fixing Kits are 100% aluminum and are compatible with different radio models. They allow direct mounting to the antenna, making installation and equipment maintenance easy.

COMPATIBLE RADIOS

MikroTik Routerboards
Netbox 5
NetMetal 5
Intelbras APC-5M
Ubiquiti Rocket

COMPATIBLE ANTENNAS

Dish Antenna
Parabolic Shielded Antenna
UHP Antenna
Asymmetrical Horn Antenna
Wide Band Asymmetrical Horn Antenna



Fixing Kit
PA-5800-29-06-ST

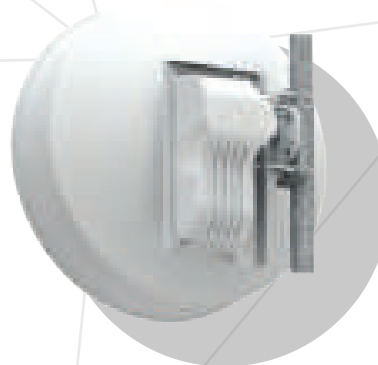


Armored Box

They provide RF protection against external noise and extend the equipment life span.



	FIT CB-31-20-14-AP	MASTER CB-44-24-14-AP-A
MATERIAL	Aluminum	Aluminum
COMPATIBLE RADIOS	MikroTik RouterBoards (RB411, RB911, RB912, RB922) and Intelbras	MikroTik RouterBoards, Netbox and Netmetal 5, Intelbras APC5m and Ubiquiti Rocket



Compatible with

- Dish Antenna - (page 6)
- Parabolic Shielded Antenna - (page 7)
- Ultra High Performance Antenna - (page 8)
- Asymmetrical Horn Antenna - (page 10)
- Wide Band Asymmetrical Horn Antenna - (page 11)



FIT Armored Box
CB-31-20-14-AP



MASTER Armored Box
CB-44-24-14-AP-A

OUTDOOR ENCLOSURES

- Galvanized steel
- Aluminum



SHIELDING

Protection against ingress of water, dirt and insects



FAN

Excellent air circulation system through exhaustion



SAFETY

Anti-vandalism protection with metal locking hinges and locks



ARTICULATION

Easy cable installation and maneuvering



FLEXIBILITY

Various steel and aluminum models, adjustments and options to meet all your needs



DETAILS

Models with isolated battery compartment for greater protection

Adjustable rails for height and depth (19" separation)

Cable pass that prevents entry of water, dirt, insects and facilitates maneuvering of cables

Anti-theft system with double locking metal mitts, and the possibility of using padlock

Protection against entry of water, dirt and insects in the exchange of air with external environment

Adjustable trays in height and depth

OPTIONALS

Fan kit and thermostat for temperature control

Universal mounting




Automotive rubber for door sealing

GALVANIZED STEEL



STANDARD



- Universal Pole/Wall/Mast Holder included

		
GO-05-19-40-AC-STE	GO-10-19-40-AC-ST	GO-24-19-50-AC-ST
5U x 19" x 315 mm 100 Liters 20.5 kg	10U x 19" x 315 mm 100 Liters 21 kg	24U x 19" x 500 mm 350 Liters 43 kg



STANDARD WITH BATTERY COMPARTMENT

- Isolated space for batteries
- Pole/Wall/Mast mounting hardware (6U) or floor mounting hardware (12U) included




		
GO-06-19-50-AC-STB	GO-12-19-50-AC-STB	Battery Compartment
6U x 19" x 500 mm 58 Liters 31 kg	12U x 19" x 500 mm 155 Liters 34.7 kg	600 x 610 x 540 mm 53 Liters 21 kg

ALUMINUM



STANDARD


- Universal Pole/Wall/Mast Holder included

		
GO-06-19-50-AL-ST	GO-08-19-50-AL-ST	GO-10-19-58-AL-ST
6U x 19" x 500 mm 82 Liters 11 kg	8U x 19" x 500 mm 105 Liters 11.5 kg	10U x 19" x 500 mm 127 Liters 14 kg



FOR POLE



- Shorter depth to install on poles, facilitates access to equipment
- Universal Pole/Wall/Mast Holder included


GO-12-19-35-AL-PO
12U x 19" x 350 mm 90 Liters 12.5 kg



STANDARD WITH BATTERY COMPARTMENT


- Isolated space for batteries
- Floor mounting hardware included

	
GO-12-19-50-AL-STB	Battery Compartment
12U x 19" x 500 mm 155 Liters 27 kg	600 x 610 x 540 mm 53 Liters 21 kg



CONTROL PANEL

- It allows total customization for equipment fixing and cable pass


GQ-50-44-20-AL-ST
495 x 395 x 170 mm 33 Liters 5.5 kg

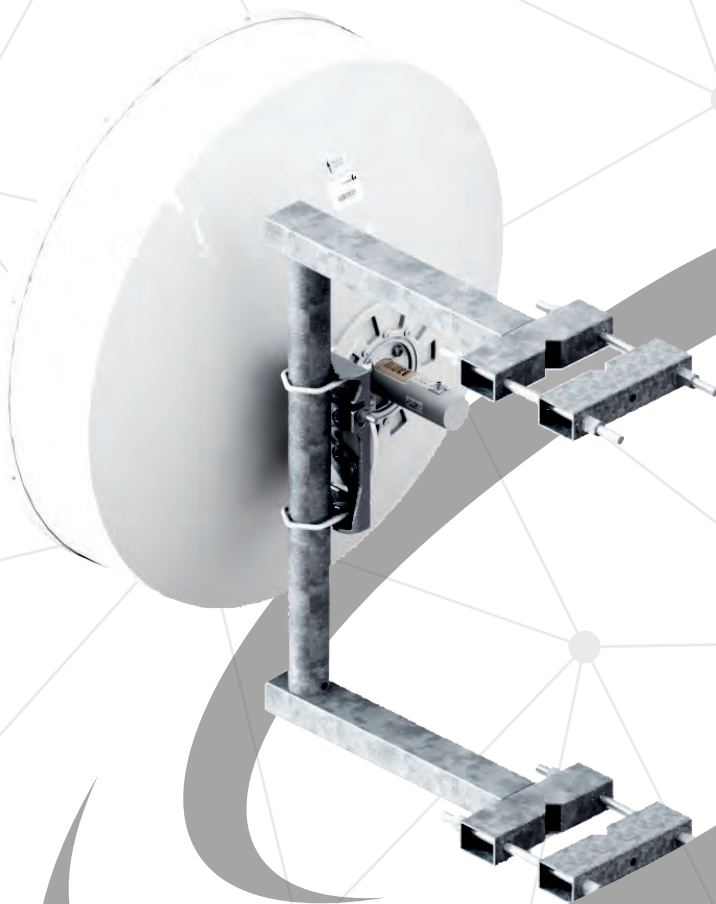
MOUNTING HARDWARE

- Galvanized Steel
- Aluminum



Customizable and easily adjustable, they were designed to suit all types of tower. They combine lightness, robustness and a modern and innovative design.

Universal Clip



VERSATILITY

Various models with universal fittings for different profiles
No additional cutting or drilling required



RESISTANCE

100% structural aluminum: stronger and lighter than steel
Protected against corrosion



ECONOMY

Compact packaging that facilitates logistics and reduces the cost of transportation



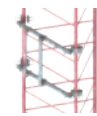
PRACTICAL

Reduced number of components make installation quick and easy



GALVANIZED STEEL

Designed with high strength materials and hot dip galvanization, they guarantee stability and protection against corrosion even in tough environments.



	SCS-04-06-2	SCA-03-10-2	SCA-03-10-4	SFE-XX-06-2	SFA-XX-15-4	SFA-XX-15-4-PP	SPA-04-06-2	SCI-04-15-4-PP
MATERIAL	Hot dipped galvanized	Hot dipped galvanized	Hot dipped galvanized	Hot dipped galvanized	Hot dipped galvanized	Hot dipped galvanized	Hot dipped galvanized	Hot dipped galvanized
POLE DIAMETER	2" 50.8 mm	2" 50.8 mm	4" 101.6 mm	2" 50.8 mm	4" 101.6 mm	4" 101.6 mm	2" 50.8 mm	4" 101.6 mm
WEIGHT	9.5 kg	17 kg	19 kg	10 kg 11 kg	67 kg 75 kg 82 kg 96 kg 140 kg	85 kg 92 kg 99 kg 114 kg 157 kg	6.2 kg	57 kg

ALUMINUM

Designed in marine aluminum alloy, they are more resistant and light than steel. They offer more protection against corrosion with compact packaging that reduces logistics costs.



	SCA-03-03-2	SCA-05-10-3	SFA-04-10-3	SPA-04-10-2	SPA-05-15-3	SRT-00-2000-2	SRT-00-3000-4
MATERIAL	Marine Aluminum Alloy	Marine Aluminum Alloy	Marine Aluminum Alloy	Marine Aluminum Alloy	Marine Aluminum Alloy	Marine Aluminum Alloy	Marine Aluminum Alloy
POLE DIAMETER	1.3/4" 44.45 mm	3" 76.2 mm	3" 76.2 mm	2" 50.8 mm	3" 76.2 mm	2" 50.8 mm	4" 101.6 mm
WEIGHT	3 kg	4.5 kg	9 kg	2.2 kg	4.2 kg	15 kg	28 kg



COMPLETE LINE IN
TELECOMMUNICATIONS SOLUTIONS



FOR MORE INFORMATION
Contact us

+55 54 3201.1903 | sales@algcom.com.br

www.ALGcom.com.br





Get to know our solutions for telecommunications!

