



DATASHEET

AW3625

Common Name- 2x2 MIMO - Bands 42, 43 & 48 - Small Cell Omni with MET

3300-3800MHz	2	MET	8.5	360°
Frequency	Ports	Tilt	Gain	Beamwidth

PRODUCT INFORMATION

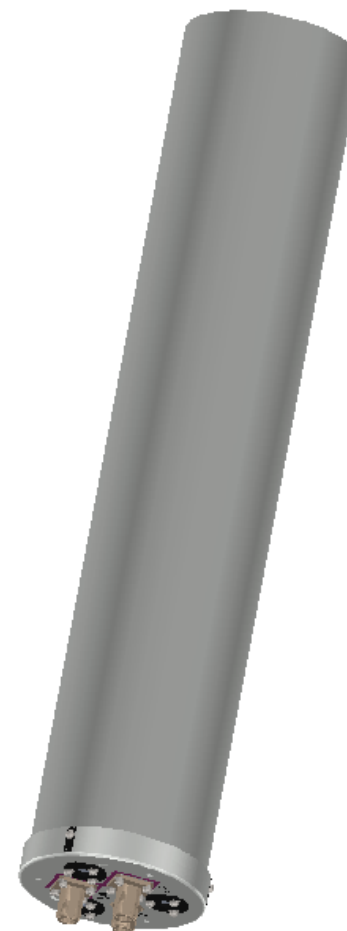
This product was developed to offer a Tri-Sector pseudo omni solution with independent tilt control on each of the three sectors across Bands 42/43 in a small form factor canister.

APPLICATION

Alpha Wireless pseudo omni antenna provides 360° coverage whilst in an ultra-compact radome design. The wide-band antenna is designed to be installed in urban environment where low visual impact is required. There are a number of mounting options available making deployments on lamp posts, utility poles, walls and other vertical structures possible. The 2 port antenna provides 2X2 MIMO for improved data throughput with electrical variable tilt for maximum optimization.

STANDARD & CERTIFICATIONS

Certification	BS EN ISO 9001:2015
---------------	---------------------



FEATURES

- Wide-band antenna for 3GPP bands 42, 43 & 48.
- Optimized Pseudo omni with reduced azimuth ripple
- Slim monopole design to reduce wind loading
- Independent RET control for each array (x3)

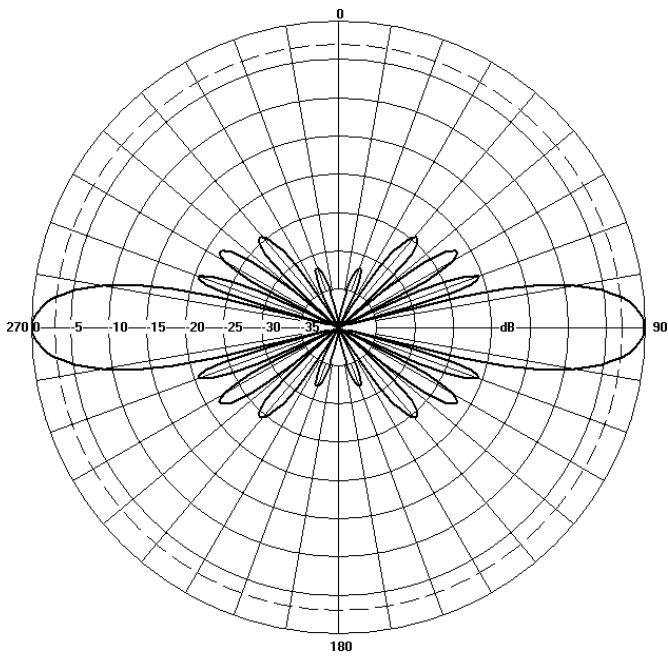
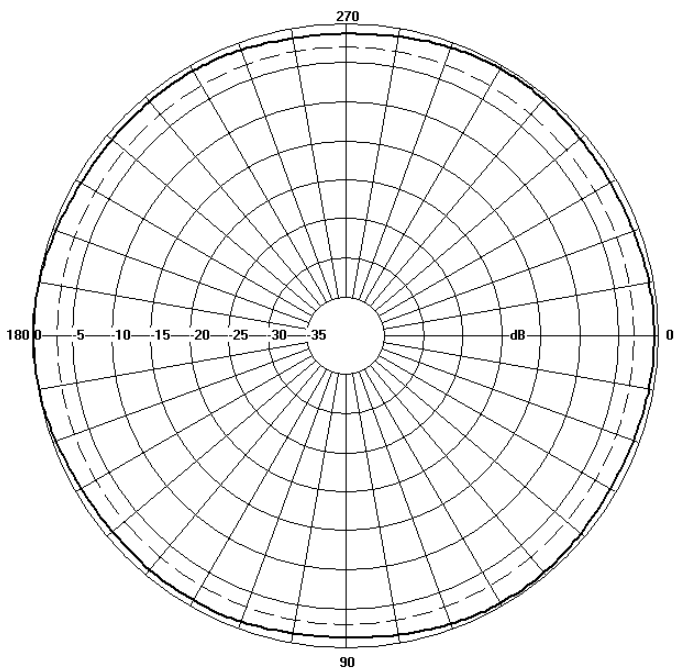
The parameters in this specification follow the definitions and recommendations per NGMN P-Basta, Release 9.6.



TECHNICAL SPECIFICATION

Electrical Specifications		
Frequency Range	MHz	3300 - 3800MHz
Polarisation	Degree	+/- 45° Slant Linear
Gain	dBi	8.5
Azimuth Beamwidth	Degree	360°
Elevation Beamwidth	Degree	12°
Electrical Downtilt	Degree	T0° - T10°
Electrical Downtilt Deviation	Degree<	1°
Impedance	Ohms	50
VSWR	<	1.5
Return Loss	dB>	14
Isolation	dB>	25
Upper Sidelobe Suppression, Peak to 20°	dB>	16
Cross-Polar Discrimination	dB>	12
Maximum Effective Power Per Port	W	50

Radiation Pattern Files



Azimuth

Elevation

For radiation pattern files, please login at www.alphawireless.com

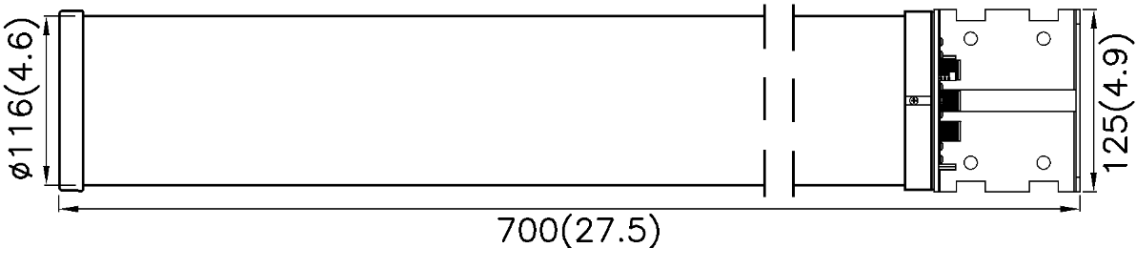
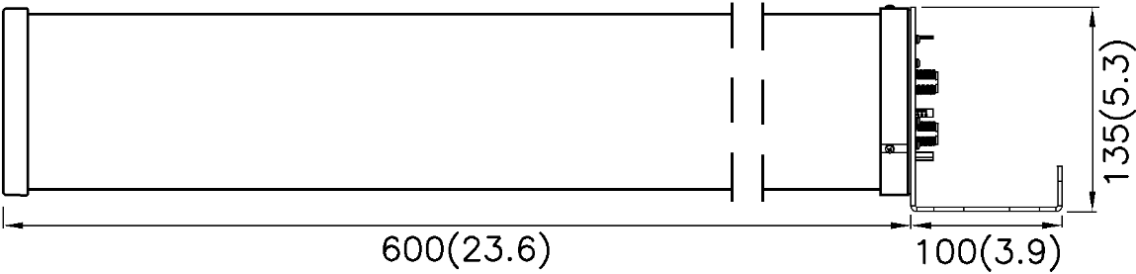
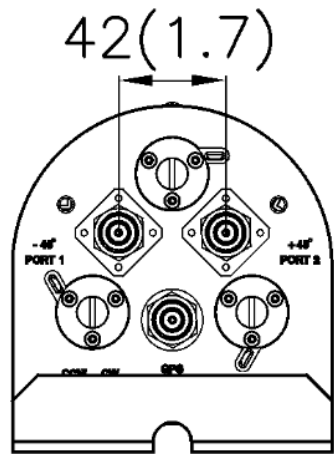


TECHNICAL SPECIFICATION

Mechanical Specifications		
Dimensions	mm (in)	700 (27.5) x 125 (4.9) - (L x Ø)
Packing Size (LxWxD)	mm (in)	770 (30.3) x 190 (7.4) x 250 (9.8)
Net Weight (antenna)	kg (lb)	3 (6.6)
Net Weight (mount)	kg (lb)	2 (4.4)
Shipping Weight	kg (lb)	6 (13.2)
Connector Type (Female)	-	N Type
Connector Quantity	-	2
Connector Position	-	Bottom
Windload Frontal (at Rated Wind Speed: 150km/h)	N (lbf)	80 (18)
Windload Lateral (at Rated Wind Speed: 150km/h)	N (lbf)	80 (18)
Survival Wind Speed	km/h (mph)	200 (125)
Radome Material	-	UV-Stabilised PVC
Radome Colour	RAL	7035
Product Compliance Environmental	-	RoHS
Lightning Protection	-	DC Grounded
Cold Temperature Survival	°C (°F)	-40 (-40)
Hot Temperature Survival	°C (°F)	70 (158)

Mechanical Illustration

All measurements are in mm (in)

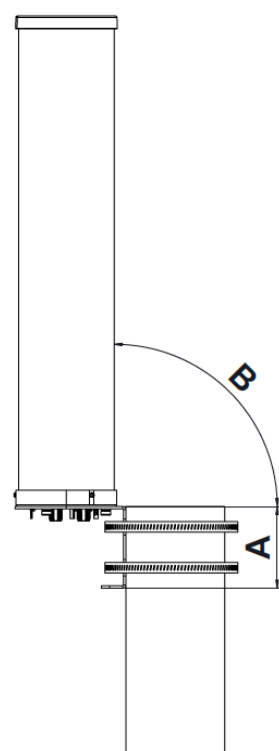
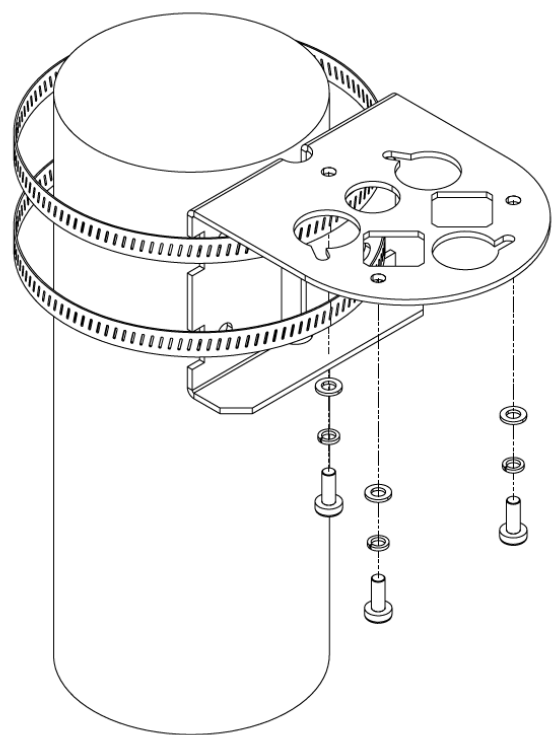




TECHNICAL SPECIFICATION

Mounting Bracket Kit

CL-V-127 (Mounting Kit included with Antenna)



Mounting Kit Tilt Range	Mounting Kit Material	Mounting Kit Pole Diameter
0°	Stainless Steel	N/A

ORDERING INFO

AW3625-M-N-G Manual Electrical Tilt (MET) with N type Connectors

Enquiries

Ireland
Ashgrove Business Centre,
Ballybrittas, Portlaoise, Ireland
Post code: R32 DT0A
sales@alphawireless.com
+353 57 86 33847

USA
11322 W 79th St, Lenexa, KS
66214, USA
sales@alphawireless.com
+1 913 279 0008

Alpha Wireless



DISCLAIMER

The information in this document is provided solely regarding Alpha Wireless products. The information is not a guarantee of performance or characteristics. Alpha Wireless reserves the right to modify, change, amend, improve or make corrections to this document and its products, at any time and its sole discretion without prior written consent or notice. No license to any intellectual property rights is granted or implied under this document. Alpha Wireless disclaims warranties and liabilities of any kind including non-infringement of intellectual property rights of any third party.
© Alpha Wireless Limited 2014