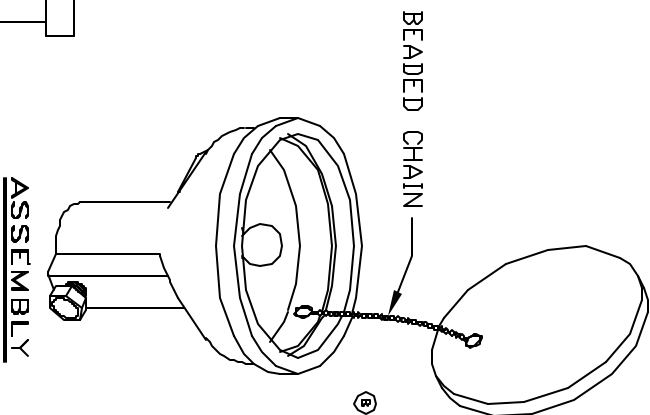
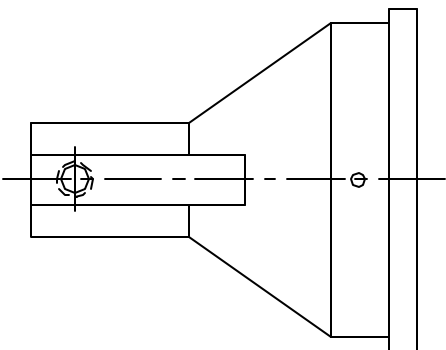


FLOOR GROUND RECEPTACLE



APPROVED

☐ AS DRAWN: \_\_\_\_\_

☐ AS NOTED: \_\_\_\_\_

DATE: \_\_\_\_\_

THIS DOCUMENT AND THE CONTENTS THEREOF IS THE PROPERTY OF HARGER INC., AND IS FURNISHED TO YOU FOR INFORMATION ONLY. THE INFORMATION CONTAINED HEREIN IS CONFIDENTIAL AND OF A PROPRIETARY NATURE AND MUST NOT BE DISCLOSED TO THIRD PARTIES WITHOUT THE EXPRESS WRITTEN APPROVAL OF HARGER INC.

C	USES R350 IN LRU 350ATBLANK	122906	DVB		
B	WAS MS6S & 6-32 TAP	112706	DVB		
A	MOD. PRODUCTION FLOW	012502	WSM		
LET	REVISION	DATE	BY		
TOLERANCES UNLESS NOTED:					
FRACTIONAL					
.00 +/- 1/64					
.000 +/- .005					

PART NO. 350-5T  
FLOOR GROUND RECEPTACLE

DRAWN BY: LAL		301 ZIEGLER DRIVE GRAYSLAKE, IL 60030 (847) 548-8700	REV/SDH: C
DATE: 120500	CHECKED BY:		
HARGER™		SCALE: 3/5	SHEET: 1 OF 1