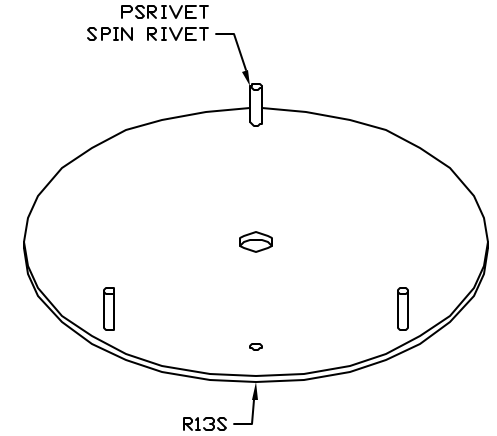
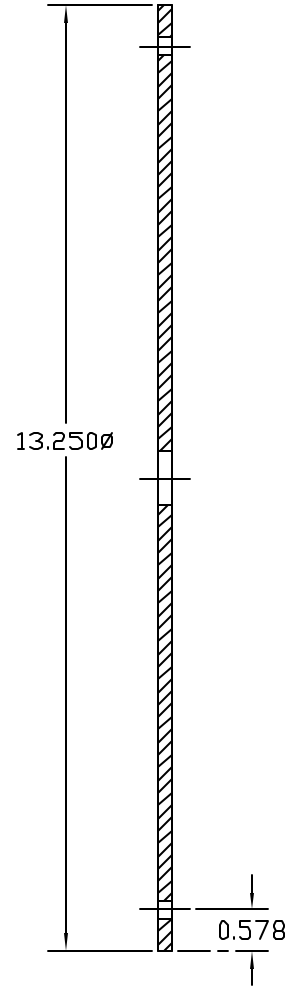
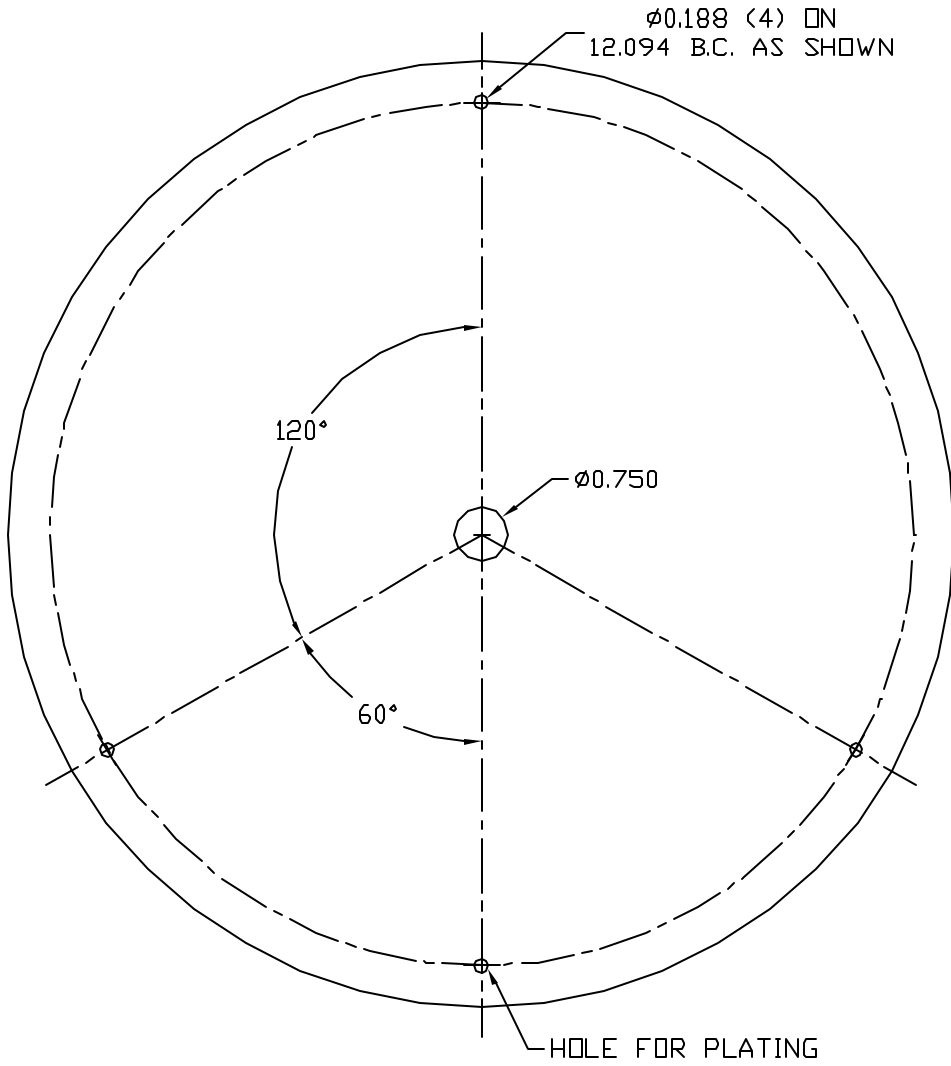


ZINC PLATE/ULTRASEAL AFTER RIVETING



ESTIMATED WEIGHT: 2.00#

THIS DOCUMENT AND THE CONTENTS THEREOF IS THE PROPERTY OF HARGER INC., AND IS FURNISHED TO YOU FOR INFORMATION ONLY. THE INFORMATION CONTAINED HEREIN IS CONFIDENTIAL AND OF A PROPRIETARY NATURE AND MUST NOT BE DISCLOSED TO THIRD PARTIES WITHOUT THE EXPRESS WRITTEN APPROVAL OF HARGER INC.

REVISION	DATE	BY
B	051100	LAL
A	082799	LAL
LET		

TOLERANCES UNLESS NOTED:
 FRACTIONAL +/- 1/64
 .00 +/- .010
 .000 +/- .005

PART NO. 12PBS
 STEEL TEST WELL COVER

DRAWN BY: LAL	REVISION: B
CHECKED BY:	SCALE: 3/8
DATE: 011998	SHEET: 1 OF 1

HARGER
 301 ZIEGLER DRIVE
 GRAYSLAKE, IL 60030
 (847) 548-8700