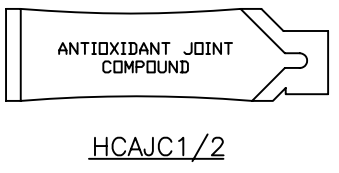
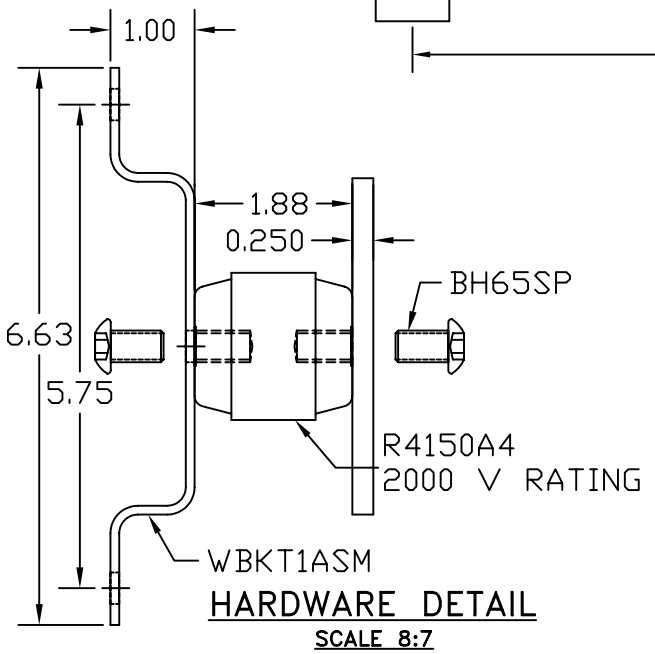


**TINNED BICSI GROUND BAR ASSEMBLY**



EST. WEIGHT 8.25 LBS

**APPROVED**

AS DRAWN: \_\_\_\_\_  
 AS NOTED: \_\_\_\_\_  
 DATE: \_\_\_\_\_

THIS DOCUMENT AND THE CONTENTS THEREOF IS THE PROPERTY OF HARGER INC., AND IS FURNISHED TO YOU FOR INFORMATION ONLY. THE INFORMATION CONTAINED HEREIN IS CONFIDENTIAL AND OF A PROPRIETARY NATURE AND MUST NOT BE DISCLOSED TO THIRD PARTIES WITHOUT THE EXPRESS WRITTEN APPROVAL OF HARGER INC.

-	-	-	-
C	BH65SP WAS CS66S, LW6S, W6S	031708	DVB
B	REVISED PATTERN	112204	LAL
A	ADD ANTIOXIDANT	093003	EHS
LET	REVISION	DATE	BY
TOLERANCES UNLESS NOTED:		3RD ANGLE PROJECTION	
FRACTIONAL	+/- 1/16		
.00	+/- .030		
.000	+/- .010		

**PART NO. TGBI14424TMGB**  
 TINNED BICSI CU GROUND BAR ASSEMBLY

DRAWN BY: EHS  
 CHECKED BY: \_\_\_\_\_  
 DATE: 071001

**HARGER™**  
 301 ZIEGLER DRIVE  
 GRAYSLAKE, IL 60030  
 (847) 548-8700

REVISION: C  
 SCALE: 3/8  
 SHEET: 1 OF 1