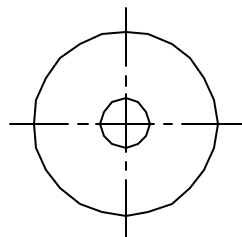
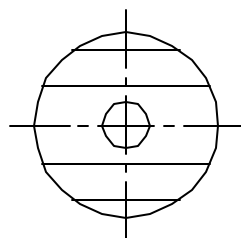
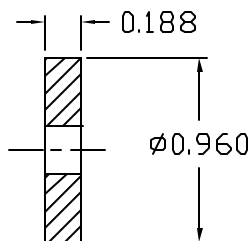


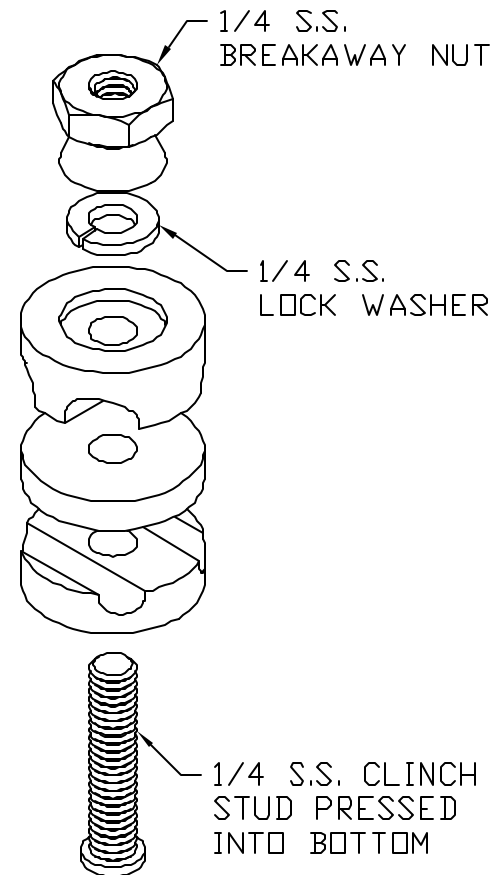
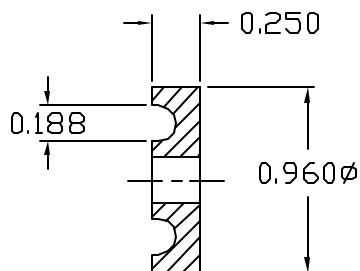
TOP
TIN PLATED
BRASS



MIDDLE
TIN PLATED
BRASS



BOTTOM
TIN PLATED
BRASS



ASSEMBLY

EST WT 0.2#

APPROVED

☐ AS DRAWN: _____
☐ AS NOTED: _____
DATE: _____

THIS DOCUMENT AND THE CONTENTS THEREOF IS THE PROPERTY OF HARGER INC., AND IS FURNISHED TO YOU FOR INFORMATION ONLY. THE INFORMATION CONTAINED HEREIN IS CONFIDENTIAL AND OF A PROPRIETARY NATURE AND MUST NOT BE DISCLOSED TO THIRD PARTIES WITHOUT THE EXPRESS WRITTEN APPROVAL OF HARGER INC.

LET	REVISION	DATE	BY
TOLERANCES UNLESS NOTED:			
FRACTIONAL		+/- 1/64	
		+/- .010	
		+/- .005	

PART NO. FGC2TP
FENCE GROUND CLAMP
#2 WIRE

DRAWN BY:

LAL

CHECKED BY:

DATE:

122710

HARGER

301 ZIEGLER DRIVE
GRAYSLAKE, IL 60030
(847) 548-8700

REVISION:

-

SCALE:

FULL

SHEET:

1 OF 1