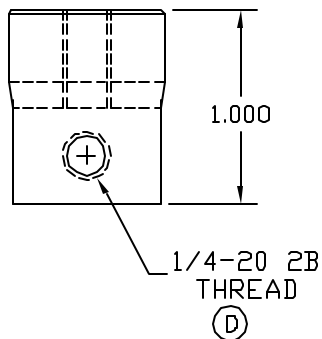
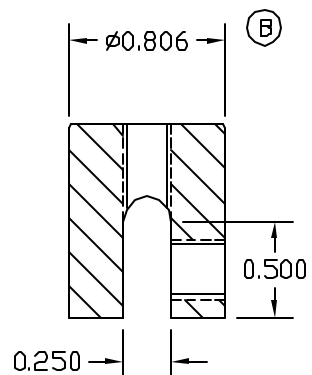
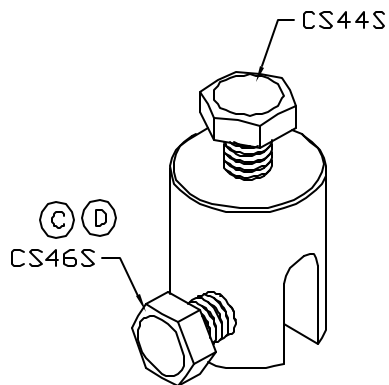


1/4-20 2B
THREAD



APPROVED

☐ AS DRAWN: _____

☐ AS NOTED: _____

DATE: _____

THIS DOCUMENT AND THE CONTENTS THEREOF IS THE PROPERTY OF HARGER INC., AND IS FURNISHED TO YOU FOR INFORMATION ONLY. THE INFORMATION CONTAINED HEREIN IS CONFIDENTIAL AND OF A PROPRIETARY NATURE AND MUST NOT BE DISCLOSED TO THIRD PARTIES WITHOUT THE EXPRESS WRITTEN APPROVAL OF HARGER INC.

D	WAS CS56S ECO 0059	071813	LAL
C	CS56S WAS CS54S	022613	BK
B	WAS 3/4 HEX STOCK	060501	LAL
A	ADDED BOM	111999	LAL
LET	REVISION	DATE	BY
TOLERANCES UNLESS NOTED:			
FRACTIONAL +/- 1/64			
.00 +/- .010			
.000 +/- .005			

PART NO. ALSC
ALUMINUM SEAM CLAMP

DRAWN BY:

LAL

CHECKED BY:

DATE:

032197

HARGER

301 ZIEGLER DRIVE
GRAYSLAKE, IL 60030
(847) 548-8700

REVISION:

D

SCALE:

FULL

SHEET:

1 OF 1