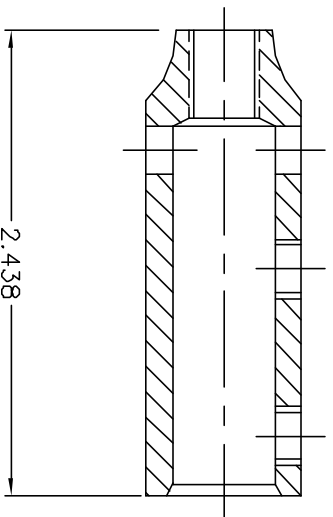


ASSEMBLY



APPROVED

AS DRAWN: _____
 AS NOTED: _____
 DATE: _____

THIS DOCUMENT AND THE CONTENTS THEREOF IS THE PROPERTY OF HARGER INC., AND IS FURNISHED TO YOU FOR INFORMATION ONLY. THE INFORMATION CONTAINED HEREIN IS CONFIDENTIAL AND OF A PROPRIETARY NATURE AND MUST NOT BE DISCLOSED TO THIRD PARTIES WITHOUT THE EXPRESS WRITTEN APPROVAL OF HARGER INC.

| | | | |
|--------------------------|-----------------------|---------|------|
| | | | |
| | | | |
| C | ADDED PRODUCTION NOTE | 0914406 | DVB |
| B | ADDED PACKAGE NOTE | 101601 | EHS |
| A | ADDED BOM | 011100 | KAB |
| LET | REVISION | DATE | BY |
| TOLERANCES UNLESS NOTED: | | | |
| | FRACTIONAL | +/- | 1/64 |
| | .00 | +/- | .010 |
| | .000 | +/- | .005 |

PART NO. 157
 3/8" VERTICAL CONNECTOR

| | |
|--|--------|
| DRAWN BY: | LAL |
| CHECKED BY: | LAL |
| DATE: | 072897 |
|  301 ZIEGLER DRIVE GRAYS LAKE, IL 60030 (847) 548-8700 | |
| REVISION: | C |
| SCALE: | FULL |
| SHEET: | 1 OF 1 |