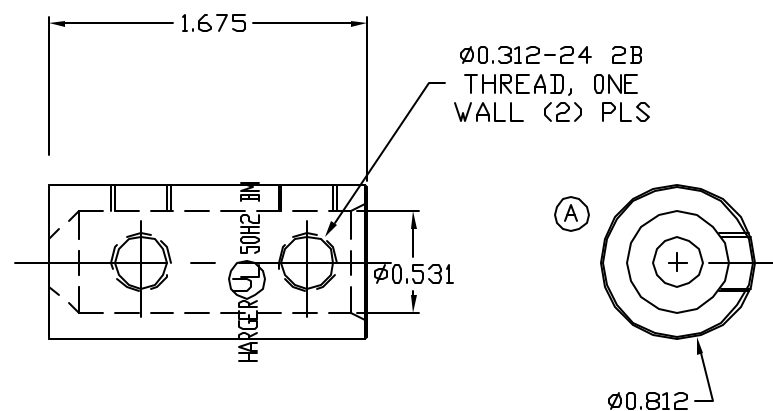


ALUMINUM HALF
69 PCS/BAR



BRASS HALF
75 PCS/BAR

EST. WT 0.3#

APPROVED

AS DRAWN: _____
 AS NOTED: _____
 DATE: _____

THIS DOCUMENT AND THE CONTENTS THEREOF IS THE PROPERTY OF HARGER INC., AND IS FURNISHED TO YOU FOR INFORMATION ONLY. THE INFORMATION CONTAINED HEREIN IS CONFIDENTIAL AND OF A PROPRIETARY NATURE AND MUST NOT BE DISCLOSED TO THIRD PARTIES WITHOUT THE EXPRESS WRITTEN APPROVAL OF HARGER INC.

B	ADDED 211R STAMP	071113	LAL
A	WAS 0.250	052913	LAL
LET	REVISION	DATE	BY
TOLERANCES UNLESS NOTED:		3RD ANGLE PROJECTION	
FRACTIONAL	+/- 1/16		
.00	+/- .030		
.000	+/- .010		

PART NO. 211R

DRAWN BY: LAL
 CHECKED BY: -
 DATE: 042610



REVISION: B
 SCALE: FULL
 SHEET: 1 OF 1