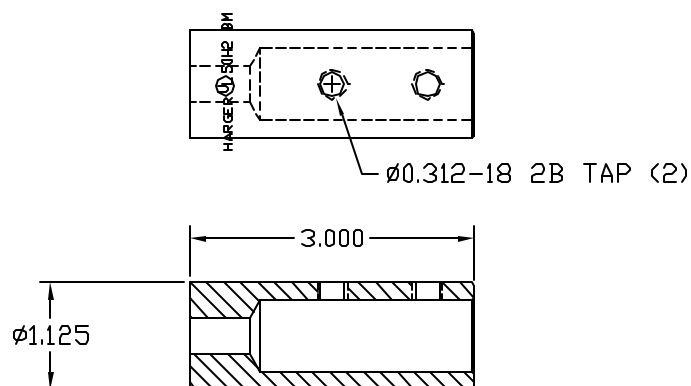
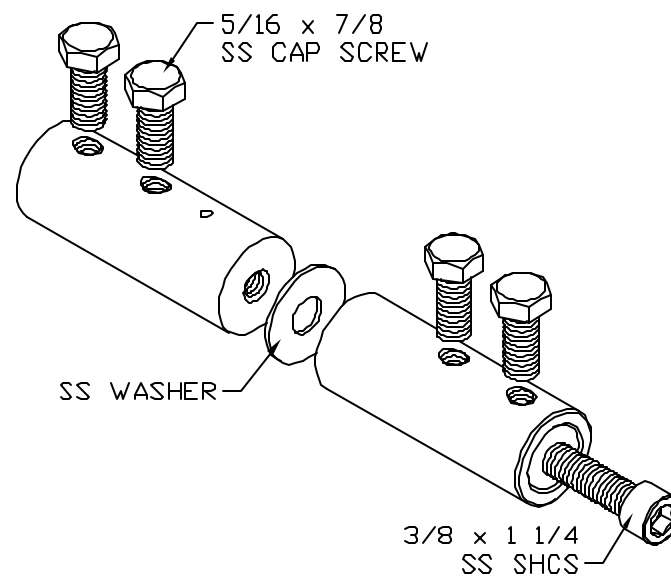




ALUMINUM HALF



BRASS HALF



EST. WEIGHT 0.9 LBS

THIS DOCUMENT AND THE CONTENTS THEREOF IS THE PROPERTY OF HARGER INC., AND IS FURNISHED TO YOU FOR INFORMATION ONLY. THE INFORMATION CONTAINED HEREIN IS CONFIDENTIAL AND OF A PROPRIETARY NATURE AND MUST NOT BE DISCLOSED TO THIRD PARTIES WITHOUT THE EXPRESS WRITTEN APPROVAL OF HARGER INC.					PART NO. 211XL	
					EXTRA LARGE BIMETAL CONNECTOR	
	C	REDESIGNED FOR SHCS	021408	LAL		
	B	HARGER UL STAMP ADDED	021208	DVB	DRAWN BY:	REVISION:
	A	UPDATE AND NEW WASHER	011101	EHS	SSS	C
	LET	REVISION	DATE	BY	CHECKED BY:	SCALE:
TOLERANCES UNLESS NOTED:		3RD ANGLE PROJECTION		DATE:		
FRACTIONAL +/- 1/64				091495		
.00 +/- .010						
.000 +/- .005						
						
				301 ZIEGLER DRIVE GRAYSLAKE, IL 60030 (847) 548-8700		
				SHEET: 1 OF 1		