

## **RADWIN SU-PRO 250 Series**

Subscriber Unit - Data Sheet (RW5000/SU-Pro/5601/F54/IC/EMB)



**RW-5601-1P54**

### **Product Description**

RW-5601-1P54 is SU PRO, Connectorized subscriber unit that delivers up to 250 Mbps net aggregate throughput and supports SLA (CIR) or Best-Effort service level.

SU PRO supports 5.2 to 5.8 GHz and complies with IC & FCC/IC regulations.

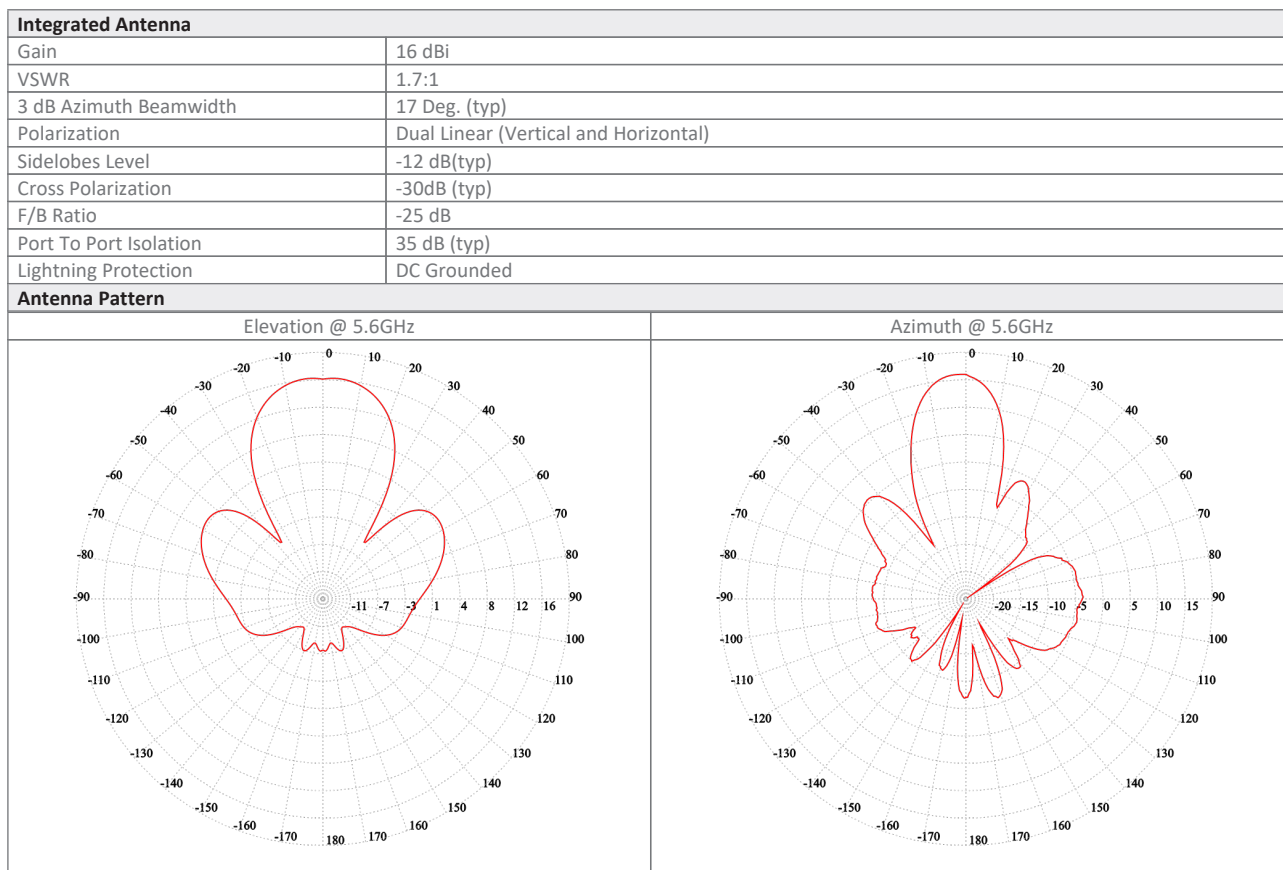
The unit includes an embedded antenna and connectors (2 x SMA) for the high gain slide-on TurboGain antenna. The connectors can be used for 3rd party external antenna.

### **Product Highlights**

- Up to 250 Mbps net aggregated throughput
- Long range - Up to 40 km / 25 miles
- Guaranteed Service Level Agreement based on CIR or Best Effort Service level
- Multiple Antenna configuration: 16dBi embedded antenna, 22dBi antenna when using the TurboGain antenna, and 3rd party external antenna (based on a future software upgrade)
- Short and constant latency
- Advanced MIMO, OFDM and Antenna Diversity
- Robust and reliable operation in harsh environmental conditions including obstructed line-of-sight scenarios
- IP-66
- Simplified installation using a Smartphone app.

## Product Specifications:

Configuration					
Architecture	Outdoor Unit with an embedded antenna and connectorized for external antenna (2 x SMA)				
PoE to ODU Interface	Outdoor CAT-5e; Maximum cable length: 100m for 10/100BaseT and 75m for 1000BaseT				
Radio					
Max Capacity	250 Mbps net aggregate throughput				
Range	Up to 40 km / 25 miles				
Channel Bandwidth	Configurable: 20, 40, 80 MHz (for the default band); Dynamic Channel BW selection (20/40/80 MHz)				
Modulation	MIMO-OFDM (BPSK/QPSK/16QAM/64QAM/256QAM)				
Adaptive Modulation & Coding	Supported				
DFS	Supported (IC)				
Diversity	Supported				
Max Tx Power	24 dBm; max EIRP 29 dBm (for the default band)				
Duplex Technology	TDD				
Error Correction	FEC k = 1/2, 2/3, 3/4, 5/6				
Encryption	AES 128; FIPS 197				
Support Indoor units	RADWIN PoE device (included in the package); pinout: (+) pins 4/5, (-) pins 7/8				
Uplink / Downlink Allocation	Configurable: Symmetric or Asymmetric				
Layer 2	HUB Mode				
QoS	Packet classification to 4 priority queues according to 802.1P or Diffserv				
VLAN Support	802.1Q, QinQ, 4094 VLANs				
ODU Management	IPv4/IPv6 dual-stack; SNMP v1, SNMPv3; HTTP/HTTPS using web browser				
Supported Bands					
Band	CBW 10MHz [GHz]	CBW 20MHz [GHz]	CBW 40MHz [GHz]	CBW 80MHz [GHz]	Radio Compliance
5.485-5.715 GHz IC (default)	-	5.475-5.715	5.475-5.720	5.485-5.600	ISED RSS-247
5.8 GHz FCC/IC	5.730-5.845	5.730-5.845	5.730-5.845	5.730-5.845	FCC 47CFR Part 15.407; ISED RSS-247
5.255-5.345 GHz IC	-	5.250-5.345	5.250-5.345	5.250-5.345	FCC 47CFR Part 15.407
Mechanical					
ODU Dimensions	18.2(w) x 18.2(h) x 6.0(d) cm				
ODU Weight	0.5 kg / 1.10 lbs				
Power					
Power Feeding	Power provided over ODU-IDU cable				
Power Consumption	<12W				
Environmental					
Operating Temperatures	-35°C to 60°C / -31°F to 140°F				
Humidity	100% condensing, IP66				
Safety					
US/CAN (cTUVus)	UL 60950-1, UL 60950-22, CAN/CSA C22.2 60950-1, CAN/CSA C22.2 60950-22				
CE/IEC	EN/IEC 60950-1, EN/IEC 60950-22				
EMC					
FCC	47 CFR, Part15, Subpart B, Class B				
ETSI	EN 300 386, EN 301 489-1, EN 301 489-4				
CAN/CSA-CEI/IEC	CISPR 22-2010 Class B				



#### Ordering Info

**Part Number:** RW-5601-1P54

**Description:** RADWIN SU-PRO 250 ODU, with an embedded antenna and connectorized for external antenna (2 x SMA), supporting multi frequency bands at GHz, factory default .

Datasheet information can be changed by manufacturer without prior notice