

RADWIN SU-PRO 50 Series

Subscriber Unit - Data Sheet (RW5000/SU-Pro/5H50/F58/FCC/INT)



RW-5H50-0P58

Product Description

RW-5H50-0P58 is SU PRO, Integrated subscriber unit that delivers up to 50 Mbps net aggregate throughput and supports SLA (CIR) or Best-Effort service level.

SU PRO supports 5.1 to 5.8 GHz and complies with FCC/IC & FCC regulations.

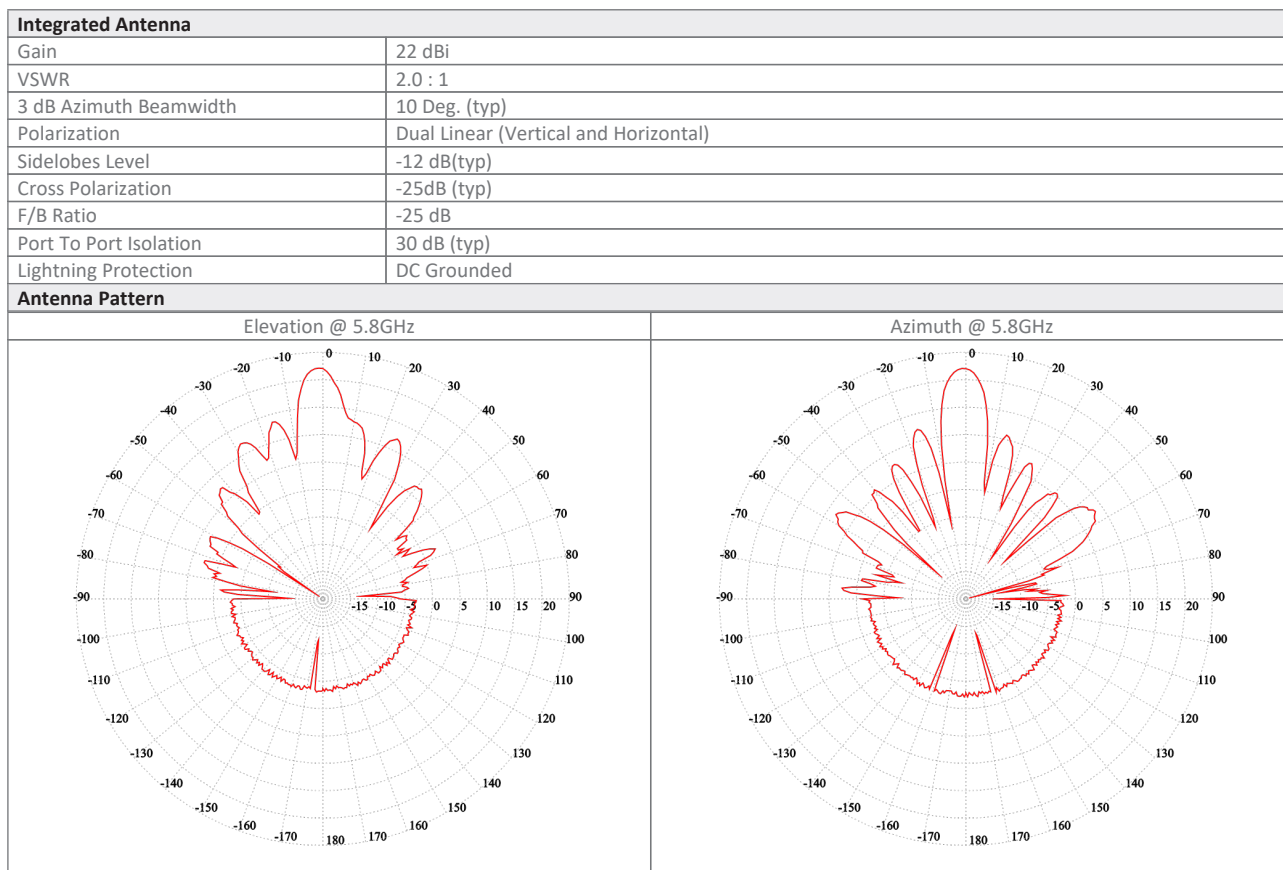
The unit includes an integrated 22dBi antenna.

Product Highlights

- Up to 50 Mbps net aggregated throughput, upgradable to 250Mbps
- Long range - Up to 40 km / 25 miles
- Guaranteed Service Level Agreement based on CIR or Best Effort Service level
- 22dBi antenna gain
- Short and constant latency
- Advanced MIMO, OFDM and Antenna Diversity
- Robust and reliable operation in harsh environmental conditions including obstructed line-of-sight scenarios
- IP-67
- Simplified installation using a Smartphone app.

Product Specifications:

Configuration					
Architecture	Outdoor Unit with an integrated antenna				
PoE to ODU Interface	Outdoor CAT-5e; Maximum cable length: 100m for 10/100BaseT and 75m for 1000BaseT				
Radio					
Max Capacity	50 Mbps net aggregate throughput; Upgradable to 250 Mbps with license key				
Range	Up to 40 km / 25 miles				
Channel Bandwidth	Configurable: 10, 20, 40, 80 MHz (for the default band); Dynamic Channel BW selection (20/40/80 MHz)				
Modulation	MIMO-OFDM (BPSK/QPSK/16QAM/64QAM/256QAM)				
Adaptive Modulation & Coding	Supported				
DFS	Supported (FCC)				
Diversity	Supported				
Max Tx Power	21 dBm				
Duplex Technology	TDD				
Error Correction	FEC k = 1/2, 2/3, 3/4, 5/6				
Encryption	AES 128				
802.1x	Supported				
Option 82	Supported				
Non PPPoE filtering	Supported				
DHCP Filter	Supported				
IGMP snooping	Supported				
Nomadic support	Supported				
RADIUS Authorization	Supported				
RADIUS User authentication	Supported				
Syslog	Supported				
Support Indoor units	RADWIN PoE device (included in the package); pinout: (+) pins 4/5, (-) pins 7/8				
Uplink / Downlink Allocation	Configurable: Symmetric or Asymmetric				
Layer 2	HUB Mode				
QoS	Packet classification to 4 priority queues according to 802.1P or Diffserv				
VLAN Support	802.1Q, QinQ, 4094 VLANs				
ODU Management	IPv4/IPv6 dual-stack; SNMP v1, SNMPv3; HTTP/HTTPS using web browser				
Supported Bands					
Band	CBW 10MHz [GHz]	CBW 20MHz [GHz]	CBW 40MHz [GHz]	CBW 80MHz [GHz]	Radio Compliance
5.8 GHz FCC/IC (default)	5.730-5.845	5.730-5.845	5.730-5.845	5.730-5.845	FCC 47CFR Part 15.407; ISSED RSS-247
5.1 GHz FCC	5.170-5.250	5.170-5.250	5.170-5.250	5.170-5.250	FCC 47CFR Part 15.407
5.2 GHz FCC	-	5.255-5.340	5.255-5.340	5.250-5.340	FCC 47CFR Part 15.407
5.4 GHz FCC	-	5.480-5.715	5.480-5.715	5.485-5.715	FCC 47CFR Part 15.407
5.1 GHz FCC	5.170-5.845	5.170-5.845	5.170-5.845	5.170-5.845	FCC 47CFR Part 15.407
Mechanical					
ODU Dimensions	32.5(w) x 32.5(h) x 6.4(d) cm				
ODU Weight	2 kg / 4.41 lbs				
Power					
Power Feeding	Power provided over ODU-IDU cable				
Power Consumption	<13W				
Environmental					
Operating Temperatures	-35°C to 60°C / -31°F to 140°F				
Humidity	100% condensing, IP67 (totally protected against dust and against immersion in water up to 1m)				
Safety					
US/CAN (cTUVus)	UL 60950-1, UL 60950-22, CAN/CSA C22.2 60950-1, CAN/CSA C22.2 60950-22				
CE/IEC	EN/IEC 60950-1, EN/IEC 60950-22				
EMC					
FCC	47 CFR, Part15, Subpart B, Class B				
ETSI	EN 301 489-1, EN 301 489-4, EN 301 489-17				
CAN/CSA-CEI/IEC	AS/NZS, CISPR 32 2015 Class B				



Ordering Info
Part Number: RW-5H50-0P58
Description: RADWIN SU-PRO 50 ODU, with an integrated antenna, supporting multi frequency bands at 5.x GHz, factory default 5.8 GHz
 FCC/IC.

Datasheet information can be changed by manufacturer without prior notice