

RADWIN SU-AIR 100 Series

Subscriber Unit - Data Sheet (RW5000/SU-Air/5H00/F54/IC/INT)



RW-5H00-1A54

Product Description

RW-5H00-1A54 is SU AIR, Integrated subscriber unit that delivers up to 100 Mbps net aggregate throughput and supports Best-Effort service level.

SU AIR supports 5.4 to 5.8 GHz and complies with IC & FCC/IC regulations.

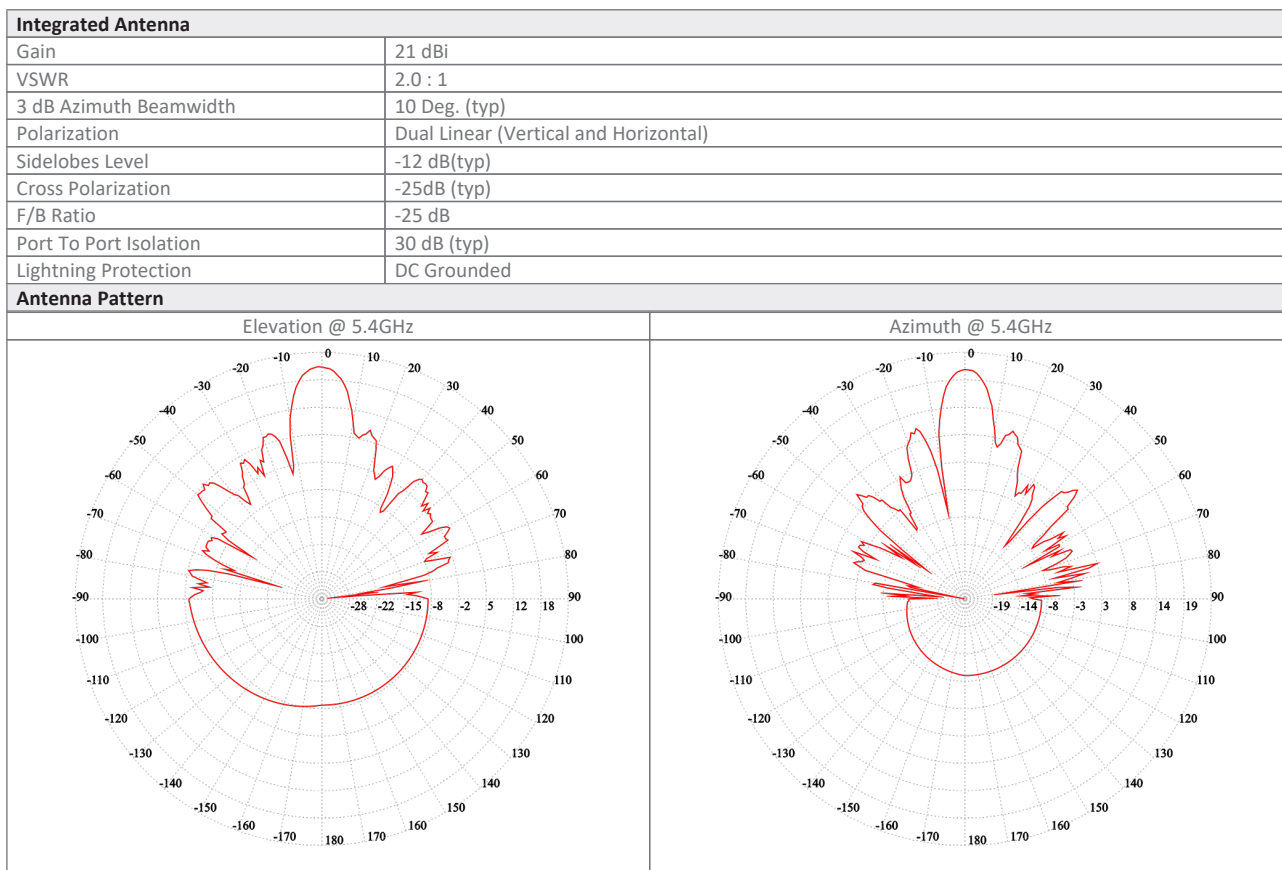
The unit includes an integrated 22dBi antenna.

Product Highlights

- Up to 100 Mbps net aggregated throughput
- Long range - Up to 40 km / 25 miles
- Best Effort Service level
- 22dBi antenna gain
- Short and constant latency
- Advanced MIMO, OFDM and Antenna Diversity
- Robust and reliable operation in harsh environmental conditions including obstructed line-of-sight scenarios
- IP-67
- Simplified installation using a Smartphone app.

Product Specifications:

Configuration					
Architecture	Outdoor Unit with an integrated antenna				
PoE to ODU Interface	Outdoor CAT-5e; Maximum cable length: 100m for 10/100BaseT and 75m for 1000BaseT				
Radio					
Max Capacity	100 Mbps net aggregate throughput				
Channel Bandwidth	Configurable: 20, 40, 80 MHz (for the default band); Dynamic Channel BW selection (20/40/80 MHz)				
Modulation	MIMO-OFDM (BPSK/QPSK/16QAM/64QAM/256QAM)				
Adaptive Modulation & Coding	Supported				
DFS	Supported (IC)				
Diversity	Supported				
Max Tx Power	21 dBm				
Duplex Technology	TDD				
Error Correction	FEC k = 1/2, 2/3, 3/4, 5/6				
Encryption	AES 128				
Support Indoor units	RADWIN PoE device (included in the package); pinout: (+) pins 4/5, (-) pins 7/8				
Uplink / Downlink Allocation	Configurable: Symmetric or Asymmetric				
Layer 2	HUB Mode				
QoS	Packet classification to 4 priority queues according to 802.1P or Diffserv				
VLAN Support	802.1Q, QinQ, 4094 VLANs				
ODU Management	IPv4/IPv6 dual-stack; SNMP v1, SNMPv3; HTTP/HTTPS using web browser				
Supported Bands					
Band	CBW 10MHz [GHz]	CBW 20MHz [GHz]	CBW 40MHz [GHz]	CBW 80MHz [GHz]	Radio Compliance
5.4 GHz IC (default)	-	5.480-5.715	5.480-5.715	5.485-5.600	ISED RSS-247
5.8 GHz FCC/IC	5.730-5.845	5.730-5.845	5.730-5.845	5.730-5.845	FCC 47CFR Part 15.407; ISED RSS-247
Mechanical					
ODU Dimensions	32.5(w) x 32.5(h) x 6.4(d) cm				
ODU Weight	2 kg / 4.41 lbs				
Power					
Power Feeding	Power provided over ODU-IDU cable				
Power Consumption	<9W				
Environmental					
Operating Temperatures	-35°C to 60°C / -31°F to 140°F				
Humidity	100% condensing, IP67 (totally protected against dust and against immersion in water up to 1m)				
Safety					
US/CAN (cTUVus)	UL 60950-1, UL 60950-22, CAN/CSA C22.2 60950-1, CAN/CSA C22.2 60950-22				
CE/IEC	EN/IEC 60950-1, EN/IEC 60950-22				
EMC					
FCC	47 CFR, Part15, Subpart B, Class B				
ETSI	EN 301 489-1, EN 301 489-4, EN 301 489-17				
CAN/CSA-CEI/IEC	AS/NZS, CISPR 32 2015 Class B				



Ordering Info

Part Number: RW-5H00-1A54

Description: RADWIN SU-AIR 100 ODU, with an integrated antenna, supporting multi frequency bands at 5.x GHz, factory default 5.4 GHz IC.

Datasheet information can be changed by manufacturer without prior notice