

NOTES :
UNLESS OTHERWISE SPECIFIED

1. THE GENERAL CONTRACTOR MUST VERIFY ALL DIMENSIONS, CONDITIONS AND ELEVATIONS BEFORE STARTING WORK. ALL DISCREPANCIES SHALL BE CALLED TO THE ATTENTION OF THE ENGINEER AND SHALL BE RESOLVED BEFORE PROCEEDING WITH THE WORK. ALL WORK SHALL BE PERFORMED IN A WORKMANLIKE MANNER IN ACCORDANCE WITH ACCEPTED CONSTRUCTION PRACTICES.
2. NOTES AND DETAILS ON THESE DRAWINGS SHALL TAKE PRECEDENCE OVER THESE GENERAL NOTES.
3. THE DETAILS ON THESE DRAWINGS SHALL APPLY IN ALL CASES UNLESS SPECIFICALLY SHOWN OTHERWISE. WHERE NO DETAIL IS SHOWN, CONSTRUCTION SHALL BE AS SHOWN FOR SIMILAR WORK.
4. IT IS THE INTENTION OF THESE DRAWINGS TO SHOW THE COMPLETED INSTALLATION. THE CONTRACTOR SHALL BE RESPONSIBLE FOR ALL TEMPORARY BRACING, SHORING, TIES, FORMWORK, ETC. IN ACCORDANCE WITH ALL NATIONAL, STATE, AND LOCAL ORDINANCES, TO SAFELY EXECUTE ALL WORK AND SHALL BE RESPONSIBLE FOR SAME. ALL WORK SHALL BE IN ACCORDANCE WITH LOCAL CODES.
5. THE CONTRACTOR SHALL USE ADEQUATE NUMBERS OF SKILLED WORKMEN WHO ARE THOROUGHLY TRAINED AND EXPERIENCED IN THE NECESSARY CRAFTS, AND WHO ARE COMPLETELY FAMILIAR WITH THE SPECIFIED REQUIREMENTS AND METHODS NEEDED FOR PROPER PERFORMANCE OF THE WORK.
6. CONSTRUCTION CONTRACTOR AGREES THAT IN ACCORDANCE WITH GENERALLY ACCEPTED CONSTRUCTION PRACTICES, CONSTRUCTION CONTRACTOR WILL BE REQUIRED TO ASSUME SOLE AND COMPLETE RESPONSIBILITY FOR JOB SITE CONDITIONS DURING THE COURSE OF CONSTRUCTION OF THE PROJECT, INCLUDING SAFETY OF ALL PERSONS AND PROPERTY, THAT THIS REQUIREMENT SHALL BE MADE TO APPLY CONTINUOUSLY AND NOT BE LIMITED TO NORMAL WORKING HOURS, AND CONSTRUCTION CONTRACTOR FURTHER AGREES TO INDEMNIFY AND HOLD DESIGN PROFESSIONAL HARMLESS FROM ANY AND ALL LIABILITY, REAL OR ALLEGED, IN CONNECTION WITH THE PERFORMANCE OF WORK ON THIS PROJECT.
7. THE TOWER DESIGN DOES NOT INCLUDE STRESSES DUE TO ERECTION AND/OR TRANSPORTATION SINCE ERECTION EQUIPMENT AND METHODS ARE UNKNOWN.
8. TOWER GROUNDING SHALL COMPLY WITH ALL LOCAL AND NATIONAL CODES. GROUNDING TO BE DONE BEFORE ERRECTION.
9. THE TOWER IS DESIGNED TO SUPPORT ONLY THE ANTENNAS AS SHOWN ON THE DRAWINGS. THE ENGINEER WILL NOT BE RESPONSIBLE FOR OVERSTRESS CONDITIONS WHICH MAY OCCUR DUE TO DEVIATIONS IN ANTENNA SIZES AND/OR LOCATIONS FROM THOSE SHOWN ON THE DRAWINGS.
10. ALL WORK SHALL COMPLY WITH OSHA SAFETY REQUIREMENTS. PROCEDURES FOR THE PROTECTION OF EXCAVATIONS, EXISTING CONSTRUCTION AND UTILITIES SHALL BE ESTABLISHED PRIOR TO FOUNDATION INSTALLATION.
11. ALL FACE WIDTHS ARE FROM CENTER LINE OF PIPE.
12. STEEL PIPE CONFORMS TO ASTM A53. PLATES, BAR, AND ANGLE CONFORMS TO ASTM A36. STRUCTURAL TUBING CONFORMS TO ASTM A-513 C1020 DOM TYPE 5. ALL WELDING CONFORMS TO A.W.S. D1.1 LATEST REVISION. ALL GALVANIZING CONFORMS TO ASTM A-123 AND A-153 FOR HARDWARE.

MATERIAL SPECIFICATION:

SHAPES ASTM-A36
PIPE ASTM A-53 GRADE B
HSS ASTM A500 GRADE B

GALVINIZED PER ASTM A123 AND 153

ALL ASTM A325 BOLTS ARE TO BE TIGHTENED TO A SNUG TIGHT CONDITION.

A SNUG TIGHT CONDITION IS DEFINED AS THE TIGHTNESS THAT EXISTS WHEN ALL PLIES IN A JOINT ARE IN FIRM CONTACT. THIS MAY BE ATTAINED BY A FEW IMPACTS OF AN IMPACT WRENCH OR THE FULL EFFORT OF A MAN USING AN ORDINARY SPUD WRENCH.

REF.: "SPECIFICATION FOR ASTM A325 OR A490 BOLTS" MANUAL OF STEEL CONSTRUCTION.
ALLOWABLE STRESS DESIGN. AISC. 14TH EDITION, 2011. PAGE 16.2xi.

INSPECTION PROGRAM:

1. ALL WELDING SHALL BE INSPECTED BY AN APPROVED TESTING AGENCY IN ACCORDANCE WITH THE CBC 2016 1705.2.1. SUBMIT INSPECTOR QUALIFICATION IN ACCORDANCE WITH CBC 2016 PRIOR TO OBTAINING BUILDING PERMIT. SUBMIT INSPECTION REPORTS TO THE DEVELOPMENT DEPARTMENT, BUILDING AND SAFETY SERVICE DIVISION PRIOR TO OCCUPANCY.

WELDING INSPECTION TASK PER AISC 360, TABLE N5.4-1, -2 & -3.

2. ALL HIGH-STRENGTH BOLTING SHALL BE INSPECTED BY AN APPROVED TESTING AGENCY IN ACCORDANCE WITH THE CBC 2016 1705.2.1. SUCH INSPECTION MAY BE PERFORMED ON A PERIODIC BASIS IN ASSORANCE WITH THE REQUIREMENTS OF THE CBC 2016. SUBMIT INSPECTOR QUALIFICATIONS IN ACCORDANCE WITH CBC 2016 PRIOR TO OBTAINING BUILDING PERMIT. SUBMIT INSPECTION REPORTS TO THE DEVELOPMENT DEPARTMENT, BUILDING AND SAFETY SERVICES DIVISION PRIOR TO OCCUPANCY.

HIGH STRENGTH BOLT INSPECTION TASK PER AISC 360, TABLE N5.6-1, -2 & -3.

3. CONCRETE CONSTRUCTION INSPECTION SHALL INCLUDE THE FOLLOWING PER THE CBC 2016, TABLE 1705.3:

- * INSPECTION REINFORCEMENT, INCLUDING PRESTRESSING TENDONS, AND VERIFY PLACEMENT.
- * INSPECT ANCHORS CAST IN CONCRETE.
- * VERIFY USE OF REQUIRED DESIGN MIX.
- * INSPECT FORMWORK FOR SHAPE , LOCATION AND DIMENSIONS OF THE CONCRETE MEMBER BEING FORMED.

NOTE: ALL INSPECTIONS SHALL BE PREFORMED PERIODIC ONLY AT TIME OF PROJECT.

150' SELF-SUPPORT TOWER
ISP SUPPLIES

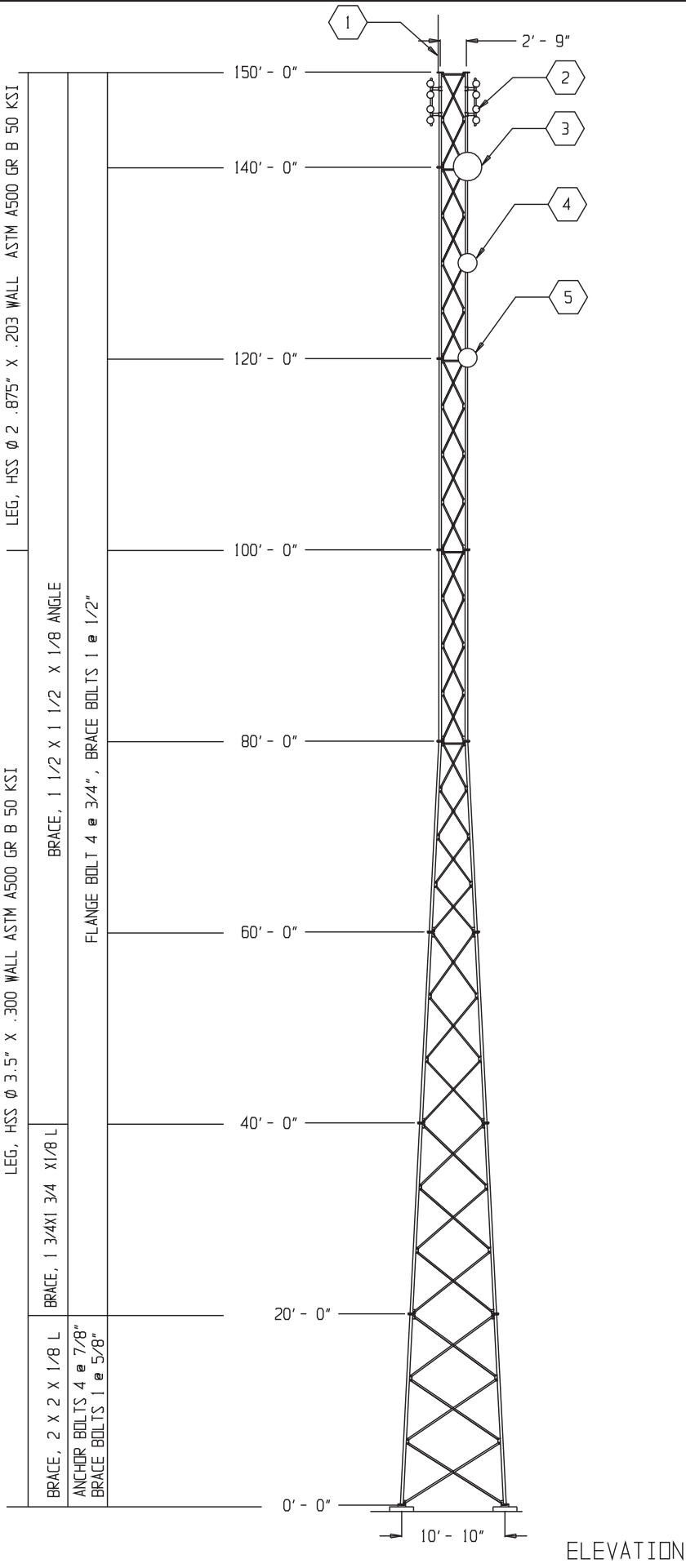
TOWER DESIGN LOADING

WIND LOAD: 2013 CBC 1609A.1.1, ASCE7-10 ULTIMATE WIND SPEED 110 MPH
TIA/EIA-222 REV G 85 MPH W/ 3 SECOND GUST AND NO ICE
EXPOSURE C, STRUCTURE CLASS II
TOPOGRAPHY CATEGORY 1 WITH A CREST HEIGHT 0'
EARTHQUAKE SPECTRAL AT SHORT PERIOD: S_s =1.5, S_1 =0.549
FOUNDATION REACTIONS: SHEAR= 13.5 kips, AXIAL= 9.4 kips,
MOMENT= 682 kip ft, LOAD COMBINATION 1.2D + 1.6W
SOIL DESIGN : CLASS 4 SOIL PER CBC 2013

INDEX OF DRAWINGS

SHEET NO.	DESCRIPTION
SHEET 1	T-1 COVER AND GENERAL NOTES
SHEET 2	S-1 150' SS TOWER ELEVATION
SHEET 3	S-2 150' SS TOWER FOUNDATION
SHEET 4	S-3 RTT10 20' SECTION ASSEMBLY
SHEET 5	S-4 RTT10 20' LEG WELDMENT
SHEET 6	S-5 RTT08 20' SECTION ASSEMBLY
SHEET 7	S-6 RTT08 20' LEG WELDMENT
SHEET 8	S-7 RTT06 20' SECTION ASSEMBLY
SHEET 9	S-8 RTT06 20' LEG WELDMENT
SHEET 10	S-9 RTT04 20' SECTION ASSEMBLY
SHEET 11	S-10 RTT04 20' LEG WELDMENT
SHEET 12	S-11 RTS02 20' SECTION ASSEMBLY
SHEET 13	S-12 RTS02 20' LEG WELDMENT
SHEET 14	S-13 RTS02A 20' SECTION ASSEMBLY
SHEET 15	S-14 RTS02A 20' LEG WELDMENT
SHEET 16	S-15 RTS02B 10' SECTION ASSEMBLY
SHEET 17	S-16 RTS02B 10' LEG WELDMENT
SHEET 18	S-17 RTS02 TOP CAP ASSEMBLY

PART NO.		TITLE 150' SELF-SUPPORT TOWER ISP SUPPLIES					
APPROVALS						DATE	
DRAWN	TAM					08/06/19	
CHECKED							
ENG. APPD.							
DO NOT SCALE DRAWING		SIZE D	CAGE CODE	DRAWING NO. T-1	REV.		
		SCALE 1" = 1"			SHEET 1 OF		

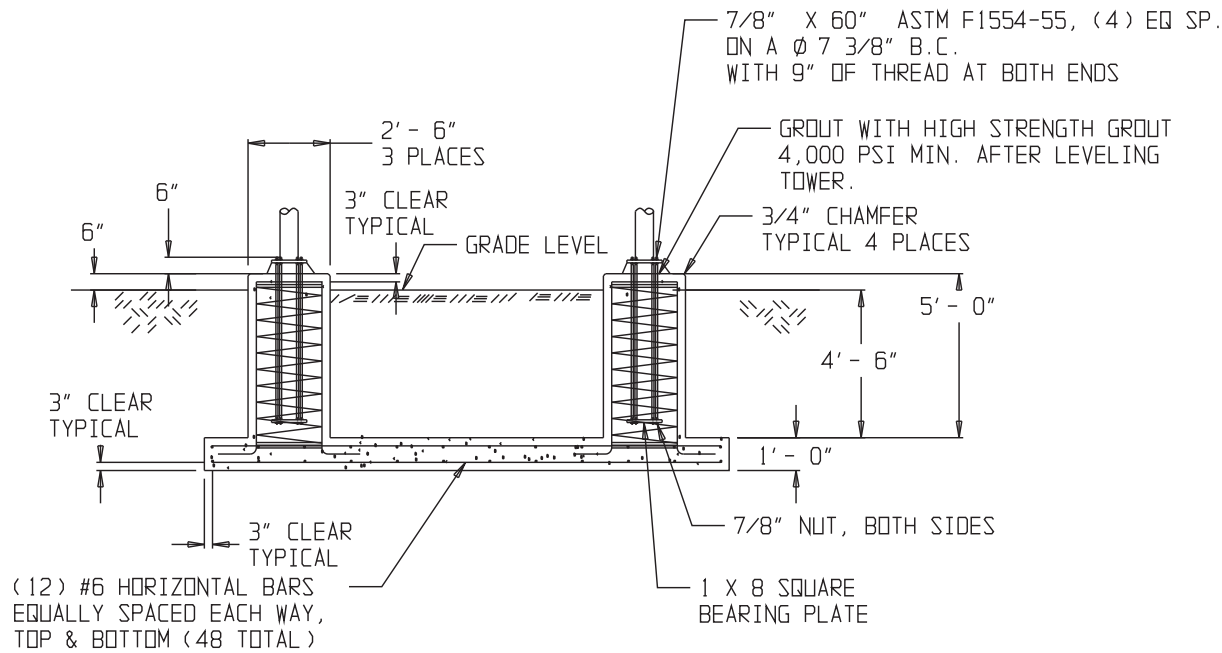
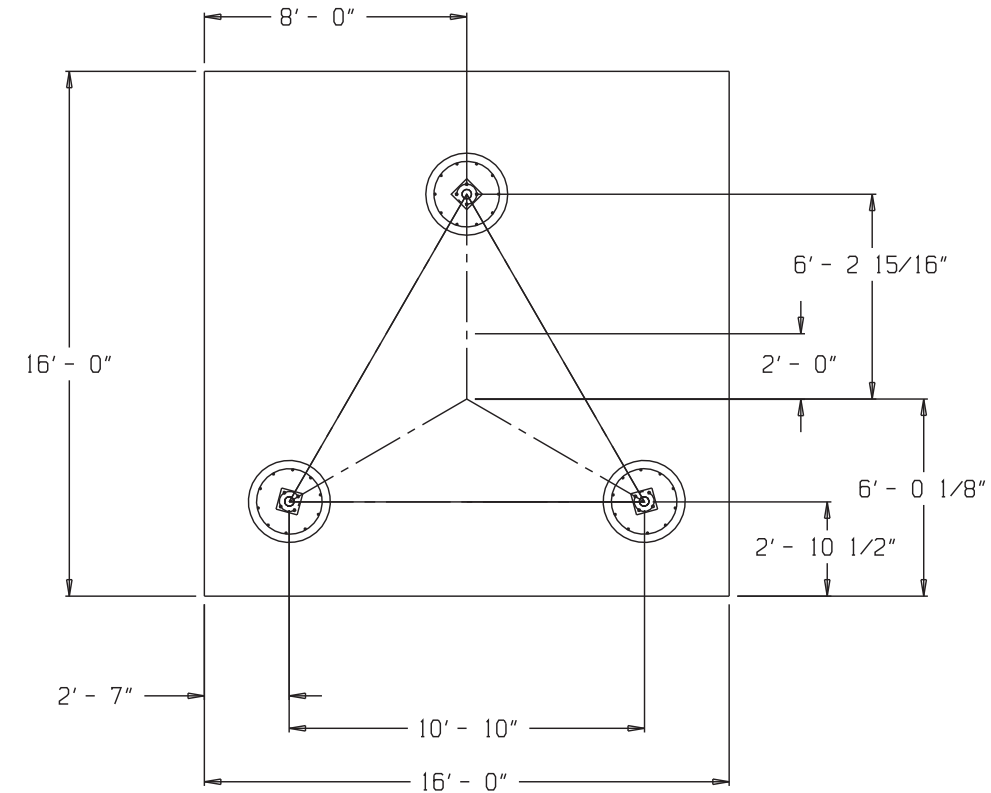


ANTENNA INFORMATION					
ITEM #	ELEVATION	QUANTITY	ANT. TYPE	PROJ'D AREA	LINE SIZE
①	150' -0"	1 EA.	LIGHTNING ROD	1.0 SQ FT	-
②	147' -6"	12 EA.	#HG3-TP-S40 RF ELEMENTS	0.4 SQ FT	1 @ 12/2
③	140' -0"	1 EA.	3' HP MICROWAVE DISH	7.07 SQ FT	1 @ CAT5
④	130' -0"	1 EA.	2' HP MICROWAVE DISH	3.14 SQ FT	1 @ CAT5
⑤	120' -0"	1 EA.	2' HP MICROWAVE DISH	3.14 SQ FT	1 @ CAT5

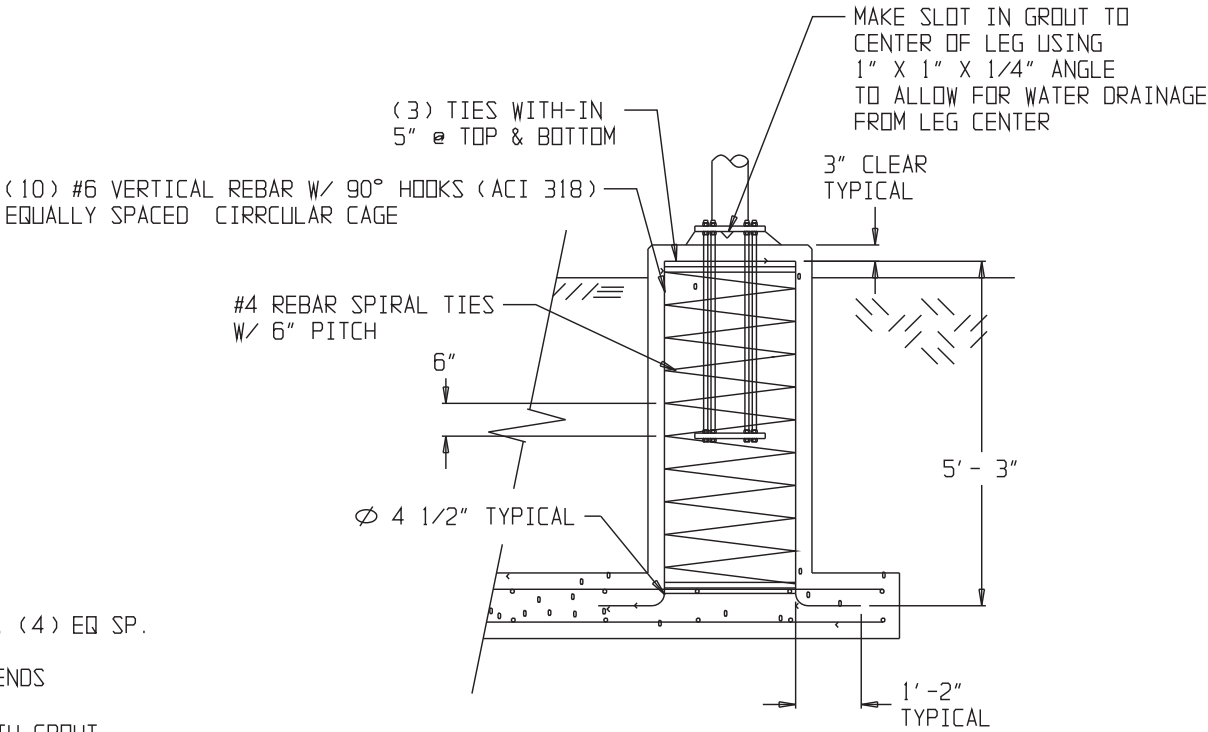
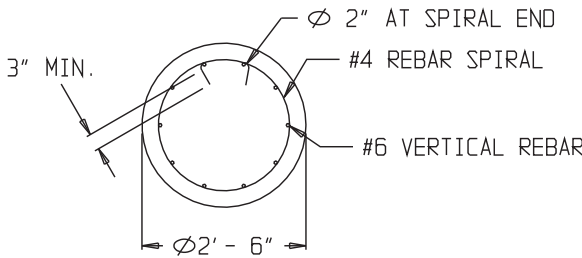
9	1	-	FOUNDATION DETAIL
8	1	-	TOP CAP ASSEMBLY
7	1	-	RTS02B 10' SECTION ASSEMBLY
6	2	-	RTS02A 20' SECTION ASSEMBLY
5	1	-	RTS02 20' SECTION ASSEMBLY
4	1	-	RTT04 20' SECTION ASSEMBLY
3	1	-	RTT06 20' SECTION ASSEMBLY
2	1	-	RTT08 20' SECTION ASSEMBLY
1	1	-	RTT10 20' SECTION ASSEMBLY
ITEM	QTY REQD	PART NO. IDENTIFYING NO.	NOMENCLATURE OR DESCRIPTION
PARTS LIST			
UNLESS OTHERWISE SPECIFIED DIMENSIONS ARE IN INCHES TOLERANCES ARE: DECIMALS .XX±.06 .XXX±.030 STRAIGHT EDGE .008 MATERIAL FINISH DO NOT SCALE DRAWING		PART NO.	
		APPROVALS	DATE
		DRAWN TAM	08/06/19
		CHECKED	
		ENG. APPD.	
		TITLE 150' SELF SUPPORT TOWER ISP SUPPLIES	
		SIZE D	CAGE CODE DRAWING NO. S-1
		SCALE NONE	REV. SHEET 1 OF

GENERAL CONCRETE AND FOUNDATION NOTES:

1. THE CONCRETE SHALL CONSIST OF 6 SACKS OF CEMENT PER CUBIC YARD, 1" AGGREGATE MAXIMUM, AND 6.0 GALLONS OF WATER PER 94 LB SACK OF TYPE 2 CEMENT, FOR A MINIMUM COMPRESSIVE STRENGTH OF 3000 PSI AT 28 DAYS. THE SLUMP SHALL NOT EXCEED 4.5" PLUS OR MINUS 1 INCH.
2. FABRICATIONS DETAILS SHALL CONFORM TO THE A.C.I. MANUALS OF STANDARD PRACTICE.
3. SPLICES IN REINFORCING STEEL SHALL BE LAPPED 40 DIAMETERS MINIMUM UNLESS OTHERWISE NOTED.
4. ALL REBAR, ANCHOR BOLTS, BEARING PLATES AND OTHER MEMBERS OF THE FOUNDATIONS SHALL BE WELL SECURED PRIOR TO POURING CONCRETE.
5. ALL CONCRETE SHALL HAVE A BROOM FINISH.
6. ANCHOR BOLTS TO BE ASTM F1554-55.
7. ALL REINFORCING STEEL SHALL HAVE A MINIMUM CONCRETE COVER OF 3" FOR SURFACES POURED AGAINST EARTH AND 2" OF FORMED SURFACES EXPOSED TO GROUND OR WEATHER.
8. ALL WORK SHALL CONFORM TO THE 2016 CALIFORNIA BUILDING CODE.
9. THE SOIL SHALL MEET OR EXCEED THE SOIL PER THE CBC 2016, TYPE 5.
10. NO WELDING OF REBAR IN REQUIRED WITH THE EXCEPTION OF TACKING THE REBAR CAGE. NO SPECIAL INSPECTION IS REQUIRED.
11. THE BOTTOM OF THE EXCAVATION SHALL BE CLEAR AND FREE OF LOOSE SOIL. SAFETY PRECAUTIONS SHALL BE USED TO INSURE THE EXCAVATION PRESENTS NO HAZARDS TO OTHERS IF LEFT UNATTENDED.
12. THE FOOTING SHALL PENETRATE AND BEAR UPON UNDISTURBED SOIL OR BACK FILL SOIL HAVING A MINIMUM IN PLACE DENSITY OF 90 % OF THE MAXIMUM DENSITY AT OPTIMUM MOISTURE CONTENT ESTABLISHED BY ASTM-D1557-70.
13. REINFORCING STEEL SHALL MEET ASTM A615-76A GRADE 40 FOR #5 AND SMALLER AND GRADE 60 FOR #6 AND LARGER.



CONCRETE:11.7 CUBIC YARDS



TYPICAL PIER DETAIL

4	3	-	TEMPLATE, 10 GA X 8 SQUARE
3	3	-	BEARING PLATE, 1 X 8 SQUARE
2	60	-	NUT, Ø 7/8-9 UNC HEX GALV
1	12	-	ANCHOR BOLT, Ø 7/8 UNC X 60" W/9" THREAD BOTH ENDS ASTM F1554-55
ITEM QTY REQD PART NUMBER			NOMENCLATURE OR DESCRIPTION
PARTS LIST			

PART NO.		APPROVALS		DATE		TITLE	
DRAWN		TAM		03/21/19		TKD-150'-307-6L SS TOWER	
CHECKED						PAD FOUNDATION	
ENG. APPD.						UNITED STATES MARINE CORP	
DO NOT SCALE DRAWING		SIZE		CAGE CODE		DRAWING NO. -	
		SCALE NONE				S-2	
						REV. -	
						SHEET 3 OF	

NOTES:

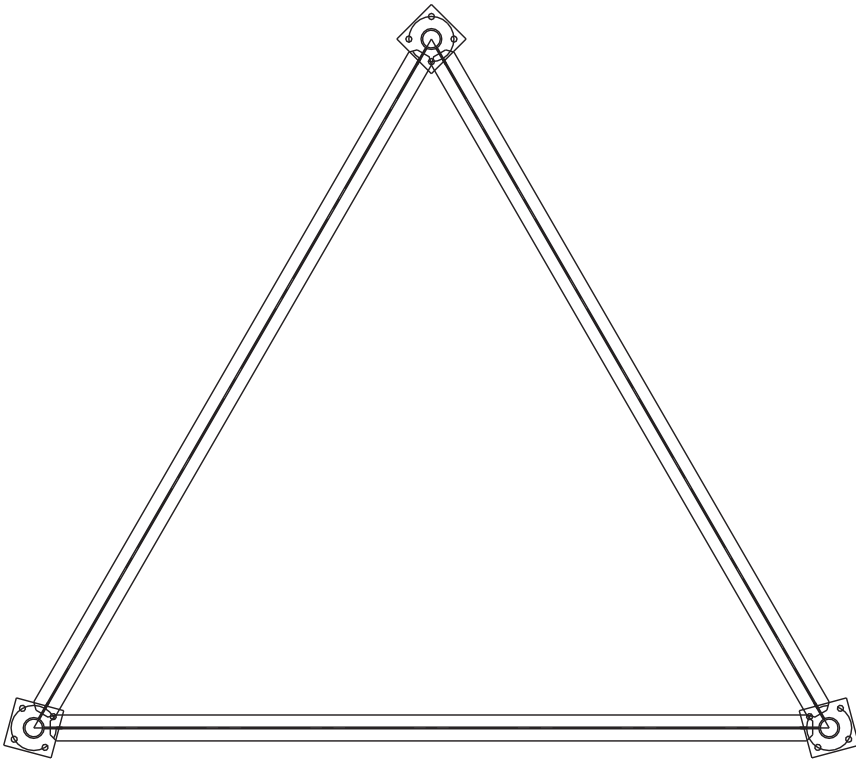
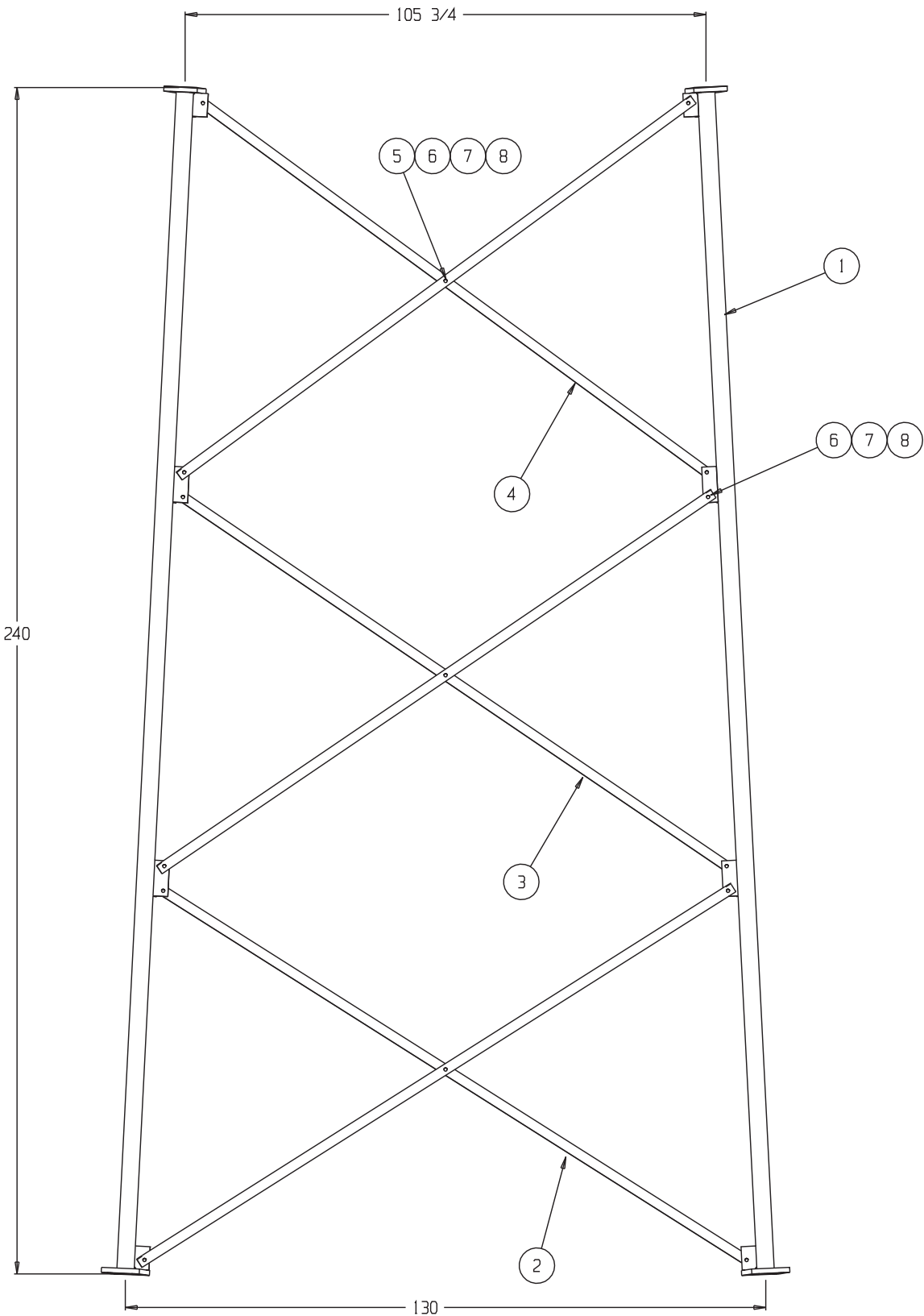
1. ALL ASTM A325 BOLTS ARE TO BE TIGHTENED TO A SNUG TIGHT CONDITION.

A SNUG TIGHT CONDITION IS DEFINED AS THE TIGHTNESS THAT EXISTS WHEN ALL PLIES IN A JOINT ARE IN FIRM CONTACT. THIS MAY BE ATTAINED BY A FEW IMPACTS OF AN IMPACT WRENCH OR THE FULL EFFORT OF A MAN USING AN ORDINARY SPUD WRENCH.

REF.: "SPECIFICATION FOR ASTM A325 OR A490 BOLTS" MANUAL OF STEEL CONSTRUCTION. ALLOWABLE STRESS DESIGN. AISC. 14TH EDITION, 2011. PAGE 16.2xi.

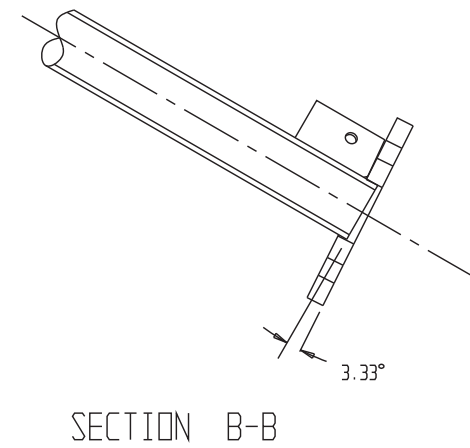
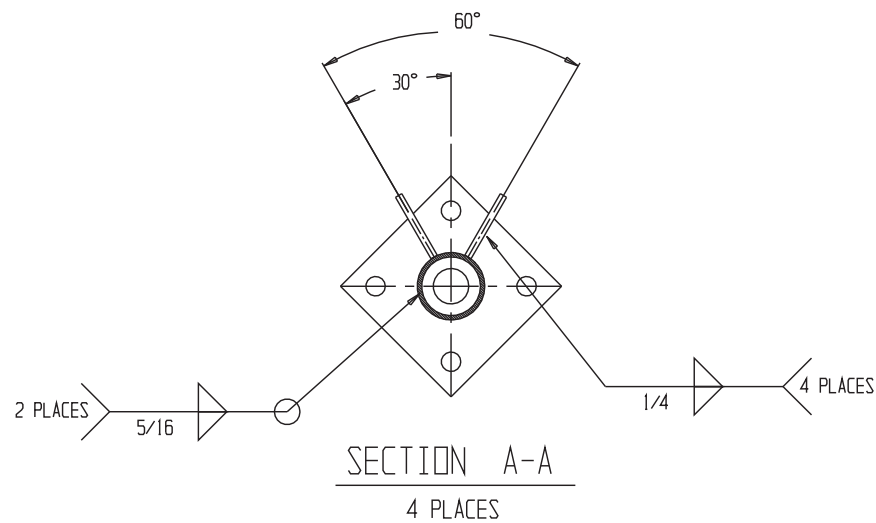
2. TOWER LEG TO BE ORIENTED SUCH THAT PART NUMBER IS AT THE BASE OF SECTION.

3. BASE SECTIONS DO NOT INCLUDE FLANGE BOLTS.

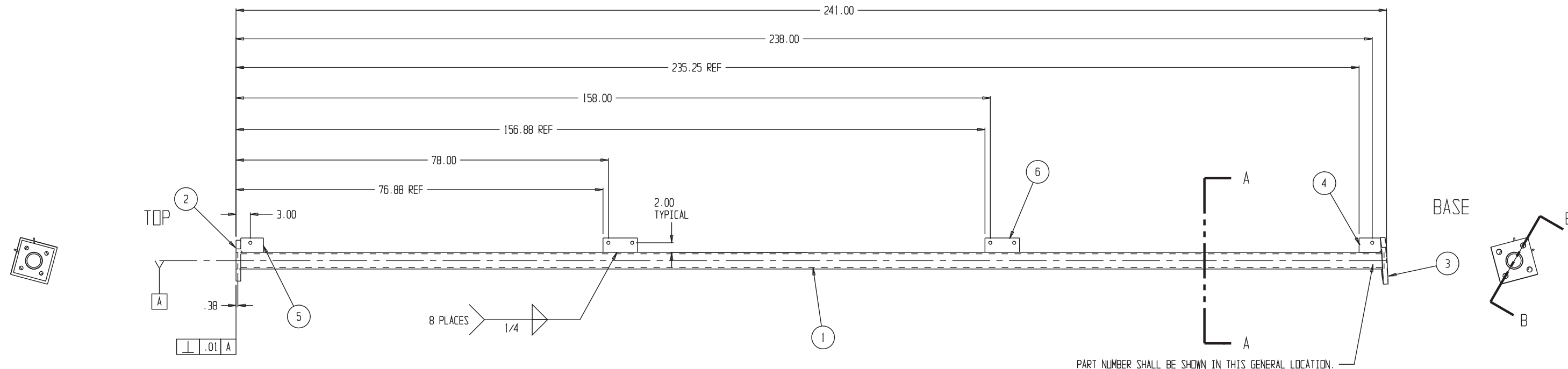


9	-	.	-
8	45	.	LOCKWASHER, 5/8 GALV
7	45	.	NUT, 5/8-11 UNC HEAVY HEX GALV
6	45	.	BOLT, 5/8-11 UNC HEX HD ASTM A325 GALV X 1 1/2
5	9	.	SPACER, 1/4 X 2 W/ 11/16 HOLE
4	6	.	TOP DIAGONAL, 2 X 2 X 1/8 ANGLE X 129 1/4"
3	6	.	MID DIAGONAL, 2 X 2 X 1/8 ANGLE X 135 27/32"
2	6	.	BOTTOM DIAGONAL, 2 X 2 X 1/8 ANGLE X 142 19/32"
1	3	.	LEG, HSS Ø 3.5" X .300 WALL ASTM A500 GR B 50 KSI
ITEM	QTY REQD	PART NO. IDENTIFYING NO.	NOMENCLATURE OR DESCRIPTION
PARTS LIST			
UNLESS OTHERWISE SPECIFIED DIMENSIONS ARE IN INCHES TOLERANCES ARE:		PART NO.	
DECIMALS .XX±.06 .XXX±.030		APPROVALS	DATE
STRAIGHT EDGE .008		DRAWN	08/07/19
MATERIAL		CHECKED	
FINISH		ENG. APPD.	
DO NOT SCALE DRAWING			
TITLE			
RTT10 20' SECTION ASSEMBLY			
SIZE	CAGE CODE	DRAWING NO.	REV.
D		S-3	
SCALE NONE		SHEET 4 OF	

1. DIMENSIONS OF THE BEVEL IN DETAILS B-B ARE FROM THE CENTER OF THE FLANGE TO THE EDGE OF THE FLANGE.
2. ALL WELDING SHALL BE DONE IN ACCORDANCE WITH AMERICAN WELDING SOCIETY'S STRUCTURAL WELDING CODE, D1.1, THE LATEST REVISION.
3. THE PART NUMBER SHALL BE PERMANENTLY ATTACHED (STAMPED, WELDED LETTERING, STAMPED ON A PLATE THAT IS WELDED TO THE MEMBER, ECT.) TO THE MEMBER BEFORE ALL PROTECTIVE COATINGS (GALVANIZING, PAINT, ECT.) ARE APPLIED. THE PART NUMBER SHALL HAVE A MINIMUM CHARACTER HEIGHT OF 1/2 INCH, BE LEGIBLE, AND CLEARLY VISIBLE TO AN INSPECTOR AFTER ERECTION.
4. THE LEG SHALL BE GALVANIZED IN ACCORDANCE WITH ASTM A123.
5. THE SIZE OF THE WELD SPECIFIED ARE THE MINIMUM SIZE WELD ALLOWED.
6. THE PART NUMBER SHALL BE LOCATED NEAR THE BASE OF THE TOWER LEG.



				BILL OF MATERIAL
ITEM	QTY	UNIT	PART NO.	
1	1	EA.	-	HSS, Ø 3.50 X .300 WALL ASTM A500 GR B X 240 1/4"
2	1	EA.	-	TOP FLANGE, 1 X 7 SQ.
3	1	EA.	-	BOTTOM FLANGE, 1 X 8 SQ.
4	2	EA.	-	BOTTOM EAR, 1/4 X 3 X 4 5/8
5	2	EA.	-	TOP EAR, 1/4 X 3 X 4 3/4
6	4	EA.	-	MID EAR, 1/4 X 3 X 7 1/4



PART NUMBER SHALL BE SHOWN IN THIS GENERAL LOCATION.

08/20/19 REVISED PER SOLIDWORKS MODEL

UNLESS OTHERWISE SPECIFIED DIMENSIONS ARE IN INCHES TOLERANCES ARE:		PART NO.		TITLE			
DECIMALS XX±.06 XXX±.030	ANGLES ± 1/2	APPROVALS	DATE				
STRAIGHT EDGE .008		DRAWN	08/20/19	RTT10 LEG WELDMENT			
MATERIAL ASTM A36 STEEL		CHECKED					
FINISH ASTM A123 GALV		ENG. APPD.		SIZE D	CAGE CODE	DRAWING NO. S-4	REV
DO NOT SCALE DRAWING				SCALE	NONE		SHEET 5 OF

NOTES:

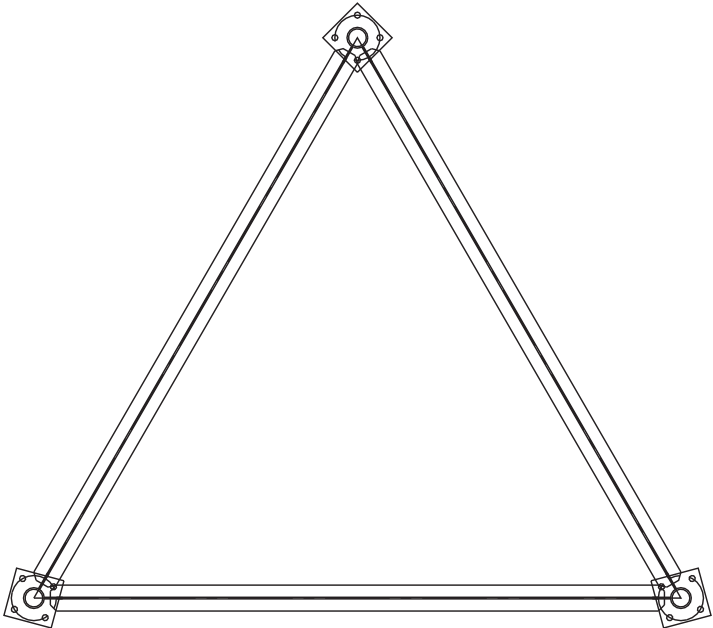
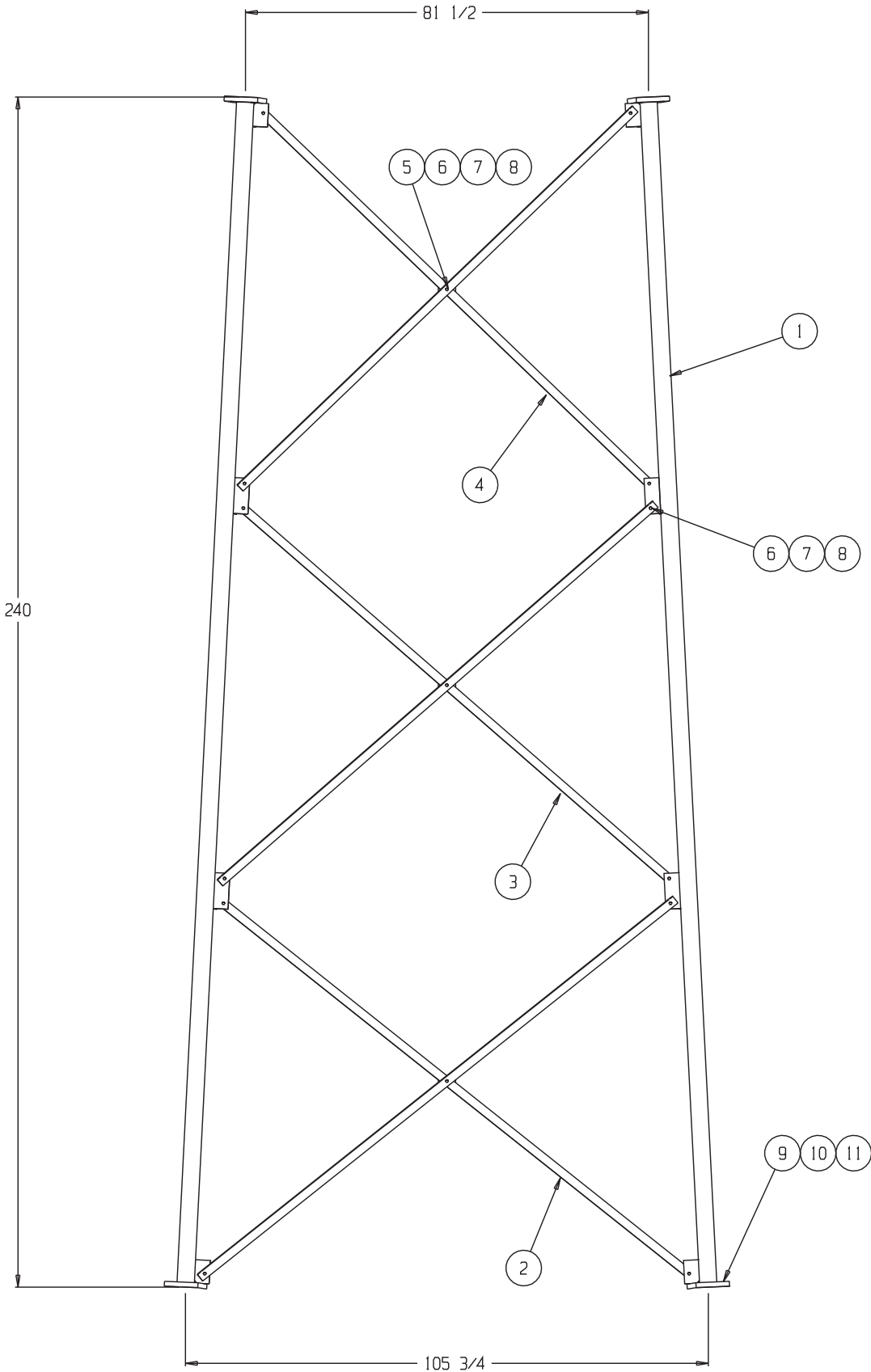
1. ALL ASTM A325 BOLTS ARE TO BE TIGHTENED TO A SNUG TIGHT CONDITION.

A SNUG TIGHT CONDITION IS DEFINED AS THE TIGHTNESS THAT EXISTS WHEN ALL PLIES IN A JOINT ARE IN FIRM CONTACT. THIS MAY BE ATTAINED BY A FEW IMPACTS OF AN IMPACT WRENCH OR THE FULL EFFORT OF A MAN USING AN ORDINARY SPUD WRENCH.

REF.: "SPECIFICATION FOR ASTM A325 OR A490 BOLTS" MANUAL OF STEEL CONSTRUCTION. ALLOWABLE STRESS DESIGN. AISC. 14TH EDITION, 2011. PAGE 16.2xi.

2. TOWER LEG TO BE ORIENTED SUCH THAT PART NUMBER IS AT THE BASE OF SECTION.

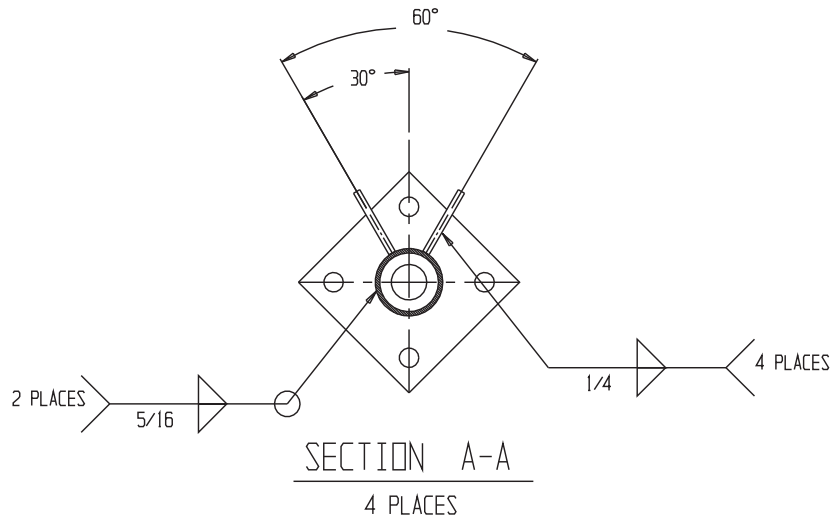
3. BASE SECTIONS DO NOT INCLUDE FLANGE BOLTS.



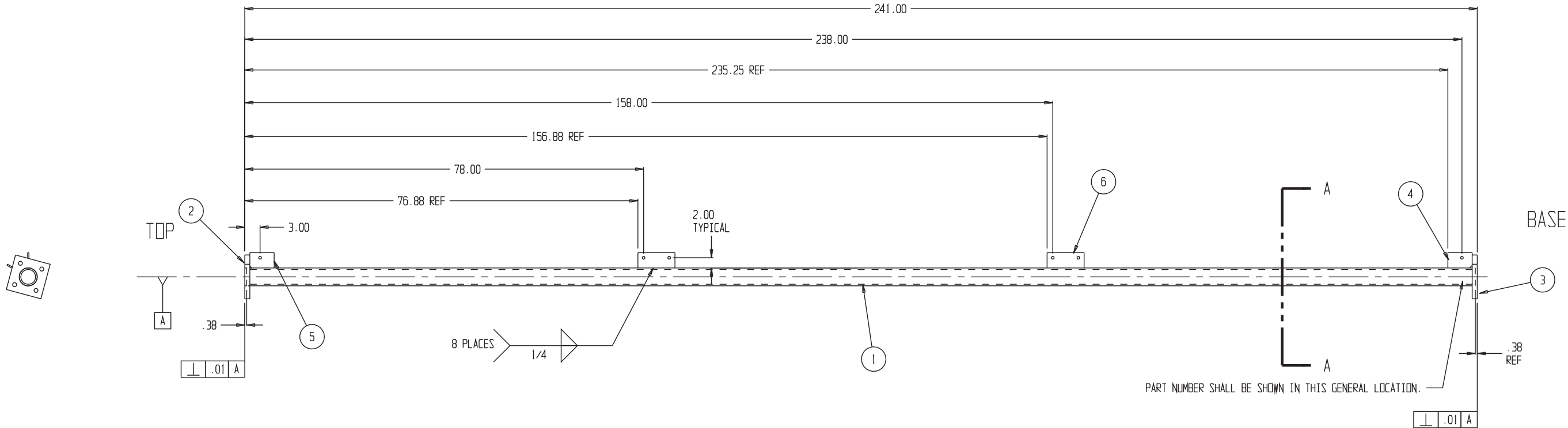
11	12	.	LOCKWASHER, 3/4 GALV
10	12	.	NUT, 3/4-10 UNC HEAVY HEX GALV
9	12	.	BOLT, 3/4-10 UNC HEX HD ASSTM A325 GALV X 3 1/2
8	45	.	LOCKWASHER, 1/2 GALV
7	45	.	NUT, 1/2-13 UNC HEAVY HEX GALV
6	45	.	BOLT, 1/2-13 UNC HEX HD ASTM A325 GALV X 1 1/2
5	9	.	SPACER, 1/4 X 1 3/4 W/ 9/16 HOLE
4	6	.	TOP DIAGONAL, 1 3/4 X 1 3/4 X 1/8 ANGLE X 110 21/32"
3	6	.	MID DIAGONAL, 1 3/4 X 1 3/4 X 1/8 ANGLE X 116 19/32"
2	6	.	BOTTOM DIAGONAL, 1 3/4 X 1 3/4 X 1/8 ANGLE X 122 25/32"
1	3	.	LEG, HSS Ø 3.5" X .300 WALL ASTM A500 GR B 50 KSI
ITEM	QTY REQD	PART NO. IDENTIFYING NO.	NOMENCLATURE OR DESCRIPTION
PARTS LIST			
UNLESS OTHERWISE SPECIFIED DIMENSIONS ARE IN INCHES TOLERANCES ARE:			
DECIMALS .XX±.06 .XXX±.030		ANGLES ± 1/2	
STRAIGHT EDGE .008			
MATERIAL		PART NO.	
		APPROVALS	DATE
		DRAWN	08/07/19
		CHECKED	
FINISH		ENG. APPD.	
DO NOT SCALE DRAWING			
TITLE			
RTT08 20' SECTION ASSEMBLY			
SIZE	CAGE CODE	DRAWING NO.	REV.
D		S-5	
SCALE NONE		SHEET 6 OF	

NOTES:

- DIMENSIONS OF THE BEVEL IN DETAILS B-B ARE FROM THE CENTER OF THE FLANGE TO THE EDGE OF THE FLANGE.
- ALL WELDING SHALL BE DONE IN ACCORDANCE WITH AMERICAN WELDING SOCIETY'S STRUCTURAL WELDING CODE, D1.1, THE LATEST REVISION.
- THE PART NUMBER SHALL BE PERMANENTLY ATTACHED (STAMPED, WELDED LETTERING, STAMPED ON A PLATE THAT IS WELDED TO THE MEMBER, ECT.) TO THE MEMBER BEFORE ALL PROTECTIVE COATINGS (GALVANIZING, PAINT, ECT.) ARE APPLIED. THE PART NUMBER SHALL HAVE A MINIMUM CHARACTER HEIGHT OF 1/2 INCH, BE LEGIBLE, AND CLEARLY VISIBLE TO AN INSPECTOR AFTER ERECTION.
- THE LEG SHALL BE GALVANIZED IN ACCORDANCE WITH ASTM A123.
- THE SIZE OF THE WELD SPECIFIED ARE THE MINIMUM SIZE WELD ALLOWED.
- THE PART NUMBER SHALL BE LOCATED NEAR THE BASE OF THE TOWER LEG.



BILL OF MATERIAL				
ITEM	QTY	UNIT	PART NO.	
1	1	EA.	-	HSS, Ø 3.50 X .300 WALL ASTM A500 GR B X 240 1/4"
2	1	EA.	-	TOP FLANGE, 1 X 7 SQ.
3	1	EA.	-	BOTTOM FLANGE, 1 X 7 SQ.
4	2	EA.	-	BOTTOM EAR, 1/4 X 3 X 4 3/4
5	2	EA.	-	TOP EAR, 1/4 X 3 X 4 3/4
6	4	EA.	-	MID EAR, 1/4 X 3 X 7 1/4



08/20/19 REVISED PER SOLIDWORKS MODEL

UNLESS OTHERWISE SPECIFIED DIMENSIONS ARE IN INCHES TOLERANCES ARE:		PART NO.	
DECIMALS .XX±.06 .XXX±.030	ANGLES ± 1/2	APPROVALS	DATE
STRAIGHT EDGE .008		DRAWN	08/20/19
MATERIAL ASTM A36 STEEL		CHECKED	
FINISH ASTM A123 GALV		ENG. APPD.	
DO NOT SCALE DRAWING			

TITLE RTT08 LEG WELDMENT			
SIZE D	CAGE CODE	DRAWING NO. S-6	REV.
SCALE NONE			SHEET 7 OF

NOTES:

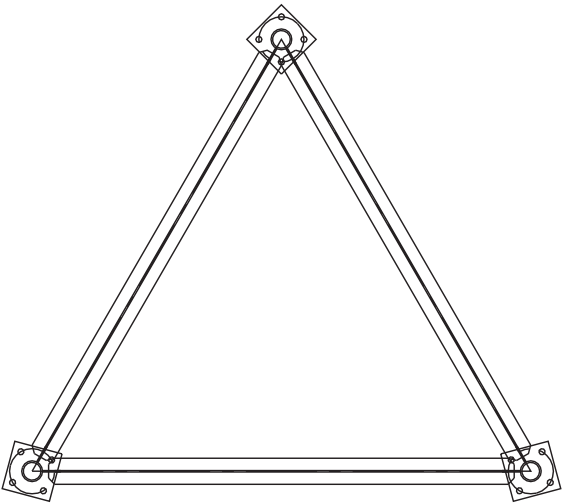
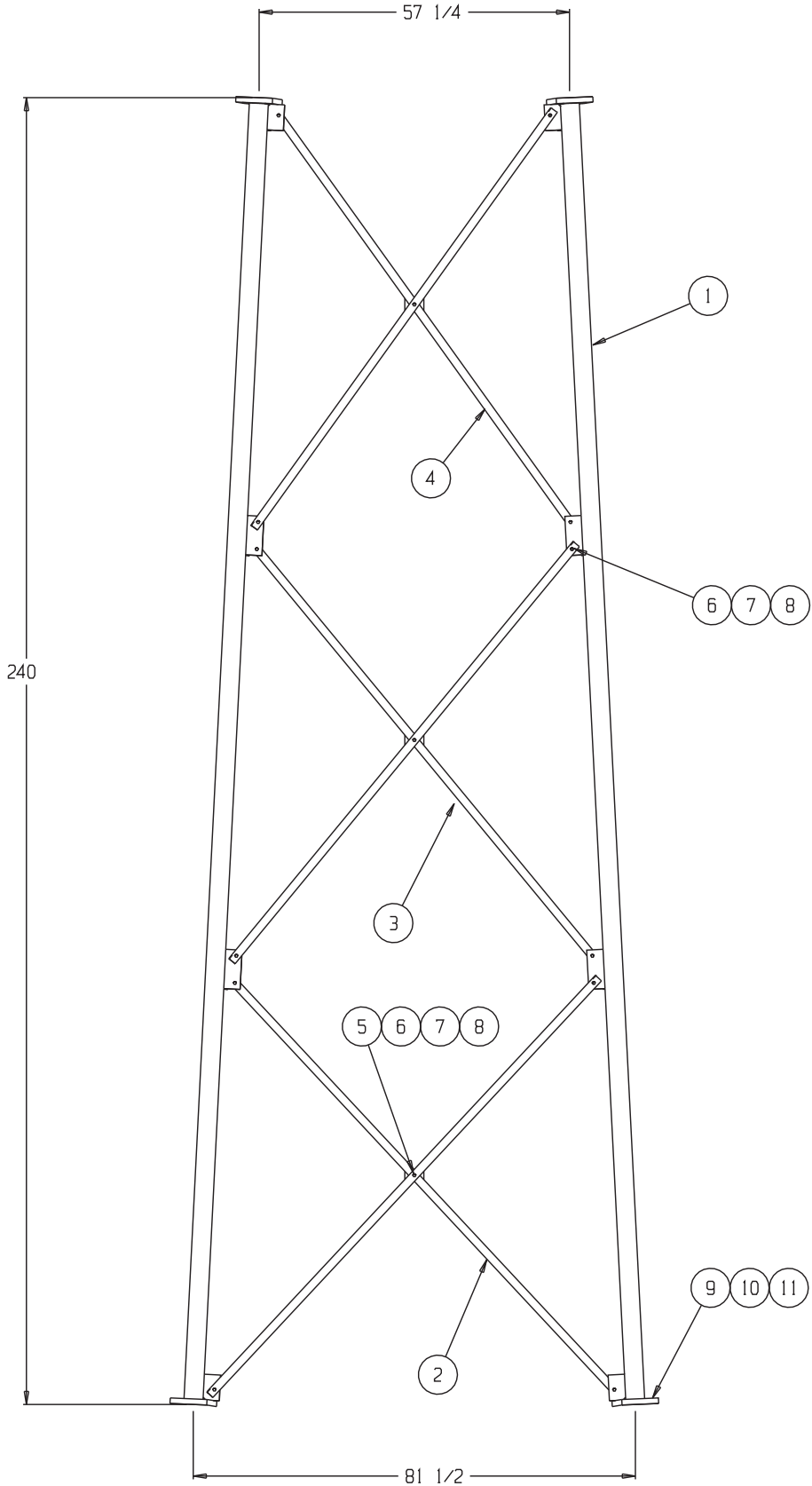
1. ALL ASTM A325 BOLTS ARE TO BE TIGHTENED TO A SNUG TIGHT CONDITION.

A SNUG TIGHT CONDITION IS DEFINED AS THE TIGHTNESS THAT EXISTS WHEN ALL PLIES IN A JOINT ARE IN FIRM CONTACT. THIS MAY BE ATTAINED BY A FEW IMPACTS OF AN IMPACT WRENCH OR THE FULL EFFORT OF A MAN USING AN ORDINARY SPUD WRENCH.

REF.: "SPECIFICATION FOR ASTM A325 OR A490 BOLTS" MANUAL OF STEEL CONSTRUCTION. ALLOWABLE STRESS DESIGN. AISC. 14TH EDITION, 2011. PAGE 16.2xi.

2. TOWER LEG TO BE ORIENTED SUCH THAT PART NUMBER IS AT THE BASE OF SECTION.

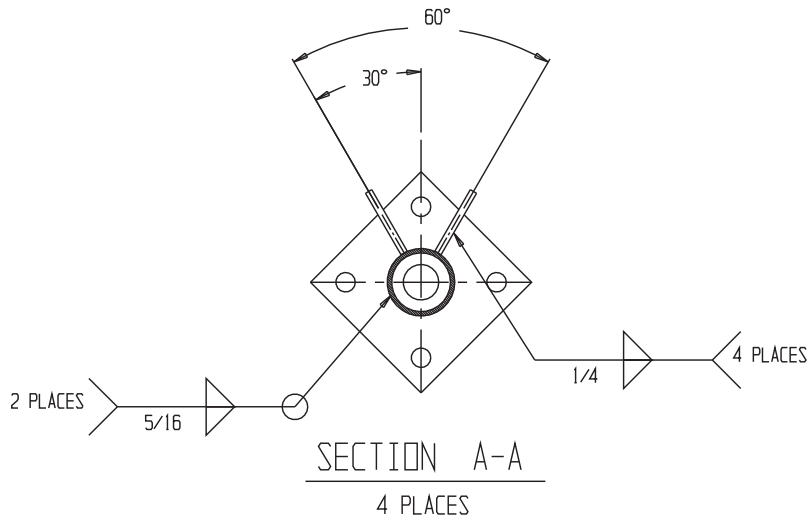
3. BASE SECTIONS DO NOT INCLUDE FLANGE BOLTS.



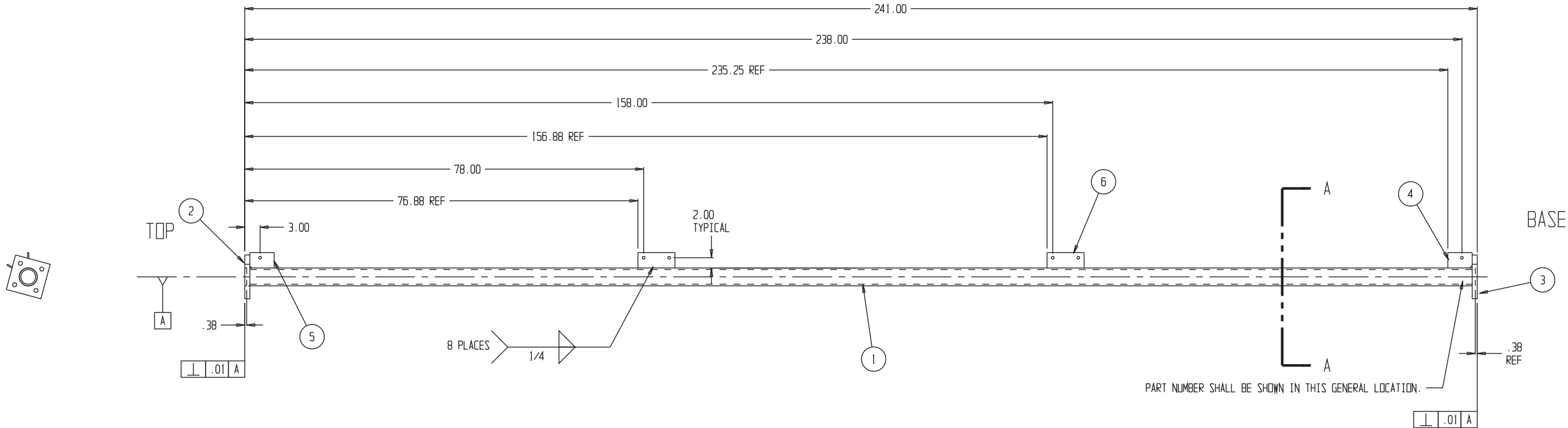
11	12	.	LOCKWASHER, 3/4 GALV
10	12	.	NUT, 3/4-10 UNC HEAVY HEX GALV
9	12	.	BOLT, 3/4-10 UNC HEX HD ASSTM A325 GALV X 3 1/2
8	45	.	LOCKWASHER, 1/2 GALV
7	45	.	NUT, 1/2-13 UNC HEAVY HEX GALV
6	45	.	BOLT, 1/2-13 UNC HEX HD ASTM A325 GALV X 1 1/2
5	9	.	SPACER, 1/4 X 1 1/2 W/ 9/16 HOLE
4	6	.	TOP DIAGONAL, 1 1/2 X 1 1/2 X 1/8 ANGLE X 94 11/16"
3	6	.	MID DIAGONAL, 1 1/2 X 1 1/2 X 1/8 ANGLE X 99 5/8"
2	6	.	BOTTOM DIAGONAL, 1 1/2 X 1 1/2 X 1/8 ANGLE X 104 15/16"
1	3	.	LEG, HSS Ø 3.5" X .300 WALL ASTM A500 GR B 50 KSI
ITEM	QTY REQD	PART NO. IDENTIFYING NO.	NOMENCLATURE OR DESCRIPTION
PARTS LIST			
UNLESS OTHERWISE SPECIFIED DIMENSIONS ARE IN INCHES TOLERANCES ARE:			
DECIMALS .XX±.06 .XXX±.030	ANGLES ± 1/2	PART NO.	
STRAIGHT EDGE .008		APPROVALS	DATE
MATERIAL		DRAWN	08/07/19
		CHECKED	
FINISH		ENG. APPD.	
DO NOT SCALE DRAWING			
TITLE			
RTT06 20' SECTION ASSEMBLY			
SIZE	CAGE CODE	DRAWING NO.	REV.
D		S-7	
SCALE	NONE		SHEET 8 OF

NOTES:

- DIMENSIONS OF THE BEVEL IN DETAILS B-B ARE FROM THE CENTER OF THE FLANGE TO THE EDGE OF THE FLANGE.
- ALL WELDING SHALL BE DONE IN ACCORDANCE WITH AMERICAN WELDING SOCIETY'S STRUCTURAL WELDING CODE, D1.1, THE LATEST REVISION.
- THE PART NUMBER SHALL BE PERMANENTLY ATTACHED (STAMPED, WELDED LETTERING, STAMPED ON A PLATE THAT IS WELDED TO THE MEMBER, ECT.) TO THE MEMBER BEFORE ALL PROTECTIVE COATINGS (GALVANIZING, PAINT, ECT.) ARE APPLIED. THE PART NUMBER SHALL HAVE A MINIMUM CHARACTER HEIGHT OF 1/2 INCH, BE LEGIBLE, AND CLEARLY VISIBLE TO AN INSPECTOR AFTER ERECTION.
- THE LEG SHALL BE GALVANIZED IN ACCORDANCE WITH ASTM A123.
- THE SIZE OF THE WELD SPECIFIED ARE THE MINIMUM SIZE WELD ALLOWED.
- THE PART NUMBER SHALL BE LOCATED NEAR THE BASE OF THE TOWER LEG.



BILL OF MATERIAL				
ITEM	QTY	UNIT	PART NO.	
1	1	EA.	-	HSS, Ø 3.50 X .300 WALL ASTM A500 GR B X 240 1/4"
2	1	EA.	-	TOP FLANGE, 1 X 7 SQ.
3	1	EA.	-	BOTTOM FLANGE, 1 X 7 SQ.
4	2	EA.	-	BOTTOM EAR, 1/4 X 3 X 4 3/4
5	2	EA.	-	TOP EAR, 1/4 X 3 X 4 3/4
6	4	EA.	-	MID EAR, 1/4 X 3 X 7 1/4



08/20/19 REVISED PER SOLIDWORKS MODEL

UNLESS OTHERWISE SPECIFIED DIMENSIONS ARE IN INCHES TOLERANCES ARE:		PART NO.	
DECIMALS .XX±.06 .XXX±.030	ANGLES ± 1/2	APPROVALS	DATE
STRAIGHT EDGE .008		DRAWN	08/20/19
MATERIAL ASTM A36 STEEL		CHECKED	
FINISH ASTM A123 GALV		ENG. APPD.	
DO NOT SCALE DRAWING			

TITLE RTT06 LEG WELDMENT			
SIZE D	CAGE CODE	DRAWING NO. S-8	REV.
SCALE NONE			SHEET 9 OF

NOTES:

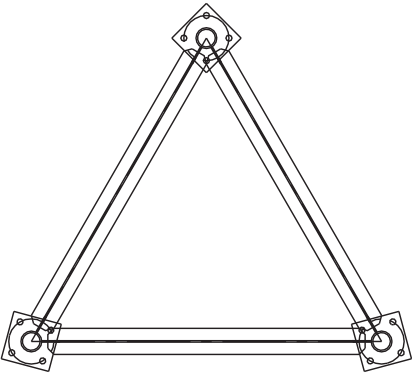
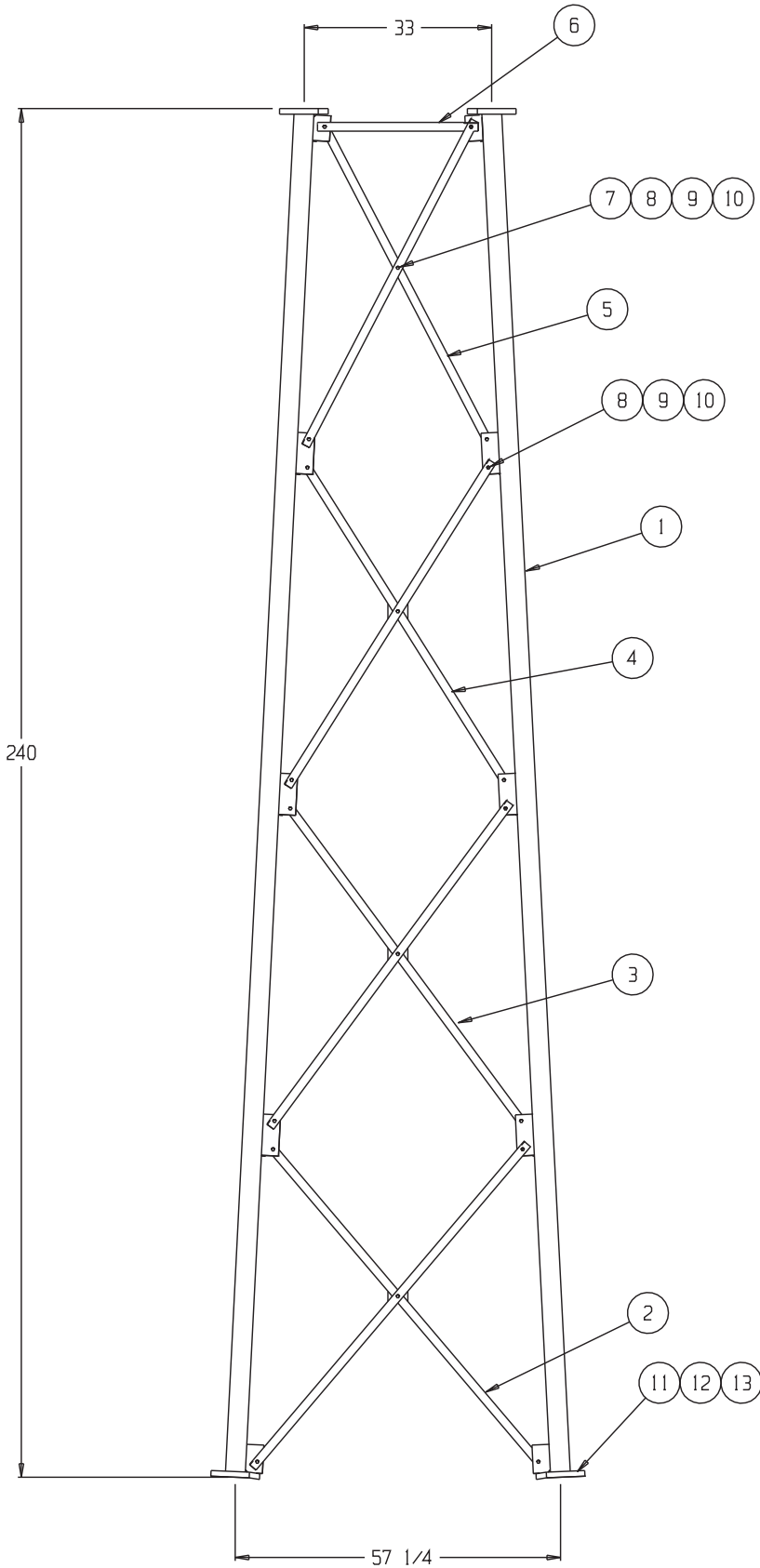
1. ALL ASTM A325 BOLTS ARE TO BE TIGHTENED TO A SNUG TIGHT CONDITION.

A SNUG TIGHT CONDITION IS DEFINED AS THE TIGHTNESS THAT EXISTS WHEN ALL PLIES IN A JOINT ARE IN FIRM CONTACT. THIS MAY BE ATTAINED BY A FEW IMPACTS OF AN IMPACT WRENCH OR THE FULL EFFORT OF A MAN USING AN ORDINARY SPUD WRENCH.

REF.: "SPECIFICATION FOR ASTM A325 OR A490 BOLTS" MANUAL OF STEEL CONSTRUCTION. ALLOWABLE STRESS DESIGN. AISC. 14TH EDITION, 2011. PAGE 16.2xi.

2. TOWER LEG TO BE ORIENTED SUCH THAT PART NUMBER IS AT THE BASE OF SECTION.

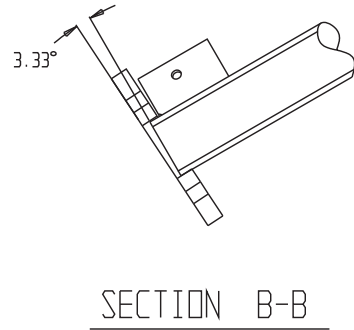
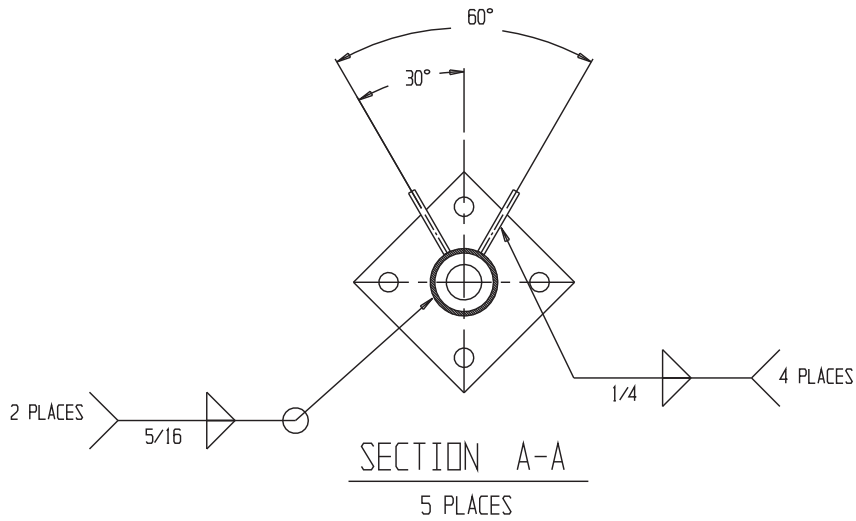
3. BASE SECTIONS DO NOT INCLUDE FLANGE BOLTS.



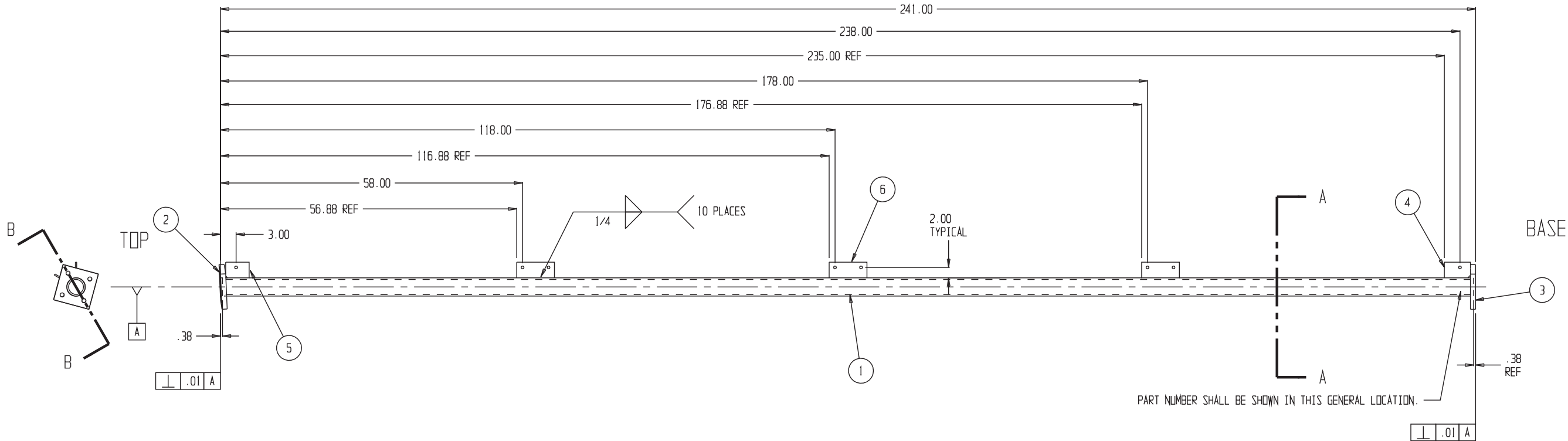
13	12	.	LOCKWASHER, 3/4 GALV
12	12	.	NUT, 3/4-10 UNC HEAVY HEX GALV
11	12	.	BOLT, 3/4-10 UNC HEX HD ASSTM A325 GALV X 3 1/2
10	60	.	LOCKWASHER, 1/2 GALV
9	60	.	NUT, 1/2-13 UNC HEAVY HEX GALV
8	60	.	BOLT, 1/2-13 UNC HEX HD ASTM A325 GALV X 1 1/2
7	12	.	SPACER, 1/4 X 1 1/2 W/ 9/16 HOLE
6	3	.	HORIZONTAL, 1 1/2 X 1 1/2 X 1/8 ANGLE X 28 7/32"
5	6	.	TOP DIAGONAL, 1 1/2 X 1 1/2 X 1/8 ANGLE X 64 3/8"
4	6	.	UPPER MID DIAGONAL, 1 1/2 X 1 1/2 X 1/8 ANGLE X 67 3/8"
3	6	.	LOWER MID DIAGONAL, 1 1/2 X 1 1/2 X 1/8 ANGLE X 70 13/16"
2	6	.	BOTTOM DIAGONAL, 1 1/2 X 1 1/2 X 1/8 ANGLE X 74 9/16"
1	3	.	LEG, HSS Ø 3.5" X .300 WALL ASTM A500 GR B 50 KSI
ITEM QTY PART NO. NOMENCLATURE REQD IDENTIFYING NO. OR DESCRIPTION			
PARTS LIST			
UNLESS OTHERWISE SPECIFIED DIMENSIONS ARE IN INCHES TOLERANCES ARE: DECIMALS ANGLES .XX±.06 .XXX±.030 ± 1/2 STRAIGHT EDGE .008		PART NO.	
		APPROVALS	DATE
MATERIAL		DRAWN	08/07/19
		CHECKED	
FINISH		ENG. APPD.	
DO NOT SCALE DRAWING		TITLE RTT04 20' SECTION ASSEMBLY	
		SIZE D	CAGE CODE DRAWING NO. S-9
		SCALE NONE	REV. SHEET 10 OF

NOTES:

- DIMENSIONS OF THE BEVEL IN DETAILS B-B ARE FROM THE CENTER OF THE FLANGE TO THE EDGE OF THE FLANGE.
- ALL WELDING SHALL BE DONE IN ACCORDANCE WITH AMERICAN WELDING SOCIETY'S STRUCTURAL WELDING CODE, D1.1, THE LATEST REVISION.
- THE PART NUMBER SHALL BE PERMANENTLY ATTACHED (STAMPED, WELDED LETTERING, STAMPED ON A PLATE THAT IS WELDED TO THE MEMBER, ECT.) TO THE MEMBER BEFORE ALL PROTECTIVE COATINGS (GALVANIZING, PAINT, ECT.) ARE APPLIED. THE PART NUMBER SHALL HAVE A MINIMUM CHARACTER HEIGHT OF 1/2 INCH, BE LEGIBLE, AND CLEARLY VISIBLE TO AN INSPECTOR AFTER ERECTION.
- THE LEG SHALL BE GALVANIZED IN ACCORDANCE WITH ASTM A123.
- THE SIZE OF THE WELD SPECIFIED ARE THE MINIMUM SIZE WELD ALLOWED.
- THE PART NUMBER SHALL BE LOCATED NEAR THE BASE OF THE TOWER LEG.



BILL OF MATERIAL				
ITEM	QTY	UNIT	PART NO.	
1	1	EA.	-	HSS, Ø 3.50 X .300 WALL ASTM A500 GR B X 240 1/4"
2	1	EA.	-	TOP FLANGE, 1 X 7 SQ.
3	1	EA.	-	BOTTOM FLANGE, 1 X 7 SQ.
4	2	EA.	-	BOTTOM EAR, 1/4 X 3 X 5
5	2	EA.	-	TOP EAR, 1/4 X 3 X 4 1/2
6	6	EA.	-	MID EAR, 1/4 X 3 X 7 1/4



08/20/19 REVISED PER SOLIDWORKS MODEL

UNLESS OTHERWISE SPECIFIED DIMENSIONS ARE IN INCHES TOLERANCES ARE:		PART NO.	
DECIMALS .XX±.06 .XXX±.030	ANGLES ± 1/2	APPROVALS	DATE
STRAIGHT EDGE .008		DRAWN	08/20/19
MATERIAL ASTM A36 STEEL		CHECKED	
FINISH ASTM A123 GALV		ENG. APPD.	
DO NOT SCALE DRAWING			

TITLE RTT04 LEG WELDMENT			
SIZE D	CAGE CODE	DRAWING NO. S-10	REV.
SCALE NONE	SHEET 11 OF 11		

NOTES:

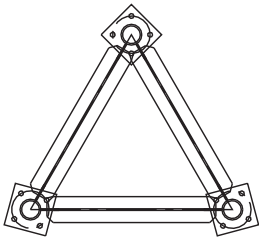
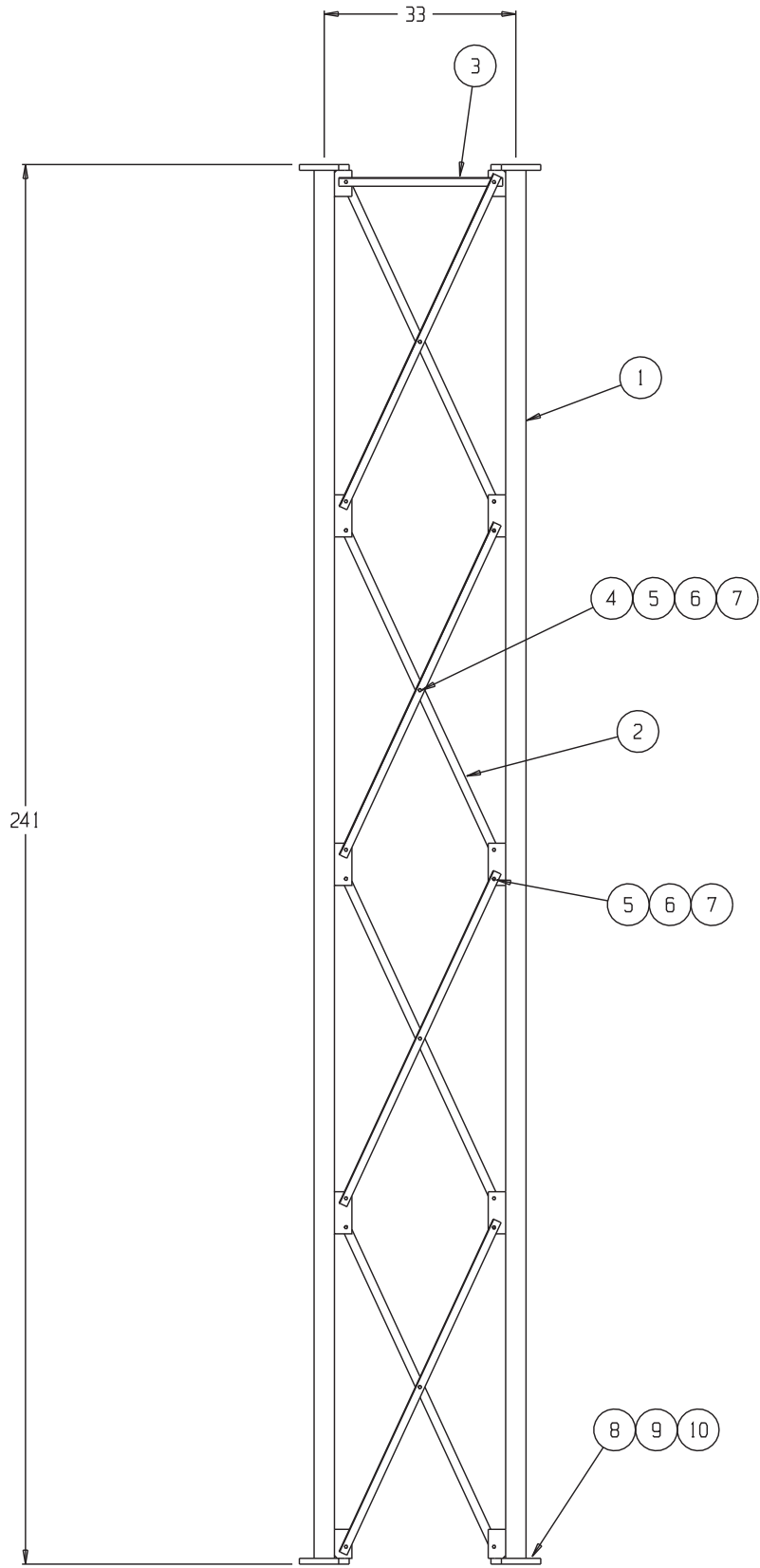
1. ALL ASTM A325 BOLTS ARE TO BE TIGHTENED TO A SNUG TIGHT CONDITION.

A SNUG TIGHT CONDITION IS DEFINED AS THE TIGHTNESS THAT EXISTS WHEN ALL PLIES IN A JOINT ARE IN FIRM CONTACT. THIS MAY BE ATTAINED BY A FEW IMPACTS OF AN IMPACT WRENCH OR THE FULL EFFORT OF A MAN USING AN ORDINARY SPUD WRENCH.

REF.: "SPECIFICATION FOR ASTM A325 OR A490 BOLTS" MANUAL OF STEEL CONSTRUCTION. ALLOWABLE STRESS DESIGN. AISC. 14TH EDITION, 2011. PAGE 16.2xi.

2. TOWER LEG TO BE ORIENTED SUCH THAT PART NUMBER IS AT THE BASE OF SECTION.

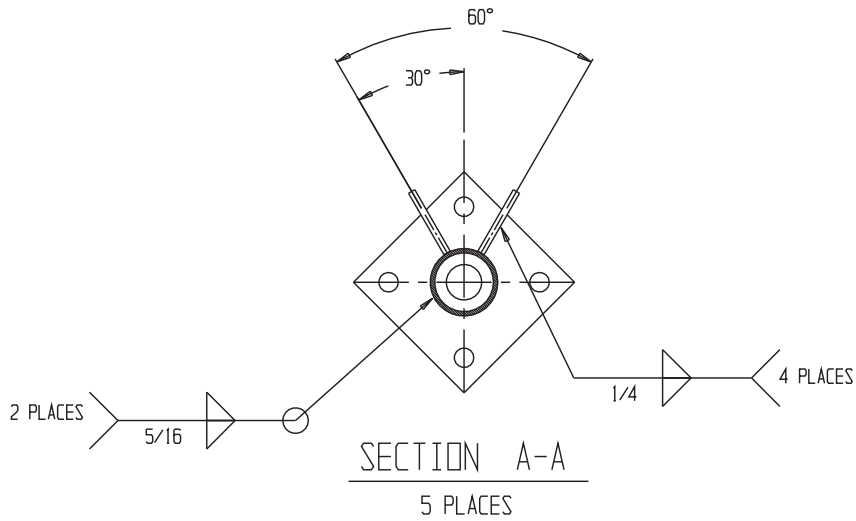
3. BASE SECTIONS DO NOT INCLUDE FLANGE BOLTS.



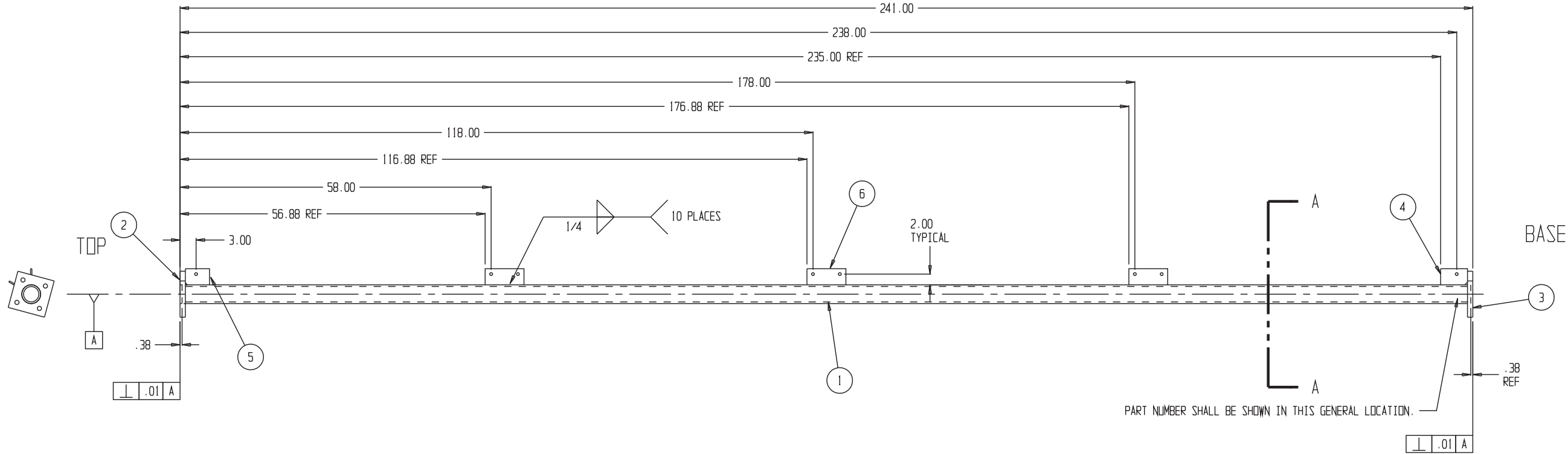
10	12	.	LOCKWASHER, 3/4 GALV
9	12	.	NUT, 3/4-10 UNC HEAVY HEX GALV
8	12	.	BOLT, 3/4-10 UNC HEX HD ASSTM A325 GALV X 3 1/2
7	60	.	LOCKWASHER, 1/2 GALV
6	60	.	NUT, 1/2-13 UNC HEAVY HEX GALV
5	60	.	BOLT, 1/2-13 UNC HEX HD ASTM A325 GALV X 1 1/2
4	12	.	SPACER, 1/4 X 1 1/2 W/ 9/16 HOLE
3	3	.	HORIZONTAL, 1 1/2 X 1 1/2 X 1/8 ANGLE X 28"
2	24	.	DIAGONAL, 1 1/2 X 1 1/2 X 1/8 ANGLE X 63 1/8"
1	3	.	LEG, HSS Ø 3.5" X .300 WALL ASTM A500 GR B 50 KSI
ITEM QTY PART NO. NOMENCLATURE OR DESCRIPTION			
PARTS LIST			
UNLESS OTHERWISE SPECIFIED DIMENSIONS ARE IN INCHES TOLERANCES ARE: DECIMALS .XX±.06 .XXX±.030 STRAIGHT EDGE .008 MATERIAL FINISH DO NOT SCALE DRAWING		PART NO.	
		APPROVALS	DATE
		DRAWN	08/07/19
		CHECKED	
		ENG. APPD.	
TITLE			
RTS02 20' SECTION ASSEMBLY			
SIZE	CAGE CODE	DRAWING NO.	REV.
D		S-11	
SCALE NONE		SHEET 12 OF	

NOTES:

- DIMENSIONS OF THE BEVEL IN DETAILS B-B ARE FROM THE CENTER OF THE FLANGE TO THE EDGE OF THE FLANGE.
- ALL WELDING SHALL BE DONE IN ACCORDANCE WITH AMERICAN WELDING SOCIETY'S STRUCTURAL WELDING CODE, D1.1, THE LASTEST REVISION.
- THE PART NUMBER SHALL BE PERMANENTLY ATTACHED (STAMPED, WELDED LETTERING, STAMPED ON A PLATE THAT IS WELDED TO THE MEMBER, ECT.) TO THE MEMBER BEFORE ALL PROTECTIVE COATINGS (GALVANIZING, PAINT, ECT.) ARE APPLIED. THE PART NUMBER SHALL HAVE A MINIMUM CHARACTER HEIGHT OF 1/2 INCH, BE LEGIBLE, AND CLEARLY VISIBLE TO AN INSPECTOR AFTER ERECTION.
- THE LEG SHALL BE GALVANIZED IN ACCORDANCE WITH ASTM A123.
- THE SIZE OF THE WELD SPECIFIED ARE THE MINIMUM SIZE WELD ALLOWED.
- THE PART NUMBER SHALL BE LOCATED NEAR THE BASE OF THE TOWER LEG.



BILL OF MATERIAL				
ITEM	QTY	UNIT	PART NO.	
1	1	EA.	-	HSS, Ø 3.50 X .300 WALL ASTM A500 GR B X 240 1/4"
2	1	EA.	-	TOP FLANGE, 1 X 7 SQ.
3	1	EA.	-	BOTTOM FLANGE, 1 X 7 SQ.
4	2	EA.	-	BOTTOM EAR, 1/4 X 3 X 5
5	2	EA.	-	TOP EAR, 1/4 X 3 X 4 1/2
6	6	EA.	-	MID EAR, 1/4 X 3 X 7 1/4



08/20/19 REVISED PER SOLIDWORKS MODEL

UNLESS OTHERWISE SPECIFIED DIMENSIONS ARE IN INCHES TOLERANCES ARE:		PART NO.	
DECIMALS .XX±.06 .XXX±.030	ANGLES ± 1/2	APPROVALS	DATE
STRAIGHT EDGE .008		DRAWN	08/20/19
MATERIAL ASTM A36 STEEL		CHECKED	
FINISH ASTM A123 GALV		ENG. APPD.	
DO NOT SCALE DRAWING			

TITLE RTT02 LEG WELDMENT			
SIZE D	CAGE CODE	DRAWING NO. S-12	REV.
SCALE NONE			SHEET 13 OF

NOTES:

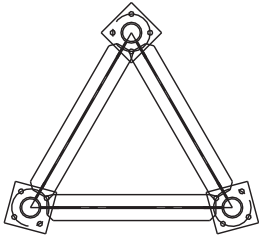
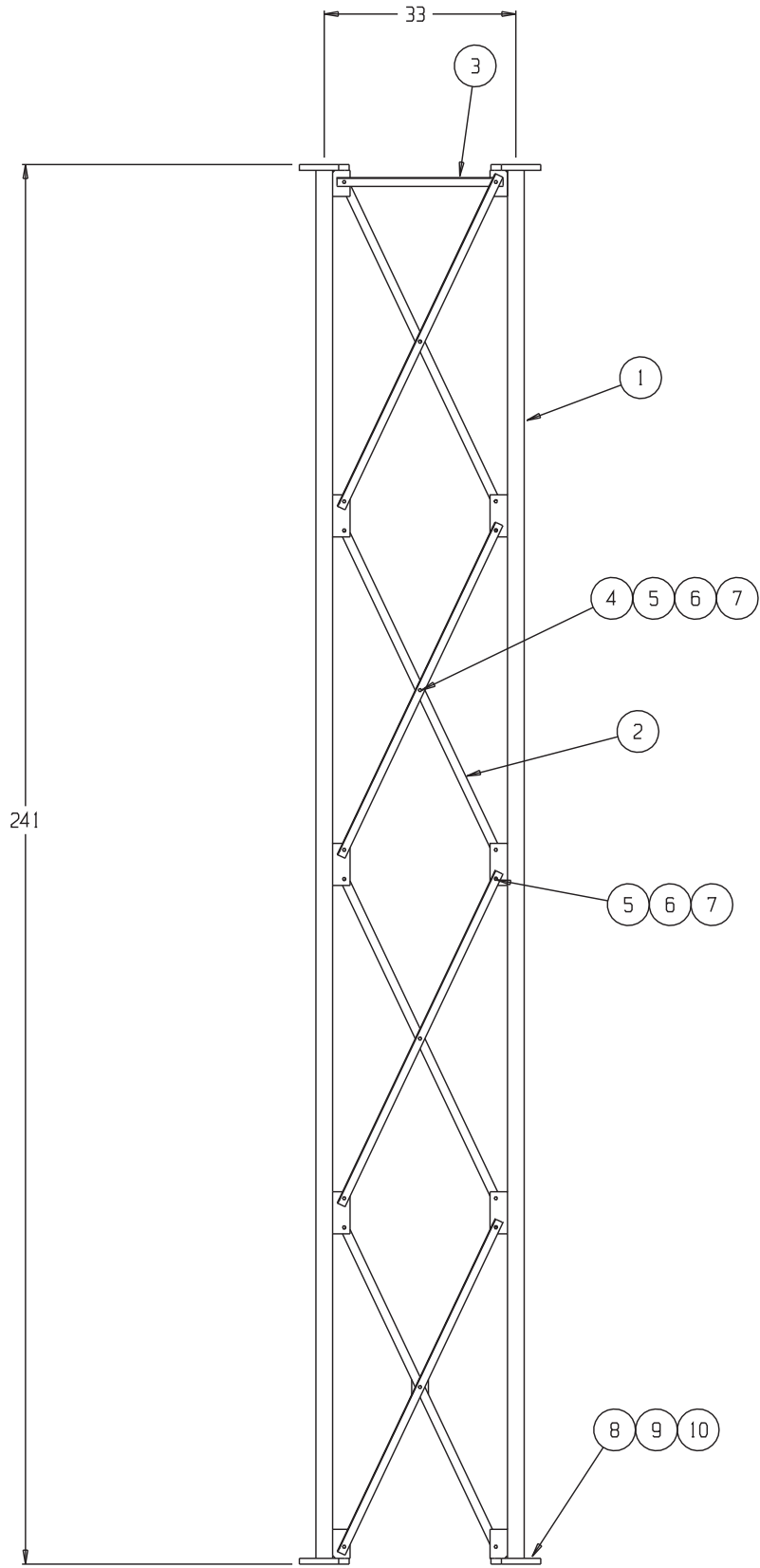
1. ALL ASTM A325 BOLTS ARE TO BE TIGHTENED TO A SNUG TIGHT CONDITION.

A SNUG TIGHT CONDITION IS DEFINED AS THE TIGHTNESS THAT EXISTS WHEN ALL PLIES IN A JOINT ARE IN FIRM CONTACT. THIS MAY BE ATTAINED BY A FEW IMPACTS OF AN IMPACT WRENCH OR THE FULL EFFORT OF A MAN USING AN ORDINARY SPUD WRENCH.

REF.: "SPECIFICATION FOR ASTM A325 OR A490 BOLTS" MANUAL OF STEEL CONSTRUCTION. ALLOWABLE STRESS DESIGN. AISC. 14TH EDITION, 2011. PAGE 16.2xi.

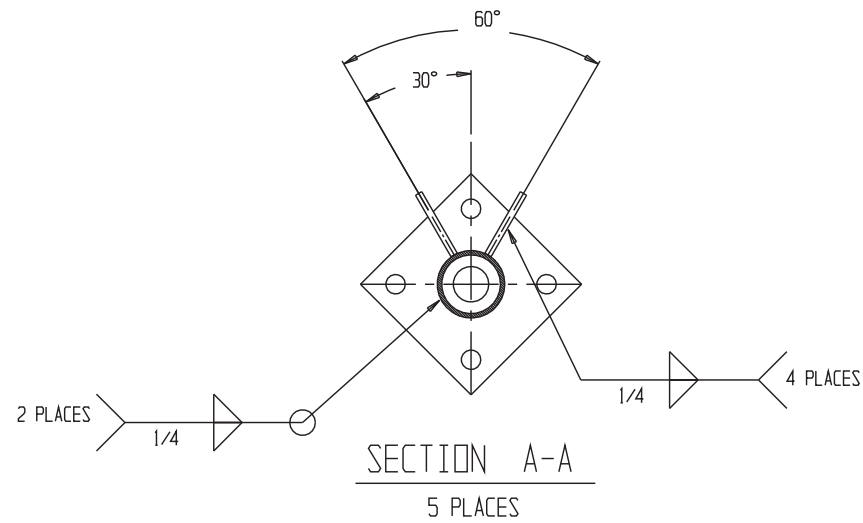
2. TOWER LEG TO BE ORIENTED SUCH THAT PART NUMBER IS AT THE BASE OF SECTION.

3. BASE SECTIONS DO NOT INCLUDE FLANGE BOLTS.

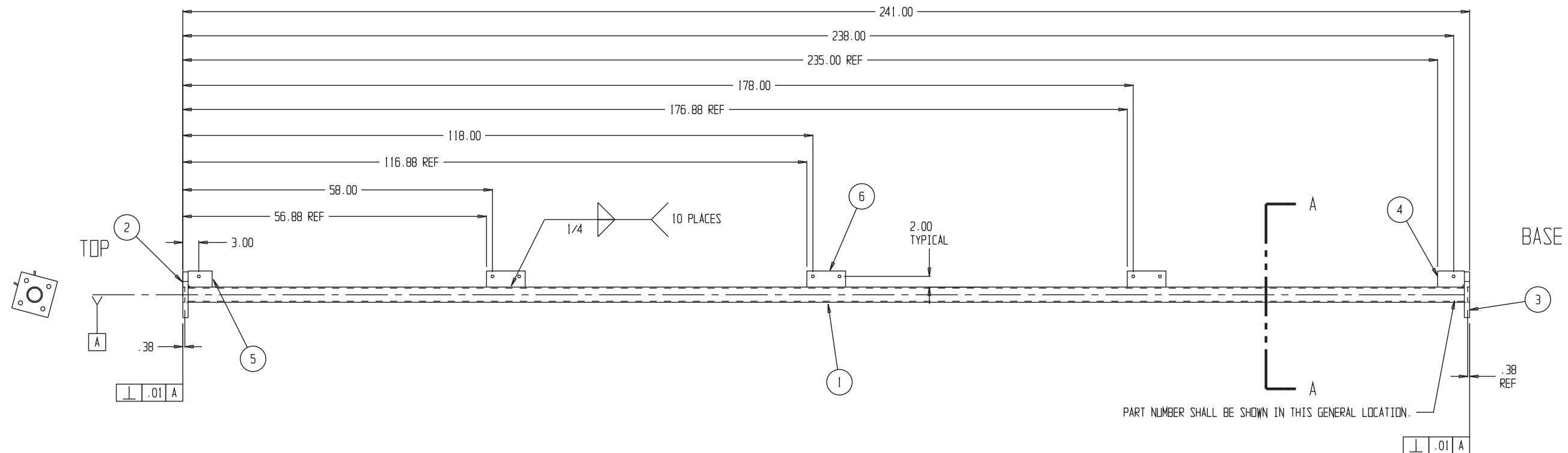


10	12	.	LOCKWASHER, 3/4 GALV
9	12	.	NUT, 3/4-10 UNC HEAVY HEX GALV
8	12	.	BOLT, 3/4-10 UNC HEX HD ASSTM A325 GALV X 3 1/2
7	60	.	LOCKWASHER, 1/2 GALV
6	60	.	NUT, 1/2-13 UNC HEAVY HEX GALV
5	60	.	BOLT, 1/2-13 UNC HEX HD ASTM A325 GALV X 1 1/2
4	12	.	SPACER, 1/4 X 1 1/2 W/ 9/16 HOLE
3	3	.	HORIZONTAL, 1 1/2 X 1 1/2 X 1/8 ANGLE X 28 5/8"
2	24	.	DIAGONAL, 1 1/2 X 1 1/2 X 1/8 ANGLE X 63 3/8"
1	3	.	LEG, HSS Ø 2.875" X .203 WALL ASTM A500 GR B 50 KSI
ITEM	QTY REQD	PART NO. IDENTIFYING NO.	NOMENCLATURE OR DESCRIPTION
PARTS LIST			
UNLESS OTHERWISE SPECIFIED DIMENSIONS ARE IN INCHES TOLERANCES ARE: DECIMALS .XX±.06 .XXX±.030 STRAIGHT EDGE .008 MATERIAL	PART NO.		TITLE RTS02A 20' SECTION ASSEMBLY
	APPROVALS	DATE	
	DRAWN	08/07/19	
	CHECKED		
FINISH	ENG. APPD.		SIZE D
			CAGE CODE
			DRAWING NO. S-13
			REV.
DO NOT SCALE DRAWING			SCALE NONE
			SHEET 14 OF

1. DIMENSIONS OF THE BEVEL IN DETAILS B-B ARE FROM THE CENTER OF THE FLANGE TO THE EDGE OF THE FLANGE.
2. ALL WELDING SHALL BE DONE IN ACCORDANCE WITH AMERICAN WELDING SOCIETY'S STRUCTURAL WELDING CODE, D1.1, THE LATEST REVISION.
3. THE PART NUMBER SHALL BE PERMANENTLY ATTACHED (STAMPED, WELDED LETTERING, STAMPED ON A PLATE THAT IS WELDED TO THE MEMBER, ECT.) TO THE MEMBER BEFORE ALL PROTECTIVE COATINGS (GALVANIZING, PAINT, ECT.) ARE APPLIED. THE PART NUMBER SHALL HAVE A MINIMUM CHARACTER HEIGHT OF 1/2 INCH, BE LEGIBLE, AND CLEARLY VISIBLE TO AN INSPECTOR AFTER ERECTION.
4. THE LEG SHALL BE GALVANIZED IN ACCORDANCE WITH ASTM A123.
5. THE SIZE OF THE WELD SPECIFIED ARE THE MINIMUM SIZE WELD ALLOWED.
6. THE PART NUMBER SHALL BE LOCATED NEAR THE BASE OF THE TOWER LEG.



				BILL OF MATERIAL
ITEM	QTY	UNIT	PART NO.	
1	1	EA.	-	HSS, ϕ 2.875 X .203 WALL ASTM A500 GR B X 240 1/4"
2	1	EA.	-	TOP FLANGE, 1 X 7 SQ.
3	1	EA.	-	BOTTOM FLANGE, 1 X 7 SQ.
4	2	EA.	-	BOTTOM EAR, 1/4 X 3 X 5
5	2	EA.	-	TOP EAR, 1/4 X 3 X 4 1/2
6	6	EA.	-	MID EAR, 1/4 X 3 X 7 1/4



08/20/19 REVISED PER SOLIDWORKS MODEL

UNLESS OTHERWISE SPECIFIED DIMENSIONS ARE IN INCHES TOLERANCES ARE:		PART NO.			
DECIMALS XX±.08	ANGLES ± 1/2	APPROVALS		DATE	
STRAIGHT EDGE .008					
MATERIAL		DRAWN		TITLE	
ASTM A36 STEEL		08/20/19		RTT02A LEG WELDMENT	
CHECKED					
FINISH		ENG. APPD.		SIZE	
ASTM A123 GALV				CAGE CODE	
DO NOT SCALE DRAWING				DRAWING NO.	
				REV.	
				S-14	
				SCALE NONE	
				SHEET 15OF	

NOTES:

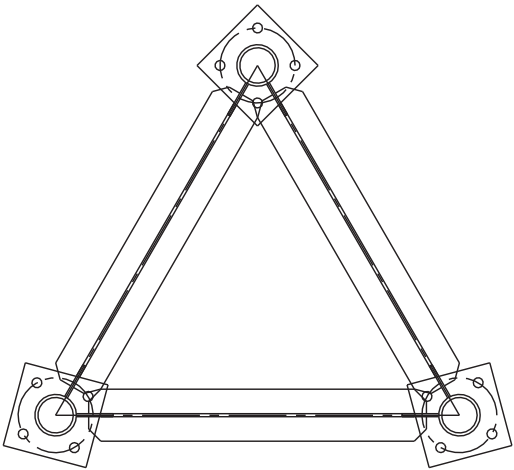
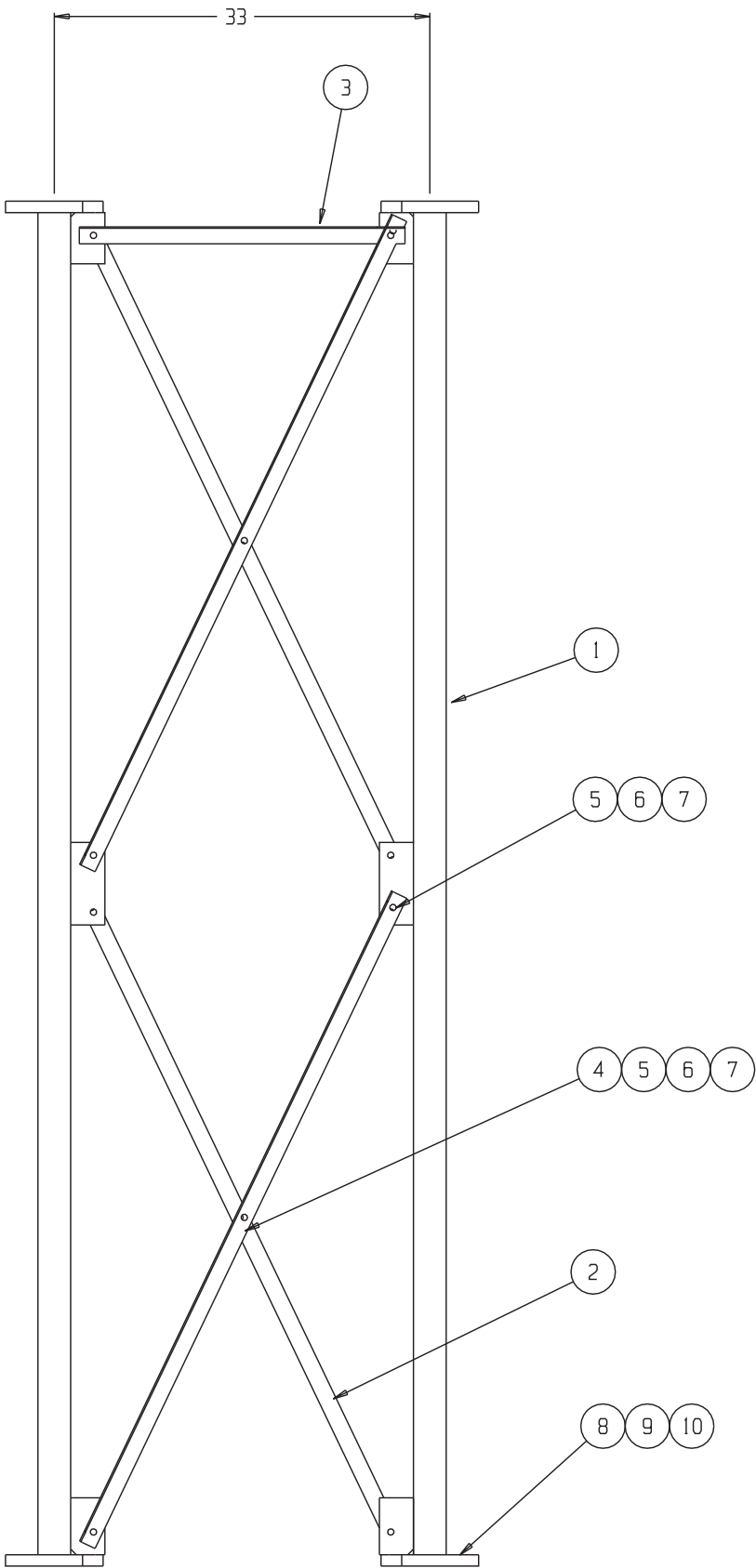
1. ALL ASTM A325 BOLTS ARE TO BE TIGHTENED TO A SNUG TIGHT CONDITION.

A SNUG TIGHT CONDITION IS DEFINED AS THE TIGHTNESS THAT EXISTS WHEN ALL PLIES IN A JOINT ARE IN FIRM CONTACT. THIS MAY BE ATTAINED BY A FEW IMPACTS OF AN IMPACT WRENCH OR THE FULL EFFORT OF A MAN USING AN ORDINARY SPUD WRENCH.

REF.: "SPECIFICATION FOR ASTM A325 OR A490 BOLTS" MANUAL OF STEEL CONSTRUCTION. ALLOWABLE STRESS DESIGN. AISC. 14TH EDITION, 2011. PAGE 16.2xi.

2. TOWER LEG TO BE ORIENTED SUCH THAT PART NUMBER IS AT THE BASE OF SECTION.

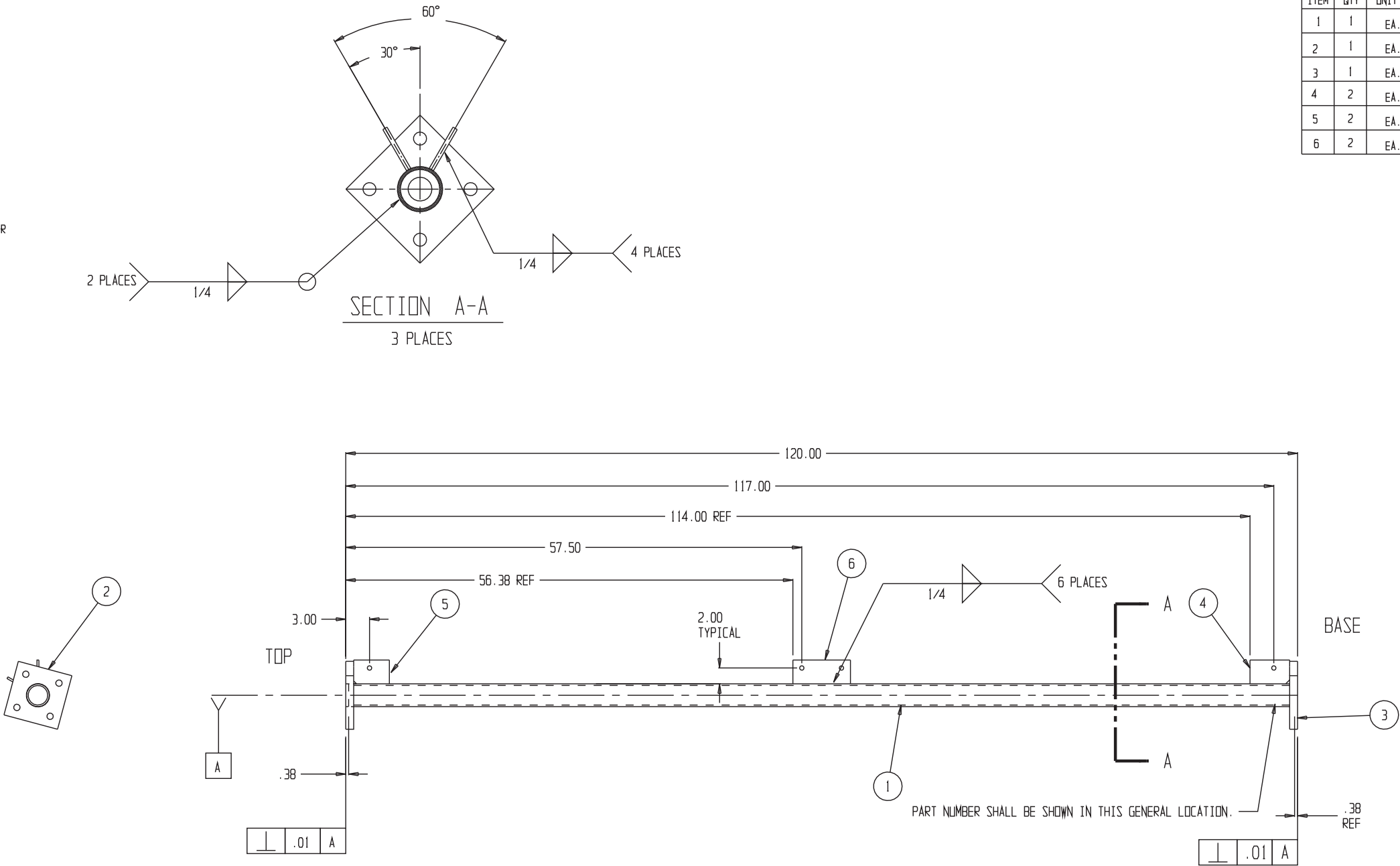
3. BASE SECTIONS DO NOT INCLUDE FLANGE BOLTS.



10	12	.	LOCKWASHER, 3/4 GALV
9	12	.	NUT, 3/4-10 UNC HEAVY HEX GALV
8	12	.	BOLT, 3/4-10 UNC HEX HD ASSTM A325 GALV X 3 1/2
7	30	.	LOCKWASHER, 1/2 GALV
6	30	.	NUT, 1/2-13 UNC HEAVY HEX GALV
5	30	.	BOLT, 1/2-13 UNC HEX HD ASTM A325 GALV X 1 1/2
4	6	.	SPACER, 1/4 X 1 1/2 W/ 9/16 HOLE
3	3	.	HORIZONTAL, 1 1/2 X 1 1/2 X 1/8 ANGLE X 28 5/8"
2	12	.	DIAGONAL, 1 1/2 X 1 1/2 X 1/8 ANGLE X 63 3/8"
1	3	.	LEG, HSS Ø 2.875" X .203 WALL ASTM A500 GR B 50 KSI
ITEM	QTY REQD	PART NO. IDENTIFYING NO.	NOMENCLATURE OR DESCRIPTION
PARTS LIST			
UNLESS OTHERWISE SPECIFIED DIMENSIONS ARE IN INCHES TOLERANCES ARE: <div>DECIMALS .XX±.06 .XXX±.030 STRAIGHT EDGE .008</div> <div>MATERIAL</div> <div>FINISH</div> <div>DO NOT SCALE DRAWING</div>		PART NO.	
		APPROVALS	DATE
		DRAWN	08/07/19
		CHECKED	
		ENG. APPD.	
TITLE			
RTS02B 10' SECTION ASSEMBLY			
SIZE	CAGE CODE	DRAWING NO.	REV.
D		S-15	
SCALE NONE		SHEET 16 OF	

NOTES:

- DIMENSIONS OF THE BEVEL IN DETAILS B-B ARE FROM THE CENTER OF THE FLANGE TO THE EDGE OF THE FLANGE.
- ALL WELDING SHALL BE DONE IN ACCORDANCE WITH AMERICAN WELDING SOCIETY'S STRUCTURAL WELDING CODE, D1.1, THE LATEST REVISION.
- THE PART NUMBER SHALL BE PERMANENTLY ATTACHED (STAMPED, WELDED LETTERING, STAMPED ON A PLATE THAT IS WELDED TO THE MEMBER, ECT.) TO THE MEMBER BEFORE ALL PROTECTIVE COATINGS (GALVANIZING, PAINT, ECT.) ARE APPLIED. THE PART NUMBER SHALL HAVE A MINIMUM CHARACTER HEIGHT OF 1/2 INCH, BE LEGIBLE, AND CLEARLY VISIBLE TO AN INSPECTOR AFTER ERECTION.
- THE LEG SHALL BE GALVANIZED IN ACCORDANCE WITH ASTM A123.
- THE SIZE OF THE WELD SPECIFIED ARE THE MINIMUM SIZE WELD ALLOWED.
- THE PART NUMBER SHALL BE LOCATED NEAR THE BASE OF THE TOWER LEG.

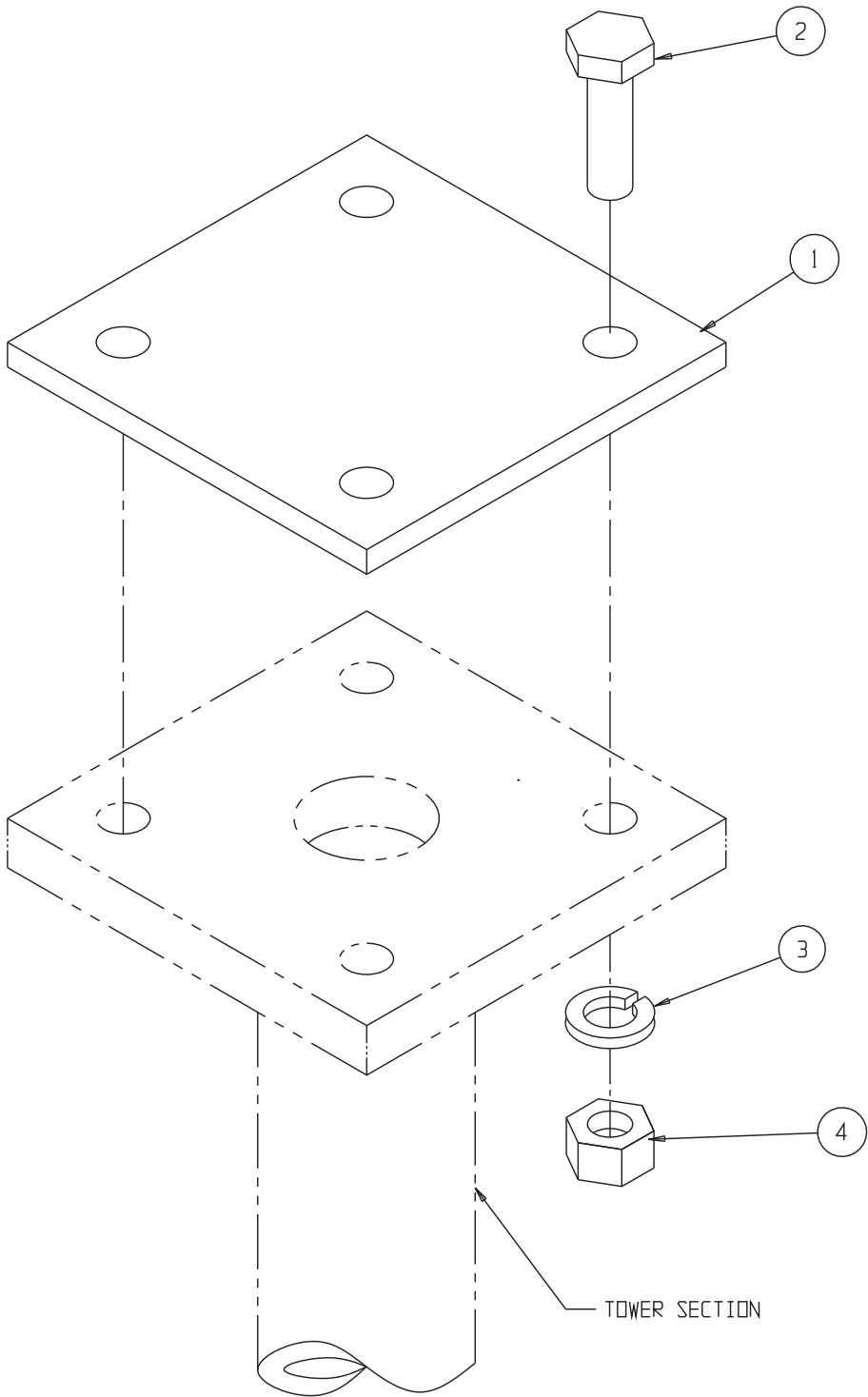


BILL OF MATERIAL				
ITEM	QTY	UNIT	PART NO.	
1	1	EA.	-	HSS, Ø 2.875 X .203 WALL ASTM A500 GR B X 119 1/4"
2	1	EA.	-	TOP FLANGE, 1 X 7 SQ.
3	1	EA.	-	BOTTOM FLANGE, 1 X 7 SQ.
4	2	EA.	-	BOTTOM EAR, 1/4 X 3 X 5
5	2	EA.	-	TOP EAR, 1/4 X 3 X 4 1/2
6	2	EA.	-	MID EAR, 1/4 X 3 X 7 1/4

08/20/19 REVISED PER SOLIDWORKS MODEL

UNLESS OTHERWISE SPECIFIED DIMENSIONS ARE IN INCHES TOLERANCES ARE:		PART NO.	
DECIMALS .XX±.06 .XXX±.030	ANGLES ± 1/2	APPROVALS	DATE
STRAIGHT EDGE .008		DRAWN	08/20/19
MATERIAL ASTM A36 STEEL		CHECKED	
FINISH ASTM A123 GALV		ENG. APPD.	
DO NOT SCALE DRAWING			

TITLE RTT02B LEG WELDMENT			
SIZE D	CAGE CODE	DRAWING NO. S-16	REV.
SCALE NONE			SHEET 17 OF



4	4	-	NUT, 3/4-10 UNC HEAVY HEX GALV					
3	4	-	LOCKWASHER, 3/4 GALV					
2	4	-	BOLT 3/4-10 UNC HEX HD ASTM A-325 GALV X 2 1/2					
1	1	-	TOP CAP, 3/16 X 7 SQ					
ITEM		QTY REQD	PART NO. IDENTIFYING NO.		NOMENCLATURE OR DESCRIPTION	DWG NO.		
PARTS LIST								
UNLESS OTHERWISE SPECIFIED DIMENSIONS ARE IN INCHES TOLERANCES ARE: DECIMALS .XX±.06 ANGLES ± 1/2 STRAIGHT EDGE .008		PART NO.						
		APPROVALS	DATE					
		ASTM A36 STEEL		DRAWN	08/09/19	TITLE 150' SELF-SUPPORT TOWER TOP CAP ASSEMBLY		
				CHECKED				
FINISH ASTM A123 GALV		ENG. APPD.		SIZE D	CAGE CODE	DRAWING NO. S-17	REV.	
DO NOT SCALE DRAWING				SCALE NONE		SHEET 18 OF		