



CAT 5E Port Patch Panels from Primus Cable meet and exceed industry standards, ensuring safety and maximizing the performance of your network (TIA/EIA 568A & 568B, ETL & UL). The panel itself is made of solid 16 gauge steel with rounded edges.

The jack adapter contacts are made of gold plated brass while the termination contacts are steel plated nickel for optimal performance. The jacks also sit flush on the panel face, eliminating cable snags. These are not only ideal for speed and efficiency, but also for organization performance. Primus Cable Patch Panels feature unique cable management clips that make wiring and 110 punchdown termination easier.

Features

- Made with 16 gauge steel
- 19" rack mountable
- Cable routing clamps (included)
- Installation instructions (included)
- Flush mounted jacks
- Color coded 110/Krone termination blocks
- UL listed
- Available in 12, 24, 48 and 96 ports.

Material

1. Panel: SPCC, 1.6mm Thick
2. RJ45 Housing: PBT, UL 94V-0
3. RJ45 Contact Material & Finish:
 - Phosphor Bronze w/ 50-60 Micro-Inch Nickel Plated
 - Contact Area: Min. 3mm 50 Micro-Inch Gold Plated
4. IDC Housing: PC, UL 94V-2
5. IDC Terminal Material & Finish:
 - Phosphor Bronze w/ 50 Micro-Inch Tin-Lead Plated over 50-60 Micro-Inch Nickel Plated.
 - 110 & Krone Tool Compatible
 - Use for 22-26 AWG Stranded & Solid Wire
6. Jacket Bracket Set: ABS UL 94V-0, Black Color
7. Cable Holder: Nylon 66, UL 94V-0

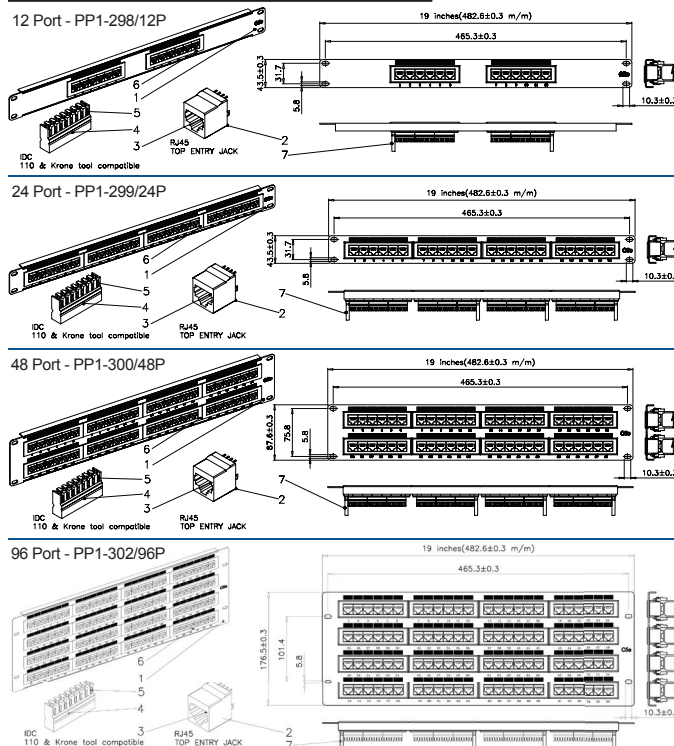
CAT 5E Patch Panel

12, 24, 48 & 96 Port, 19" Width

CAT5E Patch Panels



Patch Panel Item Numbers & Dimensions:



Optional CAT 5E Bulk Cables

- C5UP-5041BL - CAT 5E UTP Plenum Cable for Networking, CMP UL Listed 1000' Blue

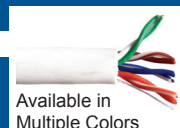
Primus Cable's plenum cables are ideal cables for plenum spaces in offices or commercial buildings. This 350MHz CAT 5E is CMP plenum rated and UL Listed with 24 AWG solid bare copper and FEP Insulation. This CAT 5E Cable is supplied in a 1000ft pull box with a large payout which helps eliminate snags or kinks when installing the cable, saving you time and money. To complete your installation call us about our tools.

- C5U-4743RB - CAT 5E UTP Ethernet Cable, CMR UL Listed 1000' Blue

Primus Cable's CMR CAT 5E Ethernet Cables are ideal for any home or office. This 350MHz CAT 5E cable is CMR riser rated and UL listed with 24 AWG solid bare copper conductors. This CAT 5E Cable is supplied in a 1000ft pull box with large payout which helps eliminate snags or kinks when installing the cable, saving you time and money. To complete your installation call us about our tools.

- C5U-379WH - CAT 5E UTP Ethernet Cable, CM ETL Verified 1000' White

Primus Cable's economic CM CAT 5E Ethernet Cables are ideal for any home or office. This 350MHz CAT 5E cable is CM rated and ETL Verified with 24 AWG solid bare copper conductors. This CAT 5E Cable is supplied in a 1000ft pull box with large payout which helps eliminate snags or kinks when installing the cable, saving you time and money. To complete your installation call us about our tools.



PrimusCable.com - (951) 824-1571



CAT 5E Patch Panel 12, 24, 48 & 96 Port, 19" Width

Performance

- The IDC Color Codes Includes Both The T568A & B.
- Insertion Force: 900 gms for 8 Contacts
- Retention Strength: 7.7 kgs Between Jack and Plug
- Operation Temperature: -40°C to 80°C
- Durability:
 - Jack: 750 Cycles Plug-Jack Mating and Unmating Test, Insertion Cycles.
 - IDC: Max. 200 Punching Times.
- The CAT 5E Performance is in Compliance with the ANSI/TIA/EIA 568 B.2 Standard.

Physical Characteristics

- 12 Port Dimensions:
 - Length: 19 Inches
 - Height: 1U
- 24 Port Dimensions:
 - Length: 19 Inches
 - Height: 1U
- 48 Port Dimensions:
 - Length: 19 Inches
 - Height: 2U
- 96 Port Dimensions:
 - Length: 19 Inches
 - Height: 4U

Optional Products

D-Ring Cable Management Panels

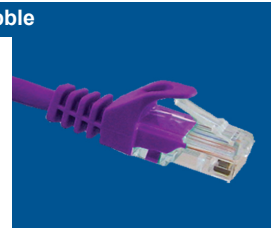
- 1U 5-Ring: PP4-314/5R/1U
- 2U 5-Ring: PP4-2102/5R/2U
- 1U 5-Ring: RP-K12-3613-1U
- 2U 5-Ring: RP-K12-3614-2U
- 1U 5-Ring + 14 Clips: RP-K12-3357-DMK



Optional Products

CAT 5E Patch Cords, Molded with Bubble

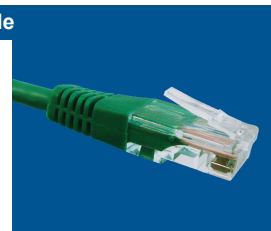
- 1 Foot: PC5P-511-1BL
- 2 Foot: PC5P-520-2BL
- 3 Foot: PC5P-539-3BL
- 5 Foot: PC5P-548-5BL
- 7 Foot: PC5P-557-7BL
- 10 Foot: PC5P-566-10BL
- 15 Foot: PC5P-2131-15BL
- 25 Foot: PC5P-593-25BL
- 50 Foot: PC5P-602-50BL
- 75 Foot: PC5P-611-75BL
- 100 Foot: PC5P-620-100BL
- 150 Foot: PC5P-2760-150BL



Available in
Multiple Colors

CAT 5E Patch Cords Molded No Bubble

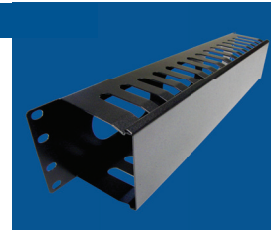
- 1 Foot: PC5N-629-1BL
- 2 Foot: PC5N-638-2BL
- 3 Foot: PC5N-647-3BL
- 5 Foot: PC5N-656-5BL
- 7 Foot: PC5N-665-7BL
- 10 Foot: PC5N-674-10BL
- 15 Foot: PC5N-2909-15BL
- 25 Foot: PC5N-701-25BL
- 50 Foot: PC5N-710-50BL
- 100 Foot: PC5N-728-100BL



Available in
Multiple Colors

Slotted Cable Management Panels

- 1U: PP4-2444-1UDCM
- 2U: PP4-2445-2UDCM
- 1U: PP4-4522-1UDCM
- 2U: PP4-3483-2UDCM
- 1U: PP4-3407-1UDCM
- 2U: PP4-3408-2UDCM
- 2U: PP4-4461-2UDCM



©2015 CRN Solutions Inc. dba. Primus Cable
All Rights Reserved.

Although Primus Cable makes every reasonable effort to ensure their accuracy at the time of this publication, information and specifications described herein are subject to error or omission and to change without notice, and the listing of such information and specifications does not ensure product availability.

Primus Cable provides the information and specifications herein on an "AS IS" basis, with no representations or warranties, whether express, statutory or implied. In no event will Primus Cable be liable for any damages (including consequential, indirect, incidental, special, punitive, or exemplary damages) whatsoever, even if Primus Cable has been advised of the possibility of such damages, whether in an action under contract, negligence or any other theory, arising out of or in connection with the use, or inability to use, the information or specifications described herein.

All sales of Primus Cable products are subject to Primus Cable's standard terms and conditions of sale.

Primus Cable believes this product to be in compliance with EU RoHS (Directive 2002/EC, 27 Jan. 2003). Material manufactured prior to the compliance date may be in stock at Primus Cable facilities and in our Distributor's inventory. The information provided in this Product Disclosure, and the identification of materials listed as reportable or restricted within the Product Disclosure, is correct to the best of Primus Cable's knowledge, information, and belief at the date any other operation of the product itself or the one that it becomes a part of. This Product Disclosure is not to be considered a warranty or quality specification and regulations based on their individual usage of the product.

Primus Cable declares this product to be in compliance with EU LVD (Low Voltage Directive 73/23/EEC), as amended by directive 93/68/EEC

PrimusCable.com - (951) 824-1571