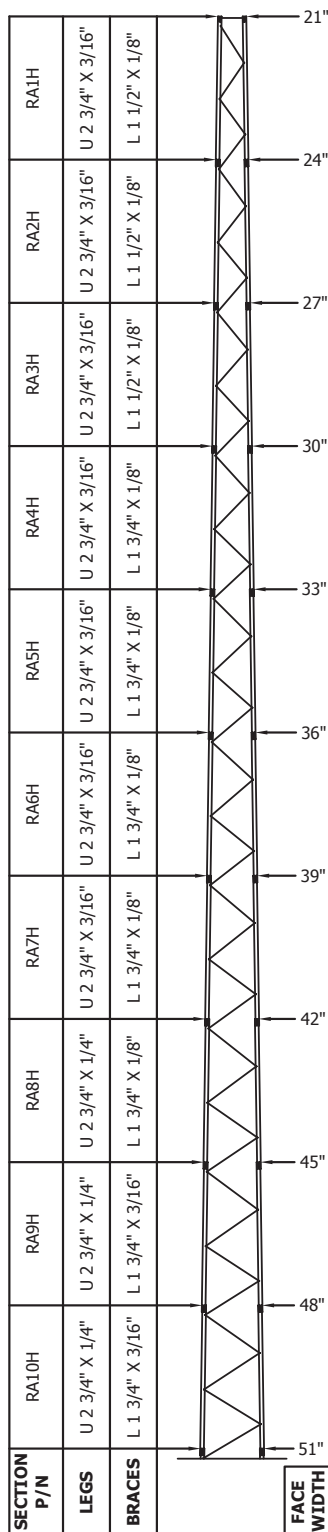


RSL TOWER DESIGN LOADING ACCORDING TO ANSI/TIA-222-G									
STRUCTURE CLASSIFICATION = II EXPOSURE CATEGORY = C TOPOGRAPHIC CATEGORY = 1 3-SECOND GUST WIND SPEED WITH ICE = 40 MPH DESIGN ICE THICKNESS = 1.0" EARTHQUAKE SPECTRAL RESPONSE ACCELERATION, S _s = 2.50									
HEIGHT (FT)	SECTIONS	HIGH PERFORMANCE DISH LOCATED 10 FT BELOW TOWER TOP	TOWER KIT P/N	ALLOWABLE EFFECTIVE PROJECTED AREA (FT ²)					
				3-SECOND GUST WIND SPEED WITHOUT ICE (MPH)					
				90	100	110	120	130	140
90	R1H - R9H	HP2	RSL90H19	5	-	-	-	-	-
	R2H - R10H	HP2	RSL90H20	7	-	-	-	-	-
80	R1H - R8H	HP2	RSL80H18	7	-	-	-	-	-
	R2H - R9H	HP2	RSL80H29	17	6	-	-	-	-
	R3H - R10H	HP4	RSL80H30	10	-	-	-	-	-
70	R1H - R7H	HP2	RSL70H17	10	-	-	-	-	-
	R2H - R8H	HP2	RSL70H28	20	10	-	-	-	-
	R3H - R9H	HP2	RSL70H39	31	19	9	-	-	-
	R4H - R10H	HP4	RSL70H40	27	12	-	-	-	-
60	R1H - R6H	HP2	RSL60H16	25	13	5	-	-	-
	R4H - R9H	HP4	RSL60H49	43	27	15	6	-	-
	R5H - R10H	HP4	RSL60H50	48	30	18	8	-	-
50	R1H - R5H	HP4	RSL50H15	31	18	8	-	-	-
	R5H - R9H	HP4	RSL50H59	72	50	35	23	14	7
	R6H - R10H	HP4	RSL50H60	78	55	39	26	11	-
40	R1H - R4H	HP4	RSL40H14	51	36	25	16	8	-
	R7H - R10H	HP4	RSL40H70	80	80	59	39	23	11
30	R1H - R3H	HP4	RSL30H13	80	63	48	37	28	20
	R8H - R10H	HP4	RSL30H80	80	80	74	53	37	24
20	R1H - R2H	HP4	RSL20H12	80	80	80	75	61	48
	R9H - R10H	HP4	RSL20H90	80	80	80	69	52	39

The tabulated allowable effective projected areas (EPA) are limited to a maximum recommended value of 80 (ft²). EPA values shown in the table are in addition to the specified high performance dish. EPA values shown as " - " indicate tower kit is not applicable for the corresponding wind speed.

**HEAVY TUBE BRACING
DISH LOADING**



RSL TOWER DESIGN LOADING ACCORDING TO ANSI/TIA-222-G									
STRUCTURE CLASSIFICATION = II EXPOSURE CATEGORY = C TOPOGRAPHIC CATEGORY = 1 3-SECOND GUST WIND SPEED WITH ICE = 40 MPH DESIGN ICE THICKNESS = 1.0" EARTHQUAKE SPECTRAL RESPONSE ACCELERATION, S _s = 2.50									
HEIGHT (FT)	SECTIONS	HIGH PERFORMANCE DISH LOCATED 10 FT BELOW TOWER TOP	TOWER KIT P/N	ALLOWABLE EFFECTIVE PROJECTED AREA (FT ²)					
				3-SECOND GUST WIND SPEED WITHOUT ICE (MPH)					
				90	100	110	120	130	140
90	RA2H - RA10H	HP2*	RSL90AH20	0	-	-	-	-	-
	RA1H - RA8H	HP2*	RSL80AH18	0	-	-	-	-	-
80	RA2H - RA9H	HP2	RSL80AH29	12	-	-	-	-	-
	RA3H - RA10H	HP4	RSL80AH30	6	-	-	-	-	-
	RA1H - RA7H	HP2	RSL70AH17	6	-	-	-	-	-
70	RA2H - RA8H	HP2	RSL70AH28	17	5	-	-	-	-
	RA3H - RA9H	HP2	RSL70AH39	28	14	4	-	-	-
	RA4H - RA10H	HP4	RSL70AH40	21	8	-	-	-	-
	RA1H - RA6H	HP2	RSL60AH16	20	10	-	-	-	-
60	RA4H - RA9H	HP4	RSL60AH49	39	22	10	-	-	-
	RA5H - RA10H	HP4	RSL60AH50	43	26	13	-	-	-
	RA1H - RA5H	HP4	RSL50AH15	29	15	4	-	-	-
50	RA5H - RA9H	HP4	RSL50AH59	68	46	31	20	10	-
	RA6H - RA10H	HP4	RSL50AH60	74	50	34	22	12	5
	RA1H - RA4H	HP4	RSL40AH14	50	34	22	13	6	-
40	RA7H - RA10H	HP4	RSL40AH70	80	80	67	50	37	27
	RA1H - RA3H	HP4	RSL30AH13	80	62	47	35	27	20
30	RA8H - RA10H	HP4	RSL30AH80	80	80	80	80	68	49
	RA1H - RA2H	HP4	RSL20AH12	80	80	80	74	60	47
20	RA9H - RA10H	HP4	RSL20AH90	80	80	80	80	80	67

The tabulated allowable effective projected areas (EPA) are limited to a maximum recommended value of 80 (ft²). EPA values shown in the table are in addition to the specified high performance dish. EPA values shown as "-" indicate tower kit is not applicable for the corresponding wind speed.

**HEAVY ANGLE BRACING
DISH LOADING**

