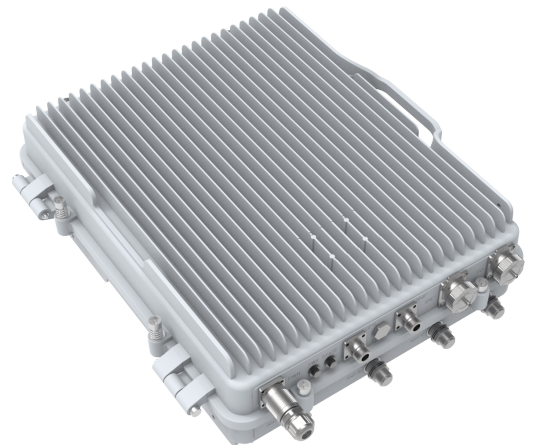


## Intercell 10 B38+B39

Product code: P02003-B38B39-10W

The Intercell 10 B38+B39 is an outdoor TDD-LTE dual carriers base station with 2\*(2\*10W) output power (each carrier supports 2x2 MIMO with 10W output each RF channel ). The unit is compact, light weight, and easy to deploy. The Intercell 10 B38+B39 offers excellent performance, helping operators provide better coverage and higher capacity with minimal effort.



### Features

- Standard TDD bands 38 and 39
- Peak data rate of each carrier (20 MHz)
  - DL 140Mbps (256QAM,SF2)
  - UL 30Mbps (64QAM,SF1)
- Peak data rate of carrier aggregation (20 MHz)
  - DL 280Mbps (256QAM,SF2)
  - UL 60Mbps (64QAM,SF1)
- Maximum 2 \* 192 RRC connected users and 2 \* 96 active users
- 5/10/15/20 MHz operation bandwidth
- All IP based backhaul, many IP backhaul methods can be used, including RJ45 Ethernet, SFP
- Plug-and-play with SON features, including self-configuration/self-optimization/self-healing
- High transmission power to extend NLOS coverage, low power consumption to save OPEX.

### Environment

Operating Temperature	-40°C to +55°C
Storage Temperature	-40°C to +75°C
Operating Humidity	0% to 95%
IP Rating	IP66
Power Interface Protection	GB/T 17626.5, IEC61000-4-5

## Hardware Specification

LTE Mode	TDD
Frequency Bands	B38: 2570 MHz - 2620 MHz / B39: 1880 MHz - 1920 MHz
Channel Bandwidth	5/10/15/20 MHz
DPD Support	Support
Frequency Exactitude	±0.05 ppm (OCXO)
Synchronization	GPS, 1588v2, Network Listening
Backhaul	1 RJ45 Ethernet (10/100/1000 Auto-negotiating) and 1 optical SFP
Number of RF Ports	6 RF(4*ANT SNF GPS/BD)
Connector Characteristic Impedance	50Ω
In- Band Input Return Loss	≥ 15dB
Max Output Power	40 ± 1dBm / antenna
Target Rx sensitivity	≤ -104dBm (25RBs, QPSK 1/3 as defined in 3GPP TS 36.141)
Adjacent Channel Leakage Ratio (ACLR)	< - 45dBc
Max Tx EVM(6 4 QAM)	< 4.5%
Volume	< 22.2L
Weight	< 25 kg
Installation	Pole, Wall mounted
Power Supply Type (AC or DC)	- 48V DC
Power Consumption	< 200 W

## Software Specification

LTE Standard	3GPP Release 12
Peak Data Rate (2 0 MHz BW) each carrier	DL 140Mbps (256QAM,SF2) / UL 30Mbps (64QAM,SF1)
Peak Data Rate (2 0 MHz BW) Carrier Aggregation	DL 280Mbps (256QAM,SF2) / UL 60Mbps (64QAM,SF1)
Modulation	DL:QPSK,16QAM,64QAM,256QAM / UL: QPSK,16QAM,64QAM
Max User Number	2 * 192 RRC connected users / 2 * 96 active users
Voice Solution	VoLTE, eSRVCC, CSFB
SON Features	Self-configuration: Frequency/PCI/PRACH selection,ANR, TPM Self-optimization: MRO, MLB,TPM Self-healing
Network Management Interface	TR069
Traffic Offload	Local IP access (LIPA)
RAN Sharing	Supported
QoS	3GPP standard QCI
S1 Congestion Resolution	Supported
Maintenance	Local or remote maintenance / Configuration management / Performance management / Fault management / Software upgrade / Trace/Logging
MTBF	≥ 150000 hours
MTTR	≤ 1 hour