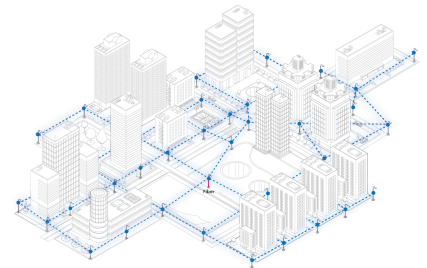
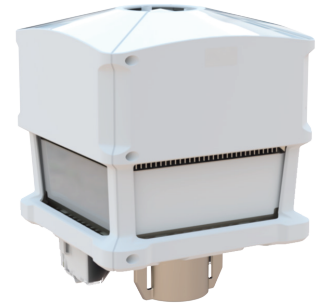




TERRAGRAPH DISTRIBUTION NODE

INTRODUCTION

MLTG-360 is a Terragraph™ certified distribution node (DN). MLTG-360 has 4 radios, supporting 360o coverage. Each radio of MLTG-360 equipped with a 256-element beamforming phased array antenna, supporting up to 1.8 Gbps bi-directional throughput. In addition, MLTG-360 supports advanced mesh solution to establish a robust wireless network. Resilient mesh can be easily constructed between multiple MLTG-360 to construct the wireless network with high availability. MLTG-360 provides fiber-like connectivity at a lower cost than fiber which is ideal for fixed wireless access, backhaul of Wi-Fi, or cellular networks.



● MLTG-360 Distribution Nodes

SPECIFICATIONS

PHYSICAL

Power:	Passive PoE (Injector Optional) 42.5V~59V DC terminal block
Dimensions (L x W x H):	19.9 x 19.9 x 20.0 cm (7.83 x 7.83 x 7.87 in)
Weight:	3.9 kg (with mount)
Interfaces:	1x Gigabit Ethernet Port (PoE IN) 1x 10 Gigabit SFP+ port 4x Gigabit Ethernet Port (PoE OUT)*1 4x 60GHz Radio
Environmental Conditions:	IP66 Rating Operating Temperature: -20°C (-4°F) to 55°C (131°F) Storage Temperature: -40°C (-40°F) to 85°C (185°F)
Antenna:	Type: Built-in phased array antenna Gain: 28 dBi
Certifications:	FCC / CE

RADIO

Standards:	802.11ay/ad
60GHz Radio:	4 x antenna tiles per radio 64 antenna elements for each antenna tile 90 degrees azimuth scan range: -45° to 45° 50 degrees elevation scan range: -25° to 25°
RF Output Power*2:	Up to 43 dBm*3
Frequency Band:	57-71GHz
Modulation:	OFDM, BPSK, QPSK, 16QAM



PERFORMANCE

Range:	Up to 300m for MCS9 Up to 200m for MCS12
RF Performance (RX):	-66 dBm @ MCS9 -61 dBm @ MCS12

Features:

- Support channel 1 to channel 4 (57-66GHz)
- Up to 1.8 Gbps throughput in both direction for each radio
- Beamforming technology with phased array antenna for easy alignment
- Support TDMA-MAC for dynamic bandwidth allocation
- Support Over-the-Air (OTA) Security with AES128 encryption
- Mesh network with IPv6 routing
- Support QoS with 4 service classes
- Self-recovery & optimization
- Support Layer 2 Forwarding
 - Support VLAN transparent transmission
 - Support management VLAN

ORDERING INFORMATION

PART NUMBER	DESCRIPTION	POWER CONSUMPTION
MLTG-360	Terragraph DN with 4 radios, 360o coverage	75W max.
MLTG-360-3	Terragraph DN with 3 radios, 270o coverage	60W max.
MLTG-360-2P	Terragraph DN with 2 radios (in parallel), 180o coverage	45W max.
MLTG-360-2R	Terragraph DN with 2 radios (at right angle), 180o coverage	45W max.
MLTG-360-1	Terragraph DN with 1 radio, 90o coverage	30W max.

ACCESSORY

PART NUMBER	DESCRIPTION
J-Bracket	MLTG-360 Bracket, Pole mount
PoE Injector	90W PoE Injector* 60W PoE Injector