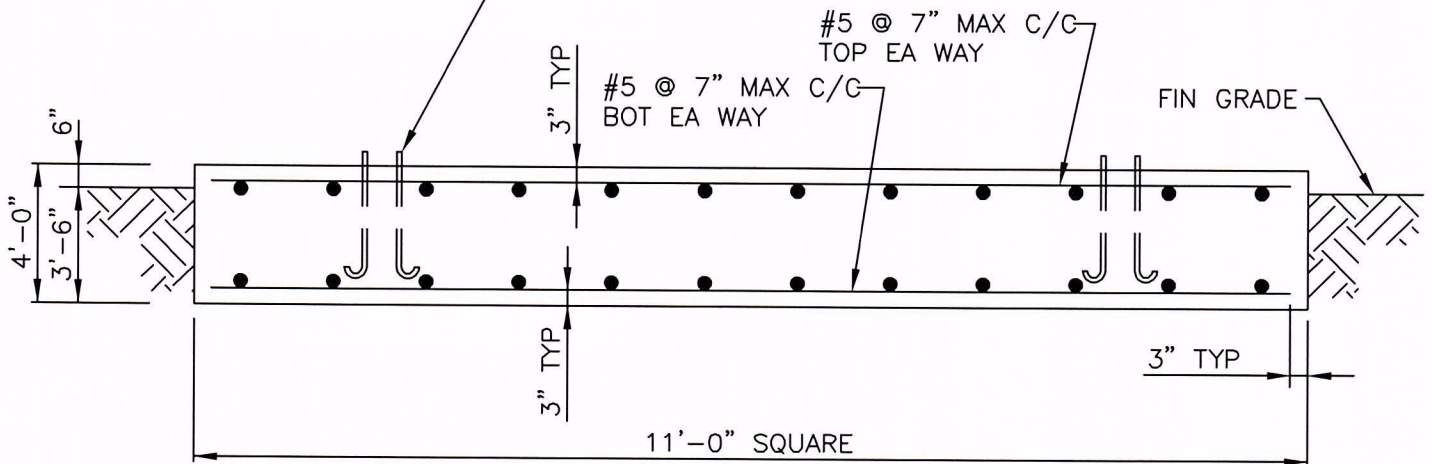


NOTES:

1. ALL CONCRETE SHALL HAVE A MINIMUM COMPRESSIVE STRENGTH OF 3000 PSI @ 28 DAYS.
2. REINFORCING STEEL SHALL CONFORM TO THE REQUIREMENTS OF ASTM A615 (GRADE 60).
3. TOTAL CONCRETE = 18 CUBIC YARDS.
4. FOUNDATION DESIGN BASED UPON ASSUMED SOIL PARAMETERS AS FOLLOWS:

ALLOW BEARING PRESSURE: 2000 PSF
 UNIT SOIL WEIGHT: 100 PCF
 WATER AND ROCK LOCATED BELOW FOOTING

ANCHOR BOLTS BY AMERICAN TOWER,
 1"Ø x 3'-6" MIN EMBEDMENT INTO
 CONCRETE. 180° END HOOK PER ACI.
 SEE DRAWINGS BY AMERICAN TOWER
 FOR ANCHOR BOLT ORIENTATION.



MAT FOUNDATION

FOOTING MUST BEAR ON
 UNDISTURBED SOIL OR
 COMPACTED BACKFILL.

AMERICAN TOWER COMPANY

ISO 9001-2000
 P.O. Box 29 Shelby, Ohio 44875
www.amertower.com
info@amertower.com

Telephone
 (419) 347-1185

Since 1953

Fax
 (419) 347-1654

100' STANDARD FOUNDATION

BY: DOW

DATE: 12/21/02

DWG NO. 1061 A