

Easy and Reliable Wireless Broadband Access

CPE-CBSD, Rugged, CAT12, 18 dBi Outdoor CPE

Part of Airspan's end-to-end CBRS solution, the AirSpot 5410 is an advanced, LTE, CAT12, outdoor, multi-service product specifically designed to meet data needs for residential, business and enterprise users. Supporting Gigabit networking functionality and multiple TDD band operations, it enables wide-coverage and high-data throughput. Multiple operator network support can allow deployment across the country with different operators. The AirSpot 5410 provides a Gigabit PoE connection to connect user terminal devices, such as a router or WiFi AP products. It is CAT-B CBSD FCC and SAS compliant.

Rugged and Reliable

Built for the outdoors, with an IP67 rating, it can safely operate in temperatures ranging from -40° to 65° C.

High Performance

Depending on the configuration and traffic split, the unit can provide up to 600 Mbps download speeds and increased cell edge with its internal, high-gain, 18 dBi antennas.

Easy to Use

Once connected to a CBSD, simply connect it to a computer, switch or router, and it's ready to go. Eight LED's easily communicate the status, and IP addresses are dynamically obtained via its internal DHCP.

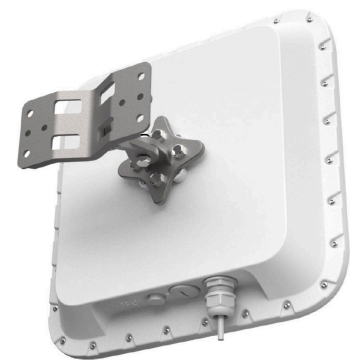
Easy to Manage

Supports local management access, Telnet, HTTP, HTTPS and standard TR069 remote OTA management, including device configuration, monitoring, and upgrades management. Firmware upgrades can be done from a pre-configured URL using HTTP/FTP.

Advanced Technology

Based on 3GPP standard implementation of LTE CAT12 specifications, it can easily meet requirements of large service providers. Supports up to 4CA DL and 2CA UL, MIMO capabilities, 64QAM modulation (uplink), and 256QAM modulation (downlink).

Need more information? Get in touch with the Airspan sales team by visiting airspan.com/contact.



Specifications

Physical

- **Dimensions:** 350 mm (w) x 350 mm (l) x 76.8 mm (h)
- **Weight:** 2.9 kg
- **Power Consumption:** < 12 W
- **Power Adapter:** Standard PoE injector 802.3af
- **AC Input:** 100~240V & 50/60Hz
- **Mounting:** Kit included for multi-angle installation on walls and poles, with rotation, tilt, or pan of the CPE

Environmental

- **Operating Temperature:** -40° C to 65° C
- **Storage Temperature:** -40° C to 85° C
- **Humidity:** Operating 10~90%; Storage 5~95%

LTE RF

- **Radio Access:** 3GPP E-UTRA; Release 12, CAT12
- **Frequency Band:** 42H, 43L, 48
- **MIMO:**
 - DL 2 x 2 (4CA)
 - DL 4 x 4 (2CA)
 - UL 2 x 2 (1CA)
 - UL 1 x 1 (2CA)
- **Carrier Aggregation:**
 - DL 2CA (4 x 4 MIMO, 64QAM)
 - DL 4CA (2 x 2 MIMO, 256QAM)
 - UL 2CA (64QAM)
- **Output Power:** 23±2 dBm
- **Antenna:** 4 Directional Antennas; 18±1 dBi
- **Receive Sensitivity:** -93 dBm (20 Mhz bandwidth)
- **Channel Bandwidth:**
 - 2CA with any combination of channel bandwidth
- **Maximum Throughput:** 580 Mbps (2 x 2 MIMO, 4CA, 256QAM)
- **Mounting:** Kit included for multi-angle installation on walls and poles, with rotation, tilt, or pan of the CPE; Allows the CPE to match the phase of the eNB antenna and may increase the receive signal

Software

- Firewall Configuration (IP, MAC, URL Filter)
- Software Upgrade from HTTP or HTTPS Web Server
- Built-In DHCP Server for LAN Devices
- Admin and User Mode Configuration
- PIN Management, SIM Card Authentication
- Statistics Support (link status (LAN), number of Tx/Rx packets, uptime)
- Multi-APN Support
- IPv4, IPv6 Dual Stack
- Multiple PDN Interface Support
- PCI (Cell) Lock Support
- Status Information (signal strength, network type, network connection status, SIM card status, operator name, system mode, etc.)

User Interfaces

- **Data Interface:** 1 x RJ45, Gigabit Ethernet, 802af PoE
- **LED Indicators:** PWR, SYS, NET, SIM, 4 x RF
- **USIM Support:** 1.8V/3.0V 2FF USIM

Data Networking Features

- **Bridge Mode:** Supports up to 4 LAN devices that can connect to LTE public network; Module management via TR-069 from specific APN; Up to 4 public IP's to LAN devices; 4 APN support (can set static router for each APN)
- **Router Mode:** Can set 2 IP addresses on the LAN for 2 different networks; WAN IP can be set dynamically or static; DNS support; 4 APN support (can set static router for each APN)
- **NAT Mode:** Firewall configuration; 4 APN support (can set static router for each APN); DMZ support; DHCP (auto DNS or manual DNS support)

Device Management

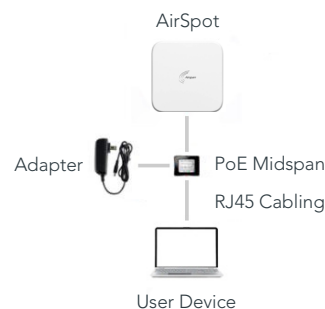
- HTTP/HTTPS Manual and Automatic Firmware Upgrade
- Standard TR-069 Management (firmware upgrade, debugging, monitoring, and configuration)
- Factory Reset
- Throughput Statistics

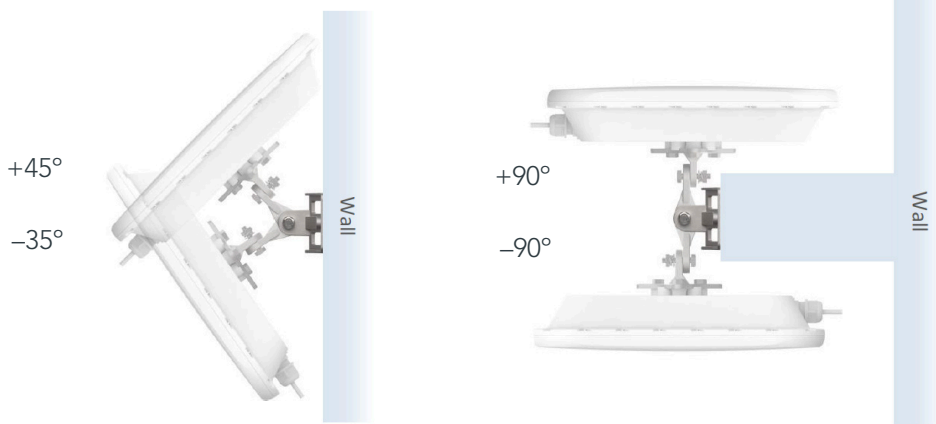
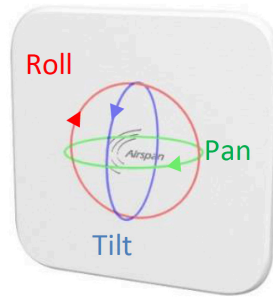
Industry Standards

- **ITU**
 - 3GPP: 3GPP E-UTLA Release 12
- **IEEE**
 - IEEE 802.3 10Base Ethernet
 - IEEE 802.3u Fast Ethernet
 - IEEE 802.3ab Gigabit Ethernet
- **Others**
 - Outdoor Rating IP67
 - Safety UL
 - FCC Part 96

Package Contents

- 4G Outdoor CPE
- PoE Midspan (802.af/100~240 V AC input)
- Quick Start Guide
- Mounting Kit





Airspan is a U.S.-based, multi-award winning 4G and 5G RAN vendor that supports cloud-native open architectures, and boasts close to one million cells deployed in the most cutting-edge tier one networks, and vertical applications across the globe. With an expansive product portfolio of indoor and outdoor, compact Femto, Pico, Micro, and Macro base stations, Airspan has the perfect network densification tool kit to exploit the full potential of technologies such as mmWave, sub-6 GHz, massive MIMO, and Open V-RAN architectures, as well as an industry-leading Fixed Wireless access and backhaul solution portfolio for PTP and PTMP applications.

