



Wireless Host Board WPJ543

Embedded Wireless Platform

Features

- Up to 300MHz Processing Speed
- Signal Strength LEDs Indicator
- Ground Terminal Connection
- MiniPCI Slot support DC 3.3V, DC 5V (Optional)
- Supports all Compex MiniPCI radio modules
- Support Compex, OpenWRT firmware
- Integrated Power-over-Ethernet
- Real-time power performance monitor DS2438 (Optional) ^①
- Remote hardware reset(Optional) ^②
- Hardware customization available
- Affordable, flexible for embedded systems integration

TECHNICAL SPECIFICATIONS

HARDWARE INFORMATION	
Processor	Atheros AR7130 (300 MHz) processor
General Usage	CPE
System Memory	32MB or 64MB DDR SDRAM
NOR Flash	4MB (up to 16MB)
MiniPCI Slot	1 x 9.2mm MiniPCI slot
Ethernet	1 x 10/100 Base T Ethernet Port (with Auto MDI / MDIX)
Serial Console	1 x 4 pin header(TTL)
JTAG Debug Interface	14 pin header
Reset	Push Button Reset
	Remote hardware reset(Optional)
Surge Arrestor	Supported
Watch Dog Timer	Yes
Beeper	x 1(Optional)
PoE	Passive PoE (range 12V-24V DC)
DC Jack Input	Range 12V/2A-24V/1A DC (Optional) ^③
LED Header	2 x 6 pin header (Optional)
Power Consumption	4W (host board only)
Certification	FCC, CE
RoHS Compliance	Yes
Humidity	Operating: 5% to 95% (non-condensing)
	Storage: Max.90% (non-condensing)
Temperature Range	Operating: -20°C to 70°C
	Storage: -40°C to 90°C
Dimensions(D x W x H)	95 X 105 x 18 (mm)
Weight	160 g

SOFTWARE INFORMATION	
Firmware Support	Compex , OpenWRT
Development Kits	JTAG Programmer ^④ , Serial Converter ^⑤ , POE Injector + Power Supply

■ Ordering Information^⑥

CODES	VERSION	CARTON DIMENSIONS
WPJ543LV 7C02PC432	Compex Firmware Version	For 50 pcs / carton, 0.72m*0.36m*0.22m/0.006=9.5KG
WPJ543LV 7C02PO432	OEM Firmware Version	
WPJ543LV 7C02PW432	OpenWRT Version	

① Depends on Order Configuration

② To be reset remotely from power supply location

③ Minimum input power 24W

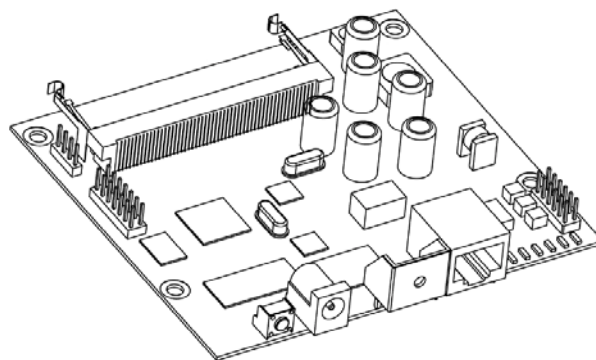
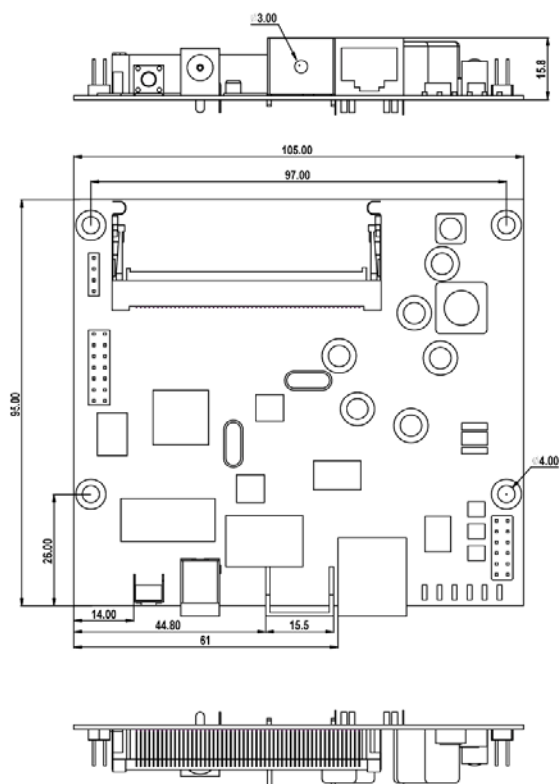
④ JTAG kit to write your own developed loader and firmware directly to flash memory

⑤ Serial Converter available to change the TTL signals on board to RS232 signals for debugging

⑥ Configurations are subject to change without notice

Please contact Compex sales representatives for other available configurations

DIMENSIONS DRAWING



Compex Systems Pte Ltd

135 Joo Seng Road, PM Industrial Building #08-01,
Singapore 368363
Tel: (65) 6286 2086
Fax: (65) 6280-9947
Email: sales@compex.com.sg

Compex (Suzhou) Co Ltd

NO.12, ChuangTou Industrial Square,
LouFeng North, Suzhou Industrial Park,
Suzhou, Jiangsu Province, China 215122
Tel: (86)-512-62950050
Fax: (86)-512-62950026



Copyright © 2011 Compex Systems. All rights reserved. COMPEX and the COMPEX logo, are registered trademarks of COMPEX Inc. While every effort is made to ensure the information is accurate, Compex does not accept liability for any errors or mistakes that may arise. All specification is subject to change without notice. Datasheet Version: V 1.2.4 Alex 131127

For more information, visit www.compex.com.sg