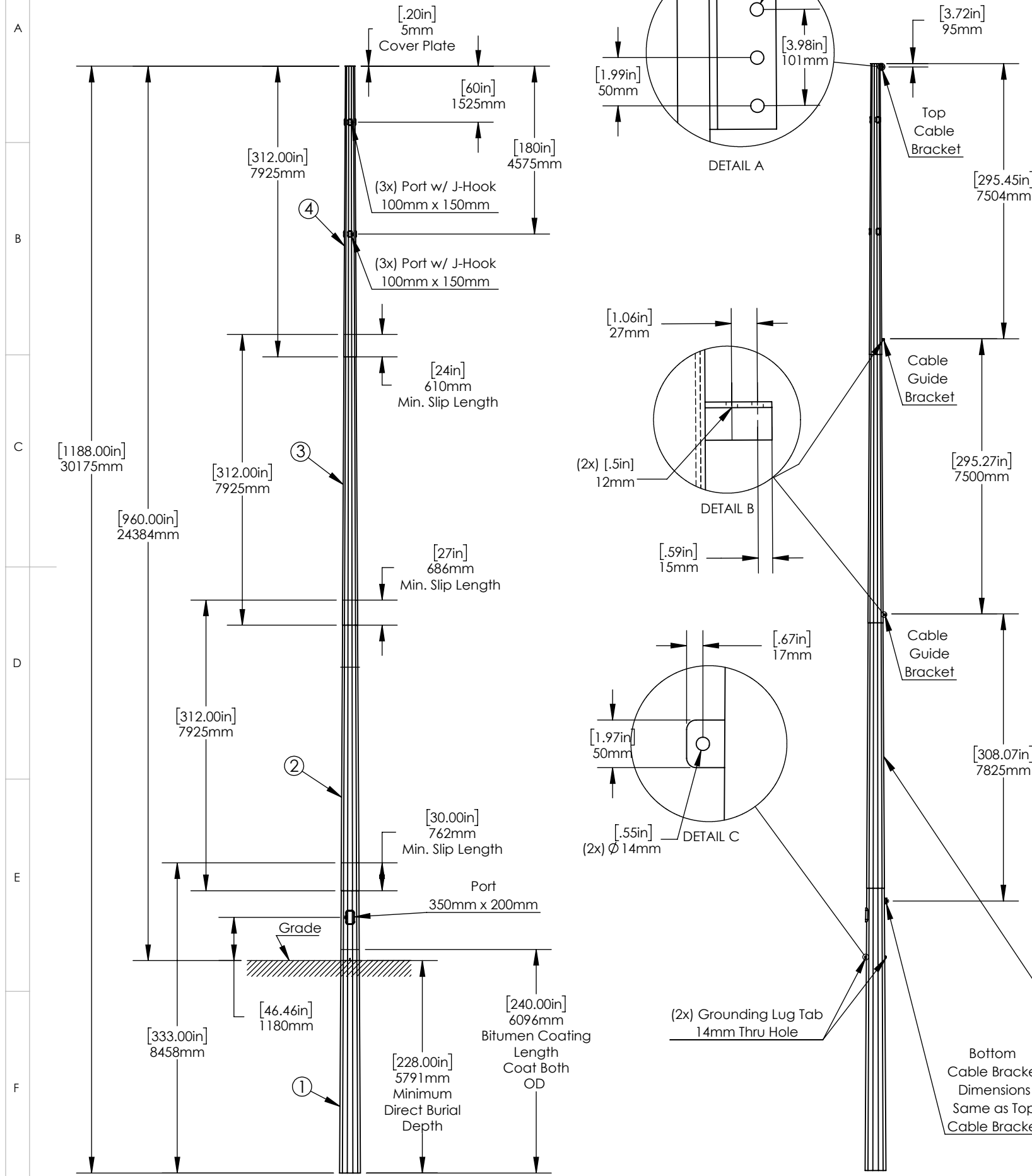


Proprietary rights are included in the information disclosed herein. This information is submitted in confidence and neither the document nor the information disclosed herein shall be reproduced or transferred to other documents for manufacturing or for any other purpose except as specifically authorized in writing by ARE Telecom & Wind.

| REVISIONS | | | |
|-----------|--|---------|----------|
| REV. | DESCRIPTION | DATE | APPROVED |
| A | initial release | 6/9/20 | MGC |
| B | Added pole section, reduced length below 30' | 6/12/20 | MGC |



- Survival Wind Speed: 90 MPH (40.2 m/s) (Basic)
 - Structure Class - II
 - Topographic - 1 (Crest Height - NA)
 - Exposure - C
- Design and Welding Codes:
 - TIA-222-G
 - AWS D1.1
 - JK K5664/ISO 3270-1984
- Material (or Equivalent)
 - Pole: ASTM A572 GR65
 - Equivalent (Q420B)
- Deflection: <2% at 60 MPH (26.8 m/s)
- Finish: Hot dip Galvanizing per ASTM A123
- Pole has 12 sides
- Pole Section Details

| Pole Section | #1 | #2 | #3 | |
|--------------------------|-------------|--------------|--------------|--------------|
| Thickness - (in)/ (mm) | 0.197/ 5 | 0.197/ 5 | 0.197/ 5 | 0.197/5 |
| Length - (in)/ (m) | 333/ 8.458 | 312/ 7.925 | 312/ 7.925 | 312/ 7.925 |
| Top Dia. - (in)/ (mm) | 18.5/ 470.2 | 15.7/ 397.7 | 12.8/ 324.3 | 9.8/ 250 |
| Bottom Dia. - (in)/ (mm) | 22.4/ 567.6 | 19.3/ 488.9 | 16.4/ 415.6 | 13.4/ 341.3 |
| Min Slip - (in)/ (mm) | | 30/ 762 | 27/ 686 | 24/ 610 |
| Weight (lbs)/ (kg) | 1231/ 559.7 | 970.6/ 441.2 | 808.5/ 367.5 | 663.5/ 301.6 |

Climbing Pegs
This Side
Placed Between
Top & Bottom
Cable Brackets
(Pegs - M16 x 200mm)

Bottom
Cable Bracket
Dimensions
Same as Top
Cable Bracket

| | | | |
|--|-----------------------------------|---|--|
| CAD-generated drawing do not manually update | | ARE Telecom & Wind 1043 Grand Avenue, # 213 St. Paul, MN 55105 (651) 330-1263 | |
| Total Weight 3674 lbs (1670 kg) Does not include fasteners | APPROVALS DRAWN MGC CHECKED | DATE 6/9/20 | 80ft 4 Section Direct Burial Pole |
| MATERIAL See Notes FINISH See Notes DO NOT SCALE DRAWING | RESP ENG MFG ENG QUAL ENG | | |
| Details and dimensions not shown on this drawing can be found in CAD file. | | | scale NA rev. B size NA sheet 1 of 1 |