



ARE Telecom + Broadband

AFS 150 Ballast Foundation and Self Raising 30' Monopole Washington State DNR - Palouse Falls State Park



OVERVIEW

State Parks identified a critical gap in radio coverage at Palouse Falls State Park due to the unique geology of the 500-foot deep canyon. The Department of Natural Resources used ARE Telecom's AFS 150 portable foundation and 30' self-raising pole to provide radio coverage for firefighting efforts, support the Department of Fish & Wildlife and the Washington State Parks Commission daily operations.

SOLUTION

The AFS 150 system allowed DNR to meet the State Park small print requirement while providing critical radio coverage to the park. The ballasted radio site occupies 200 ft.² and operates on solar power. The radio equipment is housed in a compact outdoor cabinet and a barbed-wire on the AFS protects the equipment from animals.

Project benchmarks:

- Improve radio coverage at Palouse Falls State Park and the adjacent Lyons Ferry State Park
- Self-contained system powered with solar panel
- Above ground foundation with small footprint on State Park land.

PROJECT RESOURCES

Pick-up truck, hand tools, compactor, skid-steer, cement blocks used for ballast.



CHALLENGES

- Remote area in Palouse Falls State Park
- Minimal site disruption and visual impact to meet State Park requirements
- Limited budget : Quick install thanks to a ballasted foundation and self-raising pole



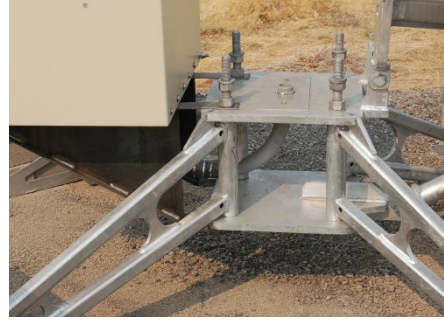
ARE Telecom + Broadband



Leveling the base



Assembled Foundation with electrical box



Foundation with ballast and pole. Solar panel and antenna assembly.



Foundation with ballast completed



Foundation & monopole