

Ballast Foundation - Up to 60' Self-Raising Pole

Crane, Indiana



Client: G3

Location: Crane Naval Base

Date: March 2020

Product:

ARE Telecom was contracted by G3 to design, manufacturer, and install three AFS 350 ballasted foundation systems with a customized tilt-up/self-raising monopole to support communication antennas on a military naval base in Crane IN. The antennas had to be easilu rotated in order to precisely adjust their orientation. The foundation had to be above ground with a limited foot print and easily movable.

Solution:

ARE designed a pole providing G3 with a simple solution to change the orientation of the antennas using rotating aluminum plates. The pole can be raised and lowered with a motorized screw jack. The top section can be rotated while resting horizontally on a pedestal. The foundations were pre-assembled in our warehouse to meet the time constraint of the customer and the three systems were installed in three days on the site.

Benchmarks:

- Crew flexibility and equipment availability allowing for installation under challenging time constraints
- Antennas installed on ground level eliminating the need to climb
- Install AFS 350 foundation and pole with small footprint without the use of a crane
- Easy solution to rotate the antennas

Project Resources:

- 2 person crew
- 3 day assembly of foundation & pole
- Skid Steer
- Gravel used for ballast

Challenges:

- Easy rotation of antennas
- Tilt-up pole raised and lowered with a motorized screw jack (no need for a crane)
- Quick to install
- Small footprint

ARE CONTACT INFORMATION:

Phone Number:
+1 (651) 330-1263

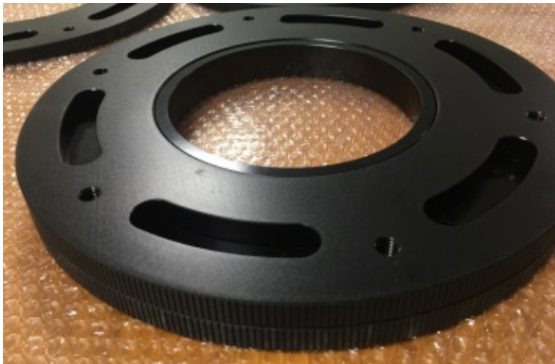
Email:
Sales@aretelecom.com

AFS 350



Ballast Foundation - Up to 60' Self-Raising Pole

Crane, Indiana



ARE CONTACT INFORMATION:

Phone Number:
+1 (651) 330-1263

Email:
Sales@aretelecom.com

Case Study