



Primus Cable's Premier MIG+ line is our first class line of data jacks. The MIG+ Cat 5E keystone jacks are engineered with Press-fit PCB technology, phosphor bronze IDC contacts, gold plated prongs, and a fire-retardant plastic housing.

#### Features

- Meticulously engineered to deliver exceptional performance while streamlining installations
- Press-fit PCB technology ensures a high quality connection and reliable performance
- Gas-tight electrical connections
- Small form-factor for high-density installations
- Gold plated over nickel contacts for signal clarity
- Phosphor Bronze IDC contacts ensure excellent conductivity, durability, and outstanding resistance against wear or corrosion
- Fire retardant plastic housing provides additional protection against the elements
- Innovative jack design keeps pairs together to streamline the installation process

#### Jack Construction

- Jack Housing: ABS High-Impact UL94V-0 Thermoplastic
- Spring Wire: Bronze Gold Plated Over Nickel
- IDC Housing: Polycarbonate High-Impact UL94V-0
- IDC Contacts: 0.4mm Phosphor Bronze, 200u" Tin Over 50u Nickel
- IDC Wire Range: Solid 24 AWG - 26 AWG
- Number of Prongs: 8
- Number of Conductors: 8

#### Dimensions

- Width: 14.60 mm
- Height: 19.50 mm

#### Optional Cat 5E Bulk Cables

- C5UP-3221WH - Cat 5E UTP Plenum Cable for Networking, CMP US Made UL Listed 1000' White

Primus Cable's plenum cables are ideal cables for plenum spaces in offices or commercial buildings. This 350MHz Cat 5E is Made in the USA, CMP plenum rated and UL Listed with 24 AWG solid bare copper and FEP Insulation. This Cat 5E Cable is supplied in a 1000ft pull box. To complete your installation call us about our tools.

- C5UP-5041BL - Cat 5E UTP Plenum Cable for Networking, CMP UL Listed 1000' Blue

Primus Cable's plenum cables are ideal cables for plenum spaces in offices or commercial buildings. This 350MHz Cat 5E is CMP plenum rated and UL Listed with 24 AWG solid bare copper and FEP Insulation. This Cat 5E Cable is supplied in a 1000ft pull box with a large payout which helps eliminate snags or kinks when installing the cable, saving you time and money. To complete your installation call us about our tools.

- C5U-4743RB - Cat 5E UTP Ethernet Cable, CMR UL Listed 1000' Blue

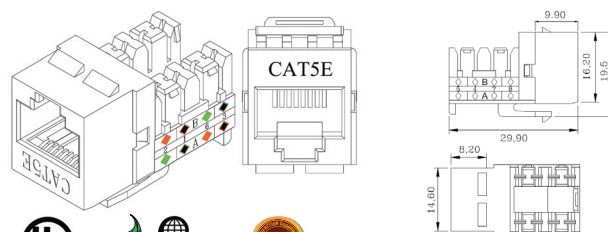
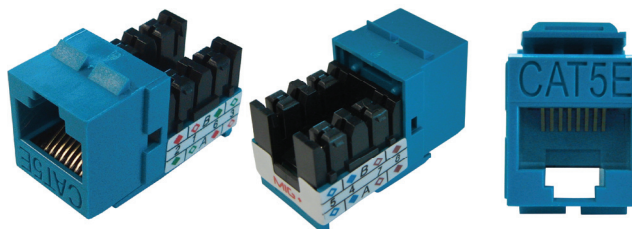
Primus Cable's CMR Cat 5E Ethernet Cables are ideal for any home or office. This 350MHz Cat 5E cable is CMR riser rated and UL listed with 24 AWG solid bare copper conductors. This Cat 5E Cable is supplied in a 1000ft pull box with large payout which helps eliminate snags or kinks when installing the cable, saving you time and money. To complete your installation call us about our tools.

- C5U-379WH - Cat 5E UTP Ethernet Cable, CM ETL Verified 1000' White

Primus Cable's economic CM Cat 5E Ethernet Cables are ideal for any home or office. This 350MHz Cat 5E cable is CM rated and ETL Verified with 24 AWG solid bare copper conductors. This Cat 5E Cable is supplied in a 1000ft pull box with large payout which helps eliminate snags or kinks when installing the cable, saving you time and money. To complete your installation call us about our tools.

## MIG+ Cat 5E Keystone Jacks RJ45, 110 Punchdown

## Cat 5E Keystone Jacks



#### Applications

- Voice and Data
- ISDN: Basic and Primary Access
- Token Ring: 4/16/100 Mbps
- ATM: 25/52/155 Mbps
- Ethernet
- Fast Ethernet
- 10Base-T
- 100Base-TX/T2/T4
- 1000Base-T
- Gigabit Ethernet

#### Available Jacket Colors

- |          |                      |
|----------|----------------------|
| ● Black  | Item# K52-153/L90/BK |
| ● Blue   | Item# K52-154/L90/BL |
| ● Gray   | Item# K52-156/L90/GY |
| ● Green  | Item# K52-155/L90/GR |
| ● White  | Item# K52-160/L90/WH |
| ● Almond | Item# K52-152/L90/AL |
| ● Ivory  | Item# K52-157/L90/IV |
| ● Yellow | Item# K52-161/L90/YL |
| ● Orange | Item# K52-158/L90/OR |
| ● Red    | Item# K52-159/L90/RD |
| ● Purple | Item# K52-162/L90/PR |



PrimusCable.com - (951) 824-1571



## MIG+ Cat 5E Keystone Jacks RJ45, 110 Punchdown

### Electrical Characteristics

- Insulation Resistance: 500MΩ
- Dielectric Withstanding Voltage: 1000v
- DC Current Rating: 1.5 amps
- DC Resistance: 0.1Ω
- Contact Resistance: 20Ω
- Minimum Temperature: -10°C
- Maximum Temperature: 60°C

### Standard Verification

- TIA/EIA-568-B.2-1
- UL 1863
- UL Certified Cat 5E
- ACA Compliant (N13181)
- RoHS Compliant

### Optional Cat 5E Patch Cables

#### Cat 5E Patch Cords, Molded with Bubble

- 1 Ft: PC5P-511-1BL
- 2 Ft: PC5P-520-2BL
- 3 Ft: PC5P-539-3BL
- 5 Ft: PC5P-548-5BL
- 7 Ft: PC5P-557-7BL
- 10 Ft: PC5P-566-10BL
- 15 Ft: PC5P-2131-15BL
- 25 Ft: PC5P-593-25BL
- 50 Ft: PC5P-602-50BL
- 75 Ft: PC5P-611-75BL
- 100 Ft: PC5P-620-100BL
- 150 Ft: PC5P-2760-150BL



Available in  
Multiple Colors

#### Cat 5E Patch Cords Molded No Bubble

- 1 Ft: PC5N-629-1BL
- 2 Ft: PC5N-638-2BL
- 3 Ft: PC5N-647-3BL
- 5 Ft: PC5N-656-5BL
- 7 Ft: PC5N-665-7BL
- 10 Ft: PC5N-674-10BL
- 15 Ft: PC5N-2909-15BL
- 25 Ft: PC5N-701-25BL
- 50 Ft: PC5N-710-50BL
- 100 Ft: PC5N-728-100BL



Available in  
Multiple Colors

### Optional Blank Patch Panels

#### High Density Blank Patch Panels

These premium high-density blank patch panels allow for media integration by mixing and matching jacks. These patch panels support many fiber optic, telco, and data keystone jacks and because this is a high density patch panel, it allows you to install more jacks in tighter spaces do to it's smaller and closely spaced ports. The flush mounting ports facilitate clean cable management, eliminating snagging. Also the pre-numbered ports help to keep track and identify the runs to stay organized.



- 12 Port: PP3-474/12V
- 16 Port: PP3-3265/16
- 24 Port: PP3-3258/24
- 48 Port: PP3-3259/48

### Optional Cable Management

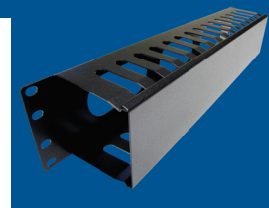
#### D-Ring Cable Management Panels

- 1U 5-Ring: PP4-314/5R/1U
- 2U 5-Ring: PP4-2102/5R/2U
- 1U 5-Ring: RP-K12-3613-1U
- 2U 5-Ring: RP-K12-3614-2U
- 1U 5-Ring + 14 Clips:  
RP-K12-3357-DMK



#### Slotted Cable Management Panels

- 1U: PP4-2444-1UDCM
- 2U: PP4-2445-2UDCM
- 1U: PP4-4522-1UDCM
- 2U: PP4-3483-2UDCM
- 1U: PP4-3407-1UDCM
- 2U: PP4-3408-2UDCM
- 2U: PP4-4461-2UDCM



©2013 CRN Solutions Inc. dba. Primus Cable  
All Rights Reserved.

Although Primus Cable makes every reasonable effort to ensure their accuracy at the time of this publication, information and specifications described herein are subject to error or omission and to change without notice, and the listing of such information and specifications does not ensure product availability.

Primus Cable provides the information and specifications herein on an "AS IS" basis, with no representations or warranties, whether express, statutory or implied. In no event will Primus Cable be liable for any damages (including consequential, indirect, incidental, special, punitive, or exemplary damages) whatsoever, even if Primus Cable has been advised of the possibility of such damages, whether in an action under contract, negligence or any other theory, arising out of or in connection with the use, or inability to use, the information or specifications described herein.

All sales of Primus Cable products are subject to Primus Cable's standard terms and conditions of sale.

Primus Cable believes this product to be in compliance with EU RoHS (Directive 2002/EC, 27 Jan. 2003). Material manufactured prior to the compliance date may be in stock at Primus Cable facilities and in our Distributor's inventory. The information provided in this Product Disclosure, and the identification of materials listed as reportable or restricted within the Product Disclosure, is correct to the best of Primus Cable's knowledge, information, and belief at the date any other operation of the product itself or the one that it becomes a part of. This Product Disclosure is not to be considered a warranty or quality specification and regulations based on their individual usage of the product.

Primus Cable declares this product to be in compliance with EU LVD (Low Voltage Directive 73/23/EEC), as amended by directive 93/68/EEC

**PrimusCable.com - (951) 824-1571**